

Produced on:

10 January 2024



Performance Report

Quarter 2

2023/24 financial year

Environment and Green Investment Committee

Governance & Performance
Cambridgeshire County Council

Key



Data Item	Explanation
Target / Pro Rata Target	The target that has been set for the indicator, relevant for the reporting period
Current Month / Current Period	The latest performance figure relevant to the reporting period
Previous Month / previous period	The previously reported performance figure
Direction for Improvement	Indicates whether 'good' performance is a higher or a lower figure
Change in Performance	Indicates whether performance is 'improving' or 'declining' by comparing the latest performance figure with that of the previous reporting period
Statistical Neighbours Mean	Provided as a point of comparison, based on the most recently available data from identified statistical neighbours.
England Mean	Provided as a point of comparison, based on the most recent nationally available data
RAG Rating	<ul style="list-style-type: none"> • Red – current performance is off target by more than 10% • Amber – current performance is off target by 10% or less • Green – current performance is on target by up to 5% over target • Blue – current performance exceeds target by more than 5% • Baseline – indicates performance is currently being tracked in order to inform the target setting process • Contextual – these measures track key activity being undertaken, to present a rounded view of information relevant to the service area, without a performance target. • In Development - measure has been agreed, but data collection and target setting are in development
Indicator Description	Provides an overview of how a measure is calculated. Where possible, this is based on a nationally agreed definition to assist benchmarking with statistically comparable authorities
Commentary	Provides a narrative to explain the changes in performance within the reporting period
Actions	Actions undertaken to address under-performance. Populated for 'red' indicators only
Useful Links	Provides links to relevant documentation, such as nationally available data and definitions

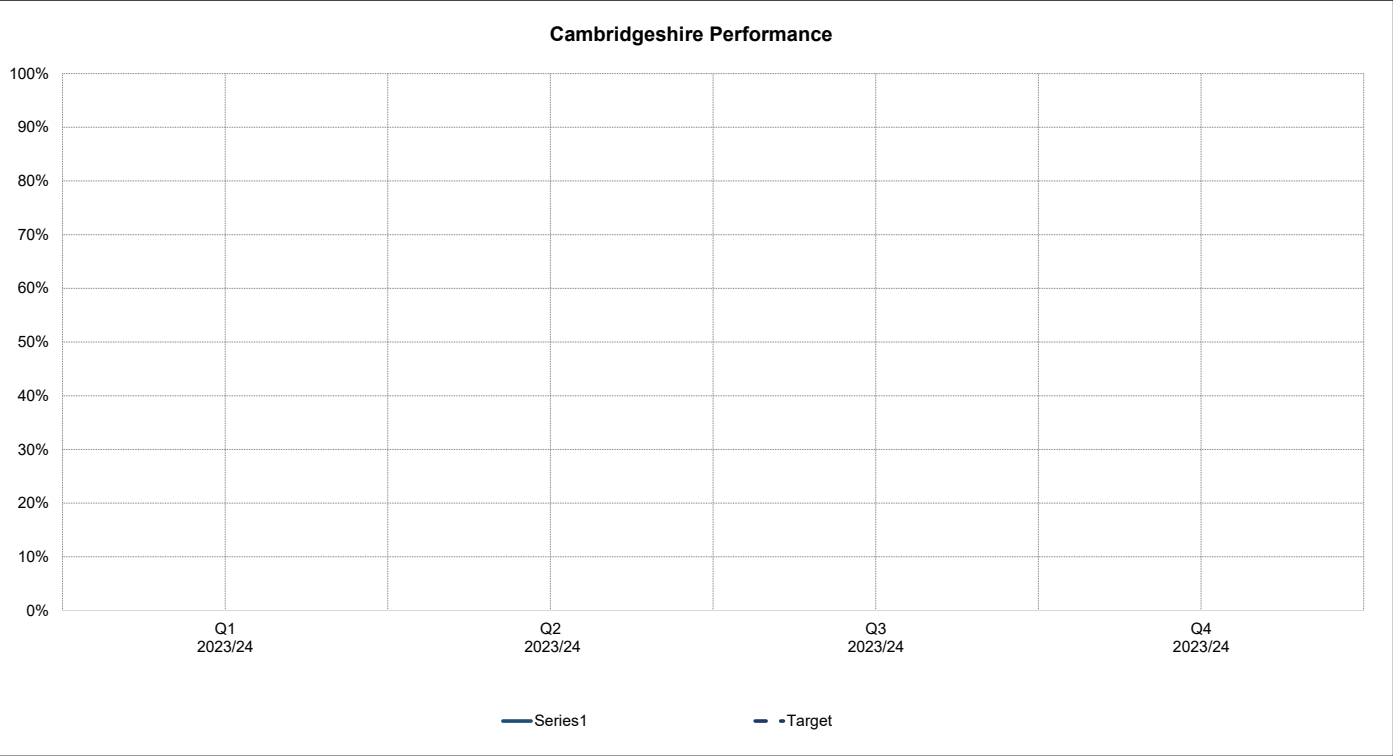
Target	Direction for Improvement	Current Quarter	Previous Quarter	Change in Performance
#N/A	↑	-	-	Unchanged
RAG Rating				
In Development				

Indicator Description

Brief, simple description of what the KPI is trying to inform the public about.
What is the rationale for this KPI?
How is the data collected and calculated?
If there is a target, how did it get decided on? If there is not a target, we need to explain why.
If there is benchmarking data, brief explanation of what they're looking at.
All abbreviations must be fully expanded within their first use.

Useful Links

Any public facing data, policy or benchmarking that can give members of the public additional context outside of the KPI sheet.



Commentary

Review of what the service did over the last period. Explaining to the public what the data is showing them.
If percentages in the chart, please give the raw data.
If results are declining, give detailed context as to why this has happened. If results are improving, give any examples of best practices as to why this has occurred/anything positive they would like to highlight.

Actions

Actions planned by the service to either maintain good performance or improve poor performance, preferably in a list format.

-
-
-

Target	Direction for Improvement	Current Quarter	Previous Quarter	Change in Performance
99.00%	↑	98.65%	98.54%	Improving
Statistical Neighbour Mean	England Mean	RAG Rating		
N/A	98.2%	Amber		

Indicator Description

This indicator shows the percentage of addresses with Superfast broadband (greater than 24mbps) availability across Cambridgeshire and Peterborough. The data has been produced by Think Broadband. This is a nationally recognised source of digital infrastructure statistics.

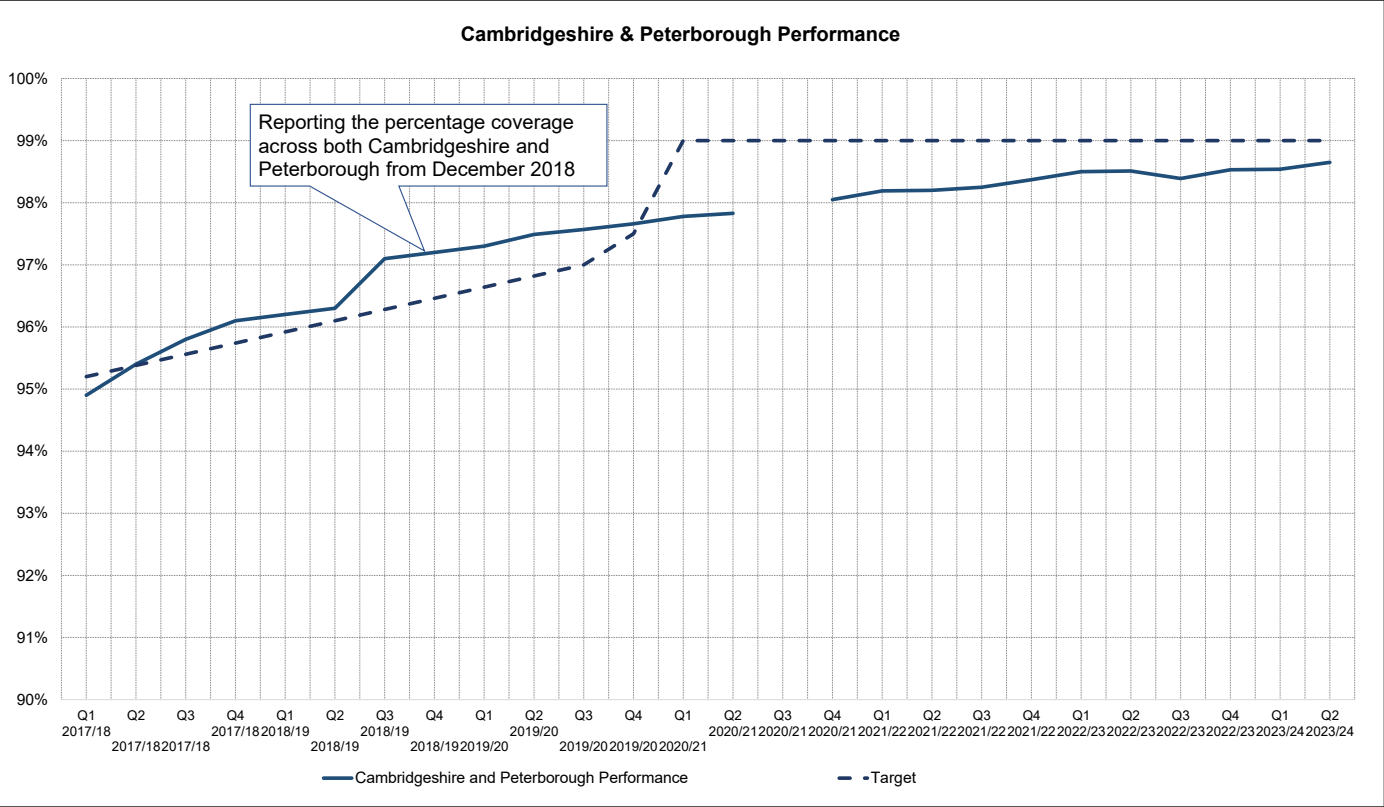
There was an interim target of 97% by end of 2019 and then 99% by 2020.

Source name: Think Broadband Collection name: Local Broadband Information

Polarity: High is good.

There is no statistical neighbour data.

Useful Links



Commentary

The percentage of premises in Cambridgeshire with access to at least superfast broadband is continuing to rise gradually and is still ahead of the England mean . **This remains lower than the target of 99% by end of 2020, however above the England Mean average of 98.2%.** Note, the Covid 19 pandemic affected the pace of digital infrastructure delivery and the lasting effect, together with the increasing cost and complexity of delivering to the final percentage of premises means that it will take longer than originally planned to reach or 99% target.

Please note the following changes to the indicator:

1. The targets and quarterly figures are now for both Cambridgeshire and Peterborough.
2. Quarterly targets have been calculated based on the overall target to reach over 99% coverage countywide by the end of 2020.

Actions

Target	Direction for Improvement	Current Quarter	Previous Quarter	Change in Performance
Above 85% by end of 2025	↑	82.34%	79.40%	Improving
Statistical Neighbour Mean	England Mean	RAG Rating		
N/A	78.9%	Contextual		

Indicator Description

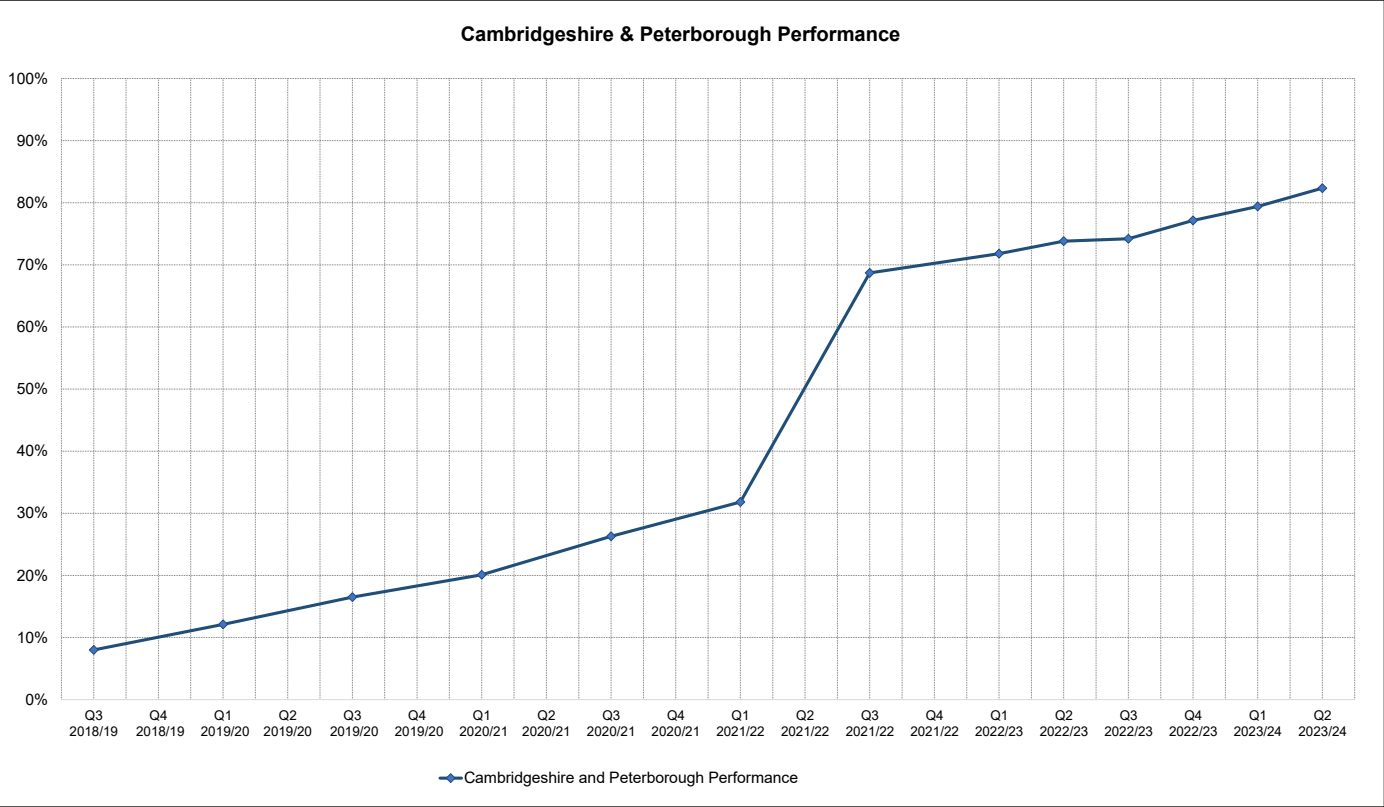
This indicator shows the percentage of addresses with access to Gigabit capable broadband across Cambridgeshire and Peterborough.

The data has been produced by Think Broadband. This is a nationally recognised source of digital infrastructure statistics.

Source name: Think Broadband Collection name: Local Broadband Information

Polarity: High is good.

There is no statistical neighbour data.



Commentary

Gigabit capable broadband coverage continues to rise and is on target for Cambridgeshire and Peterborough to exceed the government's national target of 85% GB coverage by 2025. This indicator denotes coverage (ie the ability of premises to be able to order a Gigabit broadband service) rather than take-up which reflects the percentage of premises actually ordering a gigabit service. Take-up data is a commercially sensitive and therefore not a figure shared by broadband suppliers.

Useful Links

Actions

Target	Direction for Improvement	Current Quarter	Previous Quarter	Change in Performance
100.0%	↑	100.0%	100.0%	Unchanged
RAG Rating				
Green				

Indicator Description

This indicator is an important measure of success when the local authority determines planning applications.

This is shown by the average percentage of decisions on applications made within two years. This is up to and including the most recent financial quarter.

Applications must be made:

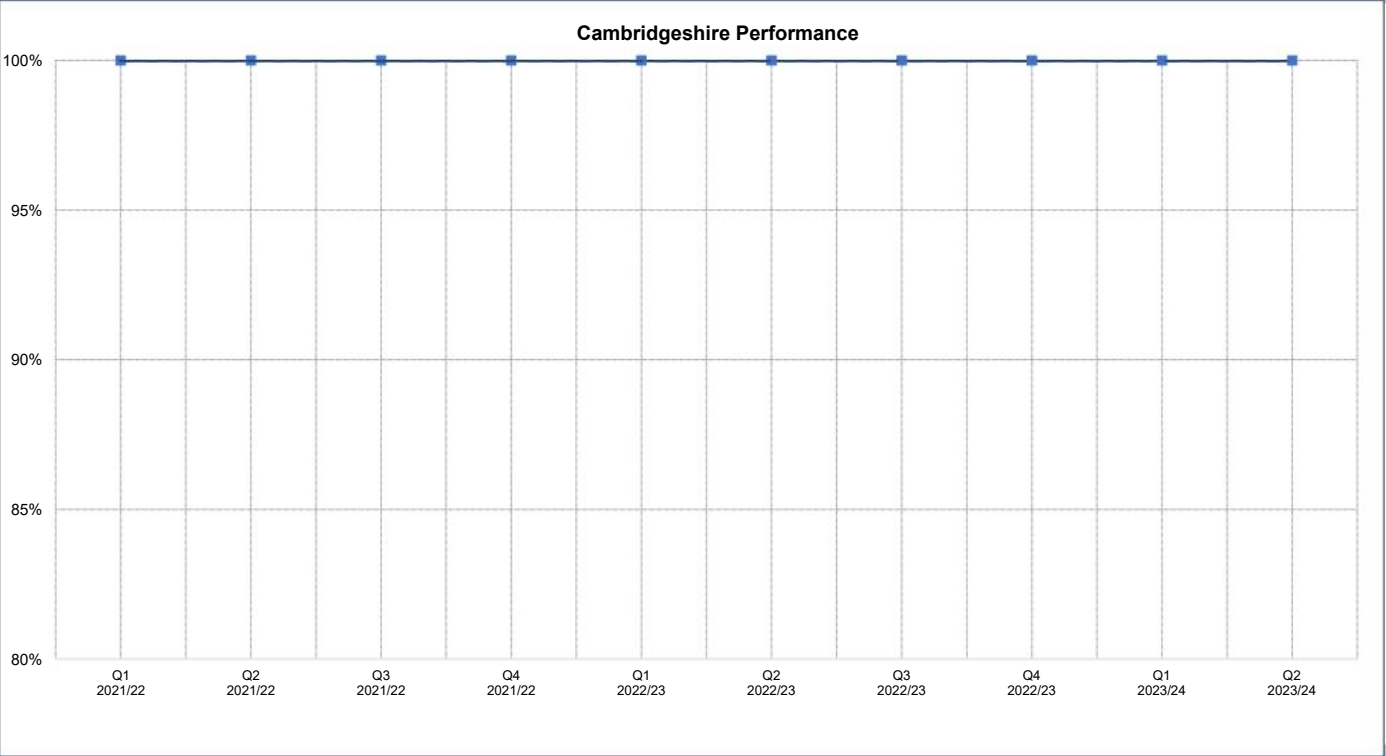
- a. within the statutory period. Or:
- b. within an extended period that has been agreed in writing between the applicant and the local planning authority.

We collect the data monthly and report quarterly.

The Department for Levelling Up, Housing and Communities collect data recorded for major development.

Useful Links

[Government publication service document on improving planning performance](#)



Commentary

If a Local Planning Authority often fails to make a decision on planning applications within the statutory period, without agreeing an extension of time, then the Secretary of State can label the Local Planning Authority as underperforming. If this happens, applicants have the option of submitting their applications to the Planning Inspectorate to make a decision.

If the Local Planning Authority is labelled as underperforming, then they will be expected to prepare an action plan to address areas of weakness that are leading to under performance. Therefore, the percentage of applications that are determined within the agreed timescales is a key performance indicator for the County Planning, Minerals and Waste team. Performance remained at 100% through the whole 2022/23 financial year. It is recommended that this indicator remains in corporate performance reports for as it is a key indicator of monitoring statutory performance of a key service.

Q2 of 2023/24 continues to see performance remaining at 100%.

Actions

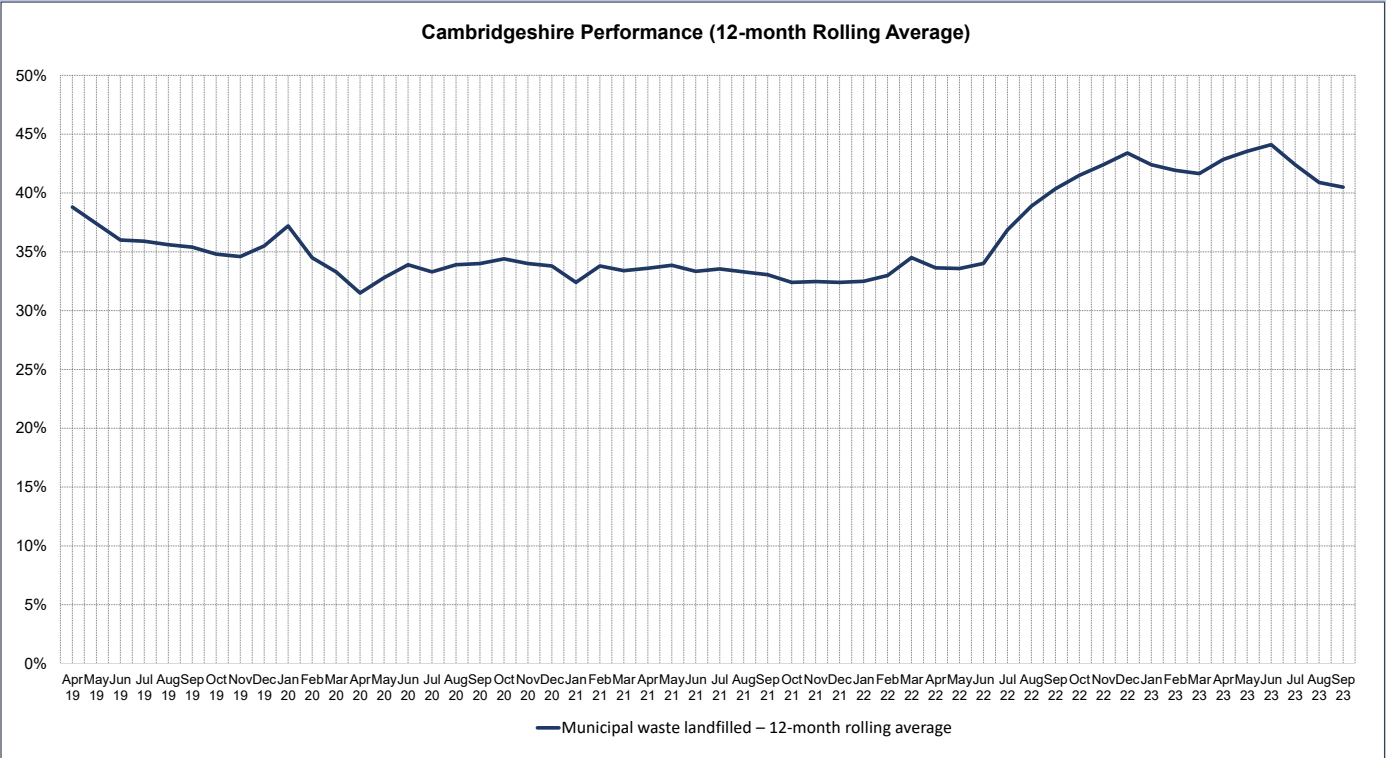
Target	Direction for Improvement	Current Month	Previous Month	Change in Performance
Contextual	↓	40.5%	40.9%	Improving
RAG Rating				
Contextual				

Indicator Description

This indicator shows the proportion of waste sent to landfill, either directly or as an output from the Mechanical Biological Treatment facility (MBT). This is based on a 12 month rolling average.

Polarity: Low is good

Useful Links



— Municipal waste landfilled – 12-month rolling average

Commentary

During the 12 months ending September 2023, 40.47% of waste was landfilled. The recent sharp increase relates to residual waste no longer being processed by the MBT from July 2022 onwards (and instead being sent directly to landfill), whilst the facility is being redeveloped.

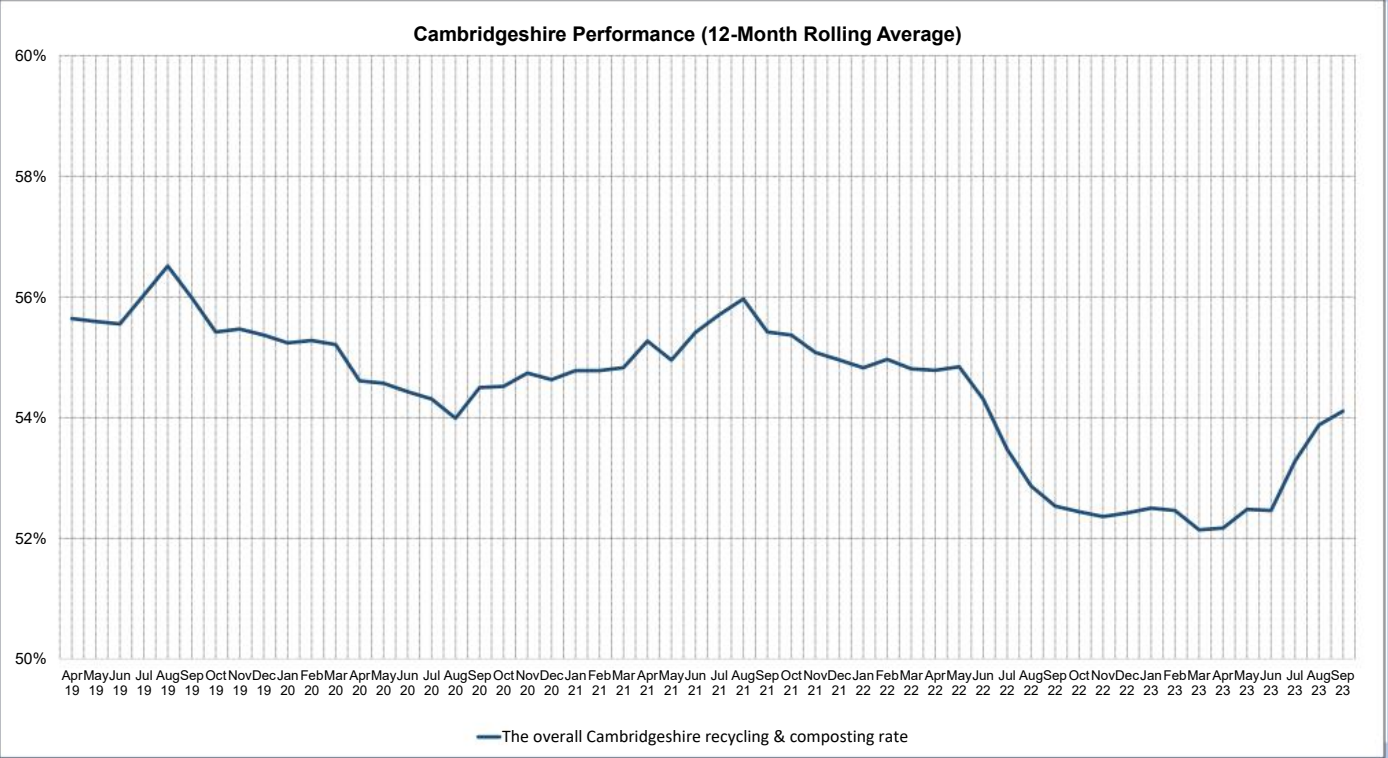
Actions

Target	Direction for Improvement	Current Month	Previous Month	Change in Performance
Contextual	↑	54.11%	53.88%	Improving
RAG rating				
Contextual				

Indicator Description

This indicator shows the combined proportion of household waste that is recycled, reused, composted or sent for energy recovery. This includes all district and city partner's recycling performance as well as the performance of the County Council's Household Recycling Centres. This has significant financial impact on the council.

Polarity: High is good



Commentary

During the 12 months ending in September 2023, 54.11% of waste was recycled, reused, composted or sent for energy recovery. Performance has improved significantly over the past six months, due to recovery in composting from the drought in 2022. However, recyclates are still no longer being recovered at the front end of the MBT (which is unavailable during BATc upgrade works), resulting in a drop from historic performance.

Useful Links

[Department for Environment, Food & Rural Affairs Waste Statistics](#)

Actions

Target	Direction for Improvement	Current Month	Previous Month	Change in Performance
Contextual	↑	54.11%	53.88%	Improving

RAG rating

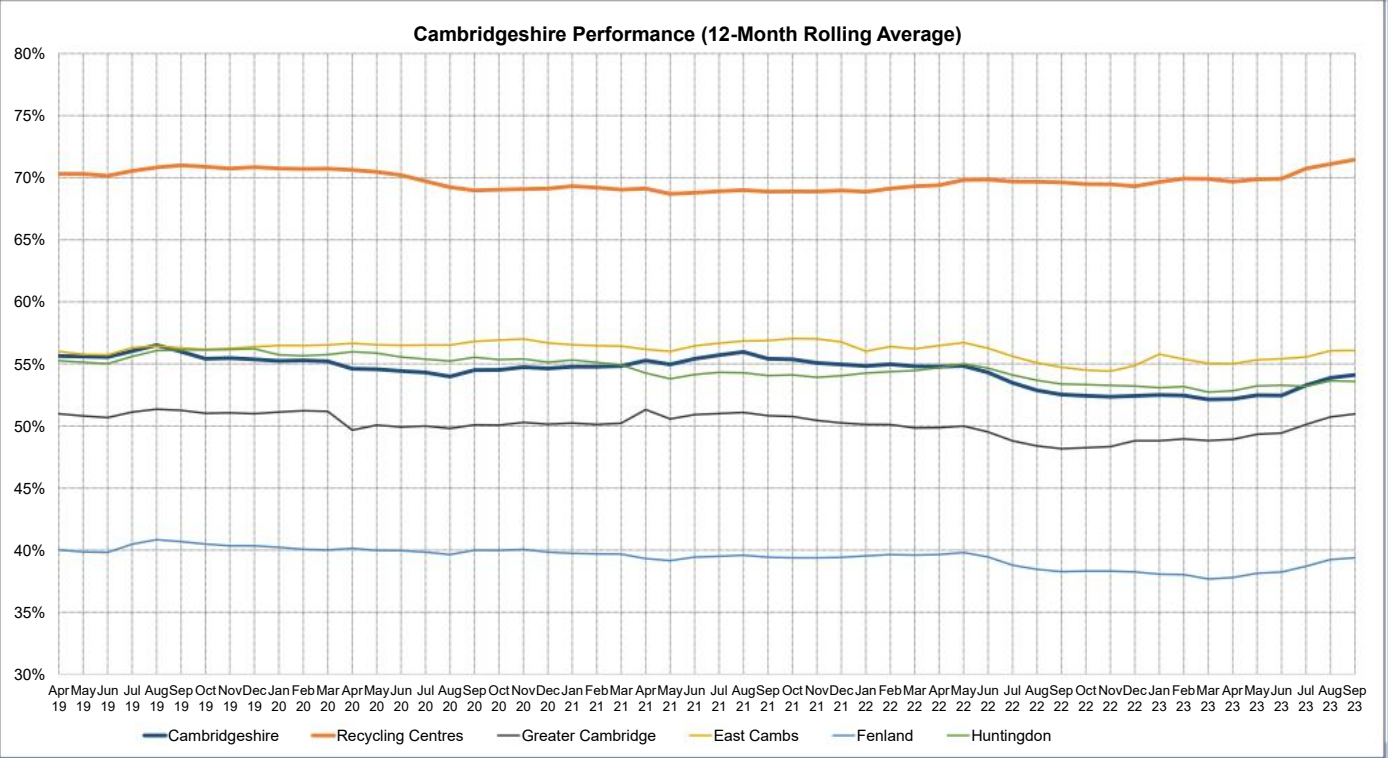
Contextual

Indicator Description

This indicator shows the combined proportion of household waste that is recycled, reused, composted or sent for energy recovery. This includes all district and city partner's recycling performance as well as the performance of the County Council's Household Recycling Centres. This has significant financial impact on the council.

The 'Cambridgeshire' line on this graph is the 12-month rolling average for Cambridgeshire, also shown in Indicator 150a.

Polarity: High is good



Commentary

Fenland's recycling rate is notably lower than the other districts, as they offer a paid garden waste collection, as opposed to the free garden and food waste collection offered by other districts. This results in them collecting proportionally less garden waste for composting.

Useful Links

[Department for Environment, Food & Rural Affairs Waste Statistics](#)

Actions

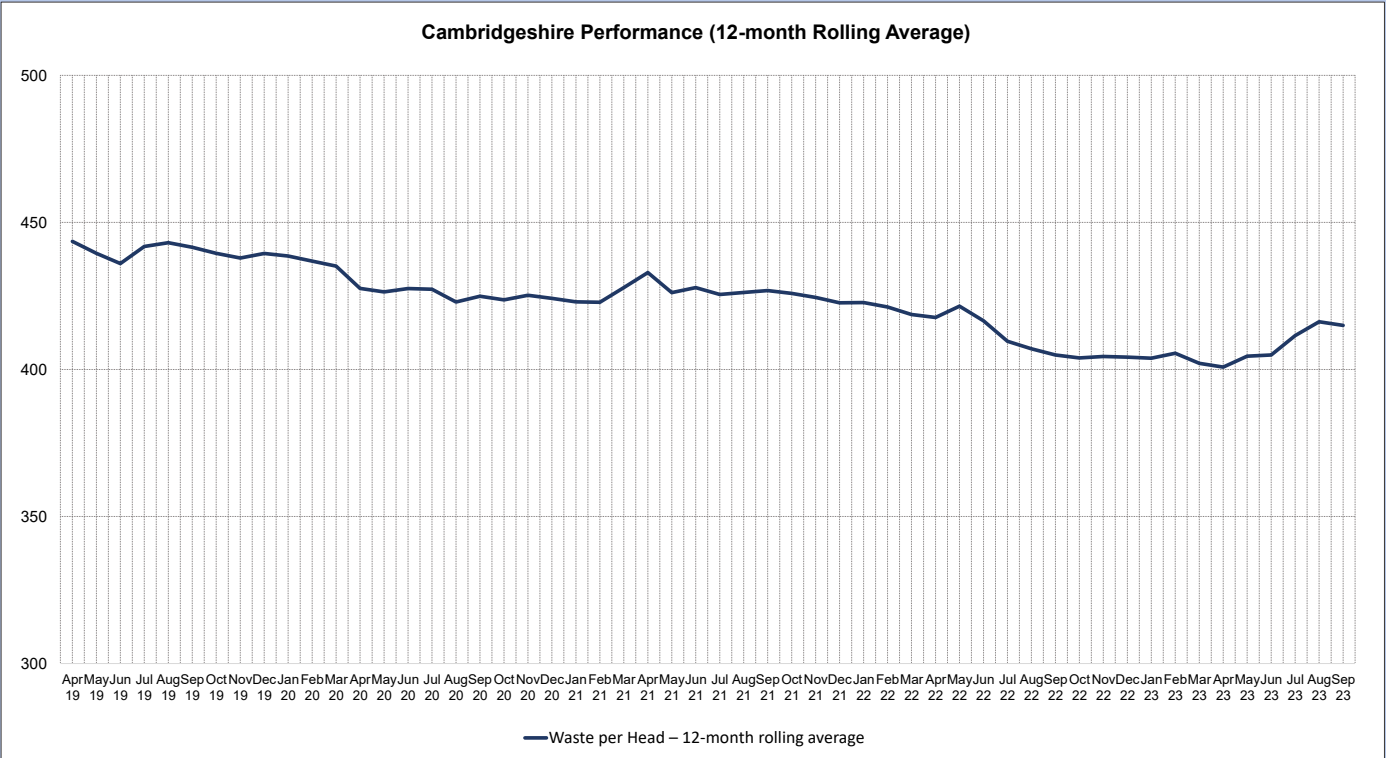
Target	Direction for Improvement	Current Month	Previous Month	Change in Performance
Contextual	↓	415.0	416.2	Improving
RAG Rating				
Contextual				

Indicator Description

This indicator shows the amount of household waste generated per person within Cambridgeshire. This is based on a 12 month rolling average. This has significant financial impact on the council.

Polarity: Low is good

Useful Links



Commentary

During the 12 months ending September 2023, 415kg/head of household waste across Cambridgeshire was collected. The recent increase in this figure is largely due to increased green waste tonnages, in comparison to the drought in Summer 2022, but the general downwards trend is expected to continue.

Actions

Indicator 224: Energy usage at CCC sites (kWh per month)

Target	Direction for Improvement	Most recent 12 months	Rolling 12 months, previous month	Change in Performance
Contextual	↓	1,957,624	1,966,103	Improving

RAG Rating

Contextual

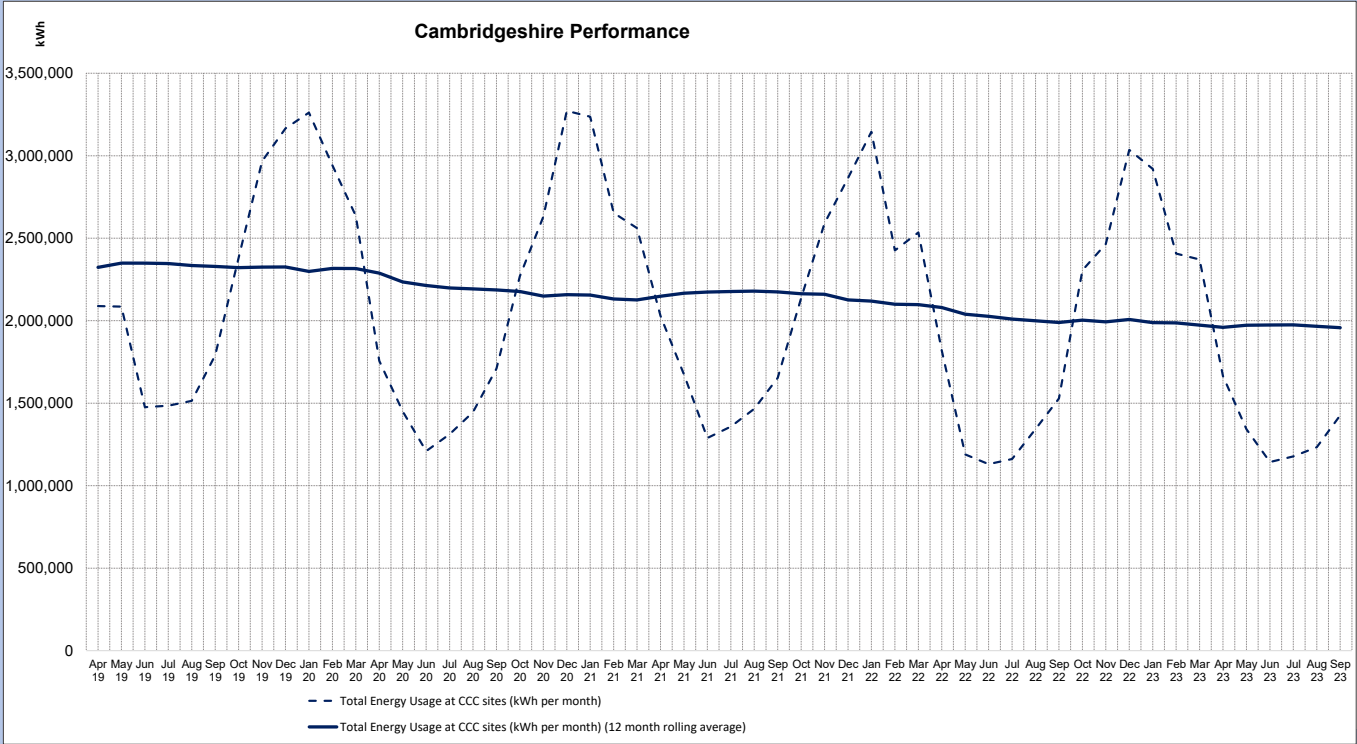
Indicator Description

Energy is the biggest source of the Council's direct (scope 1 &2) emissions. No target has been set for this indicator.

Energy use includes electricity, gas and oil.

Polarity: Low is good

Useful Links



Commentary

Energy usage is expected to be higher in winter, when there is more demand for heating and lighting.

Over half of the Council's electricity usage in the last 12 months was for streetlighting. Some of the total energy use is due to the Swaffham Prior Community Heat Network energy centre coming online and ramping up in 2022-23.

Annual energy use (total across electricity, gas and oil) in the FY 2022-23 was down 5.7% from the previous year. Gas usage in the FY 2022-23 showing a reduction of 21.5% from previous year, as a result of the low carbon heating programme.

Actions

Indicator 225: Council's carbon footprint, Scopes 1 and 2 (tonnes CO2e per year)

[Return to Index](#)

January 2024

Target	Direction for Improvement	Current Year	Previous Year	Change in Performance
Net zero by 2030	↓	1,407	2,137	Improving

RAG Rating

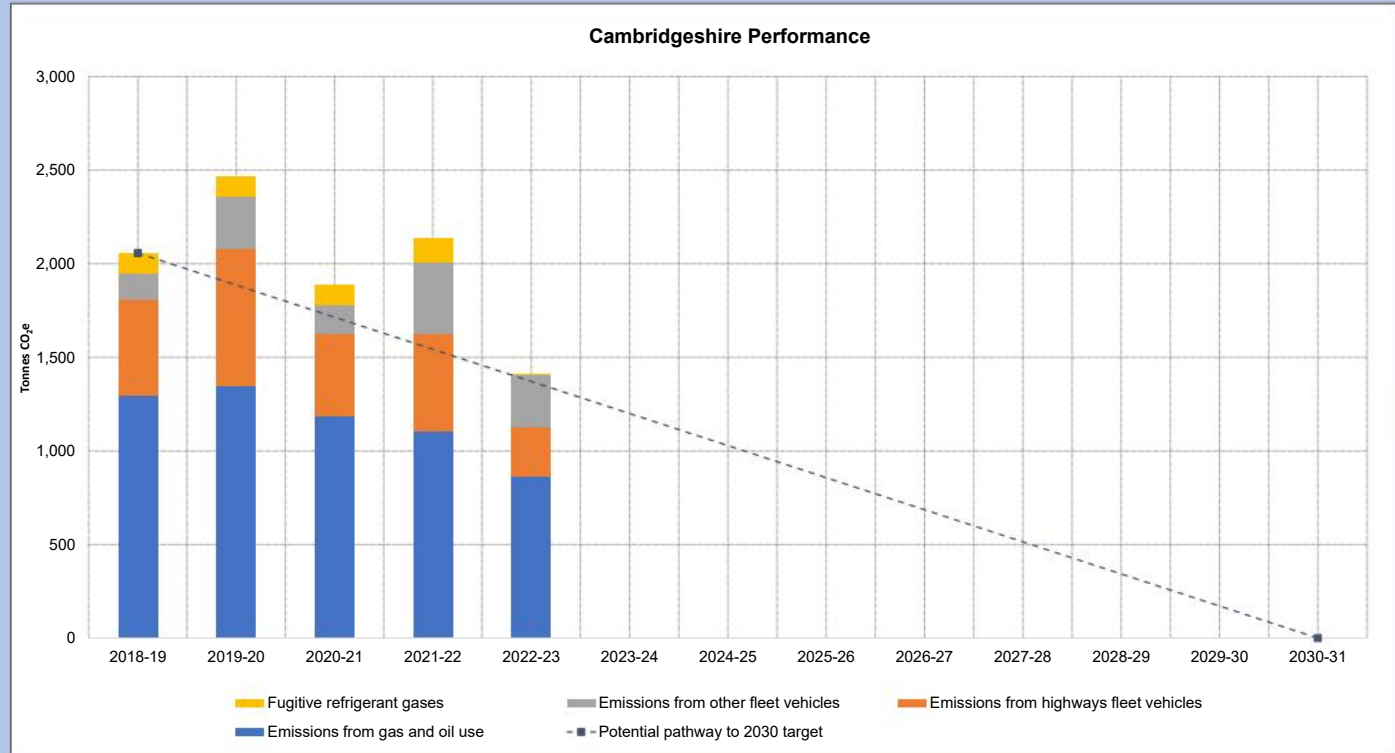
Contextual

Indicator Description

This indicator shows annual progress towards the Council's target set out in the Climate Change and Environment Strategy, of reducing scope 1&2 emissions to net zero by 2030.

Scope 1 means direct emissions from the Council's own assets.
Scope 2 means emissions from purchased electricity.

Polarity: Low is good



Commentary

Carbon footprint is measured retroactively in FY increments. FY 2018-2019 is our baseline year which we use to compare all subsequent FYs since. 2018-19 has been selected as that is the first year that we started Carbon footprinting. It is important to note that we recognise that our Carbon footprint won't necessarily go down year on year (as can be seen post pandemic years). Probably the most useful indicators of how we are moving towards our net zero goal is comparison to our baseline year which should be a net 100% reduction in scope 1 & 2 emissions by 2030.

Gas and oil emissions have reduced in 2022-23, and will reduce further in 2023-24 due to the low carbon heating programme.
Emissions from highways fleet have also reduced in 2022-23 due to the change from diesel to HVO biofuel for some large vehicles.

Scope 2 emissions from electricity are zero because the council purchases a green tariff through its supply contract.

Final data for 22-23 is being analysed and will be presented in the annual carbon footprint report for 22-23 in January 2024 as well as the next Performance Report following the release of the data. At the time of writing, the figures for 2022-23 are provisional data.

Useful Links

<https://www.cambridgeshire.gov.uk/residents/climate-change-energy-and-environment/carbon-footprinting-how-big-is-the-problem>

Actions

Indicator 226: Council's carbon footprint, Scope 3 (tonnes CO2e per year)

[Return to Index](#)

January 2024

Target	Direction for Improvement	Current Year	Previous Year	Change in Performance
50% reduction from 2018 levels by 2030	↓	97,691	79,599	Declining

RAG Rating

Contextual

Indicator Description

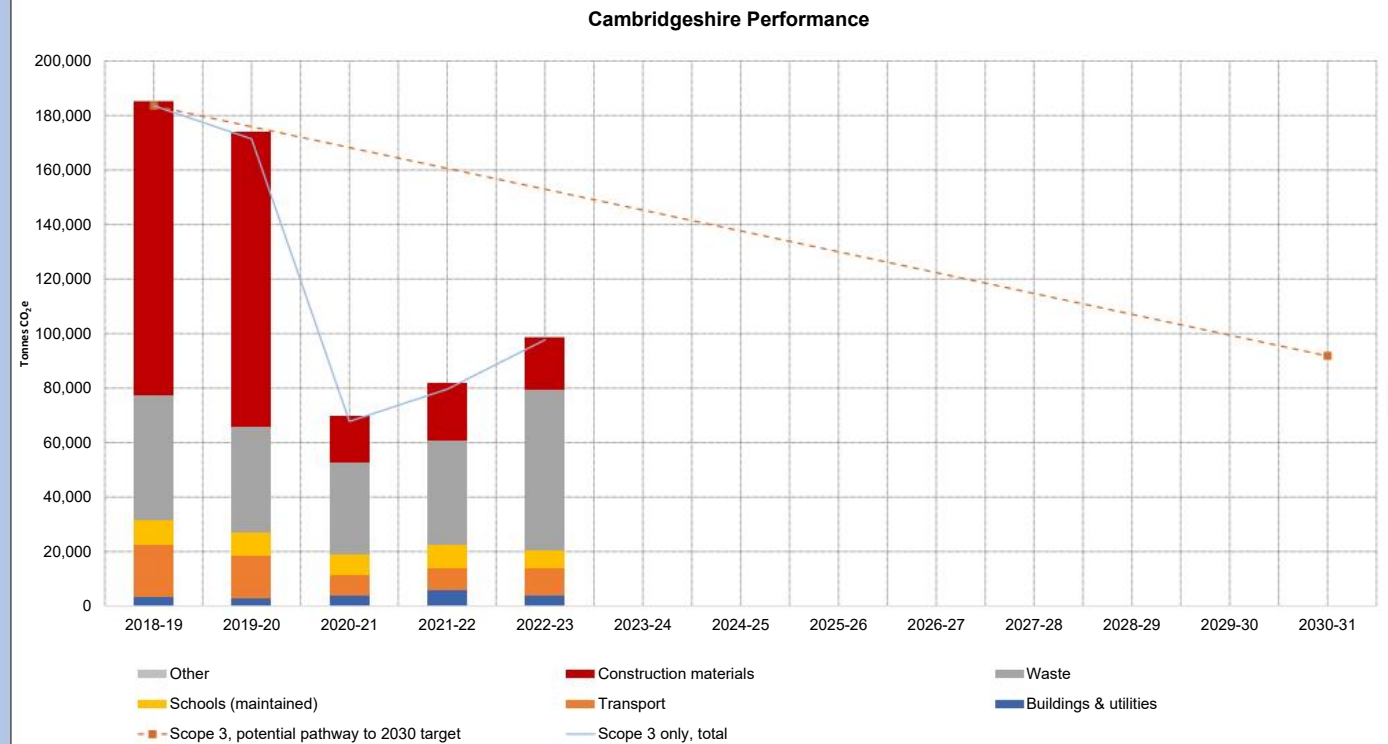
This indicator shows annual progress towards the Council's target set out in the Climate Change and Environment Strategy, of reducing scope 3 emissions by 50% by 2030 (compared to 2018 levels).

Scope 1 means direct emissions from the Council's own assets.

Scope 2 means emissions from purchased electricity.

Scope 3 means indirect emissions from assets outside the Council's control - for example, employee-owned vehicles, purchased goods and services, outsourced activities.

Polarity: Low is good



Commentary

The data shown is all known emissions. There are likely to be further unknown emissions in our supply chain that we do not have any data for.

Construction emissions remain low in 2022-23.

Total emissions have increased in 2022-23 since the previous year but remain below the baseline of 2018-19.

The largest increase is from waste, due to more waste going to landfill that year.

There were also increases in emissions from transport from the increased demand in home to school transport.

Emissions from buildings energy use has gone down, both in council buildings and in schools.

At the time of writing, the 2022-23 data is provisional, and will be confirmed when the annual carbon footprint report is presented to E&GI Committee in January 2024.

Useful Links

<https://www.cambridgeshire.gov.uk/residents/climate-change-energy-and-environment/carbon-footprinting-how-big-is-the-problem>

Actions

Target	Direction for Improvement	Current Year	Previous Year	Change in Performance
Zero by 2045	↓	6,783	6,396	Declining
RAG Rating				
Contextual				

Indicator Description

This data is published by BEIS with a two-year lag. E.g. data for 2020 was published in June 2022.

Now includes CO2, CH4 and N2O, which equates to approx 97% of all greenhouse gas emissions.

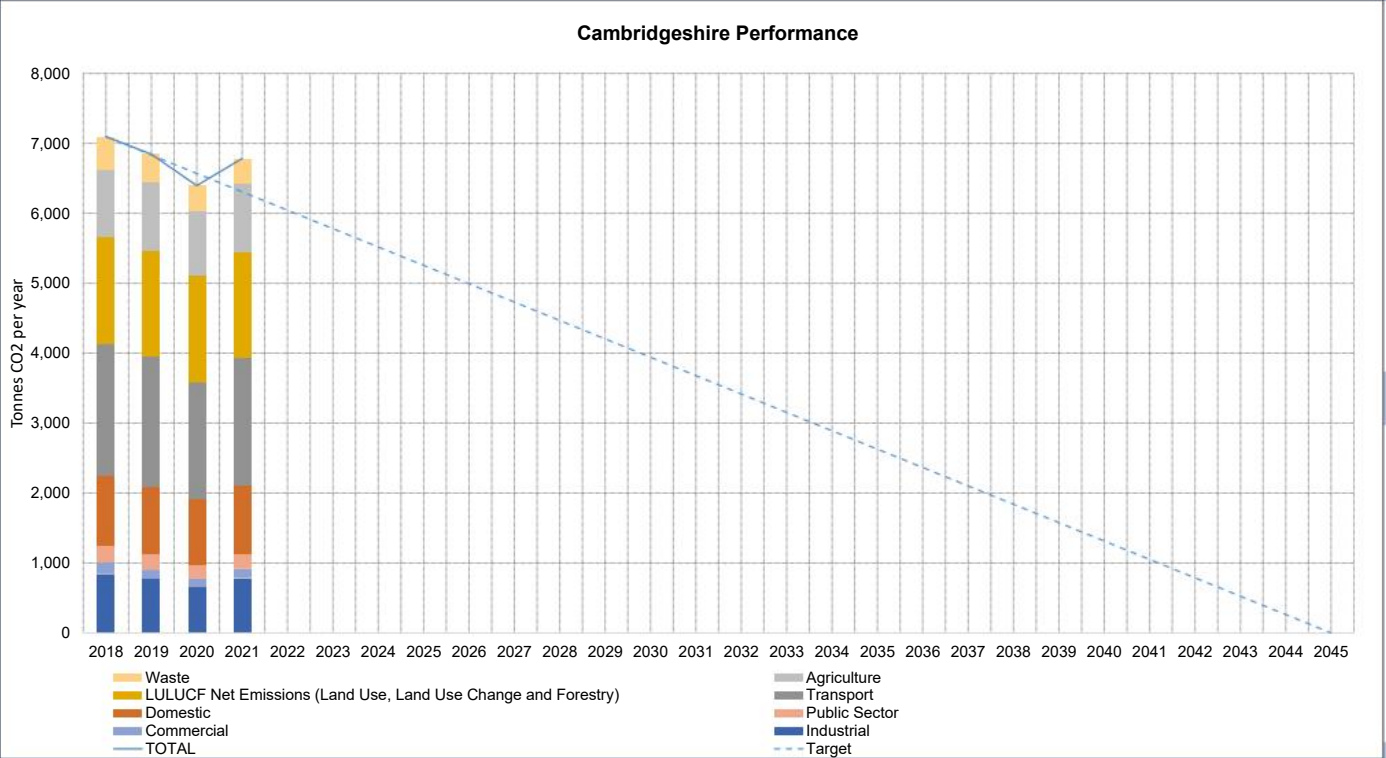
This data includes greenhouse gas emissions from all sources in the geographical area of Cambridgeshire, irrespective of to what extent they are in the control or influence of the Council.

Polarity: Low is good

Useful Links

<https://www.gov.uk/government/collections/uk-local-authority-and-regional-carbon-dioxide-emissions-national-statistics>

<https://www.gov.uk/government/collections/uk-greenhouse-gas-emissions-statistics>



Commentary

GHG emissions have increased in most areas of the UK in 2021, compared to 2020. UK wide GHG emissions increased by 5.9%. This follows a dip in emissions in 2020 due to Covid-19 restrictions. Increases in 2021 are mostly due to easing of Covid-19 restrictions and colder temperatures. This is the same in Cambridgeshire as the rest of the UK.

Emissions in the county in 2021 were 0.9% lower than 2019.

Transport is the highest emitting sector in the county (27%) with 1,814 kt CO2e, most of that is from A roads. Highest transport emissions are in Huntingdonshire then South Cambridgeshire. Land use, land use change (LULUCF) in second place (23%), 1,524 kt CO2e, mostly from cropland, particularly in Fenland and East Cambridgeshire, likely due to large areas of peatland. Agriculture third (14%, 981 kt CO2e), mostly from soils. Domestic fourth (14%, 968 kt CO2e), mostly from gas use for heating.

Actions