

**PAVEMENT LICENCE OBJECTIONS ASSOCIATED WITH CAFÉ MILANO,
ST ANDREWS STREET, CAMBRIDGE**

To: **Cambridge City Joint Area Committee**

Meeting Date: **20th January 2015**

From: **Executive Director: Economy, Transport &
Environment**

*Electoral
division(s):* **Market**

Forward Plan ref: **N/A** *Key decision:* **No**

Purpose: **To determine objections received to the pavement
Licence application associated with Café Milano,
St Andrews Street, Cambridge**

Recommendation: **a) Approve and issue a Pavement Licence for the
proposal, as amended following the statutory
consultation;
b) Inform the objectors accordingly.**

<i>Officer contact:</i>
Name: Richard Lumley
Post: Traffic Manager
Email: richard.lumley@cambridgeshire.gov.uk
Tel: 01223 703839

1. BACKGROUND

- 1.1 Café Milano is located in St Andrews Street, Cambridge between Santander and HSBC (appendix 1).
- 1.2 Following an ongoing review of businesses with tables and chairs it was found that Café Milano did not have a licence and therefore they were asked to make an application. Café Milano has placed tables and chairs on the public highway for a number of years without a Pavement Licence.
- 1.3 They submitted an application for an area 5.3 metres x 1.3 metres across the front of the premise to formalise their existing arrangement (appendix 2) which comprises of four tables each with three chairs. Three tables are outside Café Milano's window and the fourth is between Café Milano's door and HSBC (appendix 3).

2. PAVEMENT LICENCE PROCESS

- 2.1 The Pavement Licence procedure is a statutory consultation process that requires the Highway Authority to advertise, on-street, a public notice stating the proposal. The notice invites the public to comment on the proposals in writing within a twenty eight day notice period.
- 2.2 The Pavement Licence was advertised on-street on 21st October 2014. The statutory consultation period ran from 21st October – 18th November 2014.
- 2.3 The statutory consultation resulted in 4 responses comprising of 1 objection and 3 raising concerns (appendix 4).
- 2.4 Following the end of the statutory consultation period the responders' comments were considered.
- 2.5 On the basis of this analysis, it is recommended that a pavement licence is issued for the area in front of Café Milano's window (appendix 5) a condition of which will be that a barrier is provided to prevent the furniture being moved across Santander's frontage. No furniture will be permitted between Café Milano's door and HSBC.

3. ALIGNMENT WITH CORPORATE PRIORITIES

- 3.1 **Developing the local economy for the benefit of all**
A Pavement licence will enable the business to make the best use of their location and attract customers.
- 3.2 **Helping people live healthy and independent lives**
There are no significant implications for this priority.

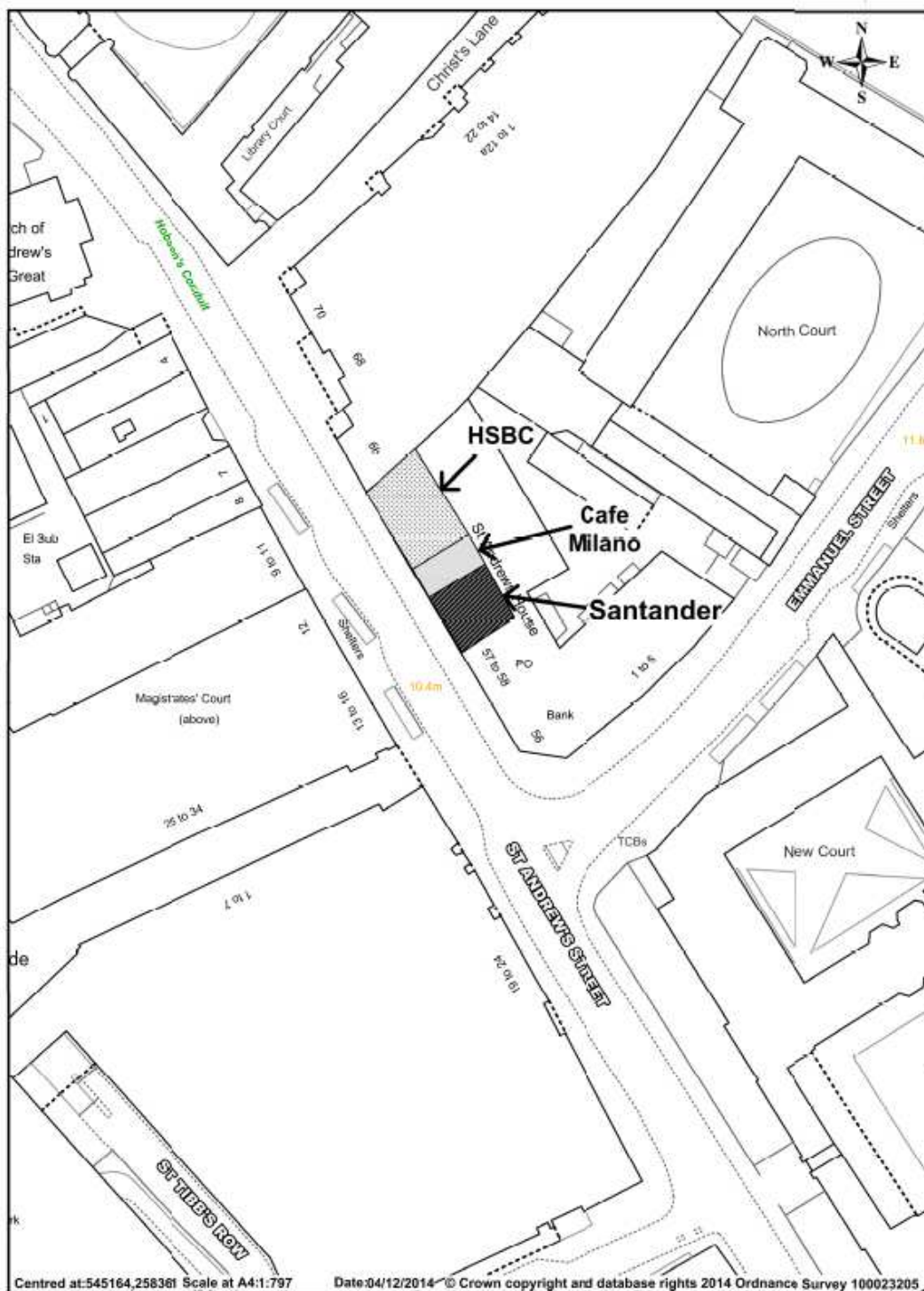
- 3.3 **Supporting and protecting vulnerable people**
There are no significant implications for this priority.

4 SIGNIFICANT IMPLICATIONS

- 4.1 **Resource Implications**
There are no significant implications within this category.
- 4.2 **Statutory, Risk and Legal Implications**
The statutory process for this Pavement Licence has been followed. Should the objections not be determined by this Committee, it may be necessary to hold a public enquiry.
- 4.2 **Equality and Diversity Implications**
There are no significant implications within this category.
- 4.4 **Engagement and Consultation Implications**
The statutory consultees have been consulted – the County Councillors, Police, City Council Environmental Health and Planning services. In addition the ambulance and fire service and City Councillors have been consulted.
- A notice was displayed on-street, outside the premise.
- 4.5 **Localism and Local Member Involvement**
The local members were consulted and County Councillor Cearns supports the amended proposal. Cllr Gerri Bird, Mayor of Cambridge, does not support the proposal.
- 4.6 **Public Health Implications**
The Cambridge City Council Environmental Health team have been consulted and have no concerns.

Source Documents	Location
Consultation responses	Room:209 Shire Hall Castle Hill Cambridge CB3 0AP

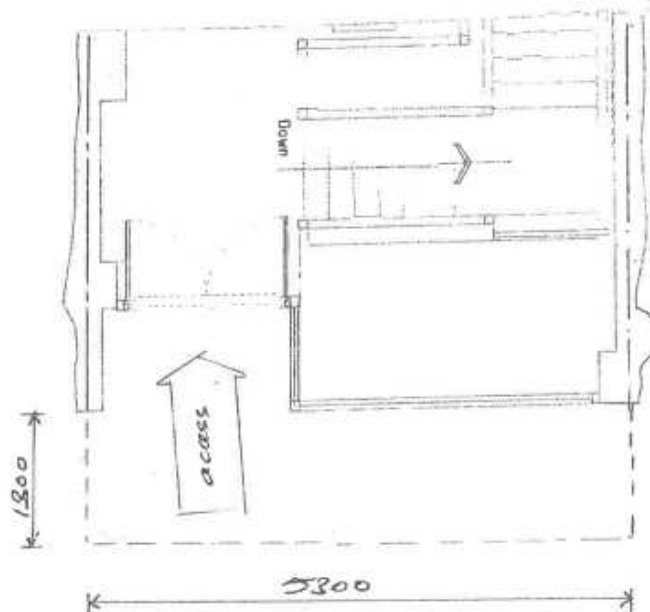
Appendix 1



APPENDIX 2



ELEVATION



550¢ tables
500 x 100 chairs
(see photo)

pavement

62 ST. ANDREW ST., 1050 approx.

PLAN

APPENDIX 3

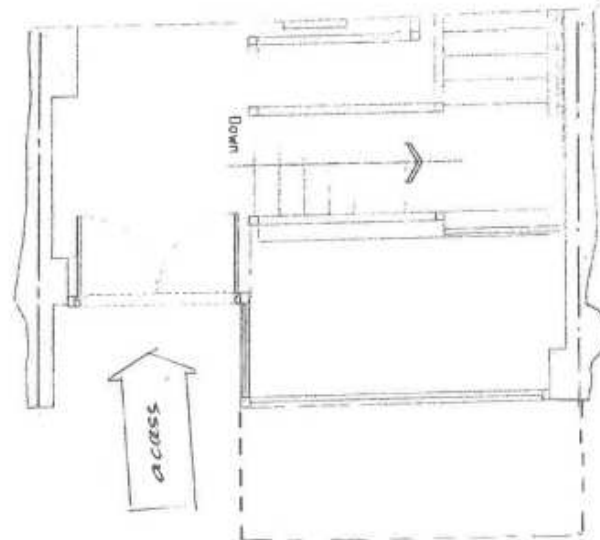


<u>Appendix 4 – RESPONSES RECEIVED</u>		
No.	RESPONSES RECEIVED	OFFICER RESPONSE
1.	The chairs regularly spread out across the pavement and present a risk that customer details can be seen when using the ATM.	A barrier erected on the boundary will prevent the furniture being moved across Santander's frontage.
2.	<p>I have complained several times about the close proximity of the tables and chairs to the cashpoint.</p> <p>I have serious concerns that the licensee will not adhere to the conditions set out within their proposal. I ask that the licence include restrictions such as a limit of three tables and for physical barriers to be placed on the boundary lines considerably reducing my security and privacy concerns.</p>	As above.
3.	The table and chairs are frequently moved towards HSBC's door causing security and access issues for customers.	There is insufficient space for a table and chairs between Café Milano's door and the boundary with HSBC. Furniture should therefore not be permitted on this side.
4.	The tables and chairs are causing disabled people great problems trying to access the city centre. When partially sighted or blind people have to weave around the street furniture it causes problems and confusion.	The footway in this location is 4 metres wide and the furniture will take up 1.3 metres of this. This will leave a residual footway width of 2.7 metres which is sufficient for all users even in a busy location such as this.

APPENDIX 5



ELEVATION



550P tables
500P too chairs
(see photo)

pavement

62 ST. ANDREWS ST., 1050 approx

Verb
PLAN