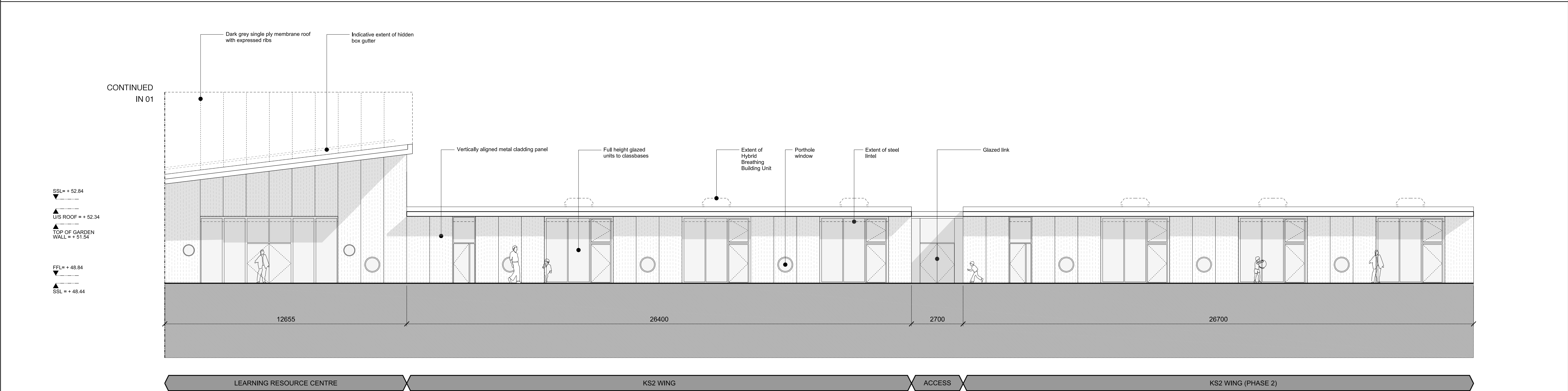


01 SOUTH EAST ELEVATION



02 SOUTH WEST ELEVATION

KEY 	REV	DATE		
	01	07/11/2014	Issued to Design Team - Revised Levels	
	02	02/12/2014	Issued for Planning Submission	
	03	05/12/2014	Revised for Planning Submission	

CONSULTANTS	NAME
CLIENT:	CAMBRIDGESHIRE COUNTY COUNCIL
CLIENT'S REPRESENTATIVE:	FAITHFUL & GOULD
DEVELOPER:	URBAN & CIVIC
CONTRACTOR:	MORGAN SINDALL
PLANNING CONSULTANT:	ALLIANCE PLANNING
STRUCTURAL / CIVIL ENGINEER:	PETER DANN CONSULTING ENGINEERS
MECHANICAL ENGINEER:	EMEC
LANDSCAPE CONSULTANT:	WYNNE WILLIAMS
CDM COORDINATOR:	FAITHFUL & GOULD
TRANSPORT CONSULTANT:	MOTT MACDONALD
FIRE ENGINEER:	MOTT MACDONALD
ACOUSTIC CONSULTANT:	SRL

NOTE

1. Do not scale from this drawing.
2. All dimensions to be checked on site by the contractor and such dimensions to be his responsibility.
3. Report all drawing errors, omissions and discrepancies to the architect.
4. This document may be issued in an uncontrolled CAD format to enable others to use it as background information to make alterations and/or additions. In that instance the file will be accompanied by a PDF version. It is for those making such alterations and additions to ensure that they make use of current background information. AHMM Ltd accepts no liability for any such alterations or additions to the background information or arising out of changes to background information which occur prior to alterations or additions being made.

LOCATION

ALLFORD HALL MONAGHAN MORRIS

ARCHITECTS Ltd
2ND FLOOR, BLOCK C, 5-23 OLD STREET LONDON EC1V 9HL
TEL 020 7261 5261 FAX 020 7261 5123 WEB WWW.AHMM.CO.UK

job title
ALCONBURY WEALD KP1 PRIMARY SCHOOL

drawing title / location
SOUTH FACING ELEVATIONS

drawn by	checked	scale	status		
AW	AR	1:100@A1; 1:200@A3	INFORMATION		
project	zone	type	classification	drawing no	revision
12161		A	[00]	202	03