

Wednesday, 14 December 2022

Democratic and Members' Services

Linda Walker
Monitoring Officer

10:00

New Shire Hall
Alconbury Weald
Huntingdon
PE28 4YE

**Virtual meeting
[Venue Address]**

AGENDA

Open to Public and Press

1. **Apologies for absence and declarations of interest**
2. **Schools Forum Minutes - 4 November 2022** **3 - 10**
3. **Schools Budget Setting 2023-24** **11 - 62**
4. **Any other business**

Meetings of the Schools Forum will be held virtually for Committee members and for members of the public who wish to participate. These meetings will held via Zoom and

Microsoft Teams (for confidential or exempt items). For more information please contact the clerk for the meeting (details provided above).

| | |
|------------------|--|
| Clerk Name: | Tamar Oviatt-Ham |
| Clerk Telephone: | 01223 715668 |
| Clerk Email: | tamar.oviatt-ham@cambridgeshire.gov.uk |

Cambridgeshire Schools Forum - Minutes

Date: Friday 4 November 2022

Time: 14:00pm – 15:30pm

Venue: Red Kite Room, New Shire Hall, Alconbury

Present:

Academy Primary - Susannah Connell

Diocese of Ely Church Schools - Canon Andrew Read

Local Authority Primary - Sasha Howard

Hospital Schooling – Nadine Gooding-Hebert

Maintained Primary – Nicki Brown and Guy Underwood

Maintained Nursery – Alex Pearson

Maintained Special Schools - Joanne Hardwick

Maintained Governor - Paul Stratford (Vice-Chair)

Trade Union – Rob Turner

Other Academy Sector Appointments - Adrian Ball, Christopher Bennet, John King, Duncan Ramsey, Carin Taylor, and Jon Culpin (Chair)

Cambridgeshire County Council - Councillors Claire Daunton and Bryony Goodliffe.

Officers - Jonathan Lewis - Service Director Education, Tamar Oviatt-Ham – Democratic Services Officer and Martin Wade, Strategic Finance Business Partner.

27. Appointment of the Chair

It was resolved unanimously to re-elect Jon Culpin as Chair for the Schools Forum for the municipal years 2022-24.

28. Apologies for Absence and Declarations of Interest

Apologies were received from Simon Bainbridge, Lesley Birch, Clare Clark, Jon Duveen, Ryan Kelsall, Alex Pearson, Richard Spencer, Mark Vickers (substituted by Jo Gillman) and Councillor Simone Taylor.

No declarations of interest were received.

29. Schools Forum Minutes – 25 July

The minutes of the meeting held on 25 July 2022 were approved as a correct record.

The action log was noted.

29. Update on Appointments

Schools Forum were asked to note the new appointments outlined in the report. One vacancy remained for academy appointments.

The presenting officer highlighted that there had been an omission from the report and asked forum to note that Nikki Brown, Headteacher at Morley Memorial Primary School, replaced Liz Bassett as a Maintained Primary Head representative on the forum.

It was resolved to:

Note the new appointments outlined in Section 3.1 of the report.

30. Schools Budget Setting

The forum received a report and a presentation that outlined the 2022-23 Schools Budget setting process, which based itself upon national budget allocation and 2021-22 pupil numbers. The presentation covered;

- Funding Formula;
- High Needs Block Transfers;
- Notional SEN / High Needs Contingency;
- Central School Services Block;

- De-Delegations within maintained primary schools; and
- Growth Funding / new schools.

The national budget allocated to Cambridgeshire was the third a three-year settlement and set in July. Since then, the energy crisis, pay awards, and local government pay settlement had occurred which affected expenditure. However, the national Autumn Budget and Department for Education Budget were anticipated and may affect allocation figures.

In relation to the Funding Formula;

- The officer noted that there was an error on the presentation which should read that data would change following receipt of the October 2022 census, rather than October 2023 census.

Individual members raised the following points in relation to Notional SEN / High Needs Contingency;

- Showed favour for Option 2, in appendix 3 a, which would be updated following receipt of the October 2022 census. This option targeted resources at identified needs.
- Expressed belief that EHCP funding and SEN funding were separate and therefore should be targeted through separate streams, as was modelled in Option 2.
- Noted that the funding offered one off support to schools to contribute towards disproportional numbers of children with special educational needs. Once granted, the school determined use of the money and spending was not controlled by the local authority.
- Showed concern that Option 2 may incentivise EHCPs, which would not produce their desired decrease.
- Highlighted children with a lower level of need as needing to be considered in the decision-making process.
- Suggested and agreed to review modelling of a third option which would consider a combined measure of both Option 1 and 2. **Action Required.**
- Showed support for recommendation d) which would reduce the sense of postcode lottery.

Individual members raised the following points in relation to Central School Services Block;

- Commented upon the broadband subsidiary reduction which caused a significant increase in school costs.

Individual members raised the following points in relation to Growth Funding and new schools;

- Welcomed the reduction of bureaucracy with regard to the new process.
- Noted that, in comparison to other authorities, funding allocations were less generous, but Cambridgeshire offered greater flexibility to new schools and more schools were eligible for growth funding. This process had been influenced by guidelines on best practice.
- Expressed that the process seemed fair and open.
- Noted that the Strategic Finance Manager believed head teacher participation on the Growth Funding Panel had been beneficial and would be repeated.
- A member highlighted that all decisions approved by the forum were not the 'preferred' option, but the 'least bad'.

Individual members raised the following points in relation to the next steps:

- The Autumn Funding Statement would be released 23 November 2022 and inform the school funding budget. It was not anticipated that the schools budget would be protected - early indications suggested palliative but not material measures. A member suggested that this adjustment was therefore political and not child centred.
- Pressed the importance of Schools Forum continuing to vocalise longstanding concern for the impact of funding constraints on standards, employment, sustainability, children's material outcomes, and small school deficits.
- Additional pressures on schools were anticipated to arise from: pay awards; the high court ruling on support staff holidays; an increase in children with high needs following the pandemic; a reduced ability for parents to subsidise costs, such as those associated with swimming or transport, as a result of the cost of the living crisis. It was recognised the pandemic had also increased pressure on the budget for accessing children's health, such as with speech and language therapy. It was also possible Health funding would reduce.
- Staff recruitment and retention was also highlighted as a growing concern. Current staff resilience had been impacted by the pandemic and other sectors offered more money, fewer additional hours and easier work.
- Noted pre-existing actions to establish the dire position of funding:
 - A letter sent from Cambridgeshire Primary Heads and the Maintained Primary Heads.

- A scheduled statement on secondary school pressures from CSH.
 - A letter from the F40 group, which had been circulated to Schools Forum members.
 - A paper to MPs from Cambridgeshire County Council was being developed, which would demonstrate the implications of pressures using qualitative data such as geography, school type, and SEN impact.
 - Challenges and early analysis by Cambridgeshire Primary Heads had been shared with civil servants by Cambridgeshire County Council.
 - A letter had been sent to local MPs which outlined the impact on the average primary school of the £40K uplift for support staff; and for teachers £10K 2022/23, £12k 2023/24. This did not include the impact of inflation or energy prices. Anticipated percentage of schools in deficit were: 2022/23 - 52%; 2023/24 - 80%; 2024/25 - 92%.
- It was suggested that future correspondence and campaigning use quantum data, specific data, and qualitative evidence of the impact on individuals. Asked that forum members gather this data for their schools. The timeframe for submission of this quantitative data would be given after budget consultation.
 - A campaign strategy would be discussed in a meeting between the Chair of Schools Forum and the Director: Education. The following future actions were suggested to highlight the funding gap:
 - A meeting between the Director: Education, the Schools Forum Chair and MPs to highlight safety valve concerns and sector pressures, potentially occurring in January 2023. It would be discussed whether governors and Schools Forum members should also attend.
 - Ask headteachers to emphasise to Ofsted the impact that funding pressures is having on provision.
 - Encourage inspectors to ask how the cost-of-living crisis is impacting schools.
 - Increased campaigning targeting parents and those on the electoral role through organisations such as Schools Forum, Cambridgeshire Primary Heads, Cambridgeshire Secondary Heads. When enacting this, it was suggested that emphasising the impact of the overall funding restraints on an exemplar child may help parents to gain perspective.

- Form agreements with other directorates, such as Health or Business Improvement and Development, which would enable Education to receive income support from them. Calculations could be made for this, however, the Director: Education stated that the school budget was so great that other services could not support them sufficiently.
 - Use the forum as a campaigning platform.
- Recommended reading 'School Costs and Funding: The Coming Crash' by the Institute for Fiscal Studies.

It was resolved to:

Funding Formula

- a) Comment on the proposed LA approach for the Cambridgeshire Schools Funding Formula for 23/24.

High Needs Block Transfer

- b) Following previous discussions in respect of the Safety Valve Intervention Programmed Schools Forum, approve a block transfer between the Schools Block and High Needs Block of 1% - (circa £4.4m – actual amount to be confirmed on receipt of final DSG allocations and subject to Secretary of State approval).

Notional SEN / High Needs Contingency

- c) Comment on the options for allocating the available £450k high needs contingency fund.
- d) Comment on the proposal to increase the percentage of delegated budget identified as notional SEN to align with regional and statistical neighbours

Central School Services Block

- e) Approve the continuation of the £733k contribution to Combined Budgets to support early intervention family workers.
- f) Approve the continuation of the £467k to support the Admissions Service.
- g) Approve the continuation of the £3k to support the servicing of Schools Forum.

- h) Note the proposed budgets for the national copyright licence arrangements, retained duties funding and the residual balance. Final figures will be presented at the January meeting of Schools Forum.

Education Functions and De-Delegations – Maintained Primary only

- i) Maintained Primary School representatives on Schools Forum are asked to note the proposed retained funding and de-delegations to be approved at the December meeting.

Growth Funding and New Schools

- j) Note and comment on the proposed changes to the Growth Funding to apply to 2023/24 only.
- k) Note the proposed variation to pupil numbers. Final numbers will be presented to Schools Forum in January.

31. Agenda Plan

The Democratic Services Officer highlighted that a report on the safety valve would be added to the agenda for the next meeting, pending receipt of response.

It was resolved to:

Note the agenda plan.

32. Any Other Business

No other business was discussed.

Chair

Schools Budget Setting 2023-24

To: Schools Forum

Meeting Date: 14 December 2022

From: Jonathan Lewis – Service Director: Education & Martin Wade –
Strategic Finance Business Partner

Recommendations: **Funding Formula**

- a) Schools Forum are asked to note and comment on the updates to the Dedicated Schools Grant following the Autumn Statement

Notional SEN / High Needs Contingency

- b) Schools Forum are asked to comment on the proposed increases to the % of delegated budget identified as notional SEN.
- c) Schools Forum are asked to comment on the revised option for allocating the available £450k high needs contingency fund in 2022/23.

Education Functions and De-Delegations – Maintained Primary only

- d) Maintained Primary School representatives on Schools Forum are asked to approve:
 - i. the continued retention of £10 per pupil from maintained schools for services specifically provided to maintained schools.
 - ii. the continuation of the de-delegation in respect of Contingency.
 - iii. the continuation of the de-delegation in respect of Free School Meals Eligibility.
 - iv. the continuation of the de-delegation in respect of Maternity and Paternity Cover.
 - v. the continuation of the de-delegation in respect of Trade Union Facilities Time.

Growth Funding and New Schools

- e) Schools Forum are asked to approve the proposed changes to the Growth Funding policy and criteria to apply to 2023/24 only.
- f) Schools Forum are asked to note the proposed variations to pupil numbers.

Officer contact:

Name: Martin Wade

Post: Strategic Finance Business Partner

Email: martin.wade@cambridgeshire.gov.uk

Tel: 01223 699733

1. Background

- 1.1 The presentation (**Appendix 1**) accompanying this report provides information to support the 2023-24 Schools budget setting process and will cover the following areas:
- 2023/24 DSG Funding Arrangements
 - Notional SEN / High Needs Contingency - **Appendix 2 and Appendix 3** provide supporting information.
 - Retained Funding and De-Delegations (Maintained Primary only)
 - Growth Funding / New Schools - **Appendix 4** provides a summary of the latest pupil data and **Appendix 5** is the draft Growth Fund policy to be applied in 2023-24.
 - Next Steps
- 1.2 During the presentation by Officers, Members of Schools Forum will have opportunity to ask questions. Schools Forum will then be asked to comment / vote on the recommendations as required. As in previous years some items will necessitate final updates and/or decisions at the January meeting once further detail has been published.
- 1.3 The table on the following pages shows the main decision-making powers and responsibilities for items relevant at this meeting (other powers such as decisions in respect of deficits, contracts and changes to the Scheme of Financial Management do not apply to the items covered above.)

Schools Forum Roles and Responsibilities

| Function | Local education authority | Schools forum | DfE role |
|--|---|--|---|
| Formula change (including redistributions) | Proposes and decides | Must be consulted | Checks for compliance with regulations |
| Movement of up to 0.5% from the schools block to other blocks | Proposes | Decides | Adjudicates where schools forum does not agree local authority proposal |
| Minimum funding guarantee (MFG) | Proposes any exclusions from MFG for application to DfE | Gives a view | Approval to application for exclusions |
| De-delegation for mainstream maintained schools | Proposes | Maintained primary and secondary school member representatives | Will adjudicate where schools forum does not agree local authority proposal |
| General Duties for maintained schools - Contribution to responsibilities that local authorities hold for maintained schools | Proposes | Would be decided by the relevant maintained school members (primary, secondary, special and PRU). | Adjudicates where schools forum does not agree local authority proposal |
| Central spend on and the criteria for allocating funding from: <ul style="list-style-type: none"> Growth - pre-16 pupils, including new schools set up to meet basic need, whether maintained or academy | Proposes | Decides | Adjudicates where schools forum does not agree local authority proposal |

| | | | |
|---|---|------------------------------|---|
| <ul style="list-style-type: none"> Falling rolls - funding for good or outstanding schools with where growth in pupil numbers is expected within three years | | | |
| Central spend on: <ul style="list-style-type: none"> early years block provision funding to enable all schools to meet the infant class size requirement back-pay for equal pay claims remission of boarding fees at maintained schools and academies places in independent schools for non-SEN pupils admissions servicing of schools forum Contribution to responsibilities that local authorities hold for all schools | Proposes | Decides | Adjudicates where schools forum does not agree local authority proposal |
| Central spend on: <ul style="list-style-type: none"> capital expenditure funded from revenue – projects must have been planned and decided on prior to April 2013 so no new projects can be charged contribution to combined budgets – this is where the schools forum agreed prior to April 2013 a contribution from the schools budget to services which would otherwise be funded from other sources | Proposes up to the value committed in the previous financial year and where expenditure has already been committed. | Decides for each line | Adjudicates where schools forum does not agree local authority proposal |

| | | | |
|--|---------|--|------|
| <ul style="list-style-type: none"> existing termination of employment costs (costs for specific individuals must have been approved prior to April 2013 so no new redundancy costs can be charged) prudential borrowing costs – the commitment must have been approved prior to April 2013 | | | |
| Central spend on: <ul style="list-style-type: none"> high needs block provision central licences negotiated by the Secretary of State | Decides | None, but good practice to inform forum | None |

2023/24 Schools Budgets and Dedicated Schools Grant Funding

Schools Forum – 14th December 2022

Introduction

The purpose of today's presentation is to share with Schools Forum the latest position on Dedicated Schools Grant (DSG) funding in relation to the 2023/24 budget setting round:

1. 2023/24 DSG Funding Arrangements – Autumn Statement
2. Consultation Feedback
3. Notional SEN / High Needs Contingency
4. Retained Funding and De-Delegations (Maintained Primary only)
5. Growth Funding / New Schools
6. Next Steps

Autumn Statement

- ◆ “thank you for your brilliant work – we need it to continue”.
- ◆ “being pro education is being pro-growth”. Education is “not just economic but a moral vision”.
- ◆ The core schools budget in England will receive an additional £2.3 billion of funding in 2023-24 and £2.3 billion in 2024-25.
- ◆ **After adjusting Spending Review 2021 budgets down to account for the removal of the compensation for employer costs of the Health and Social Care Levy, this brings the core schools budget to a total of £58.8 billion in 2024-25, £2 billion greater than published at Spending Review 2021.**
- ◆ This restores 2010 levels of per pupil funding in real terms and provides an average cash increase for every pupil of more than £1,000 by 2024-25, compared to 2021-22

Funding Position

| | Original 2021 Budget £bn | 2022 Autumn Statement £bn | Change £bn | % change from original budget expectation | Overall % increase from previous year |
|---------|-----------------------------------|------------------------------------|---------------|--|---|
| 2021-22 | 49.8 | | | | |
| 2022-23 | 53.8 | | | | 8% |
| 2023-24 | 55.3 | 57.3 | 2 | 3.6% | 7% |
| 2024-25 | 56.8 | 58.8 | 2 | 3.5% | 6% |

Were cost pressures met in 2022-23? Pay rises alone were expected to cost education £1.3bn.

Core Schools Budget

| Core Schools Budget | Total Funding (£m) | Year-on-Year Increase (£m) |
|---------------------|--------------------|----------------------------|
| 2021-22 | 49,800 | |
| 2022-23 | 53,800 | 4,000 |
| 2023-24 | 57,300 | 3,500 |
| 2024-25 | 58,800 | 1,500 |

- ◆ Schools, High Needs and Central School Services Blocks; Pupil Premium.
- ◆ 2024-25: no pupil growth anticipated; low inflation forecasts.
- ◆ No continuation of the Energy Bill Relief Scheme for schools, from April 2023.

Is return to 2010 spending levels something to celebrate?

Extra £2.3bn in school funding will return spending per pupil to above 2010 levels and **cover expected cost pressures**

Real-terms trends in school spending per pupil, based on economy-wide inflation and specific school costs



Source: Updated version of Figure 3, 'School spending and costs: the coming crunch', Luke Sibiet, IFS Briefing Note BN347

The Institute for Fiscal Studies said

- ◆ spending per pupil in 2024-25 will be about 3 per cent above 2010 levels using an “economy-wide inflation captured by the GDP deflator”.
- ◆ if this is adjusted for an estimated index of school-specific costs, spending per pupil will “return almost exactly back to 2010 levels”.
- ◆ “This means that school funding is now forecast to exceed growth in school costs, such as growth in teacher and support staff pay levels. This assumes a teachers pay increase of 3%.

What will it mean for your school?

- ◆ This is not a huge windfall – more likely to create stability and remove the need for immediate decisions on structures etc.
- ◆ We don't know how this funding will be allocated or whether it will be spread across all elements of funding or just schools.
- ◆ No funding increase for early years, post 16, FE or SEND expected (including special schools).
- ◆ Inflation forecast at 7% with a concern around energy protection not continuing for public sector (need to absorb inflation)
- ◆ Assumed 3% teachers pay increase – is this likely to happen?
- ◆ Impact of recessions – more free school meals?

We won't get an updated position until the end of December. Prudent financial management is still needed.

Consultation

- The schools funding formula continues to be an LA decision in 2023-24.
- As in prior years, schools must be consulted on:
 - a) Any changes to the formula being proposed; and
 - b) Any transfer proposed from the Schools Block.
- For 23/24 there are no major changes being proposed to the local funding formula, other than the required alignment with the NFF.

Consultation Responses

- 160+ people attended two virtual budget briefings which were held during November.
- However, **only 1** email submission was received in response to the funding consultation which closed on Friday 2nd December (compared to 47 responses received in respect of last years consultation)
- The response detailed the concerns previously discussed at Schools Forum in respect of the impact of pay awards, energy costs and SEND.

Required Actions

- **Funding Formula**

- a) Schools Forum are asked to note and comment on the updates to the Dedicated Schools Grant following the Autumn Statement

Notional SEN Budget

- As discussed at the previous meeting LA's are required to identify a notional budget for all mainstream schools.
- The notional SEN is not a separate formula factor or funding allocation, so does not generate funding in its own right, but is based on a % of factors which contribute towards a school's overall funding.
- The overall % of budget currently defined as notional SEN within the local formula is low compared to geographical and statistical neighbours.
- As part of the move towards a Direct NFF and to avoid potential cliff edges it was agreed we would move more towards the national average.

Notional SEN Budget

| Factors | Current % | Proposed % |
|---|--------------------|--------------------|
| Basic Entitlement | 4.62% | 6.00% |
| FSM and FSM6 | 7.67% | 10.00% |
| IDCAI | 68.32% | 75.00% |
| Prior Attainment | 33.74% | 45.00% |
| Total value of Notional SEN | £29,696,532 | £38,147,620 |
| Total % of overall Schools Block | 7.11% | 9.13% |

- Statistical neighbour average (excluding Cambridgeshire) in 22/23 = 10.72%
- Eastern Region average (excluding Cambridgeshire) in 22/23 = 9.98%
- **Appendix 2** shows the illustrative school level impact based on 2022/23 budgets.

High Needs Contingency

- At the previous meeting Schools Forum requested officers develop a hybrid methodology which looked at both:
 - The % of EHCPs on role
 - Schools where the cost of the £6,000 contribution exceeded the notional SEN.
- **Appendix 3** shows the proposed school level allocations for 2022/23 based on the revised methodology.
- For the purpose of the revised calculation the October 22 census data has been used for overall pupil numbers and number of EHCPs (adjusted for Units and Enhanced Resource Bases).
- Recognition of in-year changes, but too resource intensive to continually revise.

Required Actions

- ***Notional SEN / High Needs Contingency***
 - b) Schools Forum are asked to comment on the proposed increases to the % of delegated budget identified as notional SEN.
 - c) Schools Forum are asked to comment on the revised option for allocating the available £450k high needs contingency fund in 2022/23.

Retained Duties Funding

- For 2023/24 it is proposed to:
 - Continue to apply the retained duties funding received as per of the CSSB to support ongoing functions.
 - Continue to retain £10 per pupil from maintained schools for services specifically provided to maintained schools.

| <u>Retained Duties Estimates</u> | 2023/24 £000 |
|---|-----------------|
| Estimated Education Functions - £10 per pupil - Maintained Only* | £288 |

*Final amount will be dependent on pupil numbers applied in the final budgets.

De-delegation Amounts

- Apply to maintained primary schools only:

| | Agreed 2022/23 Basis | Proposed 2023/24 Basis |
|--|---------------------------------|-----------------------------------|
| Contingency | £2.10 per pupil | £2.10 per pupil |
| Free School Meals Eligibility | £4.65 per FSM child | £4.65 per FSM child |
| Maternity | £5.00 per pupil | £5.00 per pupil |
| Trade Union Facilities Time | £1.10 per pupil | £1.10 per pupil |

Required Actions

- ***Education Functions and De-delegations:***
 - d) Maintained Primary School representatives on Schools Forum are asked to approve:
 - i. The continued retention of £10 per pupil from maintained schools for services specifically provided to maintained schools.
 - ii. The continuation of the de-delegation in respect of Contingency.
 - iii. The continuation of the de-delegation in respect of Free School Meals Eligibility.
 - iv. The continuation of the de-delegation in respect of Maternity and Paternity Cover.
 - v. The continuation of the de-delegation in respect of Trade Union Facilities Time.

Growth Funding

- **Appendix 4** shows a comparison of the latest October census numbers to both the October 2021 position, and the latest forecasts for 2023/24.
- This data, alongside Place Planning information will form the basis for initial identification of schools potentially eligible for growth funding.
- The proposed revised Growth Fund policy to be applied for 2023/24 can be seen at **Appendix 5**.
- Growth funding is only available to meet basic need.
- Funding would still be allocated as a lump sum per additional class for qualifying schools, but would avoid the need for an application other than in exceptional cases.
- The total cost of implicit growth will not be known until final data is received from the ESFA in mid-December.

Growth Funding

- Propose uplifting funding allocations by 5%
- Not currently proposing a change to the overall centrally retained Growth Fund, which currently stands at £1.67m, but will be reviewed.

| Current 22/23 Funding Rates | | | Proposed 23/24 Funding Rates | | |
|-----------------------------|------------------|--------------------------|------------------------------|------------------|--------------------------|
| Phase | Academic Year | Financial Year (7/12ths) | Phase | Academic Year | Financial Year (7/12ths) |
| Primary (1FE) | £54,000 + £4,000 | £31,500 + £4,000 | Primary (1FE) | £56,700 + £4,000 | £33,075 + £4,000 |
| Secondary (1FE) | £65,000 + £4,000 | £37,917 + £4,000 | Secondary (1FE) | £68,250 + £4,000 | £39,813 + £4,000 |

Variation to Pupil Numbers

| School | Proposed Guaranteed Number 23/24 APT - April to Aug (5/12ths) | Proposed Guaranteed Number 23/24 APT - Sept to Mar (7/12ths) |
|---|---|--|
| Pathfinder Primary | 390 | 450 |
| Trumpington Park Primary | 420 | 480 |
| Wintringham Park | 90 | 120 |
| Northstowe Secondary | 480 | 600 |
| Cromwell Community College (Primary Only) | 90 | 120 |
| Marleigh Primary Academy (opened Sept 22) | 60 | 90 |

Please note: All numbers are still to be confirmed following discussion with schools/MATs

Required Actions

- ***Growth Funding and New Schools – Schools Forum are asked to:***
 - e) Approve the proposed changes to the Growth Funding policy and criteria to apply to 2023/24 only.
 - f) Note the proposed variations to pupil numbers.

Next Steps

- Mid-December 2022 – DfE to publish final DSG allocations
- 13th January 2023 – Schools Forum to review final proposals
- 17th January 2023– Children and Young People Committee to approve final budget proposals
- 21st January 2023– submission of the Authority Proforma Tool (APT) to the Education & Skills Funding Agency (ESFA)
- End of January/Early February 2023 – Primary and Secondary School Budgets to be published (illustrative for academies).
- February/March 2023 – Initial Nursery and Special budgets to be published

Appendix 2 - Notional SEN

| Factors | Current % | Proposed % |
|----------------------------------|-------------|-------------|
| Basic Entitlement | 4.62% | 6.00% |
| FSM and FSM6 | 7.67% | 10.00% |
| IDCAI | 68.32% | 75.00% |
| Prior Attainment | 33.74% | 45.00% |
| Total value of Notional SEN | £29,696,532 | £38,147,620 |
| Total % of overall Schools Block | 7.11% | 9.13% |

| School Name | Cambridgeshire - Notional SEN Budget 2022/23 - Current % | Cambridgeshire - Notional SEN Budget 2022/23 - Proposed % | Increase £ |
|---|---|--|-------------------|
| | £29,696,532 | £38,147,620 | £8,451,087 |
| Abbey College, Ramsey | £386,298 | £494,211 | £107,912 |
| Abbots Ripton CofE Primary School | £21,892 | £28,004 | £6,111 |
| Alconbury CofE Primary School | £53,464 | £70,120 | £16,656 |
| Alderman Jacobs School | £235,152 | £296,145 | £60,992 |
| Alderman Payne Primary School | £50,472 | £61,361 | £10,889 |
| All Saints Interchurch Academy | £68,358 | £86,992 | £18,634 |
| Arbury Primary School | £178,135 | £223,669 | £45,534 |
| Babraham CofE (VC) Primary School | £24,226 | £31,825 | £7,598 |
| Bar Hill Community Primary School | £67,710 | £88,553 | £20,843 |
| Barnabas Oley CofE Primary School | £36,074 | £47,356 | £11,283 |
| Barrington CofE VC Primary School | £32,033 | £42,073 | £10,040 |
| Barton CofE VA Primary School | £24,031 | £31,465 | £7,434 |
| Bassingbourn Primary School | £103,394 | £135,639 | £32,245 |
| Bassingbourn Village College | £239,061 | £312,113 | £73,052 |
| Beaupre Community Primary School | £65,168 | £83,173 | £18,005 |
| Benwick Primary School | £45,593 | £56,509 | £10,916 |
| Bewick Bridge Community Primary School | £56,506 | £73,711 | £17,205 |
| Bottisham Community Primary School | £68,009 | £89,042 | £21,032 |
| Bottisham Village College | £497,458 | £646,119 | £148,661 |
| Bourn CofE Primary Academy | £42,563 | £55,653 | £13,091 |
| Brampton Village Primary School | £164,084 | £215,389 | £51,305 |
| Brington CofE Primary School | £25,274 | £33,119 | £7,846 |
| Buckden CofE Primary School | £83,417 | £109,335 | £25,917 |
| Burrough Green CofE Primary School | £21,889 | £28,681 | £6,792 |
| Burrowmoor Primary School | £127,749 | £161,119 | £33,371 |
| Burwell Village College (Primary) | £115,193 | £151,311 | £36,118 |
| Bury CofE Primary School | £53,653 | £69,798 | £16,145 |
| Bushmead Primary School | £136,677 | £172,719 | £36,042 |
| Caldecote Primary School | £42,065 | £55,091 | £13,027 |
| Cambourne Village College | £452,212 | £592,822 | £140,610 |
| Cambridge Academy for Science and Technology | £117,935 | £151,918 | £33,983 |
| Castle Camps Church of England (Controlled) Primary School | £34,606 | £44,823 | £10,217 |
| Cavalry Primary School | £170,873 | £213,847 | £42,974 |
| Cherry Hinton Church of England Voluntary Controlled Primary School | £60,425 | £78,383 | £17,958 |
| Chesterton Community College | £431,174 | £546,043 | £114,868 |
| Chesterton Primary School | £75,590 | £94,381 | £18,792 |
| Cheveley CofE Primary School | £33,245 | £43,526 | £10,281 |
| Clarkson Infants School | £87,316 | £106,606 | £19,289 |
| Coates Primary School | £54,667 | £69,547 | £14,880 |
| Coleridge Community College | £300,429 | £379,526 | £79,097 |
| Colville Primary School | £79,738 | £102,606 | £22,869 |
| Comberton Village College | £476,213 | £622,986 | £146,773 |
| Coton Church of England (Voluntary Controlled) Primary School | £28,781 | £37,759 | £8,978 |
| Cottenham Primary School | £165,841 | £208,371 | £42,530 |
| Cottenham Village College | £355,338 | £451,727 | £96,390 |
| Cromwell Academy | £53,728 | £70,194 | £16,467 |
| Cromwell Community College | £582,210 | £737,438 | £155,228 |
| Crosshall Infant School Academy | £80,716 | £104,687 | £23,971 |
| Crosshall Junior School | £125,382 | £162,407 | £37,025 |
| Ditton Lodge Primary School | £45,181 | £59,113 | £13,932 |
| Downham Feoffees Primary Academy | £41,532 | £54,355 | £12,823 |
| Dry Drayton CofE (C) Primary School | £16,737 | £22,012 | £5,275 |
| Duxford Church of England Community Primary School | £53,518 | £70,382 | £16,864 |
| Earith Primary School | £25,109 | £32,587 | £7,478 |
| Eastfield Infant and Nursery School | £44,054 | £57,839 | £13,785 |
| Elm CofE Primary School | £94,904 | £117,164 | £22,261 |
| Elm Road Primary School | £100,138 | £123,643 | £23,505 |
| Elsworth CofE VA Primary School | £28,613 | £37,564 | £8,951 |
| Ely College | £482,352 | £622,896 | £140,544 |
| Ely St John's Community Primary School | £107,708 | £139,770 | £32,062 |
| Ely St Mary's CofE Junior School | £102,878 | £132,349 | £29,472 |
| Ermine Street Church Academy | £70,699 | £92,315 | £21,616 |
| Ernulf Academy | £332,957 | £425,107 | £92,150 |
| Eynesbury CofE C Primary School | £47,478 | £61,593 | £14,115 |

| | | | |
|---|----------|----------|----------|
| Farcet CofE (C) Primary School | £42,513 | £52,748 | £10,235 |
| Fawcett Primary School | £111,551 | £146,548 | £34,997 |
| Fen Ditton Primary School | £67,861 | £84,401 | £16,540 |
| Fen Drayton Primary School | £24,761 | £32,424 | £7,663 |
| Fenstanton and Hilton Primary School | £64,493 | £84,745 | £20,252 |
| Folksworth CofE Primary School | £22,374 | £28,900 | £6,526 |
| Fordham CofE Primary School | £89,462 | £116,956 | £27,494 |
| Fourfields Community Primary School | £161,610 | £207,448 | £45,839 |
| Fowlmere Primary School | £22,806 | £29,841 | £7,035 |
| Foxton Primary School | £26,086 | £34,289 | £8,202 |
| Friday Bridge Community Primary School | £47,232 | £57,612 | £10,380 |
| Fulbourn Primary School | £63,588 | £83,143 | £19,555 |
| Gamlingay First School | £96,190 | £125,943 | £29,753 |
| Girton Glebe Primary School | £45,732 | £59,718 | £13,985 |
| Glebelands Primary Academy | £141,004 | £180,539 | £39,535 |
| Godmanchester Bridge Academy | £52,787 | £69,135 | £16,348 |
| Godmanchester Community Academy | £101,599 | £132,821 | £31,222 |
| Gorefield Primary School | £35,639 | £45,357 | £9,717 |
| Great Abington Primary School | £36,192 | £47,508 | £11,317 |
| Great and Little Shelford CofE (Aided) Primary School | £52,360 | £68,711 | £16,350 |
| Great Gidding CofE Primary School | £15,056 | £19,677 | £4,621 |
| Great Paxton CofE Primary School | £26,481 | £34,649 | £8,168 |
| Great Staughton Primary School | £15,751 | £20,544 | £4,793 |
| Great Wilbraham CofE Primary School | £21,179 | £27,742 | £6,564 |
| Guilden Morden CofE Primary Academy | £13,415 | £17,616 | £4,201 |
| Guyhirn CofE VC Primary School | £32,487 | £40,165 | £7,677 |
| Hardwick and Cambourne Community Primary School | £116,516 | £152,576 | £36,060 |
| Harston and Newton Community Primary School | £30,892 | £40,490 | £9,599 |
| Hartford Infant School | £66,605 | £83,370 | £16,765 |
| Hartford Junior School | £96,130 | £121,173 | £25,044 |
| Haslingfield Endowed Primary School | £34,342 | £44,960 | £10,618 |
| Hatton Park Primary School | £91,025 | £118,953 | £27,927 |
| Hauxton Primary School | £22,462 | £29,425 | £6,964 |
| Hemingford Grey Primary School | £73,467 | £96,197 | £22,730 |
| Hinchingbrooke School | £624,247 | £810,059 | £185,812 |
| Histon and Impington Infant School | £86,117 | £112,545 | £26,428 |
| Histon and Impington Junior School | £115,272 | £150,100 | £34,829 |
| Holme CofE Primary School | £27,909 | £36,425 | £8,515 |
| Holywell CofE Primary School | £44,951 | £58,885 | £13,933 |
| Houghton Primary School | £50,471 | £65,659 | £15,188 |
| Huntingdon Primary School | £183,562 | £229,389 | £45,827 |
| Impington Village College | £430,008 | £554,944 | £124,935 |
| Isle of Ely Primary School | £105,859 | £137,335 | £31,476 |
| Isleham Church of England Primary School | £53,579 | £70,312 | £16,733 |
| Jeavons Wood Primary School | £104,666 | £137,281 | £32,614 |
| Kennett Primary School | £21,673 | £28,244 | £6,570 |
| Kettlefields Primary School | £28,217 | £36,870 | £8,653 |
| Kimbolton Primary Academy | £14,562 | £19,044 | £4,482 |
| Kinderley Primary School | £29,446 | £36,439 | £6,993 |
| Kings Hedges Primary School | £183,557 | £229,920 | £46,363 |
| Kingsfield Primary School | £146,634 | £185,457 | £38,823 |
| Lantern Community Primary School | £104,698 | £134,692 | £29,994 |
| Leverington Primary Academy | £83,046 | £103,603 | £20,557 |
| Linton CofE Infant School | £44,461 | £58,306 | £13,845 |
| Linton Heights Junior School | £61,741 | £81,013 | £19,272 |
| Linton Village College | £297,502 | £388,272 | £90,770 |
| Lionel Walden Primary School | £53,059 | £68,939 | £15,880 |
| Little Paxton Primary School | £94,464 | £123,732 | £29,268 |
| Little Thetford CofE VC Primary School | £21,590 | £28,229 | £6,639 |
| Littleport & East Cambs Academy | £240,130 | £311,874 | £71,744 |
| Littleport Community Primary School | £104,790 | £137,093 | £32,304 |
| Longsands Academy | £574,962 | £744,812 | £169,849 |
| Manea Community Primary School | £94,115 | £116,284 | £22,169 |
| Marleigh Primary Academy | £10,871 | £13,975 | £3,104 |
| Mayfield Primary School | £120,636 | £155,086 | £34,450 |
| Meadow Primary School | £49,434 | £64,743 | £15,309 |
| Melbourn Primary School | £108,115 | £141,971 | £33,857 |
| Melbourn Village College | £236,752 | £310,272 | £73,520 |
| Meldreth Primary School | £54,983 | £72,147 | £17,164 |
| Mepal and Witcham Church of England Primary School | £26,154 | £34,264 | £8,111 |
| Meridian Primary School | £51,324 | £67,381 | £16,057 |
| Middlefield Primary Academy | £52,661 | £68,573 | £15,912 |
| Millfield Primary School | £96,453 | £126,387 | £29,935 |
| Milton Church of England Primary School | £79,660 | £103,600 | £23,940 |
| Milton Road Primary School | £116,177 | £149,064 | £32,887 |
| Monkfield Park Primary School | £101,026 | £132,359 | £31,332 |
| Morley Memorial Primary School | £107,765 | £140,826 | £33,061 |
| Murrow Primary Academy | £44,821 | £54,401 | £9,580 |
| Neale-Wade Academy | £750,806 | £940,314 | £189,508 |
| New Road Primary School | £78,363 | £97,566 | £19,203 |

| | | | |
|---|----------|------------|----------|
| Newnham Croft Primary School | £54,609 | £71,348 | £16,739 |
| North Cambridge Academy | £375,496 | £465,864 | £90,368 |
| Northstowe Secondary School | £149,354 | £193,954 | £44,600 |
| Oakington CofE VA Primary School | £33,404 | £43,490 | £10,086 |
| Offord Primary School | £24,466 | £32,154 | £7,688 |
| Orchard Park Community Primary School | £73,280 | £94,344 | £21,064 |
| Orchards Church of England Primary School | £225,381 | £275,015 | £49,634 |
| Over Primary School | £54,044 | £70,624 | £16,580 |
| Park Lane Primary & Nursery School | £120,614 | £154,986 | £34,371 |
| Park Street CofE Primary School | £31,379 | £40,881 | £9,502 |
| Parkside Community College | £234,431 | £304,651 | £70,220 |
| Pathfinder Primary School | £100,837 | £131,995 | £31,158 |
| Peckover Primary School | £189,474 | £234,446 | £44,972 |
| Pendragon Community Primary School | £90,291 | £118,330 | £28,039 |
| Petersfield CofE Aided Primary School | £30,480 | £39,990 | £9,510 |
| Priory Junior School | £99,235 | £127,559 | £28,324 |
| Priory Park Infant School & Playgroup | £80,464 | £103,145 | £22,681 |
| Queen Edith Primary School | £121,326 | £158,048 | £36,722 |
| Queen Emma Primary School | £106,238 | £137,513 | £31,275 |
| Ramnoth Junior School | £169,834 | £210,627 | £40,794 |
| Ramsey Junior School | £90,230 | £115,662 | £25,432 |
| Ramsey Spinning Infant School | £67,557 | £86,268 | £18,711 |
| Ridgefield Primary School | £69,020 | £88,022 | £19,001 |
| Robert Arkenstall Primary School | £65,986 | £86,337 | £20,351 |
| Sawston Village College | £379,711 | £497,272 | £117,560 |
| Sawtry Infants' School | £47,436 | £62,211 | £14,775 |
| Sawtry Junior Academy | £63,929 | £83,697 | £19,768 |
| Sawtry Village Academy | £299,481 | £391,979 | £92,498 |
| Shirley Community Primary School | £173,973 | £218,804 | £44,831 |
| Sir Harry Smith Community College | £456,565 | £575,556 | £118,992 |
| Soham Village College | £517,268 | £677,739 | £160,471 |
| Somersham Primary School | £74,332 | £97,482 | £23,150 |
| Spaldwick Community Primary School | £21,878 | £28,689 | £6,811 |
| Spring Meadow Infant School | £56,838 | £73,106 | £16,269 |
| St Alban's Catholic Primary School | £55,482 | £71,931 | £16,449 |
| St Andrew's CofE Primary School | £109,865 | £144,270 | £34,405 |
| St Anne's CofE Primary School | £56,627 | £74,263 | £17,636 |
| St Bede's Inter-Church School | £318,711 | £408,180 | £89,469 |
| St Helen's Primary School | £43,594 | £57,185 | £13,591 |
| St Ivo School | £538,334 | £705,313 | £166,979 |
| St John's CofE Primary School | £155,263 | £192,992 | £37,729 |
| St Laurence's Catholic Primary School | £103,302 | £129,384 | £26,082 |
| St Luke's CofE Primary School | £42,494 | £54,930 | £12,436 |
| St Mary's Church of England Primary School St Neots | £43,356 | £55,110 | £11,754 |
| St Matthew's Primary School | £152,674 | £198,815 | £46,141 |
| St Pauls CofE VA Primary School | £40,494 | £52,998 | £12,505 |
| St Peter's CofE Aided Junior School | £122,243 | £150,555 | £28,312 |
| St Peter's School | £622,634 | £785,070 | £162,436 |
| St Philip's CofE Aided Primary School | £85,550 | £109,478 | £23,928 |
| Stapleford Community Primary School | £45,874 | £60,100 | £14,226 |
| Steeple Morden CofE VC Primary School | £48,065 | £63,126 | £15,060 |
| Stilton Church of England Primary Academy | £38,174 | £49,954 | £11,781 |
| Stretham Community Primary School | £50,373 | £66,235 | £15,862 |
| Stukeley Meadows Primary School | £108,433 | £141,482 | £33,050 |
| Sutton CofE VC Primary School | £87,454 | £115,184 | £27,730 |
| Swaffham Bulbeck Church of England Primary School | £26,073 | £34,156 | £8,083 |
| Swaffham Prior Church of England Academy | £30,476 | £40,088 | £9,612 |
| Swavesey Primary School | £81,234 | £106,443 | £25,210 |
| Swavesey Village College | £440,417 | £576,380 | £135,963 |
| Teversham CofE VA Primary School | £65,859 | £83,698 | £17,839 |
| The Ashbeach Primary School | £37,425 | £48,844 | £11,419 |
| The Bellbird Primary School | £102,792 | £134,808 | £32,016 |
| The Elton CofE Primary School of the Foundation of Frances and Jane Proby | £38,287 | £49,791 | £11,503 |
| The Galfrid Academy | £161,879 | £201,975 | £40,096 |
| The Grove Primary School | £101,807 | £127,520 | £25,714 |
| The Icknield Primary School | £51,560 | £67,676 | £16,116 |
| The Nene Infant & Nursery School | £102,223 | £125,583 | £23,360 |
| The Netherhall School | £379,986 | £489,085 | £109,100 |
| The Newton Community Primary School | £14,132 | £18,464 | £4,332 |
| The Rackham Church of England Primary School | £74,010 | £96,821 | £22,811 |
| The Round House Primary Academy | £106,847 | £140,170 | £33,323 |
| The Shade Primary School | £55,773 | £73,131 | £17,358 |
| The Spinney Primary School | £53,787 | £70,340 | £16,553 |
| The Vine Inter-Church Primary School | £100,796 | £132,217 | £31,421 |
| The Weatheralls Primary School | £128,690 | £168,983 | £40,293 |
| Thomas Clarkson Academy | £913,826 | £1,125,504 | £211,678 |
| Thomas Eaton Primary Academy | £49,970 | £64,696 | £14,726 |
| Thongsley Fields Primary and Nursery School | £125,506 | £156,807 | £31,301 |
| Thorndown Primary School | £144,089 | £188,734 | £44,645 |
| Thriplow CofE VA Primary School | £27,699 | £36,224 | £8,525 |

| | | | |
|---|----------|----------|---------|
| Townley Primary School | £37,224 | £45,927 | £8,702 |
| Trumpington Community College | £175,979 | £230,440 | £54,461 |
| Trumpington Meadows Primary School | £78,723 | £103,569 | £24,846 |
| Trumpington Park Primary School | £103,468 | £135,668 | £32,200 |
| University of Cambridge Primary School | £150,871 | £195,871 | £45,000 |
| Upwood Primary Academy | £58,446 | £75,911 | £17,465 |
| Warboys Community Primary School | £121,579 | £154,446 | £32,867 |
| Waterbeach Community Primary School | £120,433 | £158,048 | £37,615 |
| Westfield Junior School | £74,481 | £97,454 | £22,973 |
| Westwood Primary School | £311,176 | £390,455 | £79,279 |
| Wheatfields Primary School | £92,887 | £121,943 | £29,057 |
| Wilburton CofE Primary School | £34,225 | £45,015 | £10,790 |
| William de Yaxley Church of England Academy | £68,545 | £88,307 | £19,762 |
| William Westley Church of England VC Primary School | £49,745 | £65,249 | £15,505 |
| Willingham Primary School | £119,844 | £150,407 | £30,563 |
| Winhills Primary Academy | £82,612 | £105,188 | £22,575 |
| Wintringham Primary Academy | £26,671 | £34,992 | £8,321 |
| Wisbech St Mary CofE Academy | £92,298 | £111,792 | £19,493 |
| Witchford Village College | £270,622 | £353,440 | £82,817 |
| Wyton on the Hill Community Primary School | £53,408 | £69,724 | £16,316 |
| Yaxley Infant School | £41,504 | £53,694 | £12,190 |

Appendix 3 - High Needs Block Contingency

Calculations below are for the financial year April to March and as such the Notional SEN figures to be applied for academies have been calculated 5/12th / 7/12th as are across two financial years.

| | | | | Number of Schools < £0 | | 39 | | | | | |
|---|--|--|--|--|--|---|-----------------------------------|-------------------------------------|---|---|---|
| | | | | Contingency Cost (total of schools over >£500) | | £471,868 | | | | | |
| | | | | | | 95% | | | | | |
| | | | | | | Difference to Cambridgeshire Notional SEN with % Threshold applied (highlighted less than £0) | | | | | |
| | | | | | | Contingency Funding (if total >£500) and EHCPs as % of Roll >4% | | | | | |
| School Name | Cambridgeshire Notional SEN Budget 2021/22 | Cambridgeshire Notional SEN Budget 2022/23 | Cambridgeshire Notional SEN Budget 2022/23 - Academies - Academic Year - 5/12th / 7/12th | October 2022 Census R-11 | Number of EHCPs (Excluding High Needs Units / Enhanced Resource Bases) | EHCPs as % of Roll (highlighted > 4%) | EHCPs as % of Roll 4% or Greater? | Potential Illustrative cost of £6ks | Illustrative Difference to Cambridgeshire Notional SEN (highlighted less than £0) | Difference to Cambridgeshire Notional SEN with % Threshold applied (highlighted less than £0) | Contingency Funding (if total >£500) and EHCPs as % of Roll >4% |
| | £28,522,745 | £29,696,532 | £21,142,519 | 84,226.0 | 2,662.0 | 3.2% | | £15,972,000 | £13,316,297 | £11,851,882 | £469,331 |
| Abbey College, Ramsey | £371,964 | £386,298 | £380,326 | 943.0 | 24.0 | 2.5% | No | £144,000 | £236,326 | £217,309 | £0 |
| Abbots Ripton CoFE Primary School | £21,668 | £21,892 | £0 | 101.0 | 0.0 | 0.0% | No | £0 | £21,892 | £20,798 | £0 |
| Alconbury CoFE Primary School | £46,236 | £53,464 | £0 | 205.0 | 10.0 | 4.9% | Yes | £60,000 | £-6,536 | £-9,209 | £9,209 |
| Alderman Jacobs School | £230,585 | £235,152 | £233,249 | 626.0 | 17.0 | 2.7% | No | £102,000 | £131,249 | £119,587 | £0 |
| Alderman Payne Primary School | £50,033 | £50,472 | £0 | 100.0 | 7.0 | 7.0% | Yes | £42,000 | £8,472 | £5,948 | £0 |
| All Saints Interchurch Academy | £68,000 | £68,358 | £68,209 | 197.0 | 8.0 | 4.1% | Yes | £48,000 | £20,209 | £16,798 | £0 |
| Arbury Primary School | £173,799 | £178,135 | £0 | 371.0 | 4.0 | 1.1% | No | £24,000 | £154,135 | £145,228 | £0 |
| Babraham CoFE (VC) Primary School | £24,759 | £24,226 | £24,448 | 88.0 | 0.0 | 0.0% | No | £0 | £24,448 | £23,226 | £0 |
| Bar Hill Community Primary School | £67,237 | £67,710 | £67,513 | 266.0 | 11.0 | 4.1% | Yes | £66,000 | £1,513 | £-1,863 | £1,863 |
| Barnabas Oley CoFE Primary School | £37,443 | £36,074 | £0 | 147.0 | 1.0 | 0.7% | No | £6,000 | £30,074 | £28,270 | £0 |
| Barrington CoFE VC Primary School | £27,232 | £32,033 | £0 | 134.0 | 4.0 | 3.0% | No | £24,000 | £8,033 | £6,431 | £0 |
| Barton CoFE VA Primary School | £23,377 | £24,031 | £0 | 103.0 | 6.0 | 5.8% | Yes | £36,000 | £-11,969 | £-13,170 | £13,170 |
| Bassingbourn Primary School | £96,457 | £103,394 | £0 | 388.0 | 9.0 | 2.3% | No | £54,000 | £49,394 | £44,225 | £0 |
| Bassingbourn Village College | £228,737 | £239,061 | £234,759 | 674.0 | 12.0 | 1.8% | No | £72,000 | £162,759 | £151,022 | £0 |
| Beaupre Community Primary School | £56,638 | £65,168 | £0 | 186.0 | 0.0 | 0.0% | No | £0 | £65,168 | £61,910 | £0 |
| Benwick Primary School | £45,768 | £45,593 | £0 | 104.0 | 6.0 | 5.8% | Yes | £36,000 | £9,593 | £7,314 | £0 |
| Bewick Bridge Community Primary School | £58,746 | £56,506 | £0 | 187.0 | 11.0 | 5.9% | Yes | £66,000 | £-9,494 | £-12,319 | £12,319 |
| Bottisham Community Primary School | £65,923 | £68,009 | £67,140 | 281.0 | 6.0 | 2.1% | No | £36,000 | £31,140 | £27,783 | £0 |
| Bottisham Village College | £459,847 | £497,458 | £481,787 | 1,402.0 | 47.0 | 3.4% | No | £282,000 | £199,787 | £175,697 | £0 |
| Bourn CoFE Primary Academy | £44,142 | £42,563 | £43,221 | 206.0 | 4.0 | 1.9% | No | £24,000 | £19,221 | £17,060 | £0 |
| Brampton Village Primary School | £149,610 | £164,084 | £0 | 602.0 | 16.0 | 2.7% | No | £96,000 | £68,084 | £59,880 | £0 |
| Brington CoFE Primary School | £22,156 | £25,274 | £0 | 109.0 | 3.0 | 2.8% | No | £18,000 | £7,274 | £6,010 | £0 |
| Buckden CoFE Primary School | £77,125 | £83,417 | £80,795 | 325.0 | 15.0 | 4.6% | Yes | £90,000 | £-9,205 | £-13,244 | £13,244 |
| Burrough Green CoFE Primary School | £22,036 | £21,889 | £0 | 87.0 | 2.0 | 2.3% | No | £12,000 | £9,889 | £8,795 | £0 |
| Burrowmoor Primary School | £137,038 | £127,749 | £131,619 | 330.0 | 4.0 | 1.2% | No | £24,000 | £107,619 | £101,038 | £0 |
| Burwell Village College (Primary) | £116,357 | £115,193 | £0 | 394.0 | 3.0 | 0.8% | No | £18,000 | £97,193 | £91,433 | £0 |
| Bury CoFE Primary School | £49,242 | £53,653 | £51,815 | 189.0 | 5.0 | 2.6% | No | £30,000 | £21,815 | £19,224 | £0 |
| Bushmead Primary School | £124,493 | £136,677 | £0 | 358.0 | 9.0 | 2.5% | No | £54,000 | £82,677 | £75,843 | £0 |
| Caldecote Primary School | £46,444 | £42,065 | £0 | 194.0 | 2.0 | 1.0% | No | £12,000 | £30,065 | £27,961 | £0 |
| Cambourne Village College | £420,698 | £452,212 | £439,081 | 1,299.0 | 57.0 | 4.4% | Yes | £342,000 | £97,081 | £75,127 | £0 |
| Cambridge Academy for Science and Technology | £95,365 | £117,935 | £108,530 | 293.0 | 0.0 | 0.0% | No | £0 | £108,530 | £103,104 | £0 |
| Castle Camps Church of England (Controlled) Primary School | £31,807 | £34,606 | £0 | 127.0 | 3.0 | 2.4% | No | £18,000 | £16,606 | £14,876 | £0 |
| Cavalry Primary School | £171,714 | £170,873 | £171,223 | 407.0 | 13.0 | 3.2% | No | £78,000 | £93,223 | £84,662 | £0 |
| Cherry Hinton Church of England Voluntary Controlled Primary School | £56,346 | £60,425 | £0 | 173.0 | 7.0 | 4.0% | Yes | £42,000 | £18,425 | £15,404 | £0 |
| Chesterton Community College | £416,232 | £431,174 | £424,948 | 1,013.0 | 23.0 | 2.3% | No | £138,000 | £286,948 | £265,701 | £0 |
| Chesterton Primary School | £71,464 | £75,590 | £73,871 | 190.0 | 4.0 | 2.1% | No | £24,000 | £49,871 | £46,177 | £0 |
| Cheveley CoFE Primary School | £32,672 | £33,245 | £0 | 138.0 | 2.0 | 1.4% | No | £12,000 | £21,245 | £19,583 | £0 |
| Clarkson Infants School | £89,694 | £87,316 | £0 | 163.0 | 6.0 | 3.7% | No | £36,000 | £51,316 | £46,950 | £0 |
| Coates Primary School | £52,293 | £54,667 | £0 | 195.0 | 4.0 | 2.1% | No | £24,000 | £30,667 | £27,933 | £0 |
| Coleridge Community College | £282,461 | £300,429 | £292,942 | 562.0 | 16.0 | 2.8% | No | £96,000 | £196,942 | £182,295 | £0 |
| Colville Primary School | £88,920 | £79,738 | £0 | 214.0 | 14.0 | 6.5% | Yes | £84,000 | £-4,262 | £-8,249 | £8,249 |
| Comberton Village College | £462,913 | £476,213 | £470,672 | 1,481.0 | 64.0 | 4.3% | Yes | £384,000 | £86,672 | £63,138 | £0 |
| Coton Church of England (Voluntary Controlled) Primary School | £29,937 | £28,781 | £0 | 109.0 | 7.0 | 6.4% | Yes | £42,000 | £-13,219 | £-14,658 | £14,658 |
| Cottenham Primary School | £159,713 | £165,841 | £0 | 482.0 | 17.0 | 3.5% | No | £102,000 | £63,841 | £55,549 | £0 |
| Cottenham Village College | £354,849 | £355,338 | £355,134 | 874.0 | 36.0 | 4.1% | Yes | £216,000 | £139,134 | £121,377 | £0 |
| Cromwell Academy | £50,393 | £53,728 | £52,338 | 200.0 | 11.0 | 5.5% | Yes | £66,000 | £-13,662 | £-16,279 | £16,279 |
| Cromwell Community College | £545,523 | £582,210 | £566,924 | 1,273.0 | 47.0 | 3.7% | No | £282,000 | £284,924 | £256,578 | £0 |
| Crosshall Infant School Academy | £97,000 | £80,716 | £87,501 | 259.0 | 5.0 | 1.9% | No | £30,000 | £57,501 | £53,126 | £0 |

Appendix 3 - High Needs Block Contingency

Contingency Funding allocated to Schools with EHCPs 4% or greater of School Roll and Exceeding Notional SEN

Calculations below are for the financial year April to March and as such the Notional SEN figures to be applied for academies have been calculated 5/12th / 7/12th as are across two financial years.

| | | | | Number of Schools < £0 | | | | 39 | | | |
|--|--|--|--|--|--|---------------------------------------|-----------------------------------|-------------------------------------|---|---|---|
| | | | | Contingency Cost (total of schools over >£500) | | | | £471,868 | | | |
| | | | | | | | | 95% | | | |
| School Name | Cambridgeshire Notional SEN Budget 2021/22 | Cambridgeshire Notional SEN Budget 2022/23 | Cambridgeshire Notional SEN Budget 2022/23 - Academies - Academic Year - 5/12th / 7/12th | October 2022 Census R-11 | Number of EHCPs (Excluding High Needs Units / Enhanced Resource Bases) | EHCPs as % of Roll (highlighted > 4%) | EHCPs as % of Roll 4% or Greater? | Potential Illustrative cost of £6ks | Illustrative Difference to Cambridgeshire Notional SEN (highlighted less than £0) | Difference to Cambridgeshire Notional SEN with % Threshold applied (highlighted less than £0) | Contingency Funding (if total >£500) and EHCPs as % of Roll >4% |
| Crosshall Junior School | £124,333 | £125,382 | £124,945 | 438.0 | 15.0 | 3.4% | No | £90,000 | £34,945 | £28,698 | £0 |
| Ditton Lodge Primary School | £45,594 | £45,181 | £45,353 | 194.0 | 7.0 | 3.6% | No | £42,000 | £3,353 | £1,085 | £0 |
| Downham Feoffees Primary Academy | £41,582 | £41,532 | £41,553 | 162.0 | 3.0 | 1.9% | No | £18,000 | £23,553 | £21,476 | £0 |
| Dry Drayton CoE (C) Primary School | £17,264 | £16,737 | £0 | 64.0 | 1.0 | 1.6% | No | £6,000 | £10,737 | £9,900 | £0 |
| Duxford Church of England Community Primary School | £55,726 | £53,518 | £0 | 181.0 | 4.0 | 2.2% | No | £24,000 | £29,518 | £26,842 | £0 |
| Earith Primary School | £26,286 | £25,109 | £25,599 | 96.0 | 4.0 | 4.2% | Yes | £24,000 | £1,599 | £319 | £0 |
| Eastfield Infant and Nursery School | £38,690 | £44,054 | £0 | 163.0 | 5.0 | 3.1% | No | £30,000 | £14,054 | £11,851 | £0 |
| Elm CoE Primary School | £90,643 | £94,904 | £93,128 | 206.0 | 7.0 | 3.4% | No | £42,000 | £51,128 | £46,472 | £0 |
| Elm Road Primary School | £96,384 | £100,138 | £98,574 | 204.0 | 3.0 | 1.5% | No | £18,000 | £80,574 | £75,645 | £0 |
| Elsworth CoE VA Primary School | £29,284 | £28,613 | £0 | 124.0 | 3.0 | 2.4% | No | £18,000 | £10,613 | £9,182 | £0 |
| Ely College | £446,114 | £482,352 | £467,253 | 1,325.0 | 31.0 | 2.3% | No | £186,000 | £281,253 | £257,890 | £0 |
| Ely St John's Community Primary School | £111,073 | £107,708 | £0 | 371.0 | 10.0 | 2.7% | No | £60,000 | £47,708 | £42,323 | £0 |
| Ely St Mary's CoE Junior School | £123,957 | £102,878 | £111,661 | 282.0 | 13.0 | 4.6% | Yes | £78,000 | £33,661 | £28,078 | £0 |
| Ermine Street Church Academy | £54,042 | £70,699 | £63,759 | 241.0 | 10.0 | 4.1% | Yes | £60,000 | £3,759 | £571 | £0 |
| Ernulf Academy | £306,908 | £332,957 | £322,103 | 707.0 | 24.0 | 3.4% | No | £144,000 | £178,103 | £161,998 | £0 |
| Eynesbury CoE C Primary School | £43,448 | £47,478 | £0 | 198.0 | 7.0 | 3.5% | No | £42,000 | £5,478 | £3,104 | £0 |
| Farcet CoE (C) Primary School | £47,494 | £42,513 | £44,589 | 110.0 | 6.0 | 5.5% | Yes | £36,000 | £8,589 | £6,359 | £0 |
| Fawcett Primary School | £109,020 | £111,551 | £0 | 375.0 | 5.0 | 1.3% | No | £30,000 | £81,551 | £75,974 | £0 |
| Fen Ditton Primary School | £70,977 | £67,861 | £69,159 | 150.0 | 8.0 | 5.3% | Yes | £48,000 | £21,159 | £17,701 | £0 |
| Fen Drayton Primary School | £24,250 | £24,761 | £0 | 110.0 | 4.0 | 3.6% | No | £24,000 | £761 | £-477 | £0 |
| Fenstanton and Hilton Primary School | £59,857 | £64,493 | £0 | 207.0 | 7.0 | 3.4% | No | £42,000 | £22,493 | £19,268 | £0 |
| Folksworth CoE Primary School | £24,550 | £22,374 | £0 | 95.0 | 1.0 | 1.1% | No | £6,000 | £16,374 | £15,255 | £0 |
| Fordham CoE Primary School | £84,259 | £89,462 | £0 | 413.0 | 10.0 | 2.4% | No | £60,000 | £29,462 | £24,989 | £0 |
| Fourfields Community Primary School | £155,241 | £161,610 | £0 | 446.0 | 23.0 | 5.2% | Yes | £138,000 | £23,610 | £15,529 | £0 |
| Fowlmere Primary School | £20,872 | £22,806 | £0 | 89.0 | 0.0 | 0.0% | No | £0 | £22,806 | £21,665 | £0 |
| Foxton Primary School | £22,485 | £26,086 | £0 | 89.0 | 3.0 | 3.4% | No | £18,000 | £8,086 | £6,782 | £0 |
| Friday Bridge Community Primary School | £46,715 | £47,232 | £0 | 86.0 | 1.0 | 1.2% | No | £6,000 | £41,232 | £38,870 | £0 |
| Fulbourn Primary School | £65,952 | £63,588 | £0 | 287.0 | 7.0 | 2.4% | No | £42,000 | £21,588 | £18,408 | £0 |
| Gamlingay Village Primary | £81,527 | £96,190 | £90,080 | 388.0 | 6.0 | 1.5% | No | £36,000 | £54,080 | £49,576 | £0 |
| Girton Glebe Primary School | £42,546 | £45,732 | £44,405 | 177.0 | 8.0 | 4.5% | Yes | £48,000 | £-3,595 | £-5,816 | £5,816 |
| Glebelands Primary Academy | £135,164 | £141,004 | £138,570 | 394.0 | 10.0 | 2.5% | No | £60,000 | £78,570 | £71,642 | £0 |
| Godmanchester Bridge Academy | £54,393 | £52,787 | £53,456 | 210.0 | 11.0 | 5.2% | Yes | £66,000 | £-12,544 | £-15,217 | £15,217 |
| Godmanchester Community Academy | £95,988 | £101,599 | £99,261 | 392.0 | 10.0 | 2.6% | No | £60,000 | £39,261 | £34,298 | £0 |
| Gorefield Primary School | £32,434 | £35,639 | £34,304 | 103.0 | 5.0 | 4.9% | Yes | £30,000 | £4,304 | £2,589 | £0 |
| Great Abington Primary School | £31,887 | £36,192 | £0 | 135.0 | 3.0 | 2.2% | No | £18,000 | £18,192 | £16,382 | £0 |
| Great and Little Shelford CoE (Aided) Primary School | £49,672 | £52,360 | £0 | 208.0 | 6.0 | 2.9% | No | £36,000 | £16,360 | £13,742 | £0 |
| Great Gidding CoE Primary School | £10,529 | £15,056 | £0 | 47.0 | 0.0 | 0.0% | No | £0 | £15,056 | £14,303 | £0 |
| Great Paxton CoE Primary School | £27,183 | £26,481 | £0 | 107.0 | 1.0 | 0.9% | No | £6,000 | £20,481 | £19,157 | £0 |
| Great Staughton Primary School | £16,052 | £15,751 | £15,876 | 80.0 | 1.0 | 1.3% | No | £6,000 | £9,876 | £9,082 | £0 |
| Great Wilbraham CoE Primary School | £22,667 | £21,179 | £0 | 86.0 | 1.0 | 1.2% | No | £6,000 | £15,179 | £14,120 | £0 |
| Gulden Morden CoE Primary Academy | £13,858 | £13,415 | £13,600 | 52.0 | 3.0 | 5.8% | Yes | £18,000 | £-4,400 | £-5,080 | £5,080 |
| Guyhirn CoE VC Primary School | £28,790 | £32,487 | £30,947 | 74.0 | 3.0 | 4.1% | Yes | £18,000 | £12,947 | £11,399 | £0 |
| Hardwick and Cambourne Community Primary School | £121,224 | £116,516 | £0 | 464.0 | 15.0 | 3.2% | No | £90,000 | £26,516 | £20,690 | £0 |
| Harston and Newton Community Primary School | £34,056 | £30,892 | £0 | 121.0 | 5.0 | 4.1% | Yes | £30,000 | £892 | £-653 | £653 |
| Hartford Infant School | £67,778 | £66,605 | £67,094 | 172.0 | 7.0 | 4.1% | Yes | £42,000 | £25,094 | £21,739 | £0 |
| Hartford Junior School | £95,383 | £96,130 | £95,819 | 227.0 | 17.0 | 7.5% | Yes | £102,000 | £-6,181 | £-10,972 | £10,972 |
| Haslingfield Endowed Primary School | £35,126 | £34,342 | £0 | 144.0 | 4.0 | 2.8% | No | £24,000 | £10,342 | £8,625 | £0 |
| Hatton Park Primary School | £84,357 | £91,025 | £88,247 | 392.0 | 10.0 | 2.6% | No | £60,000 | £28,247 | £23,834 | £0 |
| Hauxton Primary School | £23,105 | £22,462 | £0 | 97.0 | 5.0 | 5.2% | Yes | £30,000 | £-7,538 | £-8,661 | £8,661 |

Appendix 3 - High Needs Block Contingency

Calculations below are for the financial year April to March and as such the Notional SEN figures to be applied for academies have been calculated 5/12th / 7/12th as are across two financial years.

| | | | | Number of Schools < £0 | | 39 | | | | | |
|--|--|--|---|--|--|--|---|--|--|--|---|
| | | | | Contingency Cost (total of schools over >£500) | | £471,868 | | | | | |
| | | | | | | 95% | | | | | |
| School Name | Cambridgeshire Notional SEN Budget 2021/22 | Cambridgeshire Notional SEN Budget 2022/23 | Cambridgeshire Notional SEN Budget 2022/23 - Academies - Academic Year - 5/12th / 7/12th | October 2022 Census R-11 | Number of EHCPs (Excluding High Needs Units / Enhanced Resource Bases) | EHCPs as % of Roll (highlighted > 4%) | EHCPs as % of Roll 4% or Greater? | Potential Illustrative cost of £6ks | Illustrative Difference to Cambridgeshire Notional SEN (highlighted less than £0) | Difference to Cambridgeshire Notional SEN with % Threshold applied (highlighted less than £0) | Contingency Funding (if total >£500) and EHCPs as % of Roll >4% |
| Hemingford Grey Primary School | £77,155 | £73,467 | £0 | 280.0 | 6.0 | 2.1% | No | £36,000 | £37,467 | £33,794 | £0 |
| Hinchingbrooke School | £577,497 | £624,247 | £604,768 | 1,595.0 | 70.0 | 4.4% | Yes | £420,000 | £184,768 | £154,530 | £0 |
| Histon and Impington Infant School | £73,841 | £86,117 | £81,002 | 323.0 | 8.0 | 2.5% | No | £48,000 | £33,002 | £28,952 | £0 |
| Histon and Impington Junior School | £107,735 | £115,272 | £112,132 | 457.0 | 7.0 | 1.5% | No | £42,000 | £70,132 | £64,525 | £0 |
| Holme CofE Primary School | £27,851 | £27,909 | £27,885 | 118.0 | 1.0 | 0.8% | No | £6,000 | £21,885 | £20,491 | £0 |
| Holywell CofE Primary School | £40,546 | £44,951 | £0 | 205.0 | 3.0 | 1.5% | No | £18,000 | £26,951 | £24,704 | £0 |
| Houghton Primary School | £47,483 | £50,471 | £0 | 177.0 | 12.0 | 6.8% | Yes | £72,000 | £-21,529 | £-224,053 | £24,053 |
| Huntingdon Primary School | £193,441 | £183,562 | £0 | 382.0 | 23.0 | 6.0% | Yes | £138,000 | £45,562 | £36,384 | £0 |
| Impington Village College | £416,468 | £430,008 | £424,366 | 1,186.0 | 38.0 | 3.2% | No | £228,000 | £196,366 | £175,148 | £0 |
| Isle of Ely Primary School | £95,890 | £105,859 | £101,705 | 397.0 | 10.0 | 2.5% | No | £60,000 | £41,705 | £36,620 | £0 |
| Isleham Church of England Primary School | £51,728 | £53,579 | £0 | 208.0 | 6.0 | 2.9% | No | £36,000 | £17,579 | £14,900 | £0 |
| Jeavons Wood Primary School | £106,871 | £104,666 | £105,585 | 419.0 | 11.0 | 2.6% | No | £66,000 | £39,585 | £34,306 | £0 |
| Kennett Primary School | £21,664 | £21,673 | £21,670 | 95.0 | 3.0 | 3.2% | No | £18,000 | £3,670 | £2,586 | £0 |
| Kettlefields Primary School | £30,311 | £28,217 | £0 | 110.0 | 2.0 | 1.8% | No | £12,000 | £16,217 | £14,806 | £0 |
| Kimbolton Primary Academy | £14,085 | £14,562 | £14,363 | 67.0 | 1.0 | 1.5% | No | £6,000 | £8,363 | £7,645 | £0 |
| Kinderley Primary School | £31,074 | £29,446 | £0 | 76.0 | 3.0 | 3.9% | No | £18,000 | £11,446 | £9,974 | £0 |
| Kings Hedges Primary School | £180,651 | £183,557 | £0 | 391.0 | 9.0 | 2.3% | No | £54,000 | £129,557 | £120,379 | £0 |
| Kingsfield Primary School | £146,269 | £146,634 | £146,482 | 348.0 | 18.0 | 5.2% | Yes | £108,000 | £38,482 | £31,158 | £0 |
| Lantern Community Primary School | £105,558 | £104,698 | £105,056 | 396.0 | 12.0 | 3.0% | No | £72,000 | £33,056 | £27,804 | £0 |
| Leverington Primary Academy | £81,482 | £83,046 | £82,394 | 203.0 | 8.0 | 3.9% | No | £48,000 | £34,394 | £30,275 | £0 |
| Linton CofE Infant School | £41,634 | £44,461 | £0 | 158.0 | 3.0 | 1.9% | No | £18,000 | £26,461 | £24,238 | £0 |
| Linton Heights Junior School | £68,627 | £61,741 | £64,610 | 234.0 | 7.0 | 3.0% | No | £42,000 | £22,610 | £19,380 | £0 |
| Linton Village College | £289,902 | £297,502 | £294,335 | 826.0 | 23.0 | 2.8% | No | £138,000 | £156,335 | £141,618 | £0 |
| Lionel Walden Primary School | £53,511 | £53,059 | £0 | 206.0 | 5.0 | 2.4% | No | £30,000 | £23,059 | £20,406 | £0 |
| Little Paxton Primary School | £96,465 | £94,464 | £0 | 324.0 | 10.0 | 3.1% | No | £60,000 | £34,464 | £29,741 | £0 |
| Little Thetford CofE VC Primary School | £20,345 | £21,590 | £0 | 92.0 | 6.0 | 6.5% | Yes | £36,000 | £-14,410 | £-15,490 | £15,490 |
| Littleport & East Cambs Academy | £210,716 | £240,130 | £227,874 | 548.0 | 32.0 | 5.8% | Yes | £192,000 | £35,874 | £24,481 | £0 |
| Littleport Community Primary School | £106,537 | £104,790 | £0 | 408.0 | 10.0 | 2.5% | No | £60,000 | £44,790 | £39,550 | £0 |
| Longsands Academy | £557,570 | £574,962 | £567,716 | 1,412.0 | 29.0 | 2.1% | No | £174,000 | £393,716 | £365,330 | £0 |
| Manea Community Primary School | £88,075 | £94,115 | £0 | 242.0 | 13.0 | 5.4% | Yes | £78,000 | £16,115 | £11,409 | £0 |
| Marleigh Primary Academy | £0 | £10,871 | £10,871 | 35.0 | 1.0 | 2.9% | No | £6,000 | £4,871 | £4,327 | £0 |
| Mayfield Primary School | £118,394 | £120,636 | £0 | 409.0 | 18.0 | 4.4% | Yes | £108,000 | £12,636 | £6,605 | £0 |
| Meadow Primary School | £42,531 | £49,434 | £46,557 | 212.0 | 4.0 | 1.9% | No | £24,000 | £22,557 | £20,230 | £0 |
| Melbourn Primary School | £96,585 | £108,115 | £0 | 398.0 | 15.0 | 3.8% | No | £90,000 | £18,115 | £12,709 | £0 |
| Melbourn Village College | £237,578 | £236,752 | £237,096 | 627.0 | 35.0 | 5.6% | Yes | £210,000 | £27,096 | £15,242 | £0 |
| Meldreth Primary School | £50,801 | £54,983 | £0 | 206.0 | 9.0 | 4.4% | Yes | £54,000 | £983 | £-1,766 | £1,766 |
| Mepal and Witcham Church of England Primary School | £26,444 | £26,154 | £26,274 | 94.0 | 5.0 | 5.3% | Yes | £30,000 | £-3,726 | £-5,039 | £5,039 |
| Meridian Primary School | £47,570 | £51,324 | £0 | 205.0 | 2.0 | 1.0% | No | £12,000 | £39,324 | £36,758 | £0 |
| Middlefield Primary Academy | £50,227 | £52,661 | £51,647 | 204.0 | 3.0 | 1.5% | No | £18,000 | £33,647 | £31,065 | £0 |
| Millfield Primary School | £88,857 | £96,453 | £93,288 | 348.0 | 5.0 | 1.4% | No | £30,000 | £63,288 | £58,624 | £0 |
| Milton Church of England Primary School | £87,580 | £79,660 | £82,960 | 339.0 | 13.0 | 3.8% | No | £78,000 | £4,960 | £812 | £0 |
| Milton Road Primary School | £113,213 | £116,177 | £0 | 421.0 | 6.0 | 1.4% | No | £36,000 | £80,177 | £74,368 | £0 |
| Monkfield Park Primary School | £95,192 | £101,026 | £0 | 415.0 | 10.0 | 2.4% | No | £60,000 | £41,026 | £35,975 | £0 |
| Morley Memorial Primary School | £110,310 | £107,765 | £0 | 396.0 | 9.0 | 2.3% | No | £54,000 | £53,765 | £48,377 | £0 |
| Murrow Primary Academy | £53,948 | £44,821 | £48,624 | 100.0 | 2.0 | 2.0% | No | £12,000 | £36,624 | £34,192 | £0 |
| Neale-Wade Academy | £686,716 | £750,806 | £724,102 | 1,239.0 | 34.0 | 2.7% | No | £204,000 | £520,102 | £483,897 | £0 |
| New Road Primary School | £68,640 | £78,363 | £74,312 | 188.0 | 13.0 | 6.9% | Yes | £78,000 | £-3,688 | £-7,404 | £7,404 |
| Newnham Croft Primary School | £51,104 | £54,609 | £0 | 235.0 | 2.0 | 0.9% | No | £12,000 | £42,609 | £39,879 | £0 |
| North Cambridge Academy | £316,943 | £375,496 | £351,099 | 691.0 | 22.0 | 3.2% | No | £132,000 | £219,099 | £201,544 | £0 |

Appendix 3 - High Needs Block Contingency

Calculations below are for the financial year April to March and as such the Notional SEN figures to be applied for academies have been calculated 5/12th / 7/12th as are across two financial years.

| | | | | Number of Schools < £0 | | Contingency Cost (total of schools over >£500) | | | | | |
|---|--|--|--|--------------------------|--|--|-----------------------------------|-------------------------------------|---|---|---|
| | | | | | | | | 39 | | | |
| | | | | | | | | £471,868 | | | |
| | | | | | | | | 95% | | | |
| School Name | Cambridgeshire Notional SEN Budget 2021/22 | Cambridgeshire Notional SEN Budget 2022/23 | Cambridgeshire Notional SEN Budget 2022/23 - Academies - Academic Year - 5/12th / 7/12th | October 2022 Census R-11 | Number of EHCPs (Excluding High Needs Units / Enhanced Resource Bases) | EHCPs as % of Roll (highlighted > 4%) | EHCPs as % of Roll 4% or Greater? | Potential Illustrative cost of £6ks | Illustrative Difference to Cambridgeshire Notional SEN (highlighted less than £0) | Difference to Cambridgeshire Notional SEN with % Threshold applied (highlighted less than £0) | Contingency Funding (if total >£500) and EHCPs as % of Roll >4% |
| Northstowe Secondary School | £98,488 | £149,354 | £128,160 | 468.0 | 18.0 | 3.8% | No | £108,000 | £20,160 | £13,752 | £0 |
| Oakington CoFe VA Primary School | £31,731 | £33,404 | £32,707 | 109.0 | 4.0 | 3.7% | No | £24,000 | £8,707 | £7,071 | £0 |
| Offord Primary School | £25,708 | £24,466 | £24,983 | 80.0 | 3.0 | 3.8% | No | £18,000 | £6,983 | £5,734 | £0 |
| Orchard Park Community Primary School | £72,112 | £73,280 | £0 | 150.0 | 8.0 | 5.3% | Yes | £48,000 | £25,280 | £21,616 | £0 |
| Orchards Church of England Primary School | £225,901 | £225,381 | £225,598 | 372.0 | 21.0 | 5.6% | Yes | £126,000 | £99,598 | £88,318 | £0 |
| Over Primary School | £55,687 | £54,044 | £0 | 210.0 | 6.0 | 2.9% | No | £36,000 | £18,044 | £15,342 | £0 |
| Park Lane Primary & Nursery School | £115,958 | £120,614 | £118,674 | 412.0 | 20.0 | 4.9% | Yes | £120,000 | £-1,326 | £-7,260 | £7,260 |
| Park Street CoFe Primary School | £23,742 | £31,379 | £0 | 118.0 | 3.0 | 2.5% | No | £18,000 | £13,379 | £11,810 | £0 |
| Parkside Community College | £216,736 | £234,431 | £227,058 | 635.0 | 13.0 | 2.0% | No | £78,000 | £149,058 | £137,705 | £0 |
| Pathfinder Primary School | £74,326 | £100,837 | £89,791 | 344.0 | 5.0 | 1.5% | No | £30,000 | £59,791 | £55,301 | £0 |
| Peckover Primary School | £182,829 | £189,474 | £186,705 | 406.0 | 15.0 | 3.7% | No | £90,000 | £96,705 | £87,370 | £0 |
| Pendragon Community Primary School | £90,183 | £90,291 | £0 | 363.0 | 11.0 | 3.0% | No | £66,000 | £24,291 | £19,776 | £0 |
| Petersfield CoFe Aided Primary School | £27,596 | £30,480 | £0 | 129.0 | 1.0 | 0.8% | No | £6,000 | £24,480 | £22,956 | £0 |
| Priory Junior School | £94,874 | £99,235 | £0 | 327.0 | 14.0 | 4.3% | Yes | £84,000 | £15,235 | £10,273 | £0 |
| Priory Park Infant School & Playgroup | £73,624 | £80,464 | £0 | 240.0 | 8.0 | 3.3% | No | £48,000 | £32,464 | £28,441 | £0 |
| Queen Edith Primary School | £116,924 | £121,326 | £0 | 399.0 | 11.0 | 2.8% | No | £66,000 | £55,326 | £49,260 | £0 |
| Queen Emma Primary School | £107,744 | £106,238 | £0 | 406.0 | 11.0 | 2.7% | No | £66,000 | £40,238 | £34,926 | £0 |
| Ramoth Junior School | £147,097 | £169,834 | £160,360 | 321.0 | 18.0 | 5.6% | Yes | £108,000 | £52,360 | £44,342 | £0 |
| Ramsey Junior School | £88,379 | £90,230 | £89,459 | 261.0 | 12.0 | 4.6% | Yes | £72,000 | £17,459 | £12,986 | £0 |
| Ramsey Spinning Infant School | £75,106 | £67,557 | £70,702 | 195.0 | 5.0 | 2.6% | No | £30,000 | £40,702 | £37,167 | £0 |
| Ridgefield Primary School | £65,227 | £69,020 | £0 | 208.0 | 13.0 | 6.3% | Yes | £78,000 | £-8,980 | £-12,431 | £12,431 |
| Robert Arkenstall Primary School | £69,407 | £65,986 | £0 | 284.0 | 5.0 | 1.8% | No | £30,000 | £35,986 | £32,687 | £0 |
| Sawston Village College | £360,408 | £379,711 | £371,668 | 1,165.0 | 25.0 | 2.1% | No | £150,000 | £221,668 | £203,085 | £0 |
| Sawtry Infants' School | £41,337 | £47,436 | £0 | 183.0 | 11.0 | 6.0% | Yes | £66,000 | £-18,564 | £-20,936 | £20,936 |
| Sawtry Junior Academy | £65,994 | £63,929 | £64,790 | 268.0 | 7.0 | 2.6% | No | £42,000 | £22,790 | £19,550 | £0 |
| Sawtry Village Academy | £286,256 | £299,481 | £293,971 | 785.0 | 22.0 | 2.8% | No | £132,000 | £161,971 | £147,272 | £0 |
| Shirley Community Primary School | £173,754 | £173,973 | £0 | 371.0 | 16.0 | 4.3% | Yes | £96,000 | £77,973 | £69,274 | £0 |
| Sir Harry Smith Community College | £431,845 | £456,565 | £446,265 | 967.0 | 12.0 | 1.2% | No | £72,000 | £374,265 | £351,951 | £0 |
| Soham Village College | £498,940 | £517,268 | £509,631 | 1,401.0 | 48.0 | 3.4% | No | £288,000 | £221,631 | £196,150 | £0 |
| Somersham Primary School | £68,686 | £74,332 | £71,979 | 276.0 | 17.0 | 6.2% | Yes | £102,000 | £-30,021 | £-33,620 | £33,620 |
| Spaldwick Community Primary School | £23,964 | £21,878 | £0 | 87.0 | 8.0 | 9.2% | Yes | £48,000 | £-26,122 | £-27,216 | £27,216 |
| Spring Meadow Infant School | £64,080 | £56,838 | £0 | 143.0 | 13.0 | 9.1% | Yes | £78,000 | £-21,162 | £-24,004 | £24,004 |
| St Alban's Catholic Primary School | £57,667 | £55,482 | £0 | 208.0 | 4.0 | 1.9% | No | £24,000 | £31,482 | £28,708 | £0 |
| St Andrew's CoFe Primary School | £110,060 | £109,865 | £109,946 | 416.0 | 16.0 | 3.8% | No | £96,000 | £13,946 | £8,449 | £0 |
| St Anne's CoFe Primary School | £55,454 | £56,627 | £0 | 204.0 | 5.0 | 2.5% | No | £30,000 | £26,627 | £23,796 | £0 |
| St Bede's Inter-Church School | £311,919 | £318,711 | £315,881 | 918.0 | 54.0 | 5.9% | Yes | £324,000 | £-8,119 | £-23,913 | £23,913 |
| St Helen's Primary School | £40,551 | £43,594 | £0 | 182.0 | 4.0 | 2.2% | No | £24,000 | £19,594 | £17,414 | £0 |
| St Ivo School | £528,375 | £538,334 | £534,184 | 1,402.0 | 20.0 | 1.4% | No | £120,000 | £414,184 | £387,475 | £0 |
| St John's CoFe Primary School | £157,955 | £155,263 | £156,385 | 365.0 | 17.0 | 4.7% | Yes | £102,000 | £54,385 | £46,566 | £0 |
| St Laurence's Catholic Primary School | £106,585 | £103,302 | £104,670 | 271.0 | 6.0 | 2.2% | No | £36,000 | £68,670 | £63,437 | £0 |
| St Luke's CoFe Primary School | £42,511 | £42,494 | £42,501 | 103.0 | 6.0 | 5.8% | Yes | £36,000 | £6,501 | £4,376 | £0 |
| St Mary's Church of England Primary School St Neots | £44,540 | £43,356 | £43,850 | 95.0 | 8.0 | 8.4% | Yes | £48,000 | £-4,150 | £-6,343 | £6,343 |
| St Matthew's Primary School | £147,961 | £152,674 | £0 | 628.0 | 17.0 | 2.7% | No | £102,000 | £50,674 | £43,040 | £0 |
| St Pauls CoFe VA Primary School | £42,550 | £40,494 | £0 | 165.0 | 1.0 | 0.6% | No | £6,000 | £34,494 | £32,469 | £0 |
| St Peter's CoFe Aided Junior School | £117,133 | £122,243 | £120,114 | 225.0 | 10.0 | 4.4% | Yes | £60,000 | £60,114 | £54,108 | £0 |
| St Peter's School | £582,334 | £622,634 | £605,843 | 1,201.0 | 42.0 | 3.5% | No | £252,000 | £353,843 | £323,550 | £0 |
| St Philip's CoFe Aided Primary School | £91,187 | £85,550 | £0 | 260.0 | 3.0 | 1.2% | No | £18,000 | £67,550 | £63,272 | £0 |
| Stapleford Community Primary School | £44,083 | £45,874 | £45,128 | 191.0 | 4.0 | 2.1% | No | £24,000 | £21,128 | £18,872 | £0 |
| Steeple Morden CoFe VC Primary School | £48,805 | £48,065 | £0 | 174.0 | 2.0 | 1.1% | No | £12,000 | £36,065 | £33,662 | £0 |

Appendix 3 - High Needs Block Contingency

Calculations below are for the financial year April to March and as such the Notional SEN figures to be applied for academies have been calculated 5/12th / 7/12th as are across two financial years.

| | | | | Number of Schools < £0 | | 39 | | | | | |
|---|--|--|--|--|--|---------------------------------------|-----------------------------------|-------------------------------------|---|---|---|
| | | | | Contingency Cost (total of schools over >£500) | | £471,868 | | | | | |
| | | | | | | 95% | | | | | |
| School Name | Cambridgeshire Notional SEN Budget 2021/22 | Cambridgeshire Notional SEN Budget 2022/23 | Cambridgeshire Notional SEN Budget 2022/23 - Academies - Academic Year - 5/12th / 7/12th | October 2022 Census R-11 | Number of EHCPs (Excluding High Needs Units / Enhanced Resource Bases) | EHCPs as % of Roll (highlighted > 4%) | EHCPs as % of Roll 4% or Greater? | Potential Illustrative cost of £6ks | Illustrative Difference to Cambridgeshire Notional SEN (highlighted less than £0) | Difference to Cambridgeshire Notional SEN with % Threshold applied (highlighted less than £0) | Contingency Funding (if total >£500) and EHCPs as % of Roll >4% |
| Stilton Church of England Primary Academy | £43,353 | £38,174 | £40,332 | 155.0 | 7.0 | 4.5% | Yes | £42,000 | £-1,668 | £-3,685 | £3,685 |
| Stretham Community Primary School | £44,623 | £50,373 | £0 | 178.0 | 4.0 | 2.2% | No | £24,000 | £26,373 | £23,854 | £0 |
| Stukeley Meadows Primary School | £106,900 | £108,433 | £0 | 402.0 | 16.0 | 4.0% | No | £96,000 | £12,433 | £7,011 | £0 |
| Sutton CofE VC Primary School | £78,561 | £87,454 | £0 | 254.0 | 11.0 | 4.3% | Yes | £66,000 | £21,454 | £17,081 | £0 |
| Swaffham Bulbeck Church of England Primary School | £24,416 | £26,073 | £25,383 | 90.0 | 6.0 | 6.7% | Yes | £36,000 | £-10,617 | £-11,886 | £11,886 |
| Swaffham Prior Church of England Academy | £30,080 | £30,476 | £30,311 | 100.0 | 5.0 | 5.0% | Yes | £30,000 | £311 | £-1,205 | £1,205 |
| Swavesey Primary School | £73,028 | £81,234 | £0 | 302.0 | 10.0 | 3.3% | No | £60,000 | £21,234 | £17,172 | £0 |
| Swavesey Village College | £440,152 | £440,417 | £440,306 | 1,233.0 | 29.0 | 2.4% | No | £174,000 | £266,306 | £244,291 | £0 |
| Teversham CofE VA Primary School | £62,306 | £65,859 | £0 | 182.0 | 7.0 | 3.8% | No | £42,000 | £23,859 | £20,566 | £0 |
| The Ashbeach Primary School | £33,953 | £37,425 | £0 | 123.0 | 8.0 | 6.5% | Yes | £48,000 | £-10,575 | £-12,447 | £12,447 |
| The Bellbird Primary School | £98,900 | £102,792 | £0 | 419.0 | 10.0 | 2.4% | No | £60,000 | £42,792 | £37,652 | £0 |
| The Elton CofE Primary School of the Foundation of Frances and Jane Proby | £37,075 | £38,287 | £0 | 139.0 | 2.0 | 1.4% | No | £12,000 | £26,287 | £24,373 | £0 |
| The Galfrid Academy | £171,477 | £161,879 | £165,878 | 292.0 | 24.0 | 8.2% | Yes | £144,000 | £21,878 | £13,584 | £0 |
| The Grove Primary School | £98,945 | £101,807 | £0 | 224.0 | 13.0 | 5.8% | Yes | £78,000 | £23,807 | £18,716 | £0 |
| The Icknield Primary School | £49,319 | £51,560 | £50,626 | 203.0 | 6.0 | 3.0% | No | £36,000 | £14,626 | £12,095 | £0 |
| The Nene Infant & Nursery School | £117,566 | £102,223 | £108,616 | 246.0 | 10.0 | 4.1% | Yes | £60,000 | £48,616 | £43,185 | £0 |
| The Netherhall School | £347,864 | £379,986 | £366,602 | 930.0 | 15.0 | 1.6% | No | £90,000 | £276,602 | £258,272 | £0 |
| The Newton Community Primary School | £17,309 | £14,132 | £0 | 57.0 | 2.0 | 3.5% | No | £12,000 | £2,132 | £1,425 | £0 |
| The Rackham Church of England Primary School | £68,020 | £74,010 | £0 | 294.0 | 13.0 | 4.4% | Yes | £78,000 | £-3,990 | £-7,691 | £7,691 |
| The Round House Primary Academy | £107,724 | £106,847 | £107,212 | 385.0 | 16.0 | 4.2% | Yes | £96,000 | £11,212 | £5,852 | £0 |
| The Shade Primary School | £54,396 | £55,773 | £55,199 | 204.0 | 8.0 | 3.9% | No | £48,000 | £7,199 | £4,439 | £0 |
| The Spinney Primary School | £53,717 | £53,787 | £0 | 209.0 | 4.0 | 1.9% | No | £24,000 | £29,787 | £27,098 | £0 |
| The Vine Inter-Church Primary School | £100,441 | £100,796 | £0 | 405.0 | 6.0 | 1.5% | No | £36,000 | £64,796 | £59,756 | £0 |
| The Weatheralls Primary School | £143,931 | £128,690 | £135,040 | 428.0 | 27.0 | 6.3% | Yes | £162,000 | £-26,960 | £-33,712 | £33,712 |
| Thomas Clarkson Academy | £845,091 | £913,826 | £885,186 | 1,284.0 | 30.0 | 2.3% | No | £180,000 | £705,186 | £660,927 | £0 |
| Thomas Eaton Primary Academy | £43,189 | £49,970 | £47,145 | 118.0 | 9.0 | 7.6% | Yes | £54,000 | £-6,855 | £-9,213 | £9,213 |
| Thongsley Fields Primary and Nursery School | £122,509 | £125,506 | £124,257 | 238.0 | 7.0 | 2.9% | No | £42,000 | £82,257 | £76,044 | £0 |
| Thorndown Primary School | £140,073 | £144,089 | | 521.0 | 18.0 | 3.5% | No | £108,000 | £36,089 | £28,885 | £0 |
| Thriplow CofE VA Primary School | £34,694 | £27,699 | £30,614 | 110.0 | 0.0 | 0.0% | No | £0 | £30,614 | £29,083 | £0 |
| Townley Primary School | £35,422 | £37,224 | £0 | 87.0 | 10.0 | 11.5% | Yes | £60,000 | £-22,776 | £-24,637 | £24,637 |
| Trumpington Community College | £160,585 | £175,979 | £169,565 | 449.0 | 13.0 | 2.9% | No | £78,000 | £91,565 | £83,087 | £0 |
| Trumpington Meadows Primary School | £85,535 | £78,723 | £0 | 267.0 | 7.0 | 2.6% | No | £42,000 | £36,723 | £32,787 | £0 |
| Trumpington Park Primary School | £83,512 | £103,468 | £95,153 | 382.0 | 11.0 | 2.9% | No | £66,000 | £29,153 | £24,395 | £0 |
| University of Cambridge Primary School | £131,002 | £150,871 | £142,592 | 622.0 | 23.0 | 3.7% | No | £138,000 | £4,592 | £-2,537 | £0 |
| Upwood Primary Academy | £52,281 | £58,446 | £55,877 | 190.0 | 7.0 | 3.7% | No | £42,000 | £13,877 | £11,083 | £0 |
| Warboys Community Primary School | £98,852 | £121,579 | £112,110 | 333.0 | 6.0 | 1.8% | No | £36,000 | £76,110 | £70,504 | £0 |
| Waterbeach Community Primary School | £109,755 | £120,433 | £0 | 477.0 | 7.0 | 1.5% | No | £42,000 | £78,433 | £72,412 | £0 |
| Westfield Junior School | £83,447 | £74,481 | £0 | 270.0 | 13.0 | 4.8% | Yes | £78,000 | £-3,519 | £-7,243 | £7,243 |
| Westwood Primary School | £308,457 | £311,176 | £310,043 | 798.0 | 16.0 | 2.0% | No | £96,000 | £214,043 | £198,541 | £0 |

Appendix 3 - High Needs Block Contingency

Contingency Funding allocated to Schools with EHCPs 4% or greater of School Roll and Exceeding Notional SEN

Calculations below are for the financial year April to March and as such the Notional SEN figures to be applied for academies have been calculated 5/12th / 7/12th as are across two financial years.

| School Name | Cambridgeshire Notional SEN Budget 2021/22 | Cambridgeshire Notional SEN Budget 2022/23 | Cambridgeshire Notional SEN Budget 2022/23 - Academies - Academic Year - 5/12th / 7/12th | October 22 Census | | Number of Schools < £0 Contingency Cost (total of schools over >£500) | | | | | |
|---|--|--|--|--------------------------|--|--|-----------------------------------|-------------------------------------|---|---|---|
| | | | | October 2022 Census R-11 | Number of EHCPs (Excluding High Needs Units / Enhanced Resource Bases) | EHCPs as % of Roll (highlighted > 4%) | EHCPs as % of Roll 4% or Greater? | Potential Illustrative cost of £6ks | Illustrative Difference to Cambridgeshire Notional SEN (highlighted less than £0) | Difference to Cambridgeshire Notional SEN with % Threshold applied (highlighted less than £0) | Contingency Funding (if total >£500) and EHCPs as % of Roll >4% |
| Wheatfields Primary School | £91,547 | £92,887 | £0 | 333.0 | 7.0 | 2.1% | No | £42,000 | £50,887 | £46,243 | £0 |
| Wilburton CofE Primary School | £36,464 | £34,225 | £0 | 118.0 | 6.0 | 5.1% | Yes | £36,000 | -£1,775 | -£3,486 | £3,486 |
| William de Yaxley Church of England Academy | £65,500 | £68,545 | £67,276 | 227.0 | 6.0 | 2.6% | No | £36,000 | £31,276 | £27,912 | £0 |
| William Westley Church of England VC Primary School | £47,946 | £49,745 | £0 | 201.0 | 6.0 | 3.0% | No | £36,000 | £13,745 | £11,257 | £0 |
| Willingham Primary School | £111,150 | £119,844 | £0 | 346.0 | 6.0 | 1.7% | No | £36,000 | £83,844 | £77,852 | £0 |
| Winhills Primary Academy | £85,723 | £82,612 | £83,909 | 213.0 | 6.0 | 2.8% | No | £36,000 | £47,909 | £43,713 | £0 |
| Wintringham Primary Academy | £24,233 | £26,671 | £25,655 | 69.0 | 1.0 | 1.4% | No | £6,000 | £19,655 | £18,373 | £0 |
| Wisbech St Mary CofE Academy | £82,283 | £92,298 | £88,125 | 169.0 | 1.0 | 0.6% | No | £6,000 | £82,125 | £77,719 | £0 |
| Witchford Village College | £274,764 | £270,622 | £272,348 | 680.0 | 16.0 | 2.4% | No | £96,000 | £176,348 | £162,731 | £0 |
| Wyton on the Hill Community Primary School | £47,892 | £53,408 | £0 | 170.0 | 10.0 | 5.9% | Yes | £60,000 | -£6,592 | -£9,262 | £9,262 |
| Yaxley Infant School | £49,052 | £41,504 | £0 | 132.0 | 6.0 | 4.5% | Yes | £36,000 | £5,504 | £3,429 | £0 |

Appendix 4 - October Census Comparison (Primary and Secondary) - Reception to Year 11 - Provisional Census Data

| | | Oct 21 Census R- Y11 | Oct 22 Census R- Y11 | Difference | % Difference | 23/24 Forecast R- Y11 | Difference to Oct 22 | Difference to Oct 22 % |
|------------------------------|----------------------|-------------------------|-------------------------|------------|-----------------|--------------------------|-------------------------|------------------------------|
| Primary | Town/District | | | | | | | |
| Abbots Ripton P | Huntingdonshire | 98.0 | 101.0 | 3.0 | 3.1% | 104.0 | 3.0 | 3.0% |
| Alconbury P | Huntingdonshire | 201.0 | 205.0 | 4.0 | 2.0% | 217.0 | 12.0 | 5.9% |
| Alderman Jacobs P | Fenland | 629.0 | 626.0 | -3.0 | -0.5% | 657.0 | 31.0 | 5.0% |
| All Saints P, March | Fenland | 199.0 | 197.0 | -2.0 | -1.0% | 200.0 | 3.0 | 1.5% |
| Arbury P | Cambridge City | 392.0 | 371.0 | -21.0 | -5.4% | 367.0 | -4.0 | -1.1% |
| Ashbeach P | Huntingdonshire | 118.0 | 123.0 | 5.0 | 4.2% | 118.0 | -5.0 | -4.1% |
| Babraham P | South Cambridgeshire | 93.0 | 88.0 | -5.0 | -5.4% | 97.0 | 9.0 | 10.2% |
| Bar Hill P | South Cambridgeshire | 279.0 | 266.0 | -13.0 | -4.7% | 261.0 | -5.0 | -1.9% |
| Barnabas Oley P | Huntingdonshire | 140.0 | 147.0 | 7.0 | 5.0% | 146.0 | -1.0 | -0.7% |
| Barrington P | South Cambridgeshire | 117.0 | 134.0 | 17.0 | 14.5% | 144.0 | 10.0 | 7.5% |
| Barton P | South Cambridgeshire | 110.0 | 103.0 | -7.0 | -6.4% | 119.0 | 16.0 | 15.5% |
| Bassingbourn P | South Cambridgeshire | 379.0 | 388.0 | 9.0 | 2.4% | 400.0 | 12.0 | 3.1% |
| Beaupre P | Fenland | 193.0 | 186.0 | -7.0 | -3.6% | 197.0 | 11.0 | 5.9% |
| Bellbird P | South Cambridgeshire | 403.0 | 419.0 | 16.0 | 4.0% | 424.0 | 5.0 | 1.2% |
| Benwick P | Fenland | 96.0 | 104.0 | 8.0 | 8.3% | 92.0 | -12.0 | -11.5% |
| Bewick Bridge Primary | Cambridge City | 193.0 | 187.0 | -6.0 | -3.1% | 183.0 | -4.0 | -2.1% |
| Bottisham P | East Cambridgeshire | 283.0 | 281.0 | -2.0 | -0.7% | 278.0 | -3.0 | -1.1% |
| Bourn P | South Cambridgeshire | 206.0 | 206.0 | 0.0 | 0.0% | 201.0 | -5.0 | -2.4% |
| Brampton Pri | Huntingdonshire | 553.0 | 602.0 | 49.0 | 8.9% | 639.0 | 37.0 | 6.1% |
| Brington P | Huntingdonshire | 108.0 | 109.0 | 1.0 | 0.9% | 124.0 | 15.0 | 13.8% |
| Buckden P | Huntingdonshire | 343.0 | 325.0 | -18.0 | -5.2% | 348.0 | 23.0 | 7.1% |
| Burrough Green P | South Cambridgeshire | 93.0 | 87.0 | -6.0 | -6.5% | 85.0 | -2.0 | -2.3% |
| Burrowmoor P | Fenland | 355.0 | 330.0 | -25.0 | -7.0% | 305.0 | -25.0 | -7.6% |
| Burwell P | East Cambridgeshire | 417.0 | 394.0 | -23.0 | -5.5% | 381.0 | -13.0 | -3.3% |
| Bury P | Huntingdonshire | 183.0 | 189.0 | 6.0 | 3.3% | 198.0 | 9.0 | 4.8% |
| Bushmead P | Huntingdonshire | 354.0 | 358.0 | 4.0 | 1.1% | 364.0 | 6.0 | 1.7% |
| Caldecote P | South Cambridgeshire | 183.0 | 194.0 | 11.0 | 6.0% | 201.0 | 7.0 | 3.6% |
| Castle Camps P | South Cambridgeshire | 134.0 | 127.0 | -7.0 | -5.2% | 129.0 | 2.0 | 1.6% |
| Cavalry P | Fenland | 419.0 | 407.0 | -12.0 | -2.9% | 408.0 | 1.0 | 0.2% |
| Cherry Hinton Primary | Cambridge City | 188.0 | 173.0 | -15.0 | -8.0% | 179.0 | 6.0 | 3.5% |
| Chesterton Primary | Cambridge City | 173.0 | 190.0 | 17.0 | 9.8% | 162.0 | -28.0 | -14.7% |
| Cheveley P | East Cambridgeshire | 134.0 | 138.0 | 4.0 | 3.0% | 151.0 | 13.0 | 9.4% |
| Clarkson I | Fenland | 177.0 | 163.0 | -14.0 | -7.9% | 170.0 | 7.0 | 4.3% |
| Coates P | Fenland | 182.0 | 195.0 | 13.0 | 7.1% | 190.0 | -5.0 | -2.6% |
| Colville P | Cambridge City | 206.0 | 214.0 | 8.0 | 3.9% | 196.0 | -18.0 | -8.4% |
| Coton P | South Cambridgeshire | 107.0 | 109.0 | 2.0 | 1.9% | 119.0 | 10.0 | 9.2% |
| Cottenham P | South Cambridgeshire | 484.0 | 482.0 | -2.0 | -0.4% | 467.0 | -15.0 | -3.1% |
| Cromwell Park P | Huntingdonshire | 189.0 | 200.0 | 11.0 | 5.8% | 224.0 | 24.0 | 12.0% |
| Crosshall I | Huntingdonshire | 283.0 | 259.0 | -24.0 | -8.5% | 248.0 | -11.0 | -4.2% |
| Crosshall J | Huntingdonshire | 446.0 | 438.0 | -8.0 | -1.8% | 422.0 | -16.0 | -3.7% |
| Ditton Lodge F | East Cambridgeshire | 191.0 | 194.0 | 3.0 | 1.6% | 189.0 | -5.0 | -2.6% |
| Downham Feoffees P | East Cambridgeshire | 153.0 | 162.0 | 9.0 | 5.9% | 146.0 | -16.0 | -9.9% |
| Dry Drayton P | South Cambridgeshire | 56.0 | 64.0 | 8.0 | 14.3% | 66.0 | 2.0 | 3.1% |
| Duxford P | South Cambridgeshire | 183.0 | 181.0 | -2.0 | -1.1% | 160.0 | -21.0 | -11.6% |
| Earith P | Huntingdonshire | 91.0 | 96.0 | 5.0 | 5.5% | 112.0 | 16.0 | 16.7% |
| Eastfield I | Huntingdonshire | 166.0 | 163.0 | -3.0 | -1.8% | 165.0 | 2.0 | 1.2% |
| Elm P | Fenland | 204.0 | 206.0 | 2.0 | 1.0% | 203.0 | -3.0 | -1.5% |
| Elm Road P | Fenland | 207.0 | 204.0 | -3.0 | -1.4% | 198.0 | -6.0 | -2.9% |
| Elsworth P | South Cambridgeshire | 112.0 | 124.0 | 12.0 | 10.7% | 111.0 | -13.0 | -10.5% |
| Elton P | Huntingdonshire | 139.0 | 139.0 | 0.0 | 0.0% | 139.0 | 0.0 | 0.0% |
| Ely St John's P | East Cambridgeshire | 376.0 | 371.0 | -5.0 | -1.3% | 349.0 | -22.0 | -5.9% |
| Ely St Mary's J | East Cambridgeshire | 315.0 | 282.0 | -33.0 | -10.5% | 238.0 | -44.0 | -15.6% |
| Ermine Street Church Academy | Huntingdonshire | 204.0 | 241.0 | 37.0 | 18.1% | 278.0 | 37.0 | 15.4% |
| Eynesbury P | Huntingdonshire | 178.0 | 198.0 | 20.0 | 11.2% | 177.0 | -21.0 | -10.6% |
| Farcet P | Huntingdonshire | 103.0 | 110.0 | 7.0 | 6.8% | 106.0 | -4.0 | -3.6% |
| Fawcett P | Cambridge City | 374.0 | 375.0 | 1.0 | 0.3% | 376.0 | 1.0 | 0.3% |
| Fen Ditton P | East Cambridgeshire | 165.0 | 150.0 | -15.0 | -9.1% | 151.0 | 1.0 | 0.7% |
| Fen Drayton P | South Cambridgeshire | 93.0 | 110.0 | 17.0 | 18.3% | 102.0 | -8.0 | -7.3% |
| Fenstanton and Hilton P | South Cambridgeshire | 228.0 | 207.0 | -21.0 | -9.2% | 204.0 | -3.0 | -1.4% |
| Folksworth P | Huntingdonshire | 94.0 | 95.0 | 1.0 | 1.1% | 87.0 | -8.0 | -8.4% |
| Fordham P | East Cambridgeshire | 408.0 | 413.0 | 5.0 | 1.2% | 418.0 | 5.0 | 1.2% |
| Fourfields P | Huntingdonshire | 446.0 | 446.0 | 0.0 | 0.0% | 441.0 | -5.0 | -1.1% |
| Fowlmere P | South Cambridgeshire | 104.0 | 89.0 | -15.0 | -14.4% | 89.0 | 0.0 | 0.0% |
| Foxton P | South Cambridgeshire | 89.0 | 89.0 | 0.0 | 0.0% | 77.0 | -12.0 | -13.5% |
| Friday Bridge P | Fenland | 97.0 | 86.0 | -11.0 | -11.3% | 84.0 | -2.0 | -2.3% |
| Fulbourn P | East Cambridgeshire | 287.0 | 287.0 | 0.0 | 0.0% | 292.0 | 5.0 | 1.7% |
| Gamlingay F | Huntingdonshire | 375.0 | 388.0 | 13.0 | 3.5% | 431.0 | 43.0 | 11.1% |
| Girton Glebe P | South Cambridgeshire | 172.0 | 177.0 | 5.0 | 2.9% | 185.0 | 8.0 | 4.5% |
| Glebelands P | Fenland | 397.0 | 394.0 | -3.0 | -0.8% | 377.0 | -17.0 | -4.3% |
| Godmanchester Bridge Primary | Huntingdonshire | 193.0 | 210.0 | 17.0 | 8.8% | 239.0 | 29.0 | 13.8% |
| Godmanchester P | Huntingdonshire | 397.0 | 392.0 | -5.0 | -1.3% | 408.0 | 16.0 | 4.1% |
| Gorefield P | Fenland | 94.0 | 103.0 | 9.0 | 9.6% | 99.0 | -4.0 | -3.9% |
| Great Abington P | South Cambridgeshire | 139.0 | 135.0 | -4.0 | -2.9% | 144.0 | 9.0 | 6.7% |
| Great Gidding P | Huntingdonshire | 45.0 | 47.0 | 2.0 | 4.4% | 39.0 | -8.0 | -17.0% |
| Great Paxton P | Huntingdonshire | 97.0 | 107.0 | 10.0 | 10.3% | 97.0 | -10.0 | -9.3% |
| Great Staughton P | Huntingdonshire | 77.0 | 80.0 | 3.0 | 3.9% | 88.0 | 8.0 | 10.0% |
| Great Wilbraham P | East Cambridgeshire | 91.0 | 86.0 | -5.0 | -5.5% | 74.0 | -12.0 | -14.0% |
| Grove P | Cambridge City | 225.0 | 224.0 | -1.0 | -0.4% | 221.0 | -3.0 | -1.3% |
| Gt & Lt Shefford P | South Cambridgeshire | 210.0 | 208.0 | -2.0 | -1.0% | 208.0 | 0.0 | 0.0% |
| Guilford Morden P | South Cambridgeshire | 48.0 | 52.0 | 4.0 | 8.3% | 59.0 | 7.0 | 13.5% |
| Guyhirn P | Fenland | 72.0 | 74.0 | 2.0 | 2.8% | 75.0 | 1.0 | 1.4% |
| Hardwick P | South Cambridgeshire | 494.0 | 464.0 | -30.0 | -6.1% | 435.0 | -29.0 | -6.3% |
| Harston & Newton P | South Cambridgeshire | 126.0 | 121.0 | -5.0 | -4.0% | 104.0 | -17.0 | -14.0% |
| Hartford I | Huntingdonshire | 172.0 | 172.0 | 0.0 | 0.0% | 168.0 | -4.0 | -2.3% |
| Hartford J | Huntingdonshire | 227.0 | 227.0 | 0.0 | 0.0% | 233.0 | 6.0 | 2.6% |
| Haslingfield P | South Cambridgeshire | 153.0 | 144.0 | -9.0 | -5.9% | 140.0 | -4.0 | -2.8% |
| Hatton Park P | South Cambridgeshire | 357.0 | 392.0 | 35.0 | 9.8% | 365.0 | -27.0 | -6.9% |
| Hauxton P | South Cambridgeshire | 95.0 | 97.0 | 2.0 | 2.1% | 100.0 | 3.0 | 3.1% |
| Hemingford Grey P | Huntingdonshire | 291.0 | 280.0 | -11.0 | -3.8% | 292.0 | 12.0 | 4.3% |
| Histon & Impington I | South Cambridgeshire | 305.0 | 323.0 | 18.0 | 5.9% | 284.0 | -39.0 | -12.1% |
| Histon & Impington J | South Cambridgeshire | 479.0 | 457.0 | -22.0 | -4.6% | 455.0 | -2.0 | -0.4% |

Appendix 4 - October Census Comparison (Primary and Secondary) - Reception to Year 11 - Provisional Census Data

| | | Oct 21 Census R- Y11 | Oct 22 Census R- Y11 | Difference | % Difference | 23/24 Forecast R- Y11 | Difference to Oct 22 | Difference to Oct 22 % |
|---------------------------------------|----------------------|-------------------------|-------------------------|------------|-----------------|--------------------------|-------------------------|------------------------------|
| Holme P | Huntingdonshire | 108.0 | 118.0 | 10.0 | 9.3% | 112.0 | -6.0 | -5.1% |
| Holywell P | Huntingdonshire | 197.0 | 205.0 | 8.0 | 4.1% | 212.0 | 7.0 | 3.4% |
| Houghton P | Huntingdonshire | 184.0 | 177.0 | -7.0 | -3.8% | 190.0 | 13.0 | 7.3% |
| Huntingdon P | Huntingdonshire | 405.0 | 382.0 | -23.0 | -5.7% | 357.0 | -25.0 | -6.5% |
| Icknield P | South Cambridgeshire | 190.0 | 203.0 | 13.0 | 6.8% | 196.0 | -7.0 | -3.4% |
| Isle of Ely | East Cambridgeshire | 382.0 | 397.0 | 15.0 | 3.9% | 373.0 | -24.0 | -6.0% |
| Isleham P | East Cambridgeshire | 205.0 | 208.0 | 3.0 | 1.5% | 224.0 | 16.0 | 7.7% |
| Jeavons Wood | South Cambridgeshire | 420.0 | 419.0 | -1.0 | -0.2% | 396.0 | -23.0 | -5.5% |
| Kennett P | East Cambridgeshire | 98.0 | 95.0 | -3.0 | -3.1% | 99.0 | 4.0 | 4.2% |
| Kettlefields P | East Cambridgeshire | 120.0 | 110.0 | -10.0 | -8.3% | 117.0 | 7.0 | 6.4% |
| Kimbolton Primary Academy (Overhills) | Huntingdonshire | 58.0 | 67.0 | 9.0 | 15.5% | 63.0 | -4.0 | -6.0% |
| Kinderley P | Fenland | 70.0 | 76.0 | 6.0 | 8.6% | 72.0 | -4.0 | -5.3% |
| Kings Hedges P | Cambridge City | 421.0 | 391.0 | -30.0 | -7.1% | 408.0 | 17.0 | 4.3% |
| Kingsfield P | Fenland | 385.0 | 348.0 | -37.0 | -9.6% | 320.0 | -28.0 | -8.0% |
| Lantern P | East Cambridgeshire | 390.0 | 396.0 | 6.0 | 1.5% | 371.0 | -25.0 | -6.3% |
| Leverington P | Fenland | 206.0 | 203.0 | -3.0 | -1.5% | 205.0 | 2.0 | 1.0% |
| Linton Heights J | South Cambridgeshire | 231.0 | 234.0 | 3.0 | 1.3% | 231.0 | -3.0 | -1.3% |
| Linton I | South Cambridgeshire | 165.0 | 158.0 | -7.0 | -4.2% | 159.0 | 1.0 | 0.6% |
| Lionel Walden P | Fenland | 212.0 | 206.0 | -6.0 | -2.8% | 213.0 | 7.0 | 3.4% |
| Little Paxton P | Huntingdonshire | 353.0 | 324.0 | -29.0 | -8.2% | 327.0 | 3.0 | 0.9% |
| Little Thetford P | East Cambridgeshire | 97.0 | 92.0 | -5.0 | -5.2% | 93.0 | 1.0 | 1.1% |
| Littleport P | East Cambridgeshire | 420.0 | 408.0 | -12.0 | -2.9% | 390.0 | -18.0 | -4.4% |
| Manea P | Fenland | 232.0 | 242.0 | 10.0 | 4.3% | 249.0 | 7.0 | 2.9% |
| Marleigh Primary Academy | Cambridge City | 0.0 | 35.0 | 35.0 | 0.0% | 16.0 | -19.0 | -54.3% |
| Mayfield P | Cambridge City | 391.0 | 409.0 | 18.0 | 4.6% | 391.0 | -18.0 | -4.4% |
| Meadow P | South Cambridgeshire | 207.0 | 212.0 | 5.0 | 2.4% | 219.0 | 7.0 | 3.3% |
| Melbourn P | South Cambridgeshire | 387.0 | 398.0 | 11.0 | 2.8% | 420.0 | 22.0 | 5.5% |
| Meldreth P | South Cambridgeshire | 207.0 | 206.0 | -1.0 | -0.5% | 199.0 | -7.0 | -3.4% |
| Mepal & Witcham P | East Cambridgeshire | 89.0 | 94.0 | 5.0 | 5.6% | 102.0 | 8.0 | 8.5% |
| Meridian P | South Cambridgeshire | 198.0 | 205.0 | 7.0 | 3.5% | 203.0 | -2.0 | -1.0% |
| Middlefield P | Huntingdonshire | 204.0 | 204.0 | 0.0 | 0.0% | 201.0 | -3.0 | -1.5% |
| Millfield P | East Cambridgeshire | 348.0 | 348.0 | 0.0 | 0.0% | 367.0 | 19.0 | 5.5% |
| Milton P | South Cambridgeshire | 342.0 | 339.0 | -3.0 | -0.9% | 308.0 | -31.0 | -9.1% |
| Milton Road P | Cambridge City | 417.0 | 421.0 | 4.0 | 1.0% | 395.0 | -26.0 | -6.2% |
| Monkfield Park P | South Cambridgeshire | 402.0 | 415.0 | 13.0 | 3.2% | 413.0 | -2.0 | -0.5% |
| Morley Memorial P | Cambridge City | 383.0 | 396.0 | 13.0 | 3.4% | 378.0 | -18.0 | -4.5% |
| Murrow P | Fenland | 99.0 | 100.0 | 1.0 | 1.0% | 97.0 | -3.0 | -3.0% |
| Nene I | Fenland | 222.0 | 246.0 | 24.0 | 10.8% | 219.0 | -27.0 | -11.0% |
| New Road P | Fenland | 161.0 | 188.0 | 27.0 | 16.8% | 199.0 | 11.0 | 5.9% |
| Newnham Croft P | Cambridge City | 226.0 | 235.0 | 9.0 | 4.0% | 214.0 | -21.0 | -8.9% |
| Newton P | Huntingdonshire | 63.0 | 57.0 | -6.0 | -9.5% | 54.0 | -3.0 | -5.3% |
| Oakington CofE Primary School | South Cambridgeshire | 121.0 | 109.0 | -12.0 | -9.9% | 106.0 | -3.0 | -2.8% |
| Offord Primary School | Huntingdonshire | 85.0 | 80.0 | -5.0 | -5.9% | 93.0 | 13.0 | 16.3% |
| Orchard Parks | Cambridge City | 167.0 | 150.0 | -17.0 | -10.2% | 149.0 | -1.0 | -0.7% |
| Orchards P | Fenland | 362.0 | 372.0 | 10.0 | 2.8% | 319.0 | -53.0 | -14.2% |
| Over P | South Cambridgeshire | 210.0 | 210.0 | 0.0 | 0.0% | 203.0 | -7.0 | -3.3% |
| Park Lane P | Fenland | 419.0 | 412.0 | -7.0 | -1.7% | 428.0 | 16.0 | 3.9% |
| Park Street P | Cambridge City | 122.0 | 118.0 | -4.0 | -3.3% | 133.0 | 15.0 | 12.7% |
| Payne P | Fenland | 100.0 | 100.0 | 0.0 | 0.0% | 100.0 | 0.0 | 0.0% |
| Peckover P | Fenland | 388.0 | 406.0 | 18.0 | 4.6% | 405.0 | -1.0 | -0.2% |
| Pendragon P | South Cambridgeshire | 369.0 | 363.0 | -6.0 | -1.6% | 332.0 | -31.0 | -8.5% |
| Petersfield P | South Cambridgeshire | 115.0 | 129.0 | 14.0 | 12.2% | 141.0 | 12.0 | 9.3% |
| Priory J, St Neots | Huntingdonshire | 330.0 | 327.0 | -3.0 | -0.9% | 321.0 | -6.0 | -1.8% |
| Priory Park I | Huntingdonshire | 254.0 | 240.0 | -14.0 | -5.5% | 249.0 | 9.0 | 3.8% |
| Queen Edith P | Cambridge City | 402.0 | 399.0 | -3.0 | -0.7% | 405.0 | 6.0 | 1.5% |
| Queen Emma P | Cambridge City | 393.0 | 406.0 | 13.0 | 3.3% | 409.0 | 3.0 | 0.7% |
| Rackham P | East Cambridgeshire | 279.0 | 294.0 | 15.0 | 5.4% | 275.0 | -19.0 | -6.5% |
| Ramnoth J | Fenland | 315.0 | 321.0 | 6.0 | 1.9% | 331.0 | 10.0 | 3.1% |
| Ramsey J | Huntingdonshire | 240.0 | 261.0 | 21.0 | 8.8% | 257.0 | -4.0 | -1.5% |
| Ridgefield P | Cambridge City | 202.0 | 208.0 | 6.0 | 3.0% | 193.0 | -15.0 | -7.2% |
| Robert Arkenstall P | East Cambridgeshire | 273.0 | 284.0 | 11.0 | 4.0% | 286.0 | 2.0 | 0.7% |
| Sawtry I | Huntingdonshire | 176.0 | 183.0 | 7.0 | 4.0% | 199.0 | 16.0 | 8.7% |
| Sawtry J | Huntingdonshire | 255.0 | 268.0 | 13.0 | 5.1% | 258.0 | -10.0 | -3.7% |
| Shirley P | Cambridge City | 360.0 | 371.0 | 11.0 | 3.1% | 336.0 | -35.0 | -9.4% |
| Somersham Primary School | Huntingdonshire | 270.0 | 276.0 | 6.0 | 2.2% | 262.0 | -14.0 | -5.1% |
| Spaldwick P | Huntingdonshire | 89.0 | 87.0 | -2.0 | -2.2% | 89.0 | 2.0 | 2.3% |
| Spinney P | Cambridge City | 207.0 | 209.0 | 2.0 | 1.0% | 210.0 | 1.0 | 0.5% |
| Spinning I | Huntingdonshire | 203.0 | 195.0 | -8.0 | -3.9% | 185.0 | -10.0 | -5.1% |
| Spring Meadow I | East Cambridgeshire | 179.0 | 143.0 | -36.0 | -20.1% | 128.0 | -15.0 | -10.5% |
| St Alban's P | Cambridge City | 205.0 | 208.0 | 3.0 | 1.5% | 207.0 | -1.0 | -0.5% |
| St Andrew's P, Soham | East Cambridgeshire | 410.0 | 416.0 | 6.0 | 1.5% | 433.0 | 17.0 | 4.1% |
| St Anne's P | Huntingdonshire | 202.0 | 204.0 | 2.0 | 1.0% | 197.0 | -7.0 | -3.4% |
| St Helen's P | Huntingdonshire | 175.0 | 182.0 | 7.0 | 4.0% | 205.0 | 23.0 | 12.6% |
| St John's P, Huntingdon | Huntingdonshire | 360.0 | 365.0 | 5.0 | 1.4% | 320.0 | -45.0 | -12.3% |
| St Laurence P | Cambridge City | 275.0 | 271.0 | -4.0 | -1.5% | 257.0 | -14.0 | -5.2% |
| St Luke's CofE Primary School | Cambridge City | 119.0 | 103.0 | -16.0 | -13.4% | 101.0 | -2.0 | -1.9% |
| St Mary's P, St Neots | Huntingdonshire | 101.0 | 95.0 | -6.0 | -5.9% | 89.0 | -6.0 | -6.3% |
| St Matthew's P | Cambridge City | 618.0 | 628.0 | 10.0 | 1.6% | 599.0 | -29.0 | -4.6% |
| St Paul's P | Cambridge City | 138.0 | 165.0 | 27.0 | 19.6% | 131.0 | -34.0 | -20.6% |
| St Peter's J, Wisbech | Fenland | 229.0 | 225.0 | -4.0 | -1.7% | 231.0 | 6.0 | 2.7% |
| St Philip's P | Cambridge City | 256.0 | 260.0 | 4.0 | 1.6% | 213.0 | -47.0 | -18.1% |
| Stapleford P | South Cambridgeshire | 197.0 | 191.0 | -6.0 | -3.0% | 198.0 | 7.0 | 3.7% |
| Steeple Morden P | South Cambridgeshire | 175.0 | 174.0 | -1.0 | -0.6% | 161.0 | -13.0 | -7.5% |
| Stilton P | Huntingdonshire | 142.0 | 155.0 | 13.0 | 9.2% | 129.0 | -26.0 | -16.8% |
| Stretham P | East Cambridgeshire | 164.0 | 178.0 | 14.0 | 8.5% | 173.0 | -5.0 | -2.8% |
| Stukeley Meadows P | Huntingdonshire | 399.0 | 402.0 | 3.0 | 0.8% | 396.0 | -6.0 | -1.5% |
| Sutton P | East Cambridgeshire | 261.0 | 254.0 | -7.0 | -2.7% | 222.0 | -32.0 | -12.6% |
| Swaffham Bulbeck P | East Cambridgeshire | 88.0 | 90.0 | 2.0 | 2.3% | 92.0 | 2.0 | 2.2% |
| Swaffham Prior P | East Cambridgeshire | 100.0 | 100.0 | 0.0 | 0.0% | 108.0 | 8.0 | 8.0% |
| Swavesey P | South Cambridgeshire | 309.0 | 302.0 | -7.0 | -2.3% | 339.0 | 37.0 | 12.3% |
| Teversham P | East Cambridgeshire | 187.0 | 182.0 | -5.0 | -2.7% | 201.0 | 19.0 | 10.4% |
| The Galfrid Academy | Cambridge City | 319.0 | 292.0 | -27.0 | -8.5% | 255.0 | -37.0 | -12.7% |

Appendix 4 - October Census Comparison (Primary and Secondary) - Reception to Year 11 - Provisional Census Data

| | | Oct 21 Census R- Y11 | Oct 22 Census R- Y11 | Difference | % Difference | 23/24 Forecast R- Y11 | Difference to Oct 22 | Difference to Oct 22 % |
|--------------------------------------|----------------------|-------------------------|-------------------------|--------------|-----------------|--------------------------|-------------------------|------------------------------|
| The Pathfinder C of E Primary School | South Cambridgeshire | 289.0 | 344.0 | 55.0 | 19.0% | 349.0 | 5.0 | 1.5% |
| The Round House P | Huntingdonshire | 375.0 | 385.0 | 10.0 | 2.7% | 371.0 | -14.0 | -3.6% |
| The Shade P | East Cambridgeshire | 227.0 | 204.0 | -23.0 | -10.1% | 201.0 | -3.0 | -1.5% |
| The Vine Inter-Church Primary School | South Cambridgeshire | 401.0 | 405.0 | 4.0 | 1.0% | 371.0 | -34.0 | -8.4% |
| Thomas Eaton P | Fenland | 136.0 | 118.0 | -18.0 | -13.2% | 137.0 | 19.0 | 16.1% |
| Thongsley Fields P | Huntingdonshire | 236.0 | 238.0 | 2.0 | 0.8% | 209.0 | -29.0 | -12.2% |
| Thorndown P | Huntingdonshire | 538.0 | 521.0 | -17.0 | -3.2% | 503.0 | -18.0 | -3.5% |
| Thriplow P | South Cambridgeshire | 118.0 | 110.0 | -8.0 | -6.8% | 105.0 | -5.0 | -4.5% |
| Townley P | Fenland | 88.0 | 87.0 | -1.0 | -1.1% | 82.0 | -5.0 | -5.7% |
| Trumpington Meadows Primary | Cambridge City | 227.0 | 267.0 | 40.0 | 17.6% | 236.0 | -31.0 | -11.6% |
| Trumpington Park Primary School | Cambridge City | 318.0 | 382.0 | 64.0 | 20.1% | 427.0 | 45.0 | 11.8% |
| University of Cambridge Primary | Cambridge City | 597.0 | 622.0 | 25.0 | 4.2% | 626.0 | 4.0 | 0.6% |
| Upwood P | Huntingdonshire | 192.0 | 190.0 | -2.0 | -1.0% | 187.0 | -3.0 | -1.6% |
| Warboys P | Huntingdonshire | 330.0 | 333.0 | 3.0 | 0.9% | 371.0 | 38.0 | 11.4% |
| Waterbeach P | South Cambridgeshire | 451.0 | 477.0 | 26.0 | 5.8% | 490.0 | 13.0 | 2.7% |
| Weatheralls P | East Cambridgeshire | 438.0 | 428.0 | -10.0 | -2.3% | 365.0 | -63.0 | -14.7% |
| Westfield J | Huntingdonshire | 292.0 | 270.0 | -22.0 | -7.5% | 240.0 | -30.0 | -11.1% |
| Westwood J | Fenland | 779.0 | 798.0 | 19.0 | 2.4% | 745.0 | -53.0 | -6.6% |
| Wheatfields P | Huntingdonshire | 341.0 | 333.0 | -8.0 | -2.3% | 322.0 | -11.0 | -3.3% |
| Wilburton P | East Cambridgeshire | 111.0 | 118.0 | 7.0 | 6.3% | 121.0 | 3.0 | 2.5% |
| William de Yaxley J | Huntingdonshire | 216.0 | 227.0 | 11.0 | 5.1% | 206.0 | -21.0 | -9.3% |
| William Westley P | South Cambridgeshire | 200.0 | 201.0 | 1.0 | 0.5% | 192.0 | -9.0 | -4.5% |
| Willingham P | South Cambridgeshire | 347.0 | 346.0 | -1.0 | -0.3% | 346.0 | 0.0 | 0.0% |
| Winhills P | Huntingdonshire | 229.0 | 213.0 | -16.0 | -7.0% | 208.0 | -5.0 | -2.3% |
| Wintringham Primary Academy | Huntingdonshire | 35.0 | 69.0 | 34.0 | 97.1% | 70.0 | 1.0 | 1.4% |
| Wisbech St Mary P | Fenland | 185.0 | 169.0 | -16.0 | -8.6% | 178.0 | 9.0 | 5.3% |
| Wyton P | Huntingdonshire | 183.0 | 170.0 | -13.0 | -7.1% | 180.0 | 10.0 | 5.9% |
| Yaxley I | Huntingdonshire | 138.0 | 132.0 | -6.0 | -4.3% | 150.0 | 18.0 | 13.6% |
| | | 50,460.0 | 50,738.0 | 278.0 | 0.6% | 50,012.0 | -726.0 | -1.4% |

Secondary

| | | | | | | | | |
|---|----------------------|----------------|----------------|---------------|-------------|----------------|---------------|-------------|
| Abbey College | Huntingdonshire | 884.0 | 943.0 | 59.0 | 6.7% | 968.0 | 25.0 | 2.7% |
| Bassingbourn VC | South Cambridgeshire | 681.0 | 674.0 | -7.0 | -1.0% | 683.0 | 9.0 | 1.3% |
| Bottisham VC | East Cambridgeshire | 1,333.0 | 1,402.0 | 69.0 | 5.2% | 1,451.0 | 49.0 | 3.5% |
| Cambourne VC | South Cambridgeshire | 1,216.0 | 1,299.0 | 83.0 | 6.8% | 1,310.0 | 11.0 | 0.8% |
| Chesterton CC | Cambridge City | 1,009.0 | 1,013.0 | 4.0 | 0.4% | 1,118.0 | 105.0 | 10.4% |
| Coleridge CC | Cambridge City | 549.0 | 562.0 | 13.0 | 2.4% | 574.0 | 12.0 | 2.1% |
| Comberton VC | South Cambridgeshire | 1,428.0 | 1,481.0 | 53.0 | 3.7% | 1,518.0 | 37.0 | 2.5% |
| Cottenham VC | South Cambridgeshire | 872.0 | 874.0 | 2.0 | 0.2% | 909.0 | 35.0 | 4.0% |
| Cromwell CC | Fenland | 1,194.0 | 1,273.0 | 79.0 | 6.6% | 1,308.0 | 35.0 | 2.7% |
| Ely College | East Cambridgeshire | 1,193.0 | 1,325.0 | 132.0 | 11.1% | 1,424.0 | 99.0 | 7.5% |
| Ernulf Academy | Huntingdonshire | 638.0 | 707.0 | 69.0 | 10.8% | 764.0 | 57.0 | 8.1% |
| Hinchingbrooke S | Huntingdonshire | 1,543.0 | 1,595.0 | 52.0 | 3.4% | 1,716.0 | 121.0 | 7.6% |
| Impington VC | South Cambridgeshire | 1,162.0 | 1,186.0 | 24.0 | 2.1% | 1,203.0 | 17.0 | 1.4% |
| Linton VC | South Cambridgeshire | 832.0 | 826.0 | -6.0 | -0.7% | 823.0 | -3.0 | -0.4% |
| Littleport and East Cambridgeshire Acad | East Cambridgeshire | 574.0 | 548.0 | -26.0 | -4.5% | 593.0 | 45.0 | 8.2% |
| Longsands C | Huntingdonshire | 1,403.0 | 1,412.0 | 9.0 | 0.6% | 1,431.0 | 19.0 | 1.3% |
| Melbourn VC | South Cambridgeshire | 602.0 | 627.0 | 25.0 | 4.2% | 634.0 | 7.0 | 1.1% |
| Neale-Wade CC | Fenland | 1,272.0 | 1,239.0 | -33.0 | -2.6% | 1,323.0 | 84.0 | 6.8% |
| Netherhall S | Cambridge City | 884.0 | 930.0 | 46.0 | 5.2% | 927.0 | -3.0 | -0.3% |
| North Cambridge Academy | Cambridge City | 617.0 | 691.0 | 74.0 | 12.0% | 769.0 | 78.0 | 11.3% |
| Northstowe Secondary School | South Cambridgeshire | 302.0 | 468.0 | 166.0 | 55.0% | 617.0 | 149.0 | 31.8% |
| Parkside CC | Cambridge City | 614.0 | 635.0 | 21.0 | 3.4% | 617.0 | -18.0 | -2.8% |
| Sawston VC | South Cambridgeshire | 1,122.0 | 1,165.0 | 43.0 | 3.8% | 1,170.0 | 5.0 | 0.4% |
| Sawtry VC | Huntingdonshire | 732.0 | 785.0 | 53.0 | 7.2% | 818.0 | 33.0 | 4.2% |
| Sir Harry Smith CC | Fenland | 949.0 | 967.0 | 18.0 | 1.9% | 1,031.0 | 64.0 | 6.6% |
| Soham VC | East Cambridgeshire | 1,380.0 | 1,401.0 | 21.0 | 1.5% | 1,484.0 | 83.0 | 5.9% |
| St Bede's S | Cambridge City | 910.0 | 918.0 | 8.0 | 0.9% | 924.0 | 6.0 | 0.7% |
| St Ivo S | Huntingdonshire | 1,447.0 | 1,402.0 | -45.0 | -3.1% | 1,444.0 | 42.0 | 3.0% |
| St Peter's S, Huntingdon | Huntingdonshire | 1,085.0 | 1,201.0 | 116.0 | 10.7% | 1,223.0 | 22.0 | 1.8% |
| Swavesey VC | South Cambridgeshire | 1,253.0 | 1,233.0 | -20.0 | -1.6% | 1,212.0 | -21.0 | -1.7% |
| Thomas Clarkson | Fenland | 1,196.0 | 1,284.0 | 88.0 | 7.4% | 1,332.0 | 48.0 | 3.7% |
| Trumpington CC | Cambridge City | 411.0 | 449.0 | 38.0 | 9.2% | 569.0 | 120.0 | 26.7% |
| University Technical College | Cambridge City | 285.0 | 293.0 | 8.0 | 2.8% | 296.0 | 3.0 | 1.0% |
| Witchford VC | East Cambridgeshire | 671.0 | 680.0 | 9.0 | 1.3% | 722.0 | 42.0 | 6.2% |
| | | 32243.0 | 33488.0 | 1245.0 | 3.9% | 34905.0 | 1417.0 | 4.2% |

GROWTH FUND AND NEW SCHOOLS FUNDING POLICY 2023/24

1.0 INTRODUCTION

- 1.1 The following guidance provides details of the methodology for the local distribution for growth and new schools funding during the 2023/24 financial year to be approved by Schools Forum at the meeting to be held on 14th December 2022.
- 1.2 As per the Education & Skills Funding Agency (ESFA) School Revenue Funding 2023 to 2024 Operational Guide the Growth Fund can only be used to:
- support growth in pre-16 pupil numbers to meet basic need
 - support additional classes needed to meet the infant class size legislation. (Please note: The growth fund is not used for this purpose within Cambridgeshire due to the overall cost.)
 - meet the cost of new schools. (Pre-opening and diseconomies funding as prescribed in the New Schools Funding Policy.)
- 1.3 The Growth Fund must **not** be used to support:
- schools in financial difficulty: any such support for maintained schools should be provided from a de-delegated contingency
 - general growth due to popularity; this is managed through lagged funding
- 1.4 The Growth Fund may not be the most appropriate source of funding for growing schools, and the local authorities should use varying pupil numbers where there is a more permanent and significant change to numbers, and where it's appropriate for the change to be reflected in the funding formula (such as new schools growing to capacity or changes to age range).
- 1.5 As such, the Growth Fund is ring-fenced so that it is only used for the purposes of supporting growth in pupil numbers to meet **basic need** in both maintained schools and Academies. Any growth or expansion due to parental preference/popularity will **not** be eligible to be funded from the Growth Fund.
- 1.6 Local Authorities (LAs) are required to propose the criteria on which any growth funding is to be allocated to Schools Forum for approval. The criteria should both set out the circumstances in which a payment could be made and provide a basis for calculating the sum to be paid. The LA will also need to consult Schools Forum on the total sum to be retained and must update Schools Forum on the use of the funding. It is essential that the use of the Growth Fund is entirely transparent and solely for the purposes of supporting growth in pupil numbers.

2.0 FALLING ROLLS FUND

- 2.1 LAs may also set aside Schools Block funding to create a small fund to support schools with falling rolls, where local planning data shows that the surplus places will be needed within the next three financial years. However, as there is a mandatory requirement that *“Support is available only for schools judged Good or Outstanding at their last Ofsted inspection”*, Forum have previously taken the view that it was not appropriate to apply such a factor.

- 2.2 Although we recognise a number of schools have experienced falling rolls over the last 12-18 months the current forecast data does not provide evidence these surplus places will be required to meet Basic Need requirements in the next three years.

3.0 PROPOSED GROWTH FUND PROCESS AND CRITERIA 2023/24

- 3.1 Following feedback from schools and discussions at the Schools Forum meeting on 4th November the proposed approach for 2023/24 removes the requirement for schools to submit an application to access growth funding.
- 3.2 **Process** - The proposed approach for 2023/24 will take a more formulaic approach alongside the latest Place Planning information on planned expansions and requests for schools to operate additional classes to meet basic need in their area. As such it is proposed the following process will be followed:
- 1) On receipt of the October 2022 census current forecasts and local knowledge will be used to identify schools where there is planned or potential growth expected from September 2023.
 - 2) Where this forecast / expected growth is in excess of 15 pupils in Primary or 25 pupils in Secondary an initial view will be taken as to:
 - a. Whether the growth is due to basic need?
 - b. Whether the school would need to reorganise / employ additional teachers to accommodate the increase in pupils?
 - 3) If the question to both of these is "Yes" these schools would be identified as potentially qualifying for growth funding.
 - 4) An initial list of potentially qualifying schools would be shared with the Growth Panel (which would continue to comprise of LA and Head Teacher representatives) for comment.
 - 5) The information / forecasts would continue to be refined as revised pupil numbers / admissions data becomes available with initial proposals shared with schools in March/April.
 - 6) Revised figures would be then produced after the relevant secondary and primary offer days prior to final sign-off from the Growth Panel.
 - 7) Qualifying schools would be notified in May and funding allocated in September 2023.
 - 8) In instances where numbers were still inconclusive, the Growth Panel would reserve the right to defer a final decision until the start of the 2023-24 academic year.
 - 9) In the event of exceptional circumstances which were not identified as part of the initial process, schools would have the opportunity to contact the appropriate place planning officer via Clare.Buckingham@cambridgeshire.gov.uk and discuss their individual circumstances.

3.3 **Principles** - The following principles will continue to be applied in assessing the eligibility of schools to access additional funding:

- Where the predicted numbers for a **Primary** or Secondary School (excluding nursery classes and Post-16) for the following September show an increase, due to basic need, requiring the running of additional classes and/or significant restructure the school may be able to access additional funding.
- Where schools have chosen to admit above their Published Admissions Number (PAN) to meet parental preference from outside of their agreed planning area (**not** basic need), they will **not** be eligible to receive funding from the Growth Fund in recognition that the LA could have secured places for the children concerned at other schools.
- Where schools take the decision to extend their admission arrangements to give priority to children attending or in the catchment area of an out-of-county or out-of-area school, they will not be eligible to receive Growth Funding for the pupils concerned.
- In instances where the LA has specifically requested a school to expand to take an additional class to create capacity, but the forecast numbers do not represent the need for an additional class, schools may be able to claim additional funding. The funding will only be payable if the school is unable to reorganise its class teaching structure to meet the request.
- Where the LA has not specifically requested a school to operate an additional class, the school maybe be required to provide evidence that an additional class or tutor group and/or significant restructure would be required to meet basic need.
- A class is defined as “additional” if it requires a change in the school’s current or historical class organisation or number of classes. In Primary schools this may result in mixed year teaching where numbers dictate and this is seen as the most prudent option for the organisation of the school as a whole.
- Schools that have historically operated mixed-age classes or have a PAN in a multiple of less than 20 would be normally expected to operate some mixed-age classes. (The Growth Fund cannot be used to reduce class sizes.)
- The requirement for additional classes or forms of entry will be reviewed on a case-by-case basis. Funding will be allocated based on the requirement for additional support / classes / forms of entry.

3.4 **Funding** - Allocations will be calculated at the following rates:

| Phase | Academic Year | Financial Year (7/12ths) |
|-----------------|-----------------------------|-----------------------------|
| Primary (1FE) | £56,700 + £4,000 | £33,075 + £4,000 |
| Secondary (1FE) | £68,250 + £4,000 | £39,813 + £4,000 |

- **Please note:** Pro-rata allocations will be made where 0.5FE is deemed appropriate. The allocations include a £4,000 (pro-rata) allowance towards the cost of equipment, fixtures and fittings to set up a new classroom. Once agreed these amounts are guaranteed irrespective of actual pupil numbers to allow schools to staff appropriately.
- As noted above, no funding adjustments will be made in respect of “missing” pupils in Key Stage 1.
- Funding will be guaranteed for the year for which it was agreed, i.e. no clawback will be applied. However schools should be mindful that if numbers do not materialise (and are therefore not recorded on the October census) this may impact on funding for future years.
- Funding for maintained schools is only guaranteed for the financial year to which it relates. Future years funding will be assessed annually during the budget setting process.
- Where the LA has requested maintained schools to run an additional class and numbers do not materialise, funding to recognise the difference will be provided to compensate for the 5/12th period April to August. This will be calculated on the basis of 5/12th of the academic year Growth Fund allocation less the basic entitlement received for pupils in the additional class based on the October census.

3.5 **Other Considerations**

- The level of revenue balances for maintained schools and academies will be requested and considered as part of the application process. Any school with a revenue balance deemed as excessive would **not** be permitted to claim the full value of the additional growth funding. These instances will be reviewed on a case-by-case basis.
- New schools which are no longer funded via guaranteed variations to pupil numbers, but are still growing to capacity will be subject to the process and principles set out above. However, recognition will be given to the uncertainties in pupil numbers for such schools supporting new communities, and as such decisions may need to be taken outside of the timescales applied to more established schools.

3.6 **Academies** will take account of the additional guidance in **Appendix A** and be subject to the same criteria as above with the following additions and amendments:

- Where an academy is expanding due to parental preference rather than basic need the academy can bid directly to the ESFA, rather than being funded from the LA Growth Fund.
- Any funding allocated would be for the full academic year as original funding is based on the previous October Census. This would be subject to confirmation of actual funded numbers from the ESFA and would be calculated on receipt of the October Census at the start of the new academic year.

DfE additional guidance states:

“Where academies are funded on estimates, however, there is no need for them to access the growth fund for this purpose. This is because they will receive additional funding through a pupil number adjustment for actual numbers. We will identify academies funded on estimates in the January edition of the APT. Around 90% of former non-recoupment academies are funded on estimates.”

4.0 NEW SCHOOL FUNDING CRITERIA 2023/24

- 4.1 Where a new school is due to open, the regulations require that LAs should estimate the pupil numbers expected to join the school in September and fund accordingly, explaining the rationale underpinning the estimates. Under these regulations, LAs should estimate pupil numbers for all schools and academies, including free schools, where they have opened in the previous seven years, and are still adding year groups. LAs can adjust estimates each year, to take account of the actual pupil numbers in the previous funding period. For academies an allocation of funding is recouped from each LA and, following formula replication by the EFSA, an annual grant allocated.
- 4.2 There is an increasing requirement from the DfE/ESFA to guarantee / underwrite pupil numbers for new schools planned to be opened in future years. Although this is effectively the approach already applied for new schools, it does increase the risk should actual pupil numbers not reflect the current forecasts.
- 4.3 Due to the way in which schools funding is allocated from the DfE on a lagged basis (including additional funding for growth) this results in the existing schools within the county effectively having to subsidise all new schools whilst they fill to capacity and move to being funded on actual numbers. Therefore, the greater the differential between the actual numbers on roll at new schools as at the October Census and the guaranteed number to be funded, the greater the required subsidy and impact on all other schools.
- 4.4 Current practice has been to open new schools on the following basis:
- Primary schools – guaranteed funding for a minimum of 30 or 60 pupils in the first year of opening dependent on whether they are opening from reception up or for all year groups.
 - Secondary schools – guaranteed funding based on the planned capacity **only** if the initial pupil forecasts support this. For example, a 4FE secondary school with forecast numbers of between 90 and 120 in year 1 would be funded for 120 guaranteed places. If the forecast numbers are below 90 the guaranteed number would be adjusted to reflect the closest multiple of 30.
 - Guaranteed pupil numbers for the second year of operation onwards have been

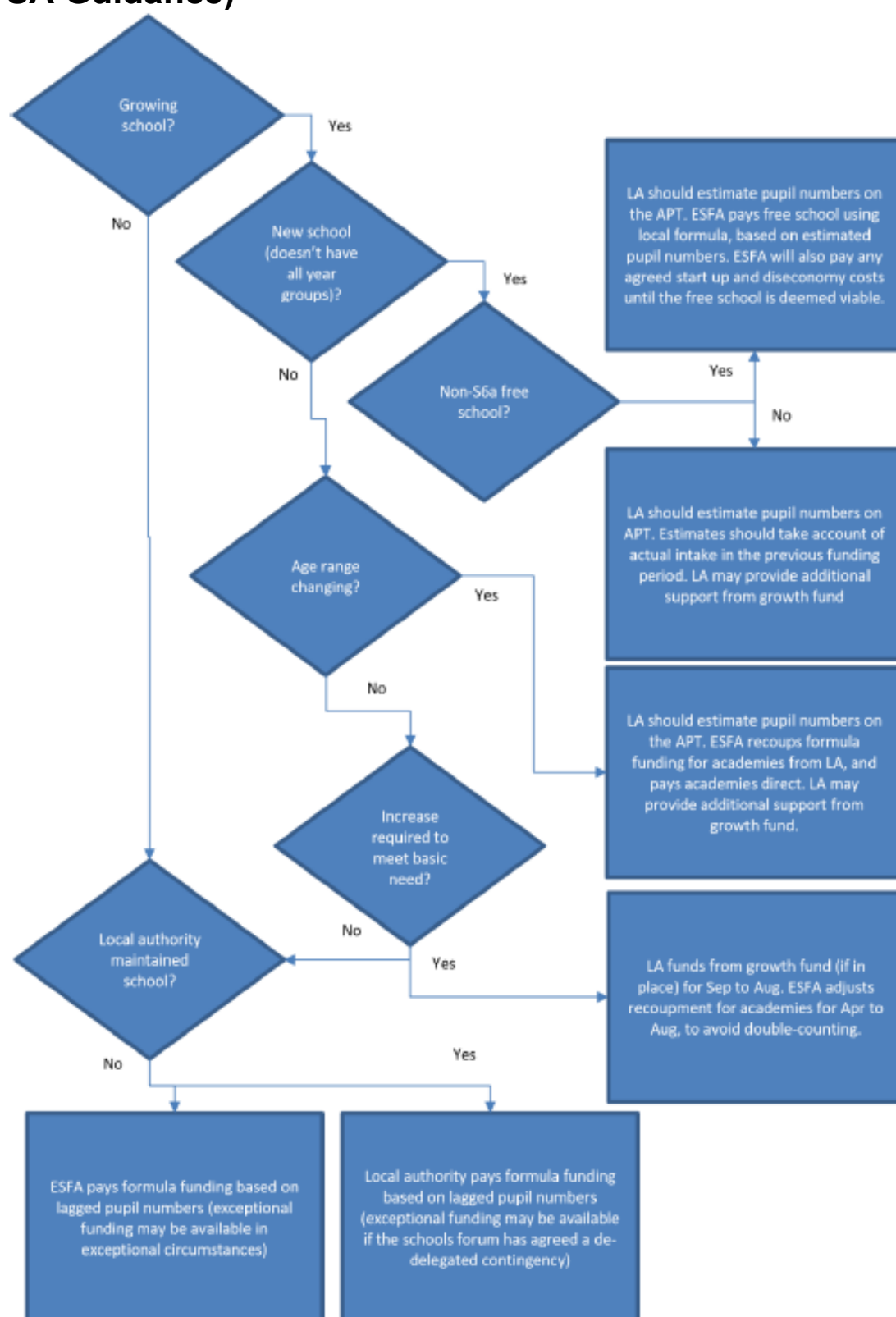
based on actual and forecast numbers following annual discussions.

- 4.5 The DfE have recently consulted on the future arrangements for the National Funding Formula – Fair funding for all. As part of this consultation funding for growth and new schools is under review with proposals to change the way in which this funding is allocated, including the funding of start-up costs. *“We propose that, when a hard NFF is implemented, funding for growth, new and growing schools, and falling rolls will still be allocated, as these will all continue to be important parts of the lagged funding system. However, the method through which this funding is allocated should change – moving to a new, national approach.”* Until this new approach is confirmed the LA are unable to provide any long-term commitments to funding arrangements as they will be subject to the outcomes of the national policy changes.
- 4.3 Alongside the main formula funding, pre-opening costs and diseconomies funding in respect of new basic need academies are also payable from the Growth Fund. Details of the current amounts payable can be found in the New Schools Funding Policy (**Appendix B**), which is also subject to approval on an annual basis.
- 4.4 This funding must be made available to new basic need academies on the same basis as maintained schools, including those funded on estimates – the only exception is that the ESFA will continue to fund start-up and diseconomy costs for new free schools where they are not being opened to meet an identified basic need requirement as referred to in section 6A of the Education and Inspections Act 2006.

5.0 AMENDMENTS TO FUNDING CRITERIA

- 5.1 It is possible to amend the above Growth Fund criteria during the year where this becomes necessary; however, the revised criteria must be submitted to the ESFA for compliance checking and must also be approved by Schools Forum before the revised criteria can be implemented.

Appendix A – Funding Flow Chart for Growing Schools (from EFSA Guidance)



Appendix B – New School Funding

Pre-Opening Funding for New Schools

The pre-opening funding is intended to cover all revenue costs up to the opening of the school. Capital costs to secure and develop the school's site, and ICT to support the curriculum, are funded separately for the LA's five year rolling programme of capital investment. Books and other curriculum materials may be purchased before opening, using an advance of the post-opening diseconomies funding.

The pre-opening funding is to cover:

- project management (support to coordinate all work leading to the development of the school);
- staff recruitment (including the Head teacher/Principal);
- salary costs (which often include the Head teacher/Principal, Finance/Business Manager and administrative support in advance of opening);
- office costs.

Primary Schools - funding is calculated on the basis of 1 term prior to the date of opening.

Secondary Schools - funding is calculated on the basis of 2 terms prior to the date of opening.

Special Schools - funding is calculated on the basis of 2 terms prior to the date of opening.

In all instances the funding can be accessed earlier on request, but the total amount to be received remains as detailed below.

| | |
|------------------|-----------------|
| Primary | £50,000 |
| Secondary | £150,000 |
| Special | £130,000 |

Post-Opening Diseconomies Funding

Resources –

Paid annually as the school builds up to capacity –

- £125 for each new mainstream place created in the primary phase (years R to 6)
- £500 for each new mainstream place created in the secondary phase (years 7 to 13)

New places will be calculated annually based on the increases in roll from year to year.

Leadership –

Paid annually based on the number of year-groups that the school will ultimately have. The amount paid to mainstream schools with pupils aged 4 – 15 each year is set out below:

| Year | 1 | 2 | 3 | 4 | 5 | 6 | Total |
|-------------|----------|----------|----------|----------|----------|----------|-----------------|
| Primary | £40,250 | £33,750 | £27,000 | £20,250 | £13,500 | £6,250 | £141,500 |
| Secondary | £125,000 | £93,500 | £62,500 | £31,000 | | | £312,000 |