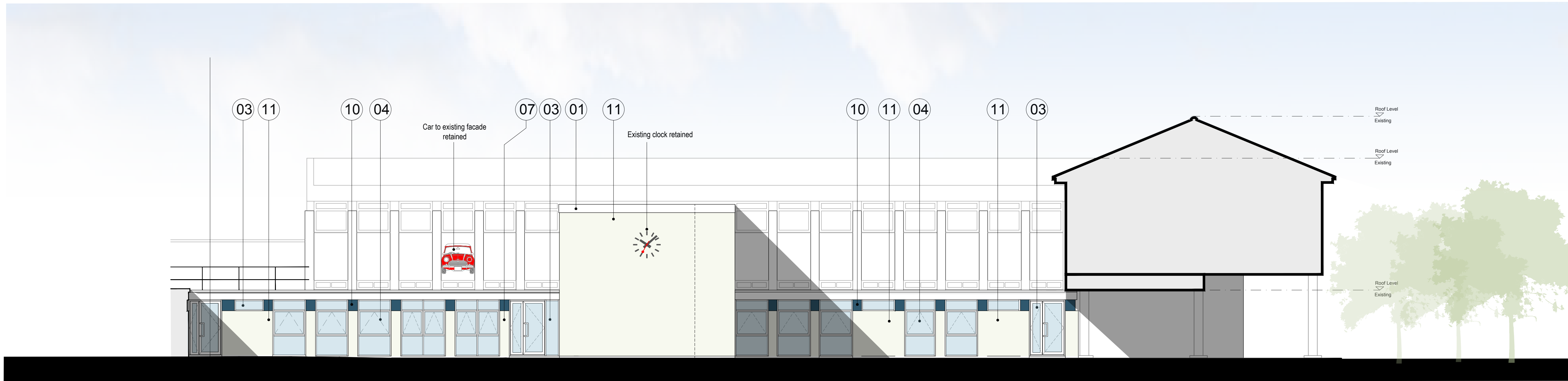


EXISTING ELEVATION PROPOSED SECTION PROPOSED ELEVATION EXISTING ELEVATION/SECTION

A  
A4302  
PROPOSED ELEVATION 5  
1:100



EXISTING ELE/SEC PROPOSED ELEVATION EXISTING ELEVATION/SECTION

B  
A4302  
PROPOSED ELEVATION 6  
1:100

- Materials:
- 01. PPC aluminum parapet capping
  - 02. Through coloured render on insulation background
  - 03. PPC double glazed aluminum windows / doors
  - 04. PPC double glazed curtain walling with integral glazed windows and doors
  - 05. Rooflight
  - 06. PPC aluminum louvre door
  - 07. Facing brickwork
  - 08. Entrance canopy
  - 09. PPC double glazed aluminum sloped glazing rooflight system
  - 10. Insulated PPC aluminum spandrel panels

- 11. Through coloured render on existing brickwork
- 12. Coloured paint to existing structure
- 13. New stainless steel illuminated signage
- 14. Cantilevered timber bench
- 15. Powder coated galvanised steel gates
- 16. Hardwood handrailing
- 17. 25mm recessed panel of brickwork

DO NOT SCALE

#### SAFETY, HEALTH AND ENVIRONMENTAL INFORMATION

In addition to the hazards/risks normally associated with the types of work detailed on this drawing, note the following:

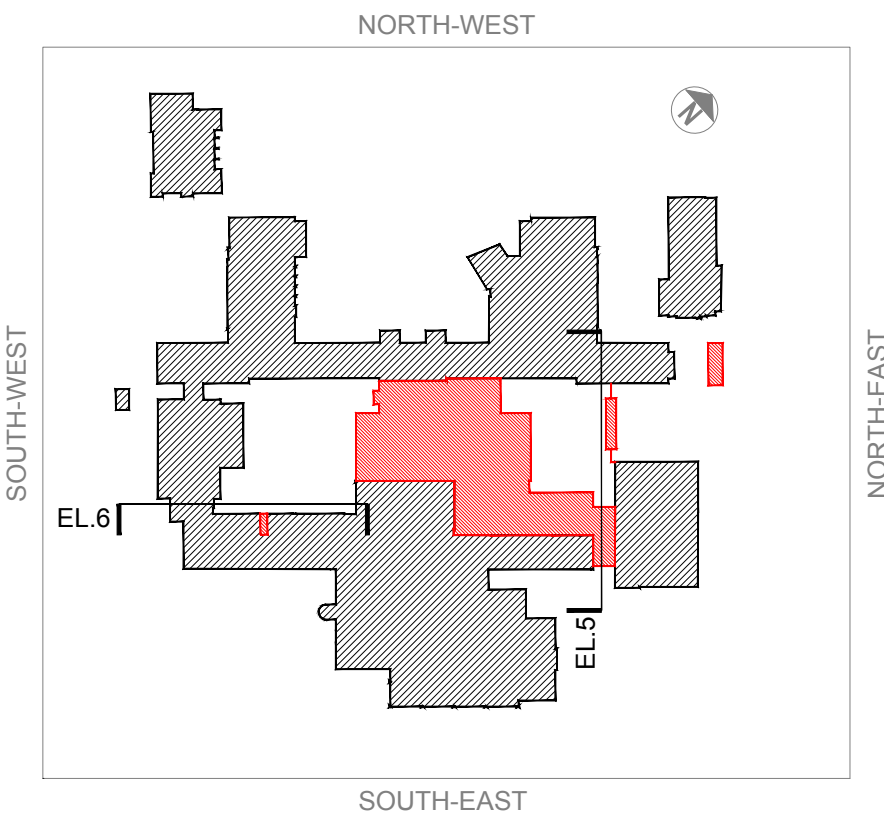
#### CONSTRUCTION

#### MAINTENANCE/CLEANING

#### DECOMMISSIONING/DEMOLITION

It is assumed that all works will be carried out by a competent contractor working, where appropriate, to an approved method statement

#### ELEVATIONS' KEY PLAN:



Rev.	Date	Description	By	Chk'd	App'd
PL.1	21.07.17	PLANNING ISSUE	LS	JH	RC

Drawing Status	Suitability
<b>FIT FOR PLANNING</b>	<b>S7</b>

**ATKINS**

4th Floor, The Octagon  
27 Middleborough  
Colchester, Essex  
England  
CO1 1TG  
Tel: +44 (0)1206 732000  
Fax: +44 (0)1206 732020  
www.atkinsglobal.com

Copyright © Atkins Limited (2015)



Project Title  
**CHESTERTON COMMUNITY COLLEGE**

Drawing Title  
**PROPOSED ELEVATIONS/SECTIONS  
Sheet 3 of 7**

Scale 1:100	Designed JH	Drawn JH/LS	Checked JH	Authorised RC
Original Size A1	Date July 2017	Date July 2017	Date July 2017	Date July 2017
Drawing Number 5138389-ATK-Z1-ZZ-EL-A-4302				Revision PL.1