

Produced on:

03 March 2020



Corporate Performance Report

Quarter 3

2019/20 financial year

Communities and Partnership Committee

Business Intelligence
Cambridgeshire County Council
business.intelligence@cambridgeshire.gov.uk

Key



Data Item	Explanation
Target / Pro Rata Target	The target that has been set for the indicator, relevant for the reporting period
Current Month / Current Period	The latest performance figure relevant to the reporting period
Previous Month / previous period	The previously reported performance figure
Direction for Improvement	Indicates whether 'good' performance is a higher or a lower figure
Change in Performance	Indicates whether performance is 'improving' or 'declining' by comparing the latest performance figure with that of the previous reporting period
Statistical Neighbours Mean	Provided as a point of comparison, based on the most recently available data from identified statistical neighbours.
England Mean	Provided as a point of comparison, based on the most recent nationally available data
RAG Rating	<ul style="list-style-type: none"> • Red – current performance is off target by more than 10% • Amber – current performance is off target by 10% or less • Green – current performance is on target by up to 5% over target • Blue – current performance exceeds target by more than 5% • Baseline – indicates performance is currently being tracked in order to inform the target setting process • Contextual – these measures track key activity being undertaken, but where a target has not been deemed pertinent by the relevant service lead
Indicator Description	Provides an overview of how a measure is calculated. Where possible, this is based on a nationally agreed definition to assist benchmarking with statistically comparable authorities
Commentary	Provides a narrative to explain the changes in performance within the reporting period
Useful Links	Provides links to relevant documentation, such as nationally available data and definitions

Indicator 136: Number of Learner Registrations as a Proportion of the Contractual Target

[Return to Index](#)

March 2020

Target	Direction for Improvement	Current Quarter	Previous Quarter	Change in Performance
1496	↑	1386	582	n/a

RAG Rating

A

Indicator Description

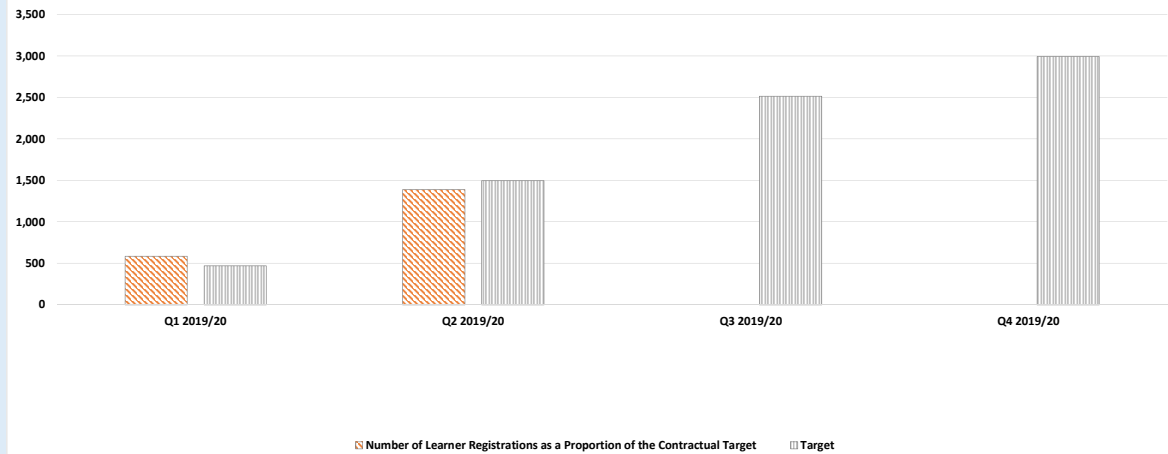
Note: Q1 commences in August as it is on an academic year timetable. The current learner registrations data therefore represents the period November 2019 to January 2020.

The figure includes sub-contractors and direct delivery. The target and actual figures are cumulative.

This indicator refers to the number of individual learners registered against the contractual target. The indicator does not refer to the total number of enrolments, as a single learner can have multiple enrolments and outcomes.

Useful Links

Cambridgeshire Performance

**Commentary**

Q2 is slightly below target, however a action plan has been implemented to catch up and hit profile.

Indicator 137: Percentage of Learners Retained as a Proportion of Learner Registration

[Return to Index](#)

March 2020

Target	Direction for Improvement	Current Quarter	Previous Quarter	Change in Performance
99%	↑	93%	99.0%	Declining

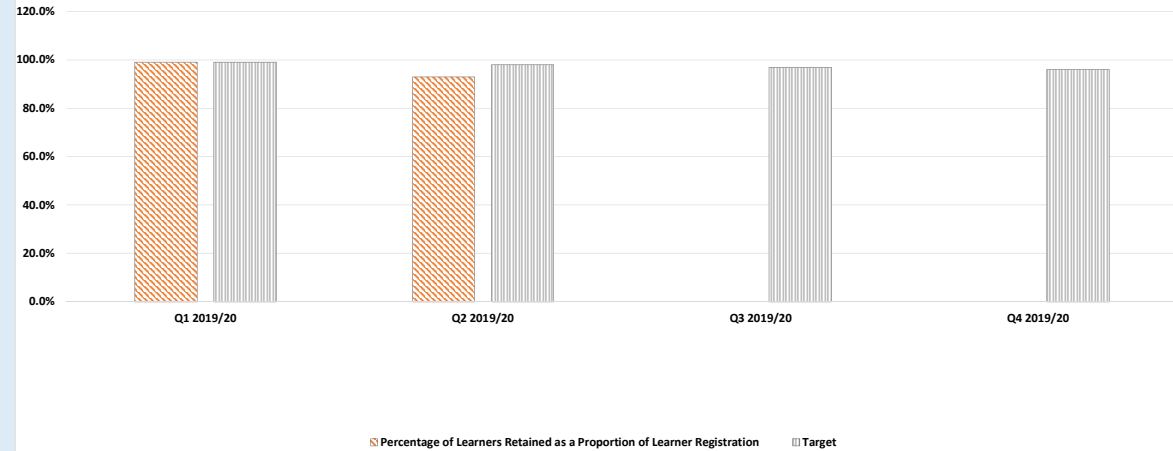
RAG Rating

A

Indicator Description

Note: Q1 commences in August. The current learner retention data therefore represents the period August to October. The enrolment figure used in the percentage includes sub-contractors and direct delivery. The target and actual figures are cumulative.

The retention figure in this indicator refers to the % of individual learners who have been retained out of all Learners and does not refer to the total enrolment numbers. An individual learner can have multiple enrolments and outcomes.

Useful Links**Cambridgeshire Performance****Commentary**

Indicator 123: Victim-based crime per 1,000 of population (12 Months rolling)

[Return to Index](#)

March 2020

Target	Direction for Improvement	Current Quarter	Previous Quarter	Change in Performance
Contextual	↓	62.6	63.9	Improving
Statistical Neighbours Mean	England Mean	RAG Rating		
59.7	72.6	Contextual		

Indicator Description

Lower crime rates enable a safer environment for the public.

This indicator shows police-recorded victim based crimes, including violence against the person, sexual offences, robbery, theft offences and criminal damage and arson offences.

This indicator is a rolling 12 month figure which represents the sum of incidents in the preceding 12 months as a rate per 1000.

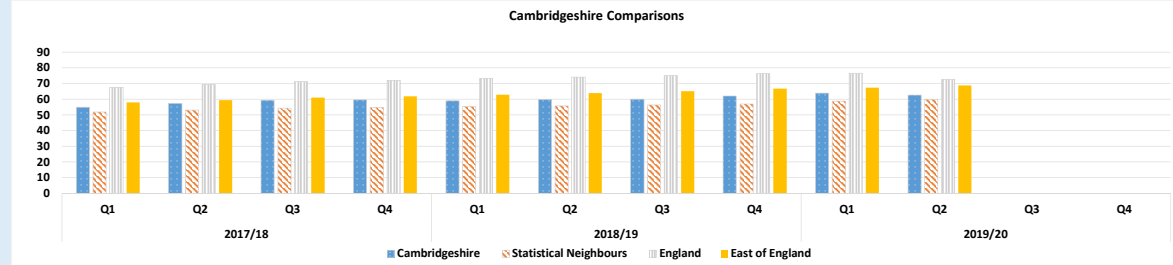
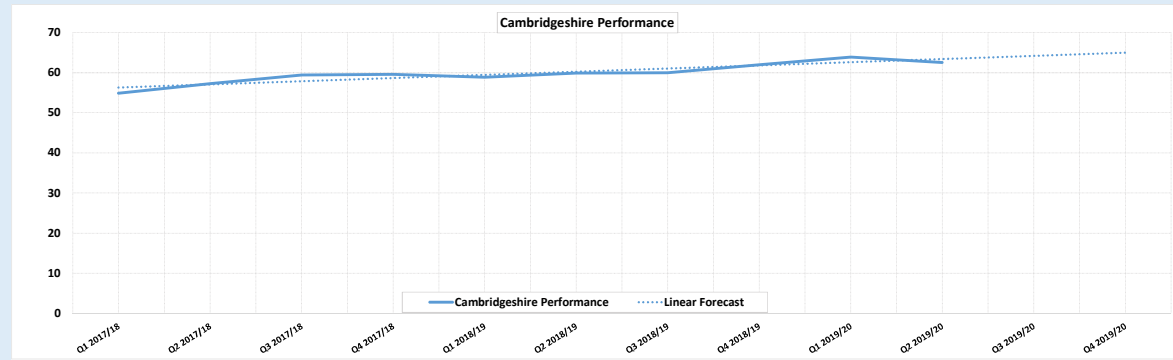
Useful Links

Local Authority Interactive Tool (LAIT):

<https://www.gov.uk/government/publications/local-authority-interactive-tool-lait>

LG Inform:

https://lginform.local.gov.uk/reports/leastandard?mod-metric=3808&mod-period=2&mod-area=F100000003&mod-group=CIPFA_Near_Neighbours&mod-type=comparisonGroupType

**Commentary**

Indicator 37: Number of visitors to libraries/community hubs per 1,000- year-to-date

Return to Index

March 2020

Target	Direction for Improvement	Current Quarter	Previous Quarter	Change in Performance
2,763	↑	2,238	1,518	NA

RAG Rating

R

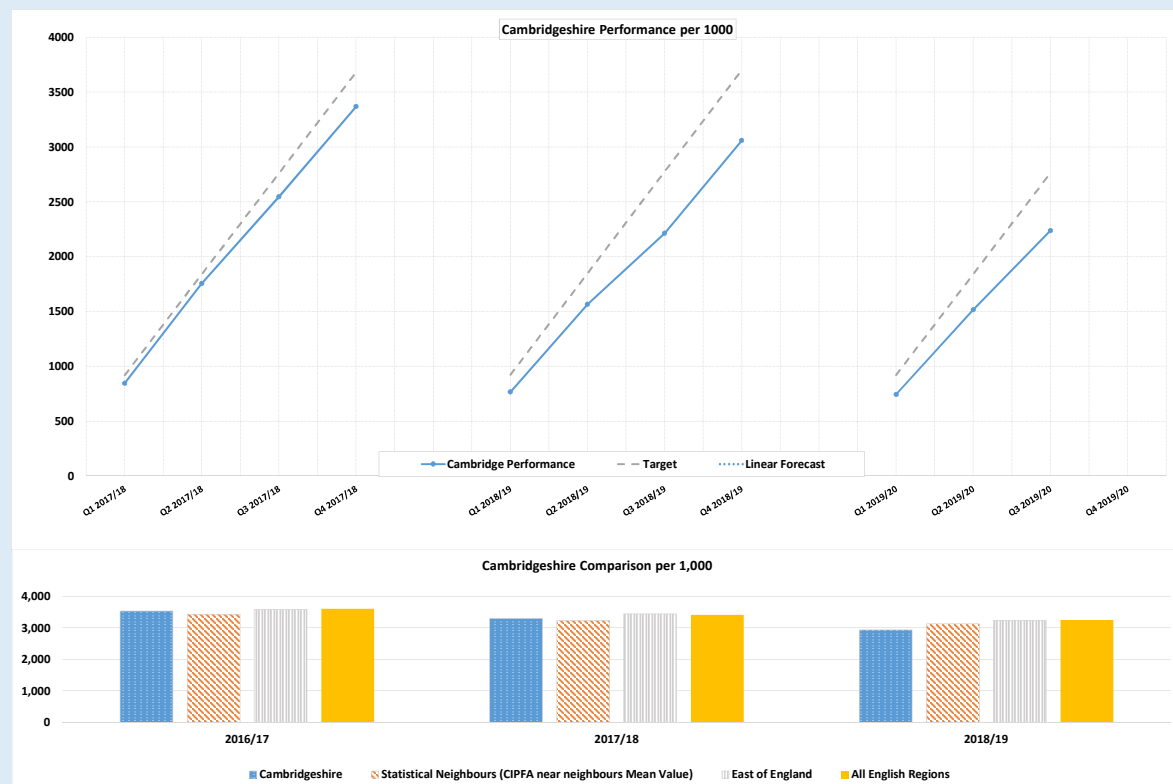
Indicator Description

The indicator is a cumulative total, each quarter, of the number of physical visits to Cambridgeshire libraries per 1,000 population. The relevant mid-year population figure for each financial year is used to calculate the rate for each quarter.

The comparator data is from LG Inform and also measures the number of physical visits to libraries per 1,000 population. The comparator data is based on mid-year 2015 population statistics, and so does not exactly match the quarterly data for Cambridgeshire. Source: CIPFA Statistical Information Services

Useful Links

LG Inform:

<https://lginform.local.gov.uk/>


Commentary

There have been more visitors to libraries compared to the same period in the previous year (1.46 million compared to 1.44 million). This indicates the service is on target to improve on the the number of visitors in the previous year. Going forward we will be introducing smart technology to allow access to libraries outside of staffed opening hours so anticipate increased performance. Pilot libraries for Open Access will go live in Q4 2020/21.

Indicator 38: Number of item loans (including eBook loans) – quarterly

[Return to Index](#)

March 2020

Target	Direction for Improvement	Current Quarter	Previous Quarter	Change in Performance
Contextual	↑	443,324	544,778	Declining

RAG Rating

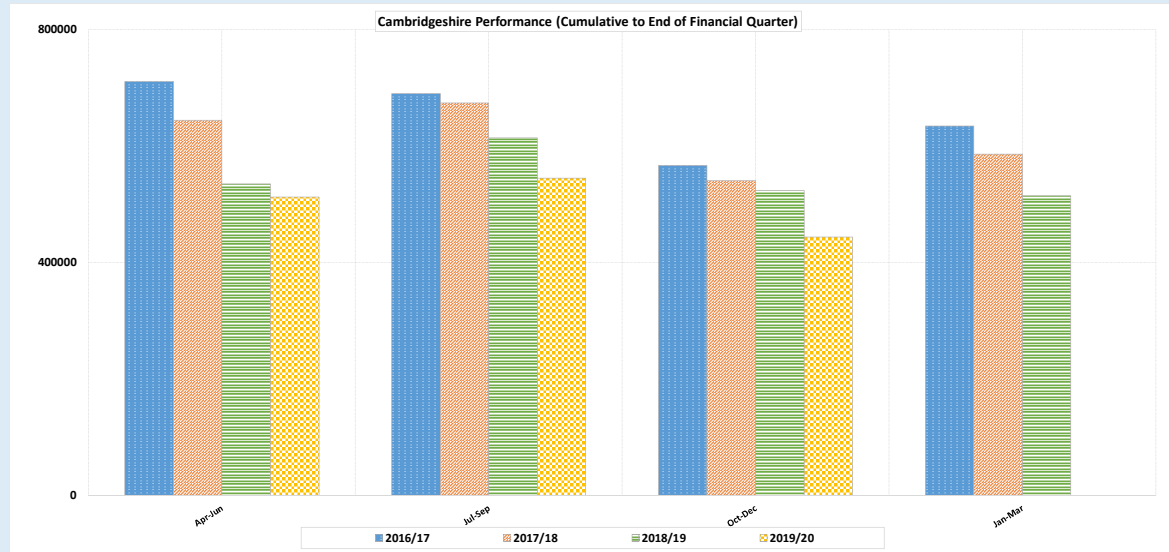
Contextual

Indicator Description

This indicator is based on extraction of data from the library management system and information from our eBook supplier.

Useful Links

LG Inform:

<https://lginform.local.gov.uk/>
**Commentary**

The total issue figure is slightly down on the same period in the previous year which may in part be due to a longer Christmas closure period.

Indicator 174: Priority 4a - Tackling Hate Crime - Hate Crime Rates Per 100,000 Population (Breakdown by District)

[Return to Index](#)

March 2020

Target	Direction for Improvement	Current Quarter	Previous Quarter	Change in Performance
Contextual	NA	26.84	31.93	NA
RAG Rating				
Contextual				

Indicator Description

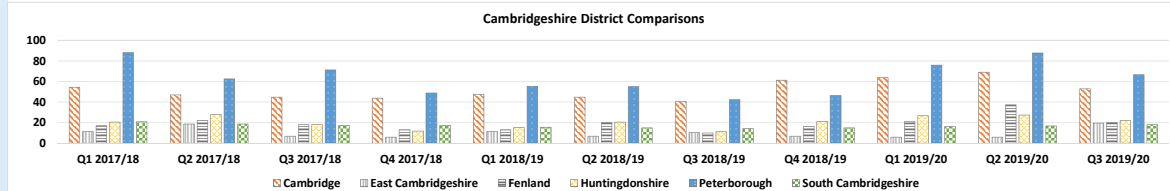
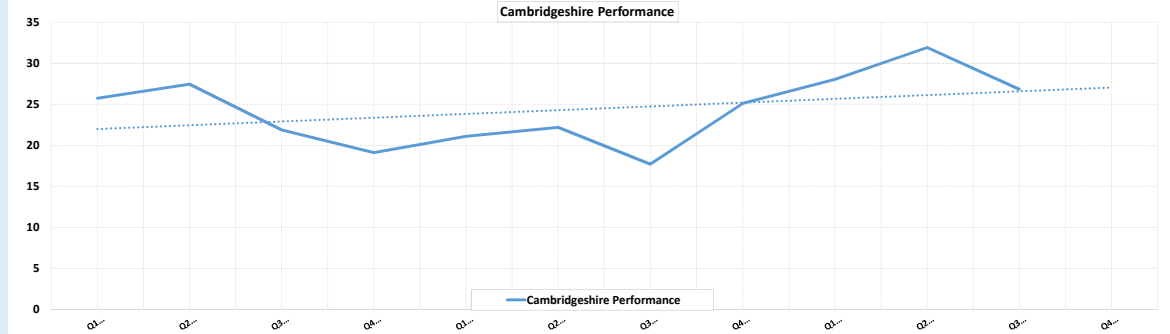
Data has been compiled by Cambridgeshire Research Group from CADET the corporate performance tool supplied by Cambridgeshire Constabulary's Performance Team on 25th February 2020 and is correct as of that date.

In May 2018 Cambridgeshire Constabulary went live with a new IT system called Athena, this means that data on crimes from that date (23rd May 2019) is subject to recording and extraction methods that are not identical to the previous system.

Previous Hate Crime published by Cambridgeshire Research Group may be reported using different time periods and therefore may not be comparable.

Rates have been calculated by using Cambridgeshire County Council Research teams latest local population estimates: Cambridgeshire mid-2015 estimates and Peterborough mid-2017 estimates.

We have removed the 'direction for improvement' from this indicator because although we want to see less hate crime the commentary makes clear it is under-reported.

Useful Links**Commentary**

We have seen reported hate increase generally, inasmuch as incidents of hate are seen in social media and in the news. Higher rates of hate tend to occur in more densely populated areas such as large towns and cities, and at a higher frequency at night. Our data tells us that hate in Cambs is largely situational, which means "hate" tends to be used during another incident. For example in road rage – one party may abuse the other and add an abusive comment about the other drivers' race. Other examples include where a shoplifter is arrested by a black police officer or detained by a Polish security guard. The guard/officer may be abused and then further abused for being black/Polish. The term 'situational' is not applied to belittle the offences, they are all reprehensible, but without the original offence or incident, the hate element may not have existed. Very little "hate" is in isolation, although incidents do occur infrequently. We will always consider an increase in reported hate encouraging because historically hate was (and still is) hugely underreported. Lots of work is being done, including that championed by the C&P Committee, to promote awareness and reporting of hate so we hope that more people will come forward.

Indicator 175: Priority 4b - Hate Crimes - Online Reporting via True Vision

[Return to Index](#)

March 2020

Target	Direction for Improvement	Current Month	Previous Month	Change in Performance
Contextual	NA	22.00	30.00	NA

RAG Rating

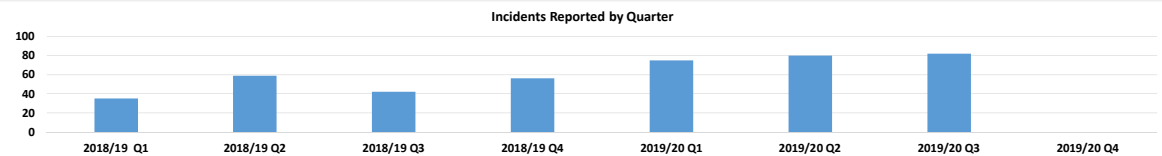
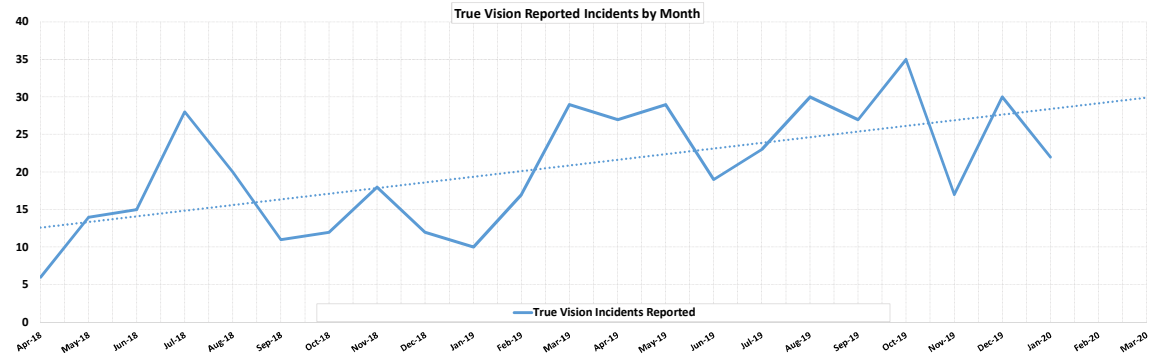
Contextual

Indicator Description

This reported incidents data is collected from True Vision, an online reporting tool used as an alternative to direct reporting via 101 or 999. Third Party Reporting Centres (TPRC) are advised to use True Vision, although it is not known what percentage these centres constitute.

True Vision is intended to facilitate the reporting of Hate Crimes, although not all incidents recorded are consistent with this due to a lack of user understanding.

We have removed the 'direction for improvement' from this indicator because although we want to see less hate crime the commentary makes clear it is under-reported.

Useful Links**Commentary**

The level of actual "hate" (people who have been targeted because of who they are – be it race, religion, disability, sexual orientation, or gender ID) being reported via true vision has increased. We were frequently receiving reports via True Vision (TV) for non-hate, so the fact that this has decreased & actual hate has increased means that the work we are doing to encourage understanding of what hate is may be proving effective.

People are reporting incidents that were usually going unreported – again, what we are encouraging.

These incidents could be described as "minor" on a sliding scale of criminality but are always important when it comes to crimes involving targeted behaviour. We need to be aware of what is happening in our communities, even if there is no actual crime we can investigate.

Indicator 176: Priority 7a - Wisbech 2020 Project - Wisbech School Attainment Levels

[Return to Index](#)

March 2020

	Direction for Improvement	Current Year	Previous Year	Change in Performance
EY	↑	63.91%	60.36%	Improving
KS1	↑	52.65%	47.48%	Improving
KS2	↑	45.29%	41.31%	Improving

Indicator Description

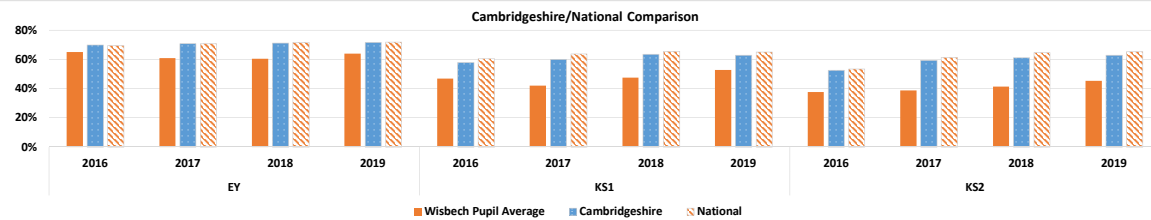
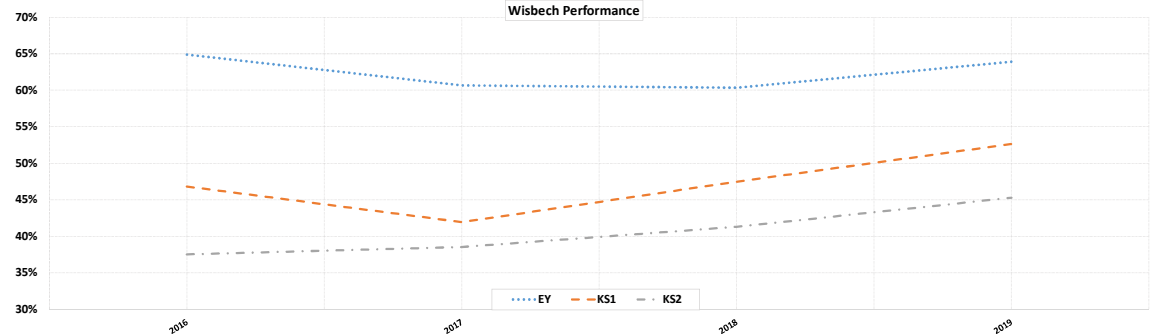
Statistics for Wisbech based on a weighted average by cohort numbers for pupils in the below schools.

Peckover Primary School
Orchards Church Of England Primary
Clarkson Infants School
St Peter's CofE Aided Junior School
The Nene Infant Academy
Ramnoth Junior School
Elm Road Primary School
Elm CofE Primary School
Friday Bridge Community Primary School
Leverington Academy
Beaupre Community Primary School

For EY, attainment is measured by % of students who have achieved the expected 'Good Level of Development' (GLD)

For KS1 and KS2, attainment is measured by % of students who have achieved 'Reading, Writing, Maths (RWM) equal or above expected standard'

Statistics source: Nexus

Useful Links**Commentary**

These figures have been updated with the latest data available from the Department for Education for 2019 tests. They show improvement in attainment at Early Years, KS1 and KS2.

Indicator 177: Priority 7b - Wisbech 2020 - LAC from Wisbech

[Return to Index](#)

March 2020

Target	Direction for Improvement	Current Year	Previous Year	Change in Performance
Contextual	↓	50.00	44.00	Declining

RAG Rating

Contextual

Indicator Description

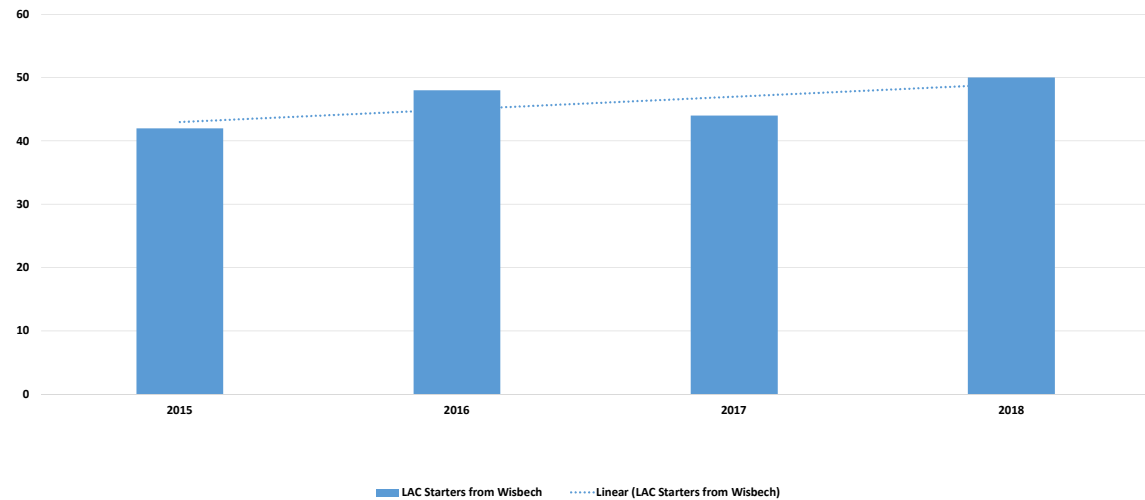
Wisbech LAC data compiled from LAC Return 903 data from years 2015-2018.

Data includes LAC Return entries with an RNE 'S' (Started to be Looked After), and a current home address within the Wisbech Parish.

Useful Links

<http://www.wisbech2020vision.co.uk/>

LAC Starters from Wisbech

**Commentary**

Data covering the period 2019/20 will be available after the completion of the statutory returns in Summer 2020.

Indicator 178: Priority 7c - Cambridgeshire FSM6 Educational Attainment

[Return to Index](#)

March 2020

	Direction for Improvement	Current Year	Previous Year	Change in Performance
EY	↑	47.50%	49.30%	Declining
KS1	↑	41.00%	39.00%	Declining
KS2	↑	41.50%	38.30%	Declining

Indicator Description

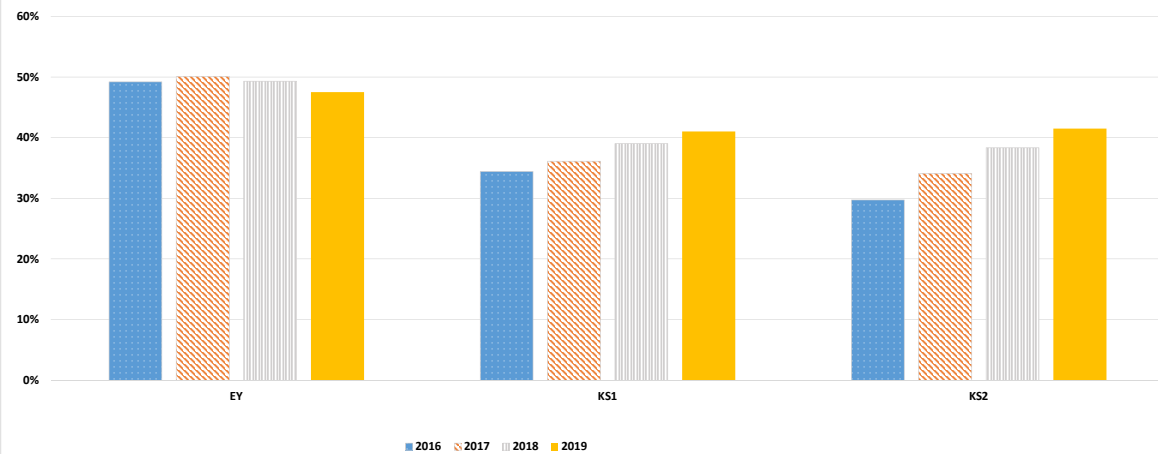
For Early Years (EY), attainment is measured by the percentage of students who have achieved the expected 'Good Level of Development' (GLD).

For Key Stage 1 (KS1) and Key Stage 2 (KS2), attainment is measured by the percentage of students who have achieved 'Reading, Writing, Maths (RWM) equal or above expected standard'

Statistics Source: Nexus

Useful Links

Cambridgeshire FSM6 Educational Attainment by Level and Year

**Commentary**

These figures have been updated with the latest data available from the Department for Education for 2019 tests. They show improvement in attainment at KS1 and KS2, and a slight decrease at Early Years.

Indicator 179: Priority 7d - Cambridgeshire Employment Rates by District

[Return to Index](#)

March 2020

	Direction for Improvement	Current Quarter	Previous Quarter	Change in Performance
Cambs City	↑	80.20	80.30	Declining
East Cambs	↑	84.30	83.70	Improving
Fenland	↑	77.30	78.60	Declining
Hunts	↑	79.30	79.20	Improving
South Cambs	↑	84.40	84.50	Declining

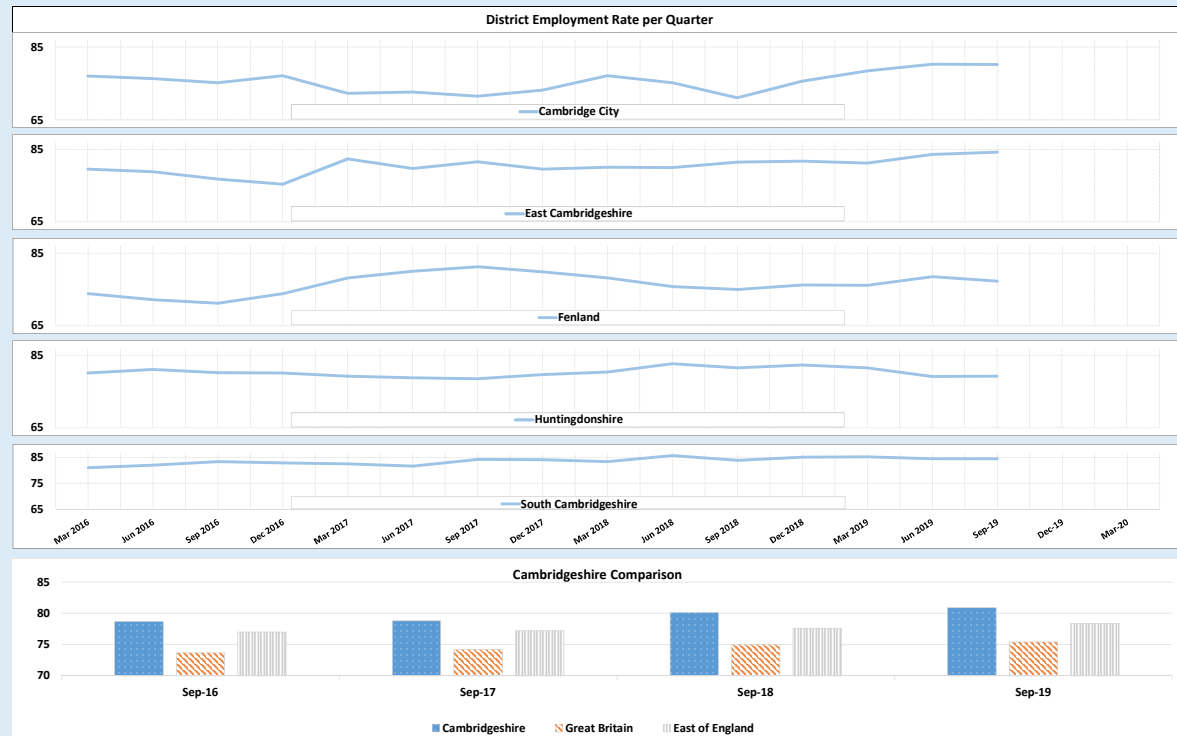
Indicator Description

Data from the annual population survey - 'A residence based labour market survey encompassing population, economic activity (employment and unemployment), economic inactivity and qualifications. These are broken down where possible by gender, age, ethnicity, industry and occupation. Available at Local Authority level and above. Updated quarterly.'

Employment data represents a rolling 12 month average, updated every financial quarter.
95% confidence interval of percent figure (+/-).

Data Source: NOMIS - <https://www.nomisweb.co.uk/>

Useful Links



Commentary

Employment rates in all districts in Cambridgeshire higher than national and regional comparisons and have stayed approximately stable since the previous quarter.

Indicator 197: Cambridgeshire Libraries Events and Events Attendance

[Return to Index](#)

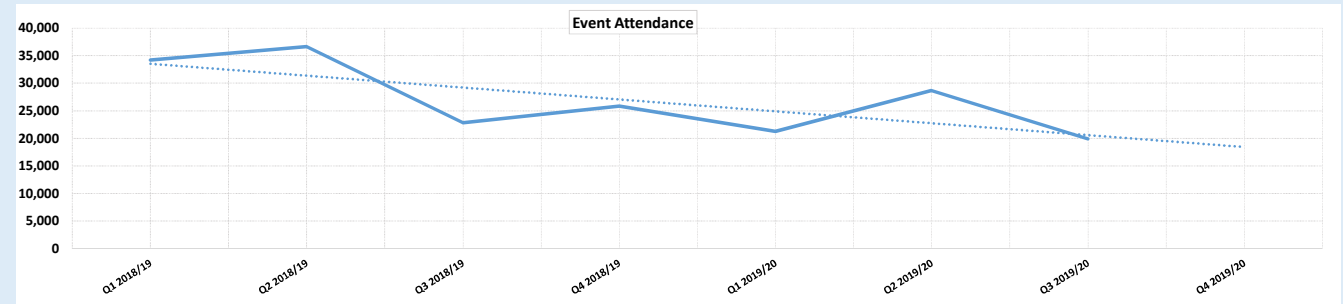
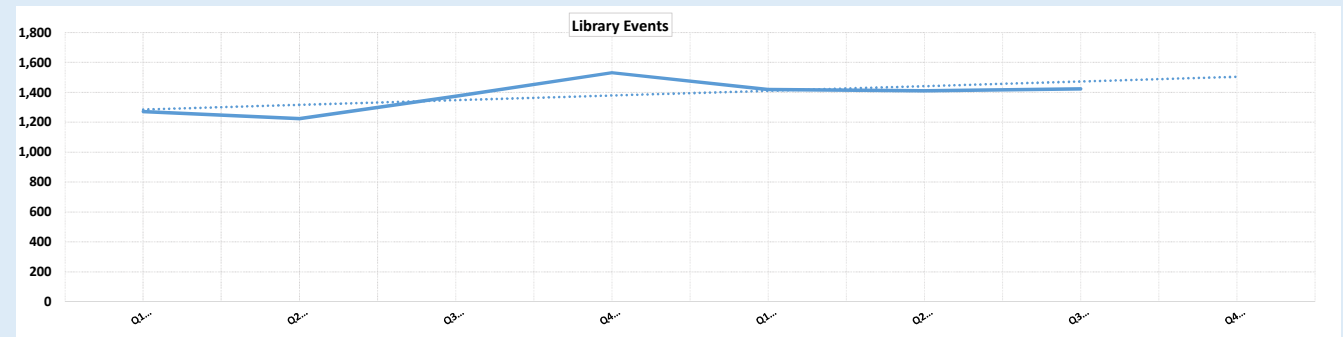
March 2020

	Direction for Improvement	Current Quarter	Previous Quarter	Change in Performance
No. Events	↑	1,423	1,410	Improving

Attendance	↑	19,913	28,704	Declining
------------	---	--------	--------	-----------

Indicator Description

Events (activities) and attendance data includes both adults' and children's events.

Useful Links**Commentary**

Performance is in line with quarterly performance expectations i.e. Q2 covers the school holiday period and is higher to reflect our summer offering including the Summer Reading Challenge (SRC). Cambridgeshire has one of the highest levels of participation in the SRC in the Eastern Region.

Indicator 198 : The Rate of Repeat Referrals to the Independent Domestic Violence Advocacy (IDVA) Service

[Return to Index](#)

March 2020

Target	Direction for Improvement	Current Quarter	Previous Quarter	Change in Performance
Contextual	↓	36%	37%	Improving

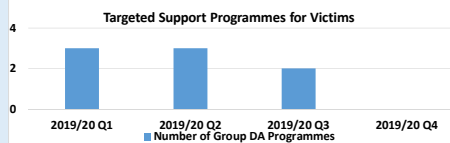
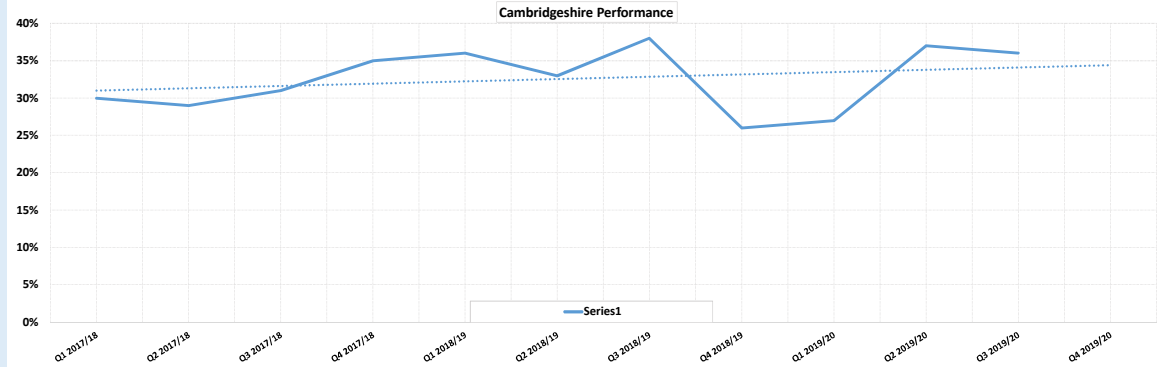
RAG Rating

Contextual

Indicator Description

Note: The repeat referral rate is a combined Cambridgeshire and Peterborough rate from 2017/18 onwards.

The DA programmes refers only to 'RISE' from 2019/20 Q3.

**Targeted Support Programmes for Victims**

2018/19 Total 8 (4 x IMPACT courses for young people and 4 RISE courses)

Commentary

The group offer of domestic abuse programmes offered through the local authority has reduced to better fit with available capacity to deliver, and following the resolution of issues with appropriate referrals. The only course offered from quarter 3 onwards is the RISE programme that has been developed through Early Help, and plans are in place to increase delivery of this course across the whole of Cambridgeshire. Current delivery has focused in Hunts and Fenland.

IDVA Key Issues and Information: 3 month trial of MARAC threshold increase to 17 ticks on the DASH runs 1st January to 31st March 2020. IDVA Service will continue to triage DASH forms with 14 -16 ticks but client consent is required for these.

Useful Links

Indicator 199: The Number of Referrals and the Number of Repeat Referrals to the Domestic Violence Perpetrator Panel

[Return to Index](#)

March 2020

Target	Direction for Improvement	Current Quarter	Previous Quarter	Change in Performance
Contextual	↓	67.00	90.00	Improving

RAG Rating

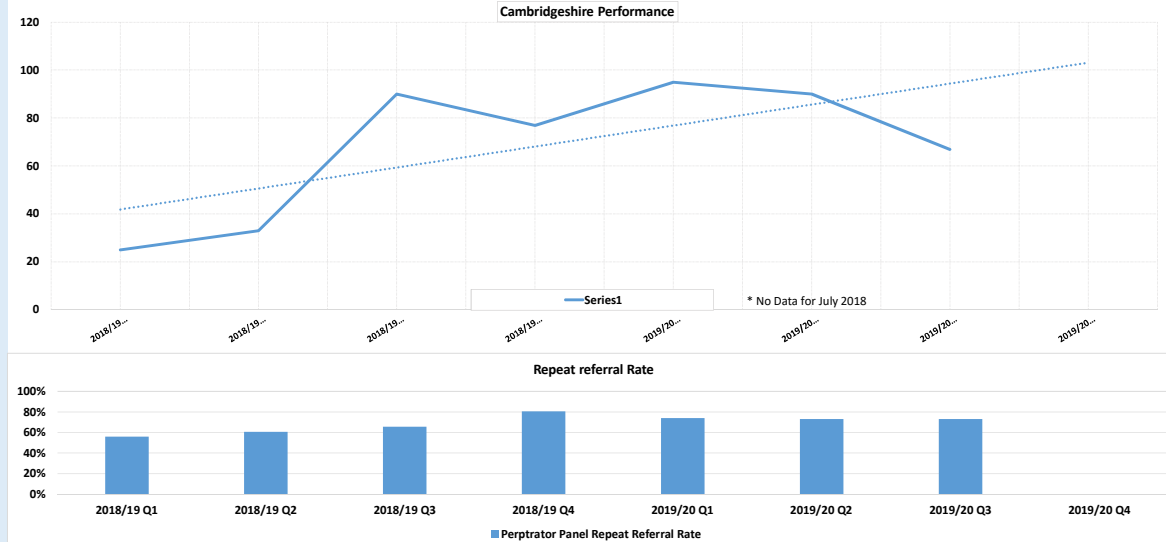
Contextual

Indicator Description

Note: No. of Repeat Referrals = total number of referrals - new referrals.

Repeat Referral % = No. of Repeat Referrals/Total Referrals (cases heard)

The perpetrator panel does not record and recognise repeat referrals in the same way as other services. Cases remain on the agenda for the panel until a decision is made that they no longer need to be discussed.

Useful Links**Commentary**

The perpetrator panel is currently being reviewed to ensure its effectiveness. Currently the number of cases being referred has meant that the panel in its current format has struggled to meet the demand.

Target	Direction for Improvement	Current Month	Previous Month	Change in Performance
	↑			
RAG Rating				

Indicator Description

Useful Links

New Measure in Development

Commentary