

CDM Residual Risks

In addition to the hazards/ risks normally associated with the types of works detailed on this drawing, please note the following:

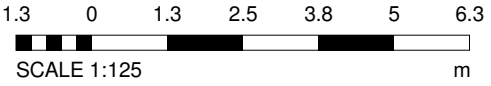
Construction

Maintenance/ Cleaning

1 No unusual risks.

Decommissioning/ Demolition

It is assumed that all works will be carried out by a competent contractor working, where appropriate, to an approved method statement.



Materials Legend

- ① Facing brickwork
- ② Timber weather boarding
- ③ Render finish (colour 1)
- ④ Render finish (colour 2)
- ⑤ Standing seam roof
- ⑥ Metal framed window with factory painted finish
- ⑦ Metal door painted to match windows

General Materials Notes

High performance polymeric sheet membrane to flat roof

Metal gutters, hoppers and downpipes with factory painted finish

Metal copings with factory painted finish

Metal fascias and soffits with factory painted finish

Glazed main entrance canopy

Metal secondary entrance canopies with factory painted finish to fascias and soffits

Metal columns to canopies with factory painted finish

C	PITCHED ROOF MATERIAL REVISED	21/01/14	ZJT
B	MATERIALS LEGEND ADDED	26/11/13	ZJT
A	FIRST PLANNING ISSUE	15/11/13	ZJT
No	Revision	Date	Initis

CAMBOURNE PRIMARY SCHOOL

Drawing  
ELEVATIONS

Client  
CAMBRIDGESHIRE COUNTY  
COUNCIL/KIER

FRANK

SHAW

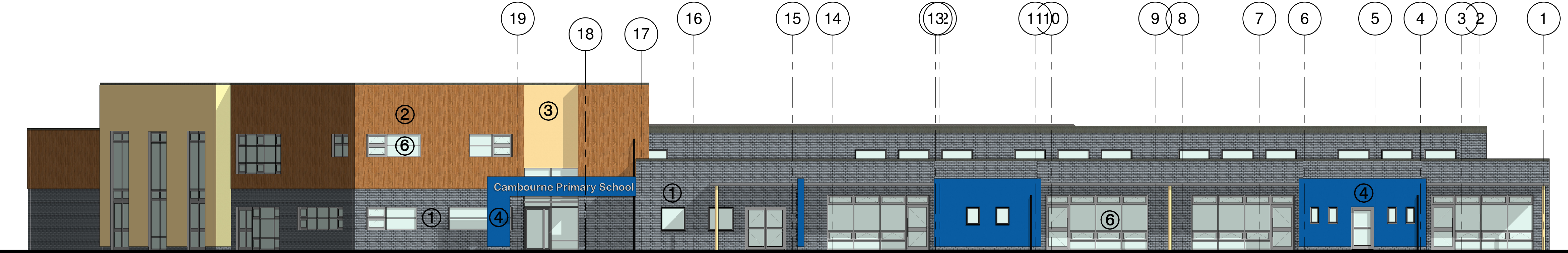
ASSOCIATES

LIMITED

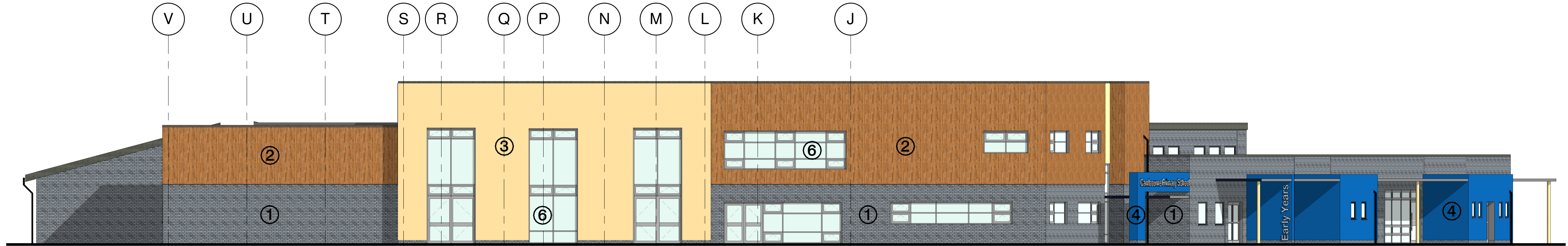
ARCHITECTS

Penmore House Hasland Chesterfield Derbyshire S41 0SU  
Tel 01246 233255 Fax 01246 220009 www.frankshawassociates.co.uk

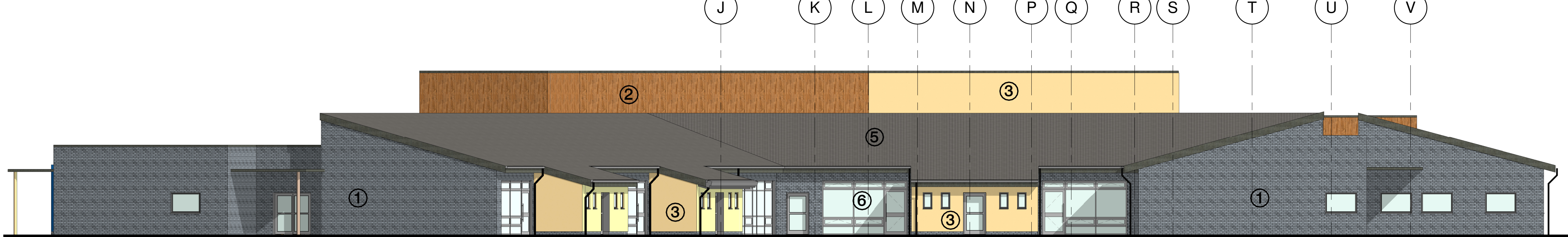
Scale	Date	Drawn/Checked
1 : 125@A1	11/12/13	ZJT/CH
Job Number	Dwg No	Rev
12047	P07	C



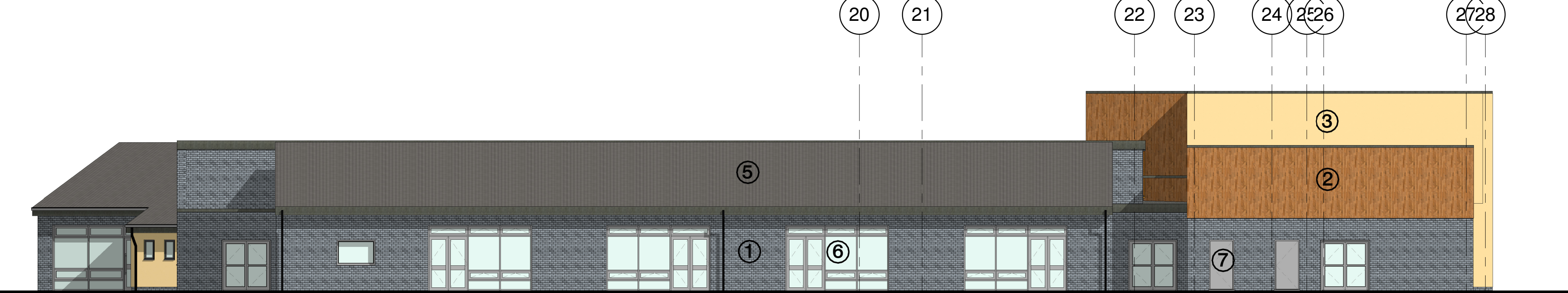
North West  
1 : 125



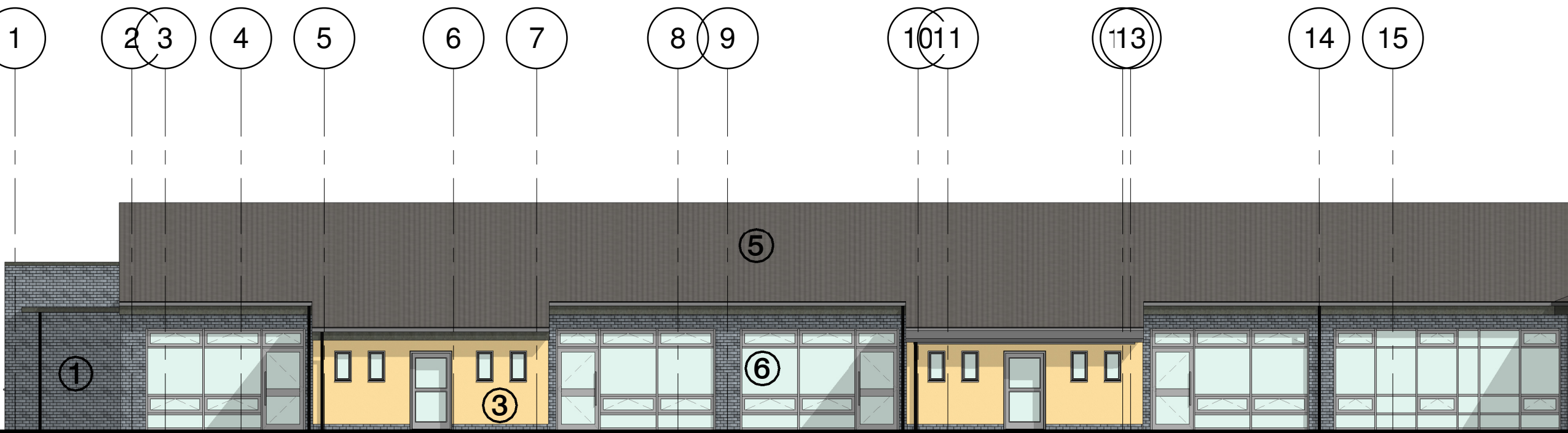
North East  
1 : 125



South West  
1 : 125



South East  
1 : 125



Courtyard South East  
1 : 125



Courtyard North West  
1 : 125