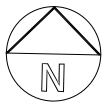


Continuation of  
planning red line  
from above.



A TO SUIT HIGHWAYS AMENDMENTS 09/05/14 AS  
No Revision Date Initials

Job  
ISLE OF ELY PRIMARY SCHOOL

Drawing  
SITE LOCATION PLAN

Client  
CAMBRIDGESHIRE COUNTY COUNCIL  
KIER

FRANK  
SHAW  
ASSOCIATES  
LIMITED  
ARCHITECTS

Penmore House Hasland Chesterfield Derbyshire S41 0SU  
Tel 01246 233256 Fax 01246 220099 fsachest@globalnet.co.uk

Scale	Date	Drawn/Checked
1:2500 @ A3	09/05/14	HB
Job No	Dwg No	Rev
12040	P01	A