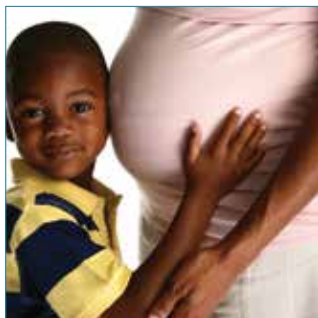


# Fit for the Future

Shaping Local NHS Services



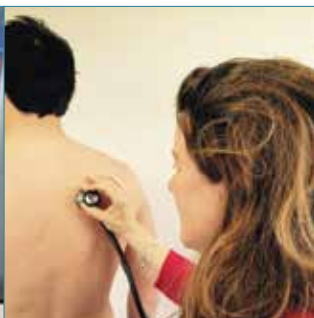
Cambridgeshire and Peterborough Health System  
Transformation Programme



**Children's and  
Maternity Services**



**Planned Care (Elective)**  
both in hospital and the community



**Care delivered through  
GP surgeries (Primary Care)**



**Mental Health  
Services**



**Emergency and Urgent Care  
(Non elective)**



**Older People's  
Services**

June 2015

**NHS**

## What is the Health System Transformation Programme about?

The Cambridgeshire and Peterborough health system has been identified as one of England's 11 most challenged health economies.

Money is short and if we do not change our health system substantially, then we face a funding shortfall of at least £250 million by 2019.

This will make it harder to deliver good quality care for everyone who needs it.

Cambridgeshire and Peterborough Clinical Commissioning Group (CCG), which plans, organises and buys most NHS-funded healthcare, and the providers of local hospital and community healthcare are working together for the benefit of the whole local NHS healthcare system.

They have joined together under the System Transformation Programme to look at shaping a sustainable health system fit for the future.

Peterborough City Council and Cambridgeshire County Council are also part of the programme, as are local Healthwatch organisations.

The Cambridgeshire and Peterborough System Transformation Programme is looking at all hospital-based, GP and community healthcare services in Cambridgeshire and Peterborough.

It is particularly focussing on the following areas of care:

- Children's and maternity services
- Mental health services
- Care delivered through GP surgeries
- Planned care (both in hospital and in the community)
- Emergency and urgent care.

It's also taking into account the improvements expected to take place in older people's (over 65s) healthcare under the innovative Integrated Older People's and Adult Community Services contract being delivered by UnitingCare.

Prevention is key to the programme with everyone having a role in helping to reduce demand on our health services.



The work of the programme also fits in with NHS England's recently published (October 2014) Five Year Forward View.


The Five Year Forward View recognises that the world has changed and health services need to evolve to meet the challenges NHS health services face.

  
**Cambridgeshire and Peterborough**  
*Clinical Commissioning Group*

**Cambridgeshire and Peterborough**   
NHS Foundation Trust

**Cambridgeshire Community Services**   
NHS Trust

**Cambridge University Hospitals**   
NHS Foundation Trust

**East of England Ambulance Service**   
NHS Trust

## What are the issues the local health system faces?

If we do not change our health system substantially, we face a funding shortfall of at least £250 million by 2019. This will make it harder to deliver good quality care for everyone who needs it.

But it's not all about the money:

- a. the health needs of our population are changing
- b. demand for health services continues to increase
- c. GP services (primary care) are not sustainable in their current form
- d. we have a mismatch between capacity and demand (where services are

currently delivered and where they are needed both now and in the future). This affects all parts of our local health system. It significantly affects our hospitals' ability to meet demand

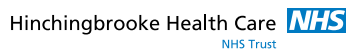
- e. there are gaps in some parts of the workforce across the Cambridgeshire and Peterborough health system
- f. in addition, we have service gaps in mental health and services for children.

If all organisations work together to address these issues, we believe people will be healthier and need less healthcare.

## What would happen if we didn't make any changes?

If we do not plan to change our health system, we are likely to see:

- funding shortfalls, possibly leading to unplanned service changes over which we have little control
- decreased quality of care and poorer health outcomes for people
- a continued rise in the need for health care
- some General Practices going out of business
- hospitals continuing to experience a rise in emergency admissions
- hospitals finding it harder to undertake planned work (such as scheduled operations)
- a decrease in quality and access performance standards in hospitals, as well as an increase in financial deficits
- an increase in pressure on all parts of the health system and an already stretched workforce.



## Want to know more or become involved?

Visit the System Transformation Programme webpage on the CCG's website at:

[www.cambridgeshireandpeterboroughccg.nhs.uk](http://www.cambridgeshireandpeterboroughccg.nhs.uk)

Look for the System Transformation Programme logo on the homepage.



Fit for the Future NHS  
Cambridgeshire and  
Peterborough



@fitforfuturenhs #fitforfuturenhs

- Join the System Transformation Public Involvement Assembly – a patient/public forum dedicated to encouraging engagement in the System Transformation Programme
- Invite someone from the System Transformation Programme to talk to your community group meeting
- Contact the CCG's Engagement Team on 01223 725304 or email [CAPCCG.engagement@nhs.net](mailto:CAPCCG.engagement@nhs.net)
- Regularly check the System Transformation Programme page on the CCG's website for any planned events.

## Do you work locally for the NHS? Want to know more or become involved?

Contact the CCG's Engagement Team on 01223 725304 or email [CAPCCG.engagement@nhs.net](mailto:CAPCCG.engagement@nhs.net)

This document is also available in other languages, large print, and audio format upon request.

આ દસ્તાવેજ વિનંતી કરવાથી બીજી ભાષાઓ, મોટા છાપેલા અક્ષરો અથવા ઓડિઓ રચનામાં પણ મળી રહેશે.

Su richiesta, questo documento è anche disponibile in altre lingue, in formato a caratteri ingranditi, Braille e audio

Pageidaujant šį dokumentą galima gauti ir kitomis kalbomis, atspausdintą

dideliu šriftu bei garso formatu.

Dokument ten jest na życzenie udostępniany także w innych wersjach językowych, w dużym druku, w alfabecie Braille'a lub w formacie audio.

Mediante solicitação, este documento encontra-se também disponível noutras linguas, num formato de impressão maior, em Braille e em áudio.