

Produced on:

06 December 2019



Corporate Performance Report

Quarter 2

2018/19 financial year

Communities and Partnership Committee

Business Intelligence
Cambridgeshire County Council
business.intelligence@cambridgeshire.gov.uk

Key



Data Item	Explanation
Target / Pro Rata Target	The target that has been set for the indicator, relevant for the reporting period
Current Month / Current Period	The latest performance figure relevant to the reporting period
Previous Month / previous period	The previously reported performance figure
Direction for Improvement	Indicates whether 'good' performance is a higher or a lower figure
Change in Performance	Indicates whether performance is 'improving' or 'declining' by comparing the latest performance figure with that of the previous reporting period
Statistical Neighbours Mean	Provided as a point of comparison, based on the most recently available data from identified statistical neighbours.
England Mean	Provided as a point of comparison, based on the most recent nationally available data
RAG Rating	<ul style="list-style-type: none"> • Red – current performance is off target by more than 10% • Amber – current performance is off target by 10% or less • Green – current performance is on target or up to 4% over target • Blue – current performance is over target by 5% or more • Baseline – indicates performance is currently being tracked in order to inform the target setting process • Contextual – these measures track key activity being undertaken, but where a target has not been deemed pertinent by the relevant service lead
Indicator Description	Provides an overview of how a measure is calculated. Where possible, this is based on a nationally agreed definition to assist benchmarking with statistically comparable authorities
Commentary	Provides a narrative to explain the changes in performance within the reporting period
Useful Links	Provides links to relevant documentation, such as nationally available data and definitions

Indicator 37: Number of visitors to libraries/community hubs - year-to-date

[Return to Index](#)

December 2019

Target	Current Quarter	Previous Quarter	Direction for Improvement	Change in Performance
2,400,000	988,888	485,038	↑	Improving

RAG Rating

R

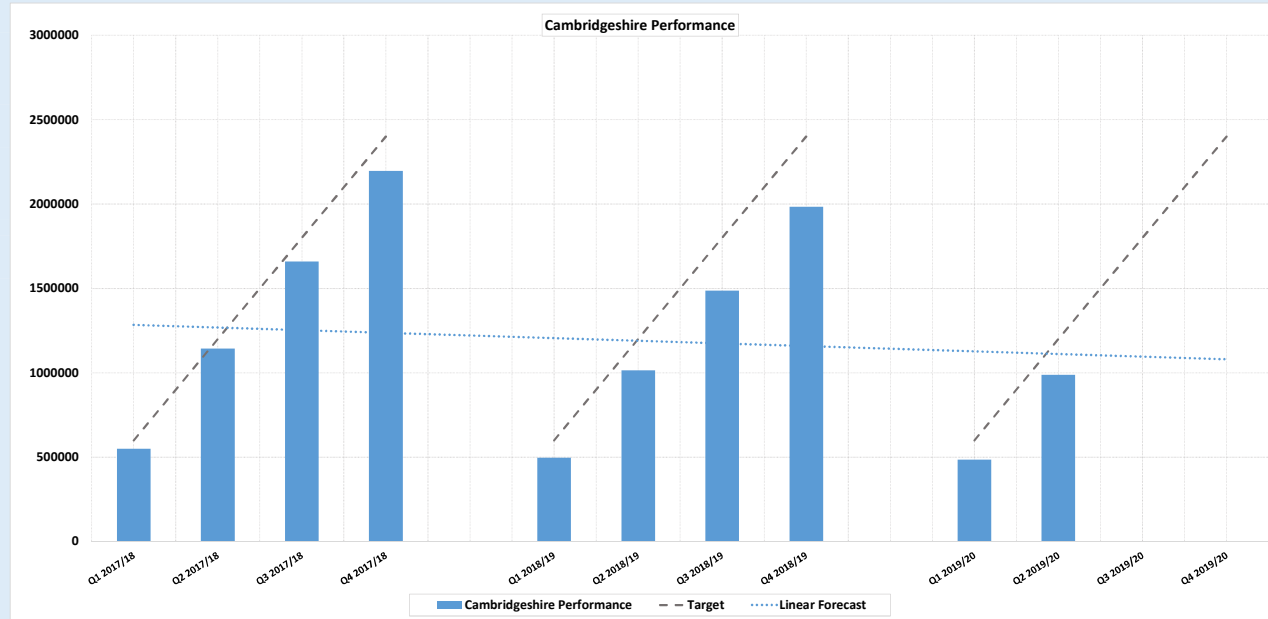
Indicator Description

The indicator is a rolling total, each quarter, of the number of physical visits to Cambridgeshire libraries.

This is a local indicator and therefore there are no statistical neighbour or England comparator data.

Useful Links

LG Inform:

<https://lginform.local.gov.uk/>


Commentary

Recommendation: To change the indicator measure.

On LG Inform there is an library visits indicator collected as part of the Public Library Statistic from CIPFA Statistical Information Services. The indicator is Number of physical visits to libraries per 1,000 population (there is data for each English county local authorities) and therefore could produce some comparator statistics.

Indicator 38: Number of item loans (including eBook loans) – quarterly

[Return to Index](#)

December 2019

Target	Current Quarter	Previous Quarter	Direction for Improvement	Change in Performance
Contextual	544778	511941	↑	Improving

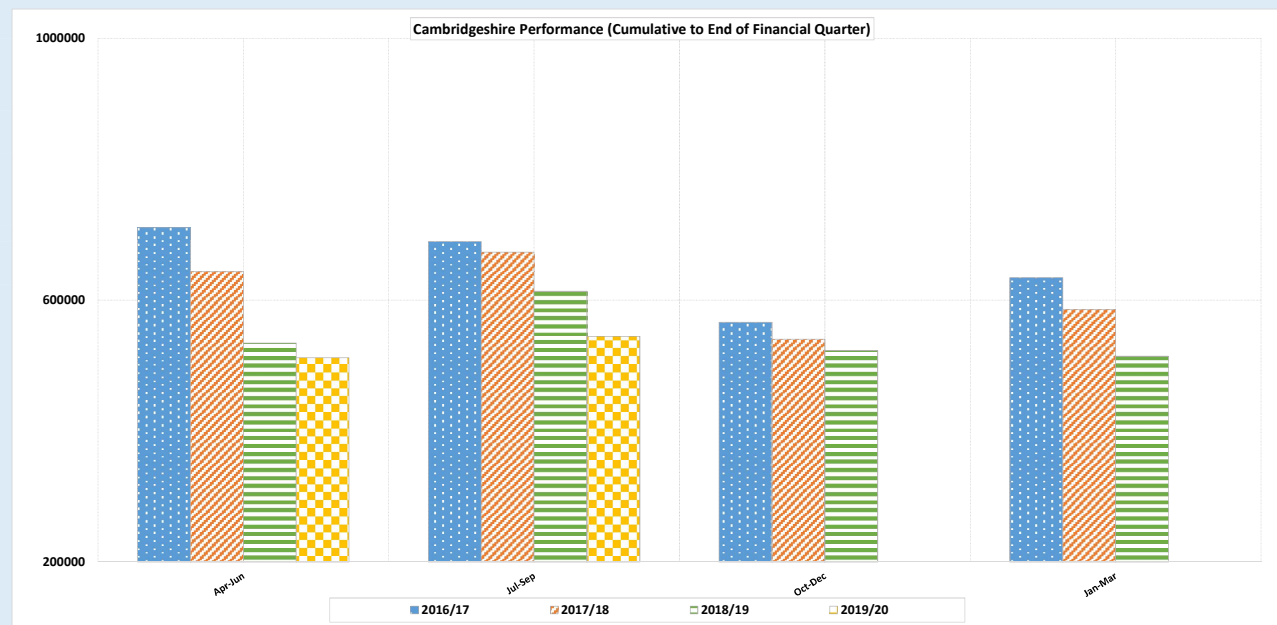
RAG Rating

Contextual

Indicator Description

Useful Links

LG Inform:

<https://lginform.local.gov.uk/>

Commentary

Indicator 197: Cambridgeshire Libraries Events and Events Attendance

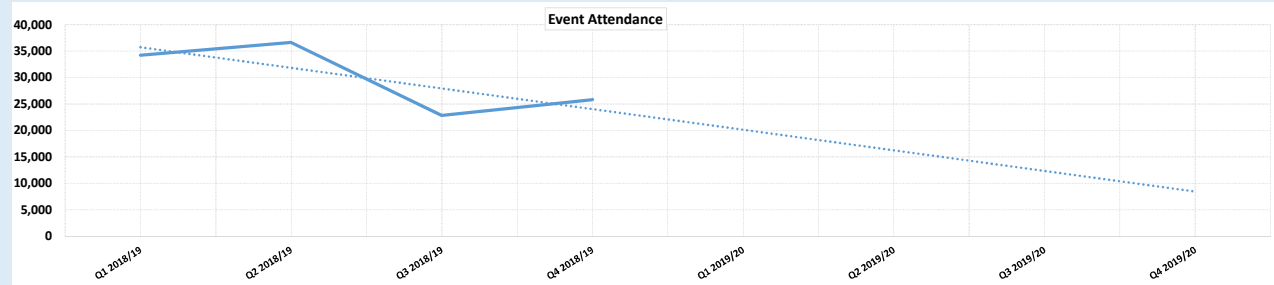
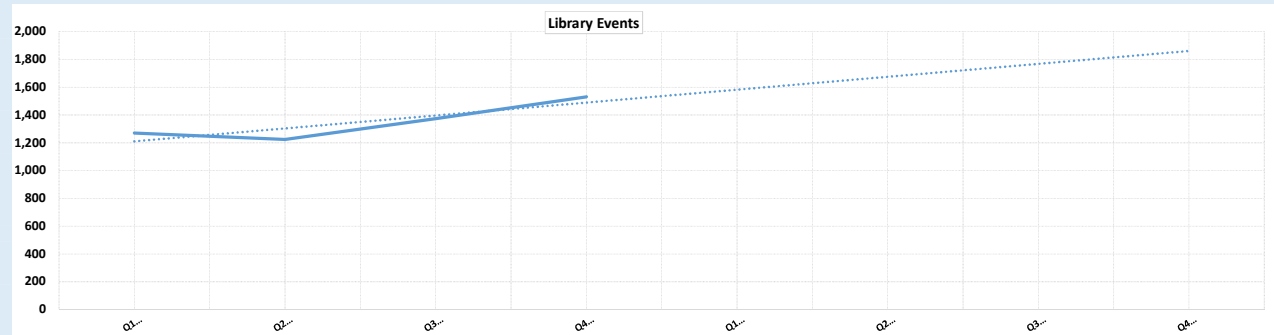
[Return to Index](#)

December 2019

	Current Quarter	Previous Quarter	Direction for Improvement	Change in Performance
No. Events	1,531	1,373	↑	Improving
Attendance	25,833	22,833	↑	Improving

Indicator Description

Useful Links



Commentary

Indicator 198 : The Rate of Repeat Victims to the Independent Domestic Violence Advocacy (IDVA) Service

[Return to Index](#)

December 2019

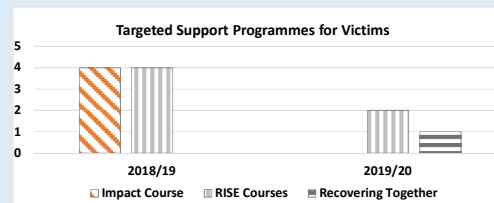
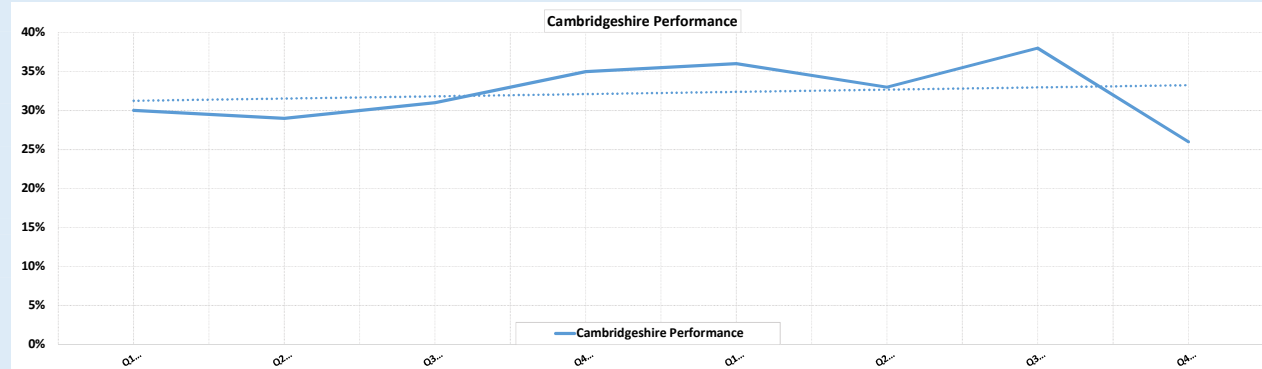
Target	Current Quarter	Previous Quarter	Direction for Improvement	Change in Performance
	36%	38%	↓	Improving

RAG Rating

Contextual

Indicator Description

Note: The repeat victim rate is a combined Cambridgeshire and Peterborough rate from 2017/18 onwards.



Targeted Support Programmes for Victims

2018/19 Total 8 (4 x IMPACT courses for young people and 4 RISE courses)
2019/20 Total 3 to date (2 RISE courses and 1 Recovering Together)

Commentary

Indicator 199: The Number of Referrals and the Number of Repeat Referrals to the Domestic Violence Perpetrator Panel

[Return to Index](#)

December 2019

Target	Current Quarter	Previous Quarter	Direction for Improvement	Change in Performance
	21.00	26.00	↓	Improving

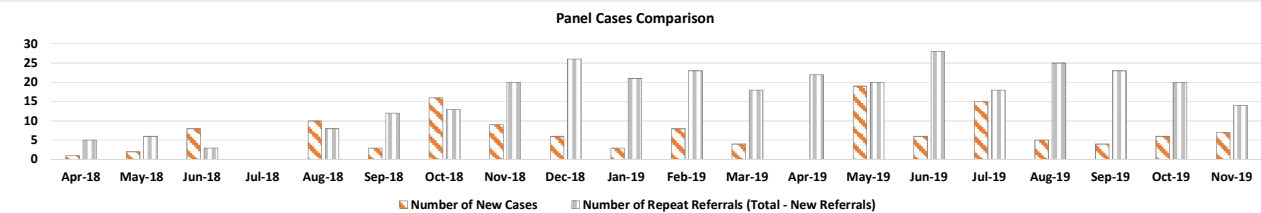
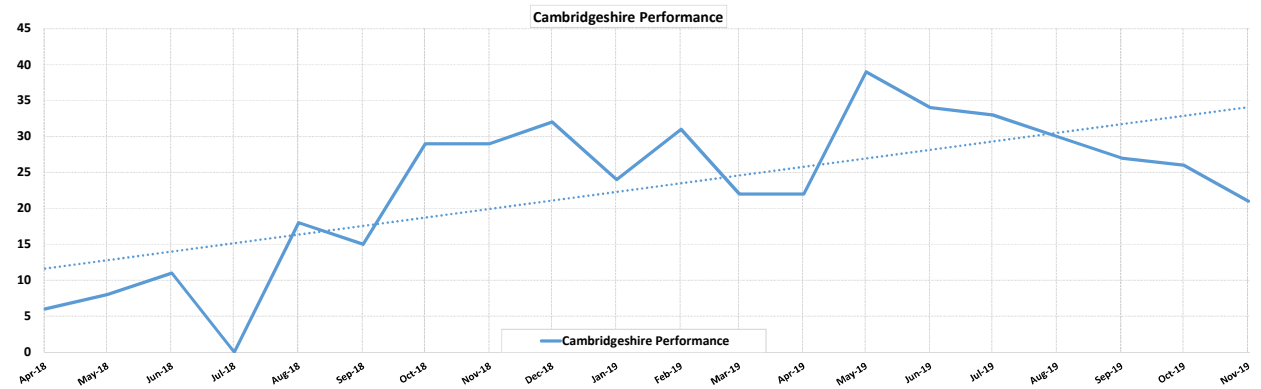
RAG Rating

Contextual

Indicator Description

Note: The 'repeat' referrals = total number of referrals - new referrals. The perpetrator panel does not record and recognise repeat referrals in the same way as other services. Cases remain on the agenda for the panel until a decision is made that they no longer need to be discussed.

Useful Links



Commentary

Indicator 174: Priority 4a - Tackling Hate Crime - Hate Crime Rates Per 100,000 Population (Breakdown by District)

[Return to Index](#)

December 2019

Target	Current Quarter	Previous Quarter	Direction for Improvement	Change in Performance
	31.93	28.07	↓	Declining

RAG Rating

Contextual

Indicator Description

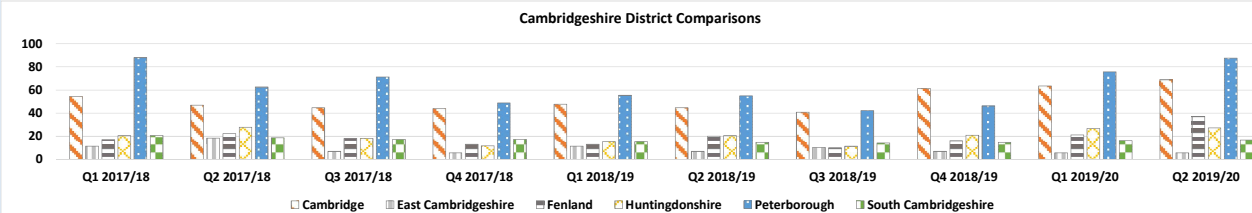
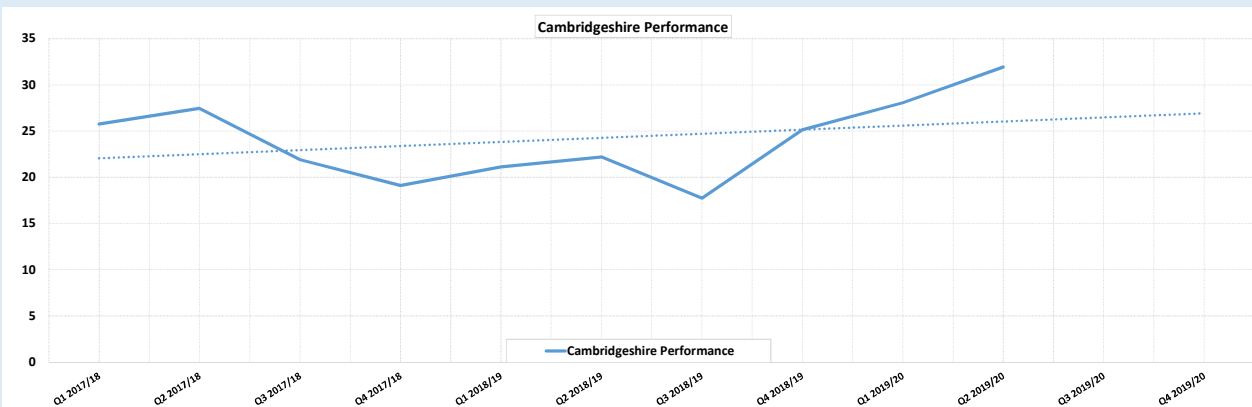
Data has been compiled by Cambridgeshire Research Group from CADET the corporate performance tool supplied by Cambridgeshire Constabulary's Performance Team on 14th November 2019 and is correct as of that date.

In May 2018 Cambridgeshire Constabulary went live with a new IT system called Athena, this means that data on crimes from that date (23rd May 2019) is subject to recording and extraction methods that are not identical to the previous system.

Previous Hate Crime published by Cambridgeshire Research Group may be reported using different time periods and therefore may not be comparable.

Rates have been calculated by using Cambridgeshire County Council Research teams latest local population estimates: Cambridgeshire mid-2015 estimates and Peterborough mid-2017 estimates

Useful Links



Commentary

Indicator 175: Priority 4b - Hate Crimes - Online Reporting via True Vision

[Return to Index](#)

December 2019

Target	Current Month	Previous Month	Direction for Improvement	Change in Performance
	35.00	27.00	↓	Declining

RAG Rating

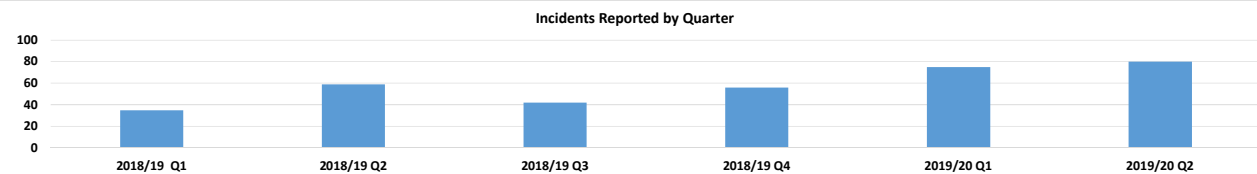
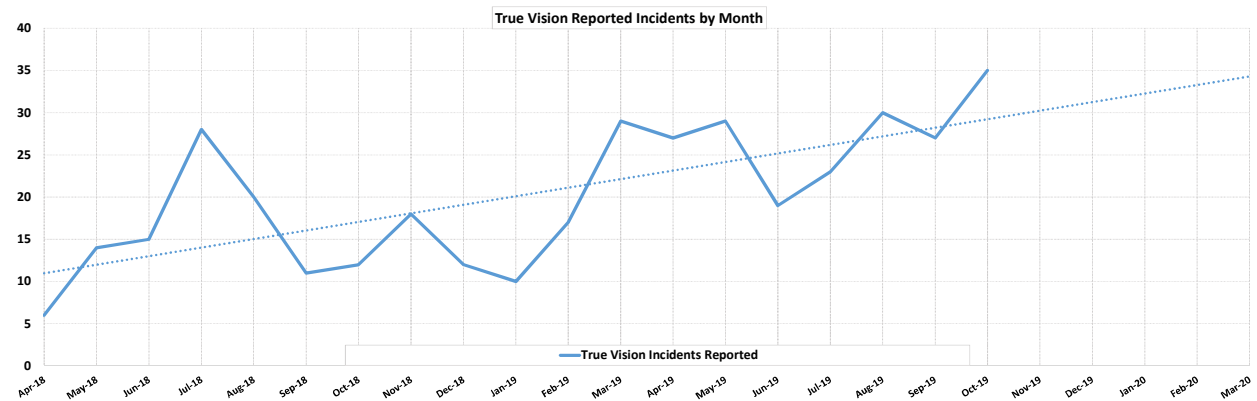
Contextual

Indicator Description

This reported incidents data is collected from True Vision, an online reporting tool used as an alternative to direct reporting via 101 or 999. Third Party Reporting Centres (TPRC) are advised to use True Vision, although it is not known what percentage these centres constitute.

True Vision is intended to facilitate the reporting of Hate Crimes, although not all incidents recorded are consistent with this due to a lack of user understanding.

Useful Links



Commentary

Indicator 136: Number of Learner Registrations as a Proportion of the Contractual Target

[Return to Index](#)

December 2019

Target	Current Month	Previous Month	Direction for Improvement	Change in Performance
467	582		↑	

RAG Rating

B

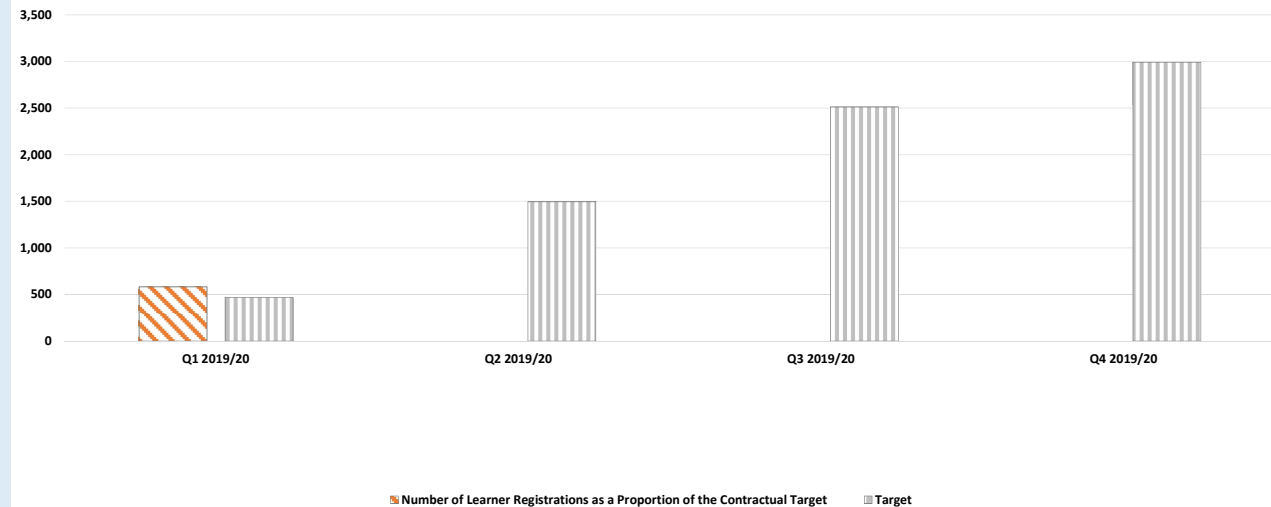
Indicator Description

Note: Q1 commences in August. The current learner registrations data therefore represents the period August to October. The enrolment figure includes sub-contractors and direct delivery. The target and actual figures are cumulative.

This indicator refers to the number of individual learners registered as a proportion of the contractual target. The indicator does not refer to the total number of enrolments, as a single learner can have multiple enrolments and outcomes.

Useful Links

Cambridgeshire Performance



Commentary

Indicator 137: Percentage of Learners Retained as a Proportion of Learner Registration

[Return to Index](#)

December 2019

Target	Current Month	Previous Month	Direction for Improvement	Change in Performance
99%	99%		↑	

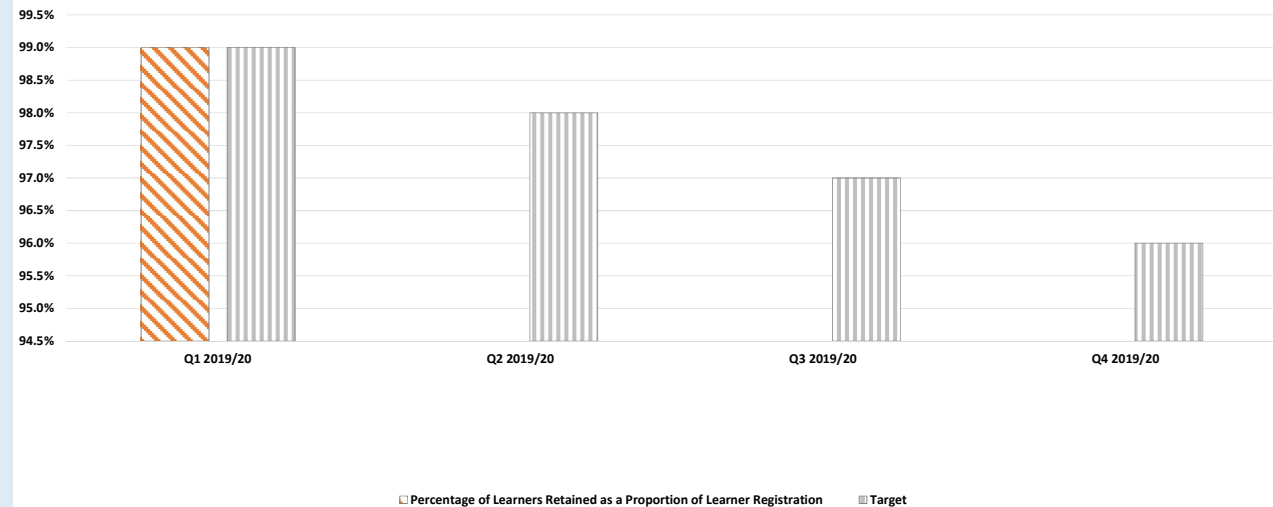
RAG Rating

G

Indicator Description

Note: Q1 commences in August. The current learner retention data therefore represents the period August to October. The enrolment figure used in the percentage includes sub-contractors and direct delivery. The target and actual figures are cumulative.

The retention figure in this indicator refers to the % of individual learners who have been retained out of all Learners and does not refer to the total enrolment numbers. An individual learner can have multiple enrolments and outcomes.

Useful Links**Cambridgeshire Performance****Commentary**

Target	Current Month	Previous Month	Direction for Improvement	Change in Performance
			↑	
RAG Rating				

Indicator Description

Useful Links

New Measure in Development

Commentary

Indicator 178: Priority 7c - Cambridgeshire FSM6 Educational Attainment

[Return to Index](#)

December 2019

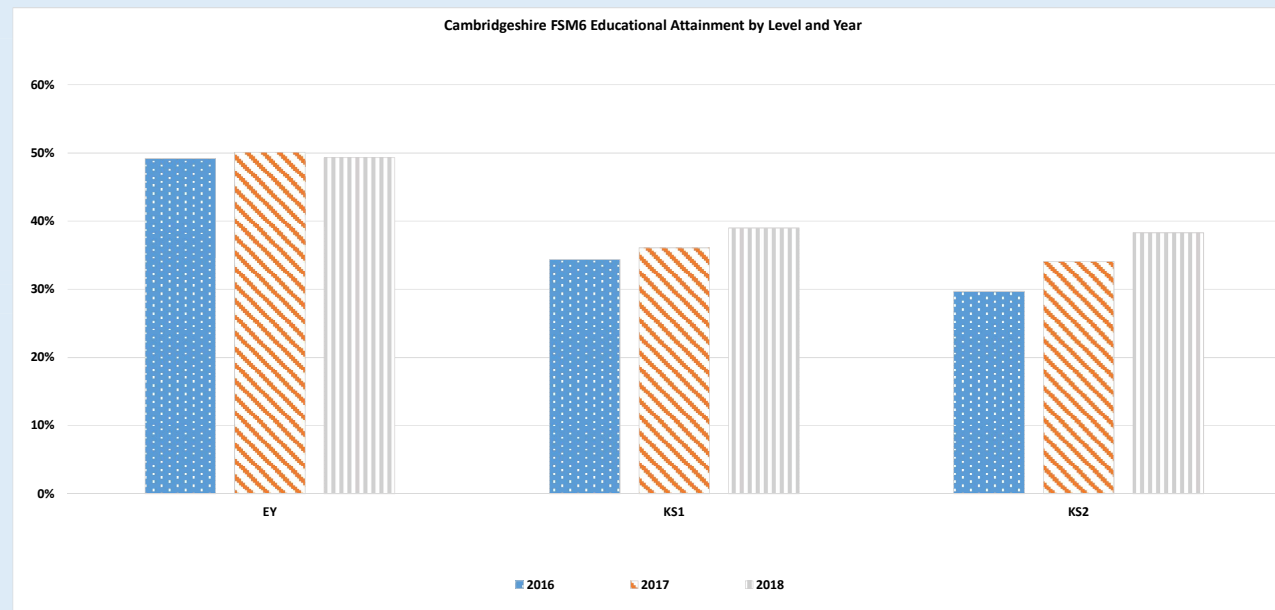
	Current Year	Previous Year	Direction for Improvement	Change in Performance
EY	49.30%	50.10%	↑	Declining
KS1	39.00%	36.10%	↑	Declining
KS2	38.30%	34.10%	↑	Declining

Indicator Description

For Early Years (EY), attainment is measured by the percentage of students who have achieved the expected 'Good Level of Development' (GLD).

For Key Stage 1 (KS1) and Key Stage 2 (KS2), attainment is measured by the percentage of students who have achieved 'Reading, Writing, Maths (RWM) equal or above expected standard'

Statistics Source: Nexus



Commentary

Useful Links

Indicator 179: Priority 7d - Cambridgeshire Employment Rates by District

[Return to Index](#)

December 2019

	Current Quarter	Previous Quarter	Direction for Improvement	Change in Performance
South Cambs	84.50	85.20	↑	Declining
Hunts	79.20	81.60	↑	Declining
Fenland	78.60	76.20	↑	Improving
East Cambs	83.70	81.30	↑	Improving
Cambs City	80.30	78.50	↑	Improving

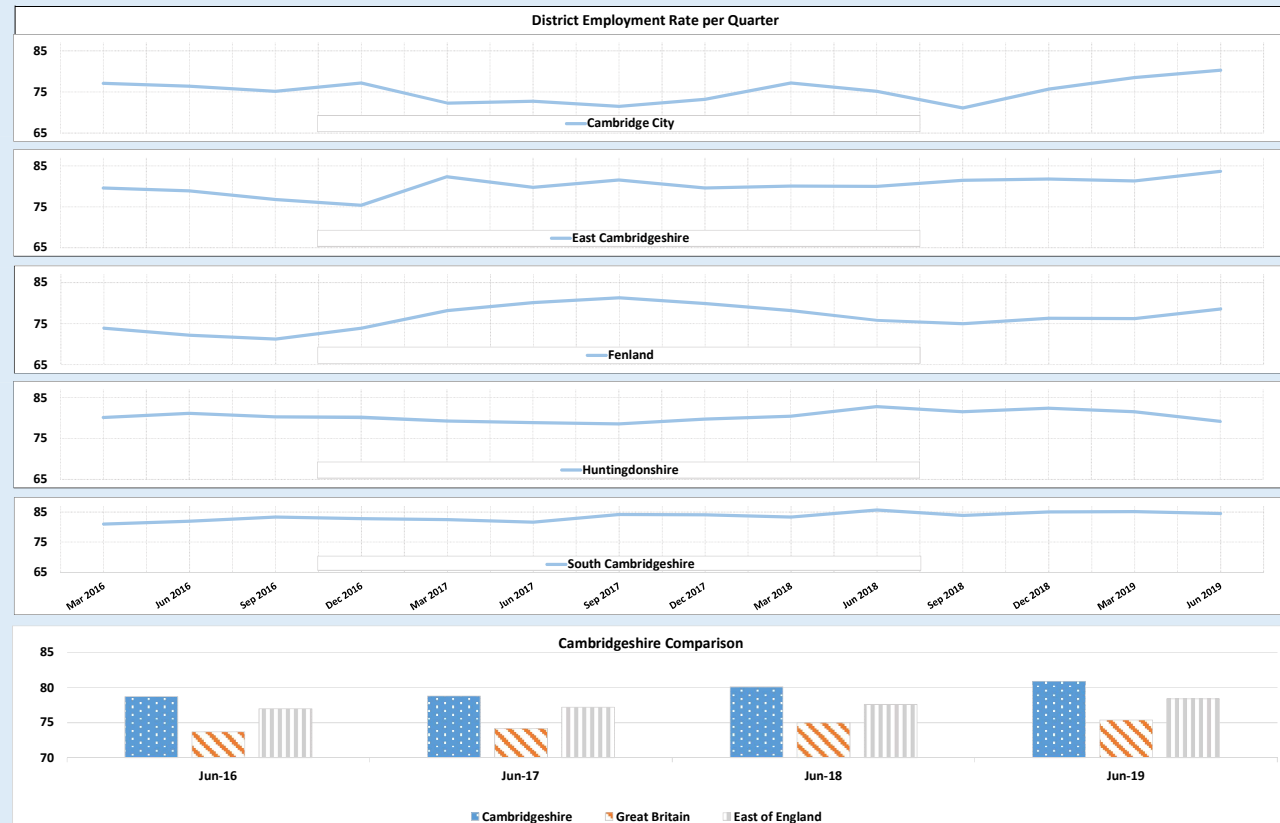
Indicator Description

Data from the annual population survey - 'A residence based labour market survey encompassing population, economic activity (employment and unemployment), economic inactivity and qualifications. These are broken down where possible by gender, age, ethnicity, industry and occupation. Available at Local Authority level and above. Updated quarterly.'

Employment data represents a rolling 12 month average, updated every financial quarter.
95% confidence interval of percent figure (+/-).

Data Source: NOMIS - <https://www.nomisweb.co.uk/>

Useful Links



Commentary

Indicator 176: Priority 7a - Wisbech 2020 Project - Wisbech School Attainment Levels

[Return to Index](#)

December 2019

	Current Year	Previous Year	Direction for Improvement	Change in Performance
EY	61.25%	60.84%	↑	Improving
KS1	47.48%	41.94%	↑	Improving
KS2	41.31%	38.54%	↑	Improving

Indicator Description

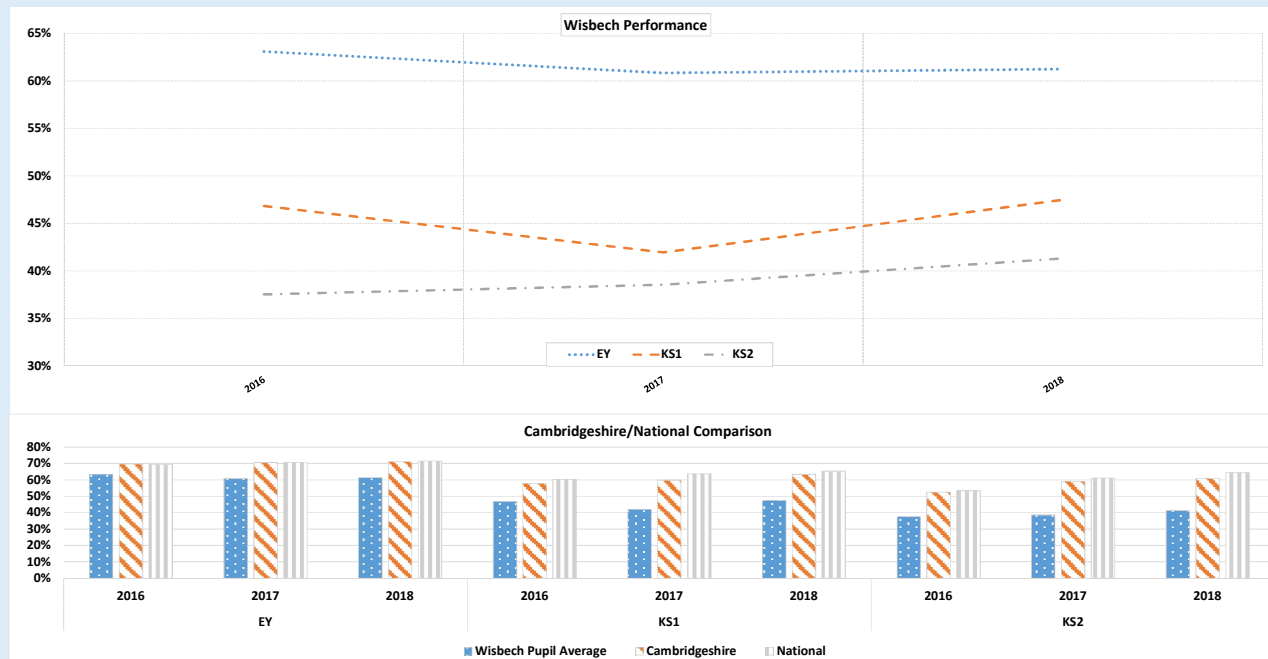
Statistics for Wisbech based on a weighted average by cohort numbers for pupils in the below schools.

Peckover Primary School
Orchards Church Of England Primary
Clarkson Infants School
St Peter's CofE Aided Junior School
The Nene Infant Academy
Ramnoth Junior School
Elm Road Primary School
Elm CofE Primary School
Friday Bridge Community Primary School
Leverington Academy
Beaupre Community Primary School

For EY, attainment is measured by % of students who have achieved the expected 'Good Level of Development' (GLD)

For KS1 and KS2, attainment is measured by % of students who have achieved 'Reading, Writing, Maths (RWM) equal or above expected standard'

Useful Links



Commentary

Indicator 177: Priority 7b - Wisbech 2020 - LAC from Wisbech

[Return to Index](#)

December 2019

Target	Current Year	Previous Year	Direction for Improvement	Change in Performance
	50.00	44.00	↓	Declining

RAG Rating

Contextual

Indicator Description

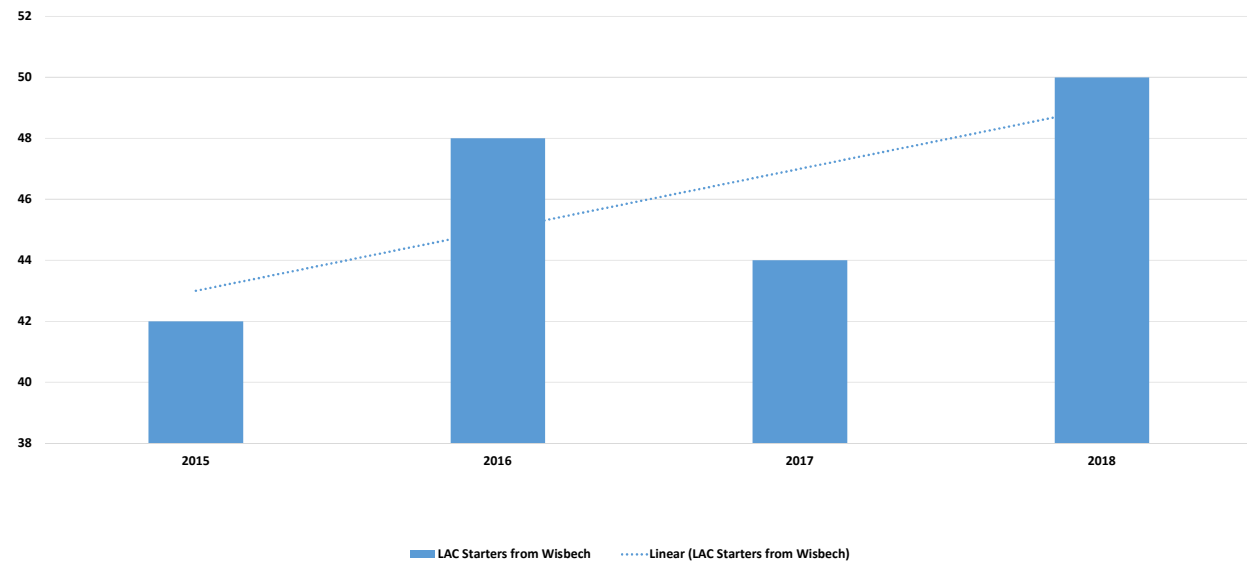
Wisbech LAC data compiled from LAC Return 903 data from years 2015-2018.

Data includes LAC Return entries with an RNE 'S' (Started to be Looked After), and a current home address within the Wisbech Parish.

Useful Links

<http://www.wisbech2020vision.co.uk/>

LAC Starters from Wisbech

**Commentary**