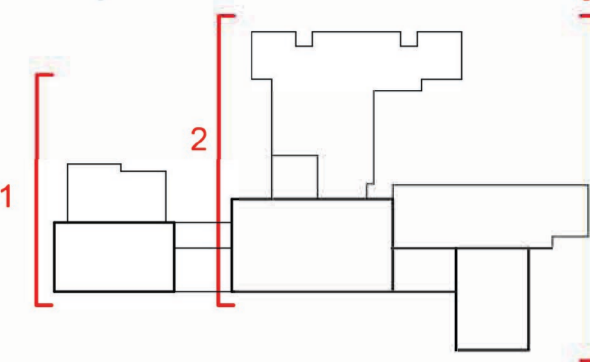
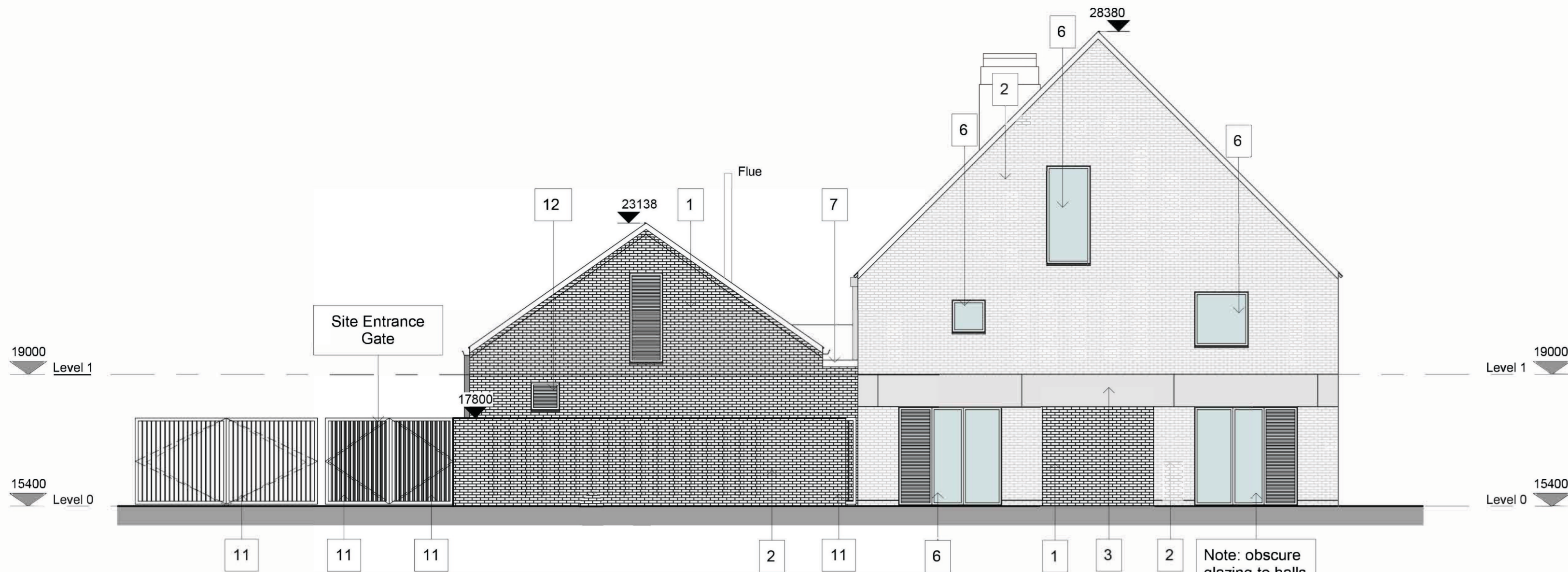


Key Plan

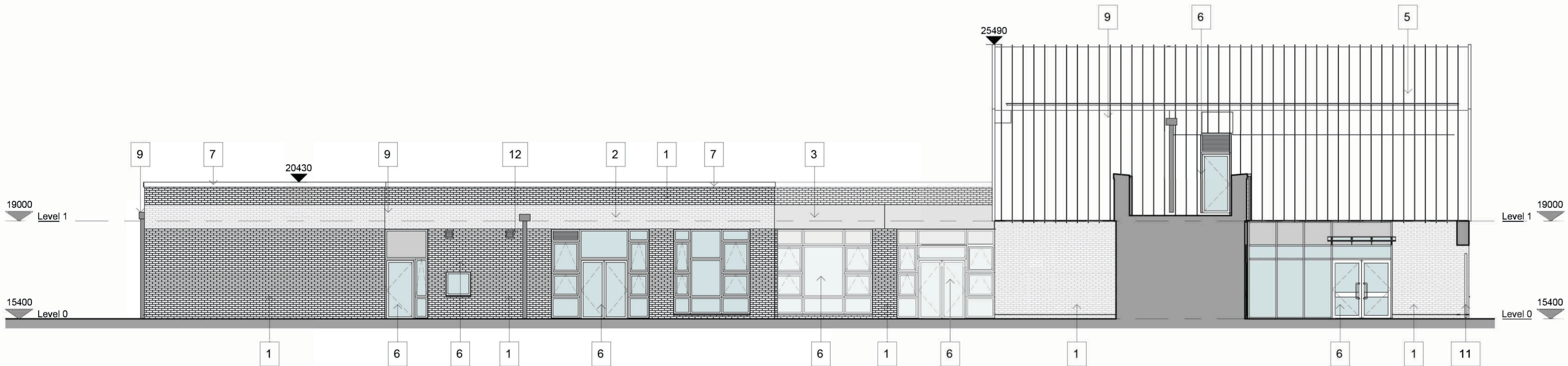


Materials Key

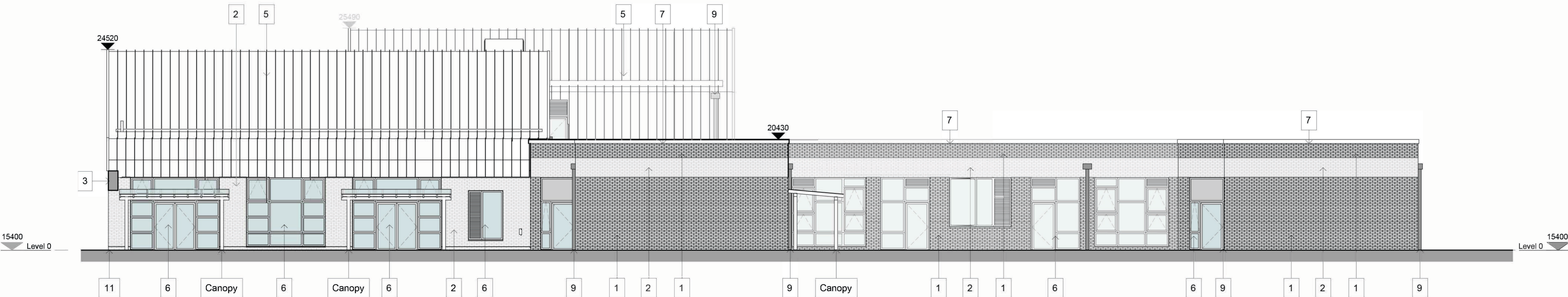
1. Dark brick
2. Light brick
3. Precast concrete / metal panel frieze to match buildings on Market Square
4. Rainscreen cladding panels
5. Standing seam roof / wall cladding
6. Aluminium windows and doors
7. Polyester powder coated aluminium parapet coping
8. Rooflights
9. Polyester powder coated rainwater pipe
10. Rooflights
11. Metal gates and railings
12. Polyester powder coated louvre grille



1
313
West Elevation to Halls
1 : 100



2
313
West Elevation to Teaching Wing
1 : 100



3
313
East Elevation
1 : 100

8	01.07.2020	3 No. extract chimneys	RM
7	20.12.2020	Issue for 2nd Planning Application	MO
6	19.12.2018	Issue for Planning Application	TF
5	12.12.2018	Updated Planning Drawings	AD
4	05.12.2018	Issued for DW11 minutes	AD
3	20.11.2018	Draft Planning Issue	TF
2	14.11.2018	Draft Planning Issue	TF
1	09.11.2018	Draft issue for comment	TF

Rev	Date	Description	Drawn
8	01.07.2020	3 No. extract chimneys	RM
7	20.12.2020	Issue for 2nd Planning Application	MO
6	19.12.2018	Issue for Planning Application	TF
5	12.12.2018	Updated Planning Drawings	AD
4	05.12.2018	Issued for DW11 minutes	AD
3	20.11.2018	Draft Planning Issue	TF
2	14.11.2018	Draft Planning Issue	TF
1	09.11.2018	Draft issue for comment	TF

r h partnership architects
94 Chesterton Road Cambridge CB4 1ER
T 01223 316309
www.rhpartnership.co.uk
cambridge@rhpartnership.co.uk

Project
Wing Primary School

Drawing
General Arrangement
Elevations Sheet 3

Project	originator	vol	level	type	role	number	revision
WING-RHP-PS-ZZ-DR-A-313							8

Scales	RHP Project	First Issued	Drawn	Chkd
1 : 100@A1	P0608	09-11-2018	TF	KM

Status	Suitability
Planning	S2