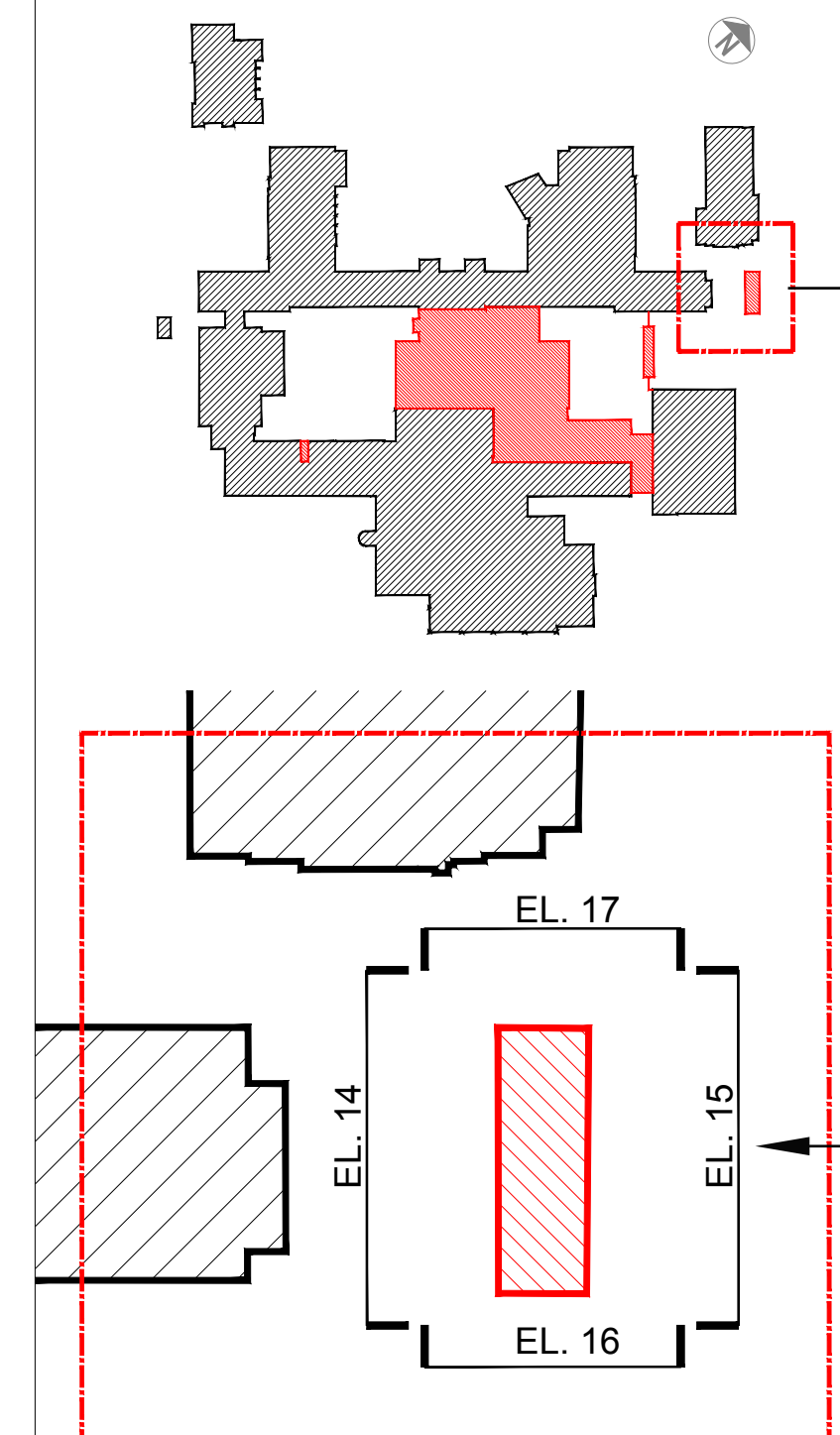


**Materials:**

- 01. PPC aluminum parapet capping
- 02. Facing brickwork
- 03. Larch framed, ledged and braced timber gates
- 04. Larch louvred doors

|  |
|--|
| <b>SAFETY, HEALTH AND ENVIRONMENTAL<br/>INFORMATION</b>  |
| In addition to the hazards/risks normally associated with the types of work detailed on this drawing, note the following:              |
| <b>CONSTRUCTION</b>  |
|  |
| <b>MAINTENANCE/CLEANING</b>  |
|  |
| <b>DECOMMISSIONING/DEMOLITION</b>  |
|  |
| It is assumed that all works will be carried out by a competent contractor working, where appropriate, to an approved method statement |

KEY PLAN:



EXISTING ELEVATION

PROPOSED ELEVATION

Datum Line  
+10,000.00mm

15,130.40

Datum

**B** PROPOSED ELEVATION 15  
A4306 1:50

PROPOSED ELEVATION

EXISTING ELEVATION

02 04 01



01 02

+15,130.40

+15,130.40

Figure 1: Elevation Profile. The diagram illustrates the elevation profile of a structure. It shows a cross-section with a central proposed element (PROP. EL.) flanked by existing ground levels (EXISTING ELEVATION). The profile is defined by a series of points connected by lines, with a datum line at +10,000.00mm.

Diagram illustrating the elevation comparison between the proposed elevation (PROP. EL.) and the existing elevation (EXISTING ELEVATION). The diagram shows a horizontal line representing the datum line at +10,000.00mm. The proposed elevation (PROP. EL.) is shown as a shaded area, and the existing elevation (EXISTING ELEVATION) is shown as a white area. The diagram indicates that the proposed elevation is higher than the existing elevation.

|   |           |                |  |       |           |   |         |           |             |            |           |  |
|---|-----------|----------------|--|-------|-----------|---|---------|-----------|-------------|------------|-----------|--|
|   |           |                |  |       |           |   |         |           |             |            |           |  |
|   |           |                |  |       |           |   |         |           |             |            |           |  |
|   |           |                |  |       |           |   |         |           |             |            |           |  |
|   |           |                |  |       |           |   |         |           |             |            |           |  |
|   |           |                |  |       |           |   |         |           |             |            |           |  |
|   |           |                |  |       |           |   |         |           |             |            |           |  |
|   |           |                |  |       |           |   |         |           |             |            |           |  |
|   |           |                |  |       |           |   |         |           |             |            |           |  |
|   |           |                |  |       |           |   |         |           |             |            |           |  |
| PL-1  | 21.07.17  | PLANNING ISSUE |  |       |           |   |         | LS        | JH          | RC         |           |  |
| Rev.  | Date      | Description    |  |       |           |   |         | By        | Ckd/d       | App'd      |           |  |
| Drawing Status  |           |                |  |       |           |   |         |           | Suitability |            |           |  |
| FIT FOR PLANNING  |           |                |  |       |           |   |         |           | S7          |            |           |  |
|  |           |                |  |       |           | 4th Floor, The Octagon<br>27 Middleborough<br>Colchester, Essex<br>England<br>CO1 1TG<br><br>Tel: +44 (0)1206 732000<br>Fax: +44 (0)1206 732020<br><a href="http://www.atkinsglobal.com">www.atkinsglobal.com</a> |         |           |             |            |           |  |
| Copyright © Atkins Limited (2015)   |           |                |  |       |           |   |         |           |             |            |           |  |
| Client  |           |                |  |       |           |   |         |           |             |            |           |  |
|  |           |                |  |       |           | Cambridgeshire<br>County Council  |         |           |             |            |           |  |
| Project Title   |           |                |  |       |           |   |         |           |             |            |           |  |
| CHESTERTON COMMUNITY<br>COLLEGE   |           |                |  |       |           |   |         |           |             |            |           |  |
| Drawing Title   |           |                |  |       |           |   |         |           |             |            |           |  |
| PROPOSED<br>ELEVATIONS / SECTIONS<br>Sheet 7 of 7                                     |           |                |  |       |           |   |         |           |             |            |           |  |
| Scale   | Designed  |                |  | Drawn |           |   | Checked |           |             | Authorised |           |  |
| 1:100   | JH        |                |  | JH/LS |           |   | JH      |           |             | RC         |           |  |
| Original Size   | Date      | Date           |  |       | Date      |   |         | Date      |             |            | Date      |  |
| A1  | July 2017 | July 2017      |  |       | July 2017 |   |         | July 2017 |             |            | July 2017 |  |
| Drawing Number  |           |                |  |       |           |   |         |           | Revision    |            |           |  |
| 5138389-ATK-Z1-ZZ-EL-A-306  |           |                |  |       |           |   |         |           | PL.1        |            |           |  |