













Cambridgeshire and Peterborough Minerals and Waste Local Plan

Adopted Amendments to the Policies Map

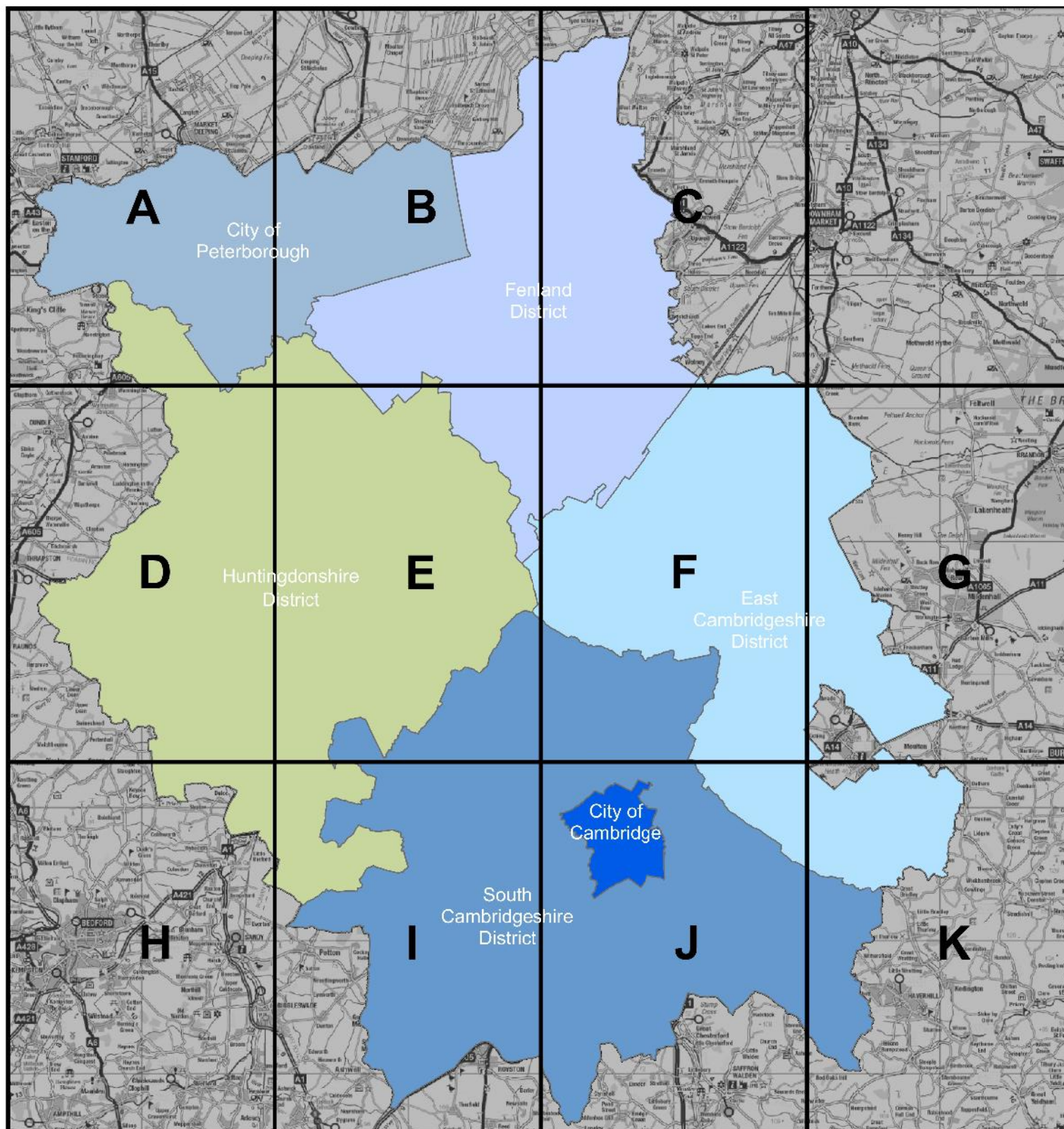
July 2021

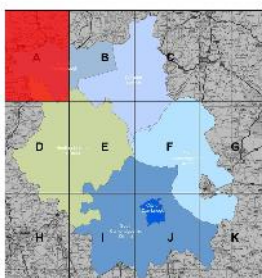
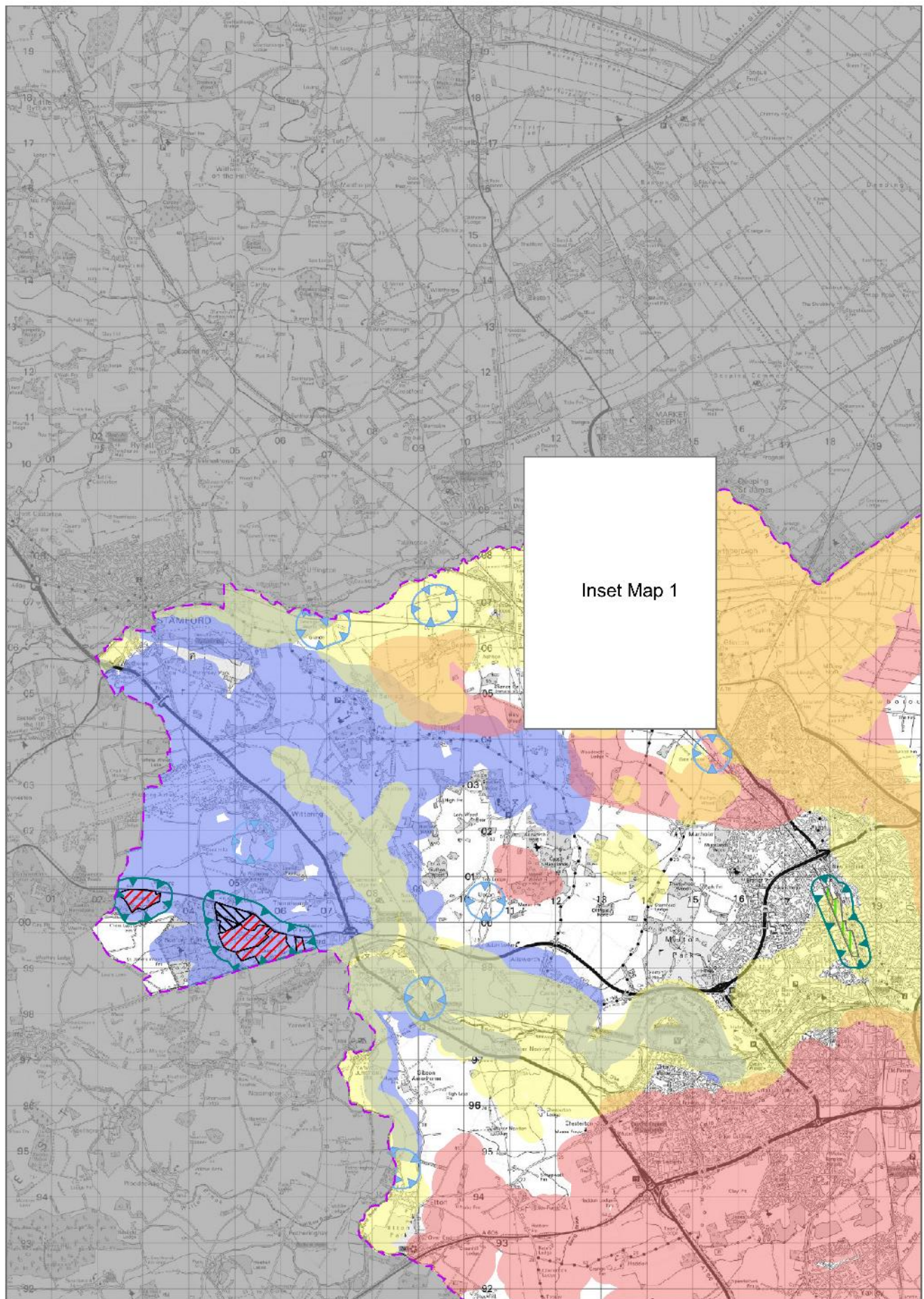
Map Key

	MAA – Mineral Allocation Area
	MDA – Mineral Development Area
	WMA – Waste Management Area
	TIA – Transport Infrastructure Area
	WRA – Water Recycling Area
	CA – Consultation Area (WRA)
	CA – Consultation Area (MAA, MDA, WMA, TIA)
	MSA – Mineral Safeguarding Area (Brickclay)
	MSA – Mineral Safeguarding Area (Chalk)
	MSA – Mineral Safeguarding Area (Limestone)
	MSA – Mineral Safeguarding Area (Sand and Gravel)
	Plan Area Boundary

This document accompanies the adopted Cambridgeshire and Peterborough Minerals and Waste Local Plan (CPMWLP), adopted in July 2021. It is not the official 'Policies Map' for the area, but instead identifies the changes to the Policies Map that have arisen because of the adoption of the CPMWLP. The allocations and other notations identified on the maps within this document are automatically (from the date of CPMWLP adoption) included on the official 'Policies Map' of each district-based Council in Cambridgeshire and Peterborough. All previous Minerals and Waste related allocations or notations arising from earlier (and now superseded) Minerals and Waste Local Plans are, at the same time, automatically deleted from each of the district-based Policies Maps.

It should be noted that maintaining and keeping up-to-date the individual district-based Policies Maps for the CPMWLP area is the responsibility of each district council in the CPMWLP area. Each district-based Policies Map illustrates geographically the application of the policies in the adopted 'development plan' for that district area, with the 'development plan' comprising all Local Plans (district based Local Plan(s) and the CPMWLP), plus any Neighbourhood Plans. Please contact the applicable district-based council for their latest Policies Map, though there may be some delay by each district-based council publishing updated versions of their Policies Map, in pdf or hard copy form, to take account of the changes arising from the now adopted CPMWLP.





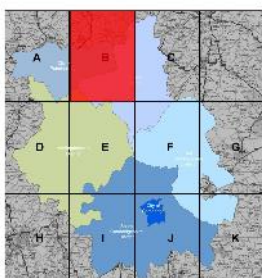
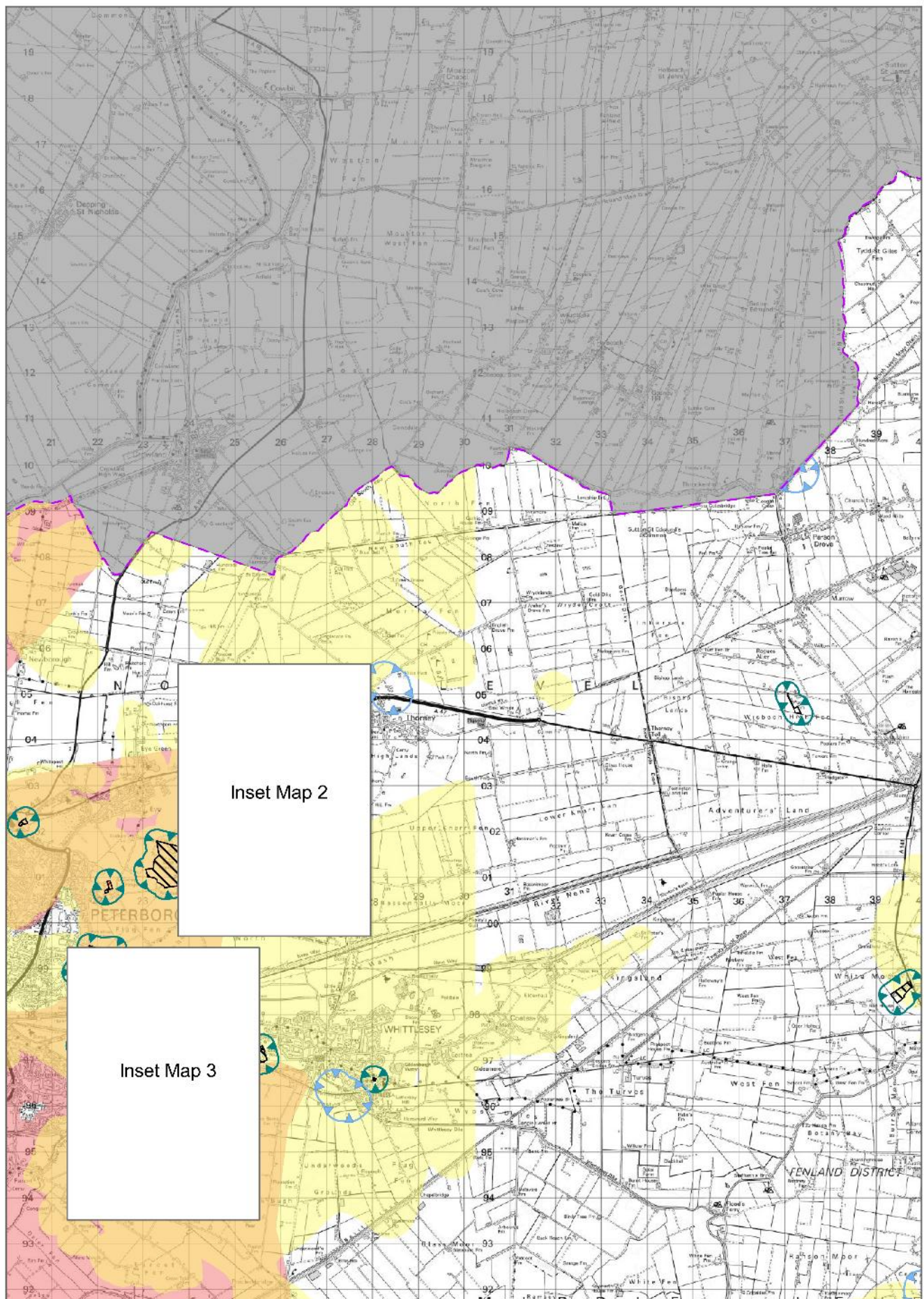
Scale: 1:115,000

© Crown copyright: and database rights 2019 OS 100024236

Overview Map A



Cambridgeshire and Peterborough Minerals & Waste Local Plan: Adopted, July 2021



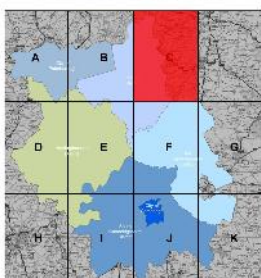
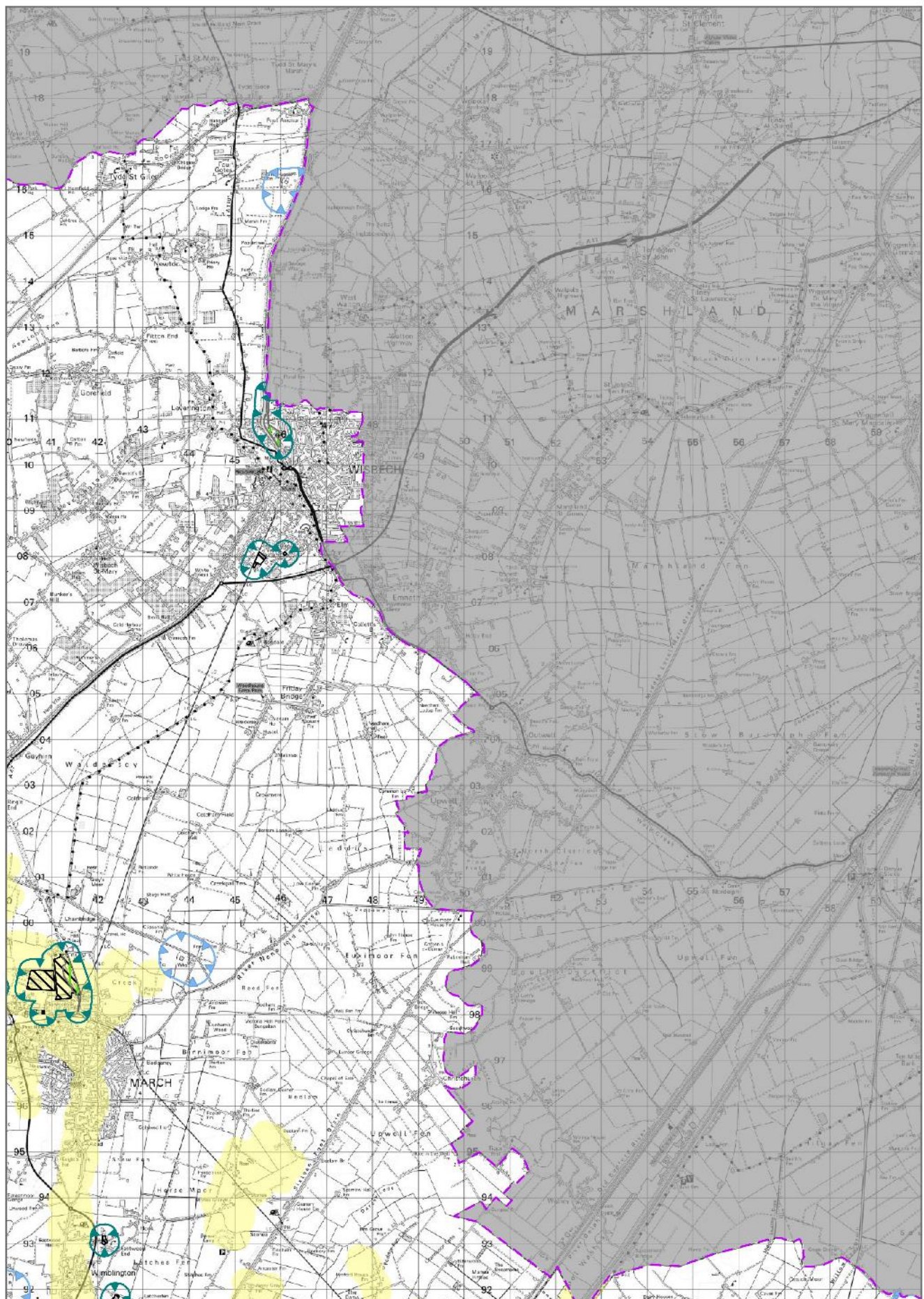
Scale: 1:115,000

Overview Map B

© Crown copyright and database rights 2019 OS 100024236



Cambridgeshire and Peterborough Minerals & Waste Local Plan: Adopted, July 2021



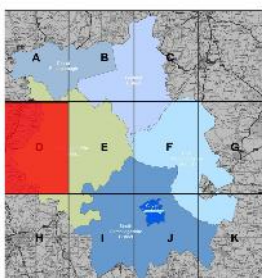
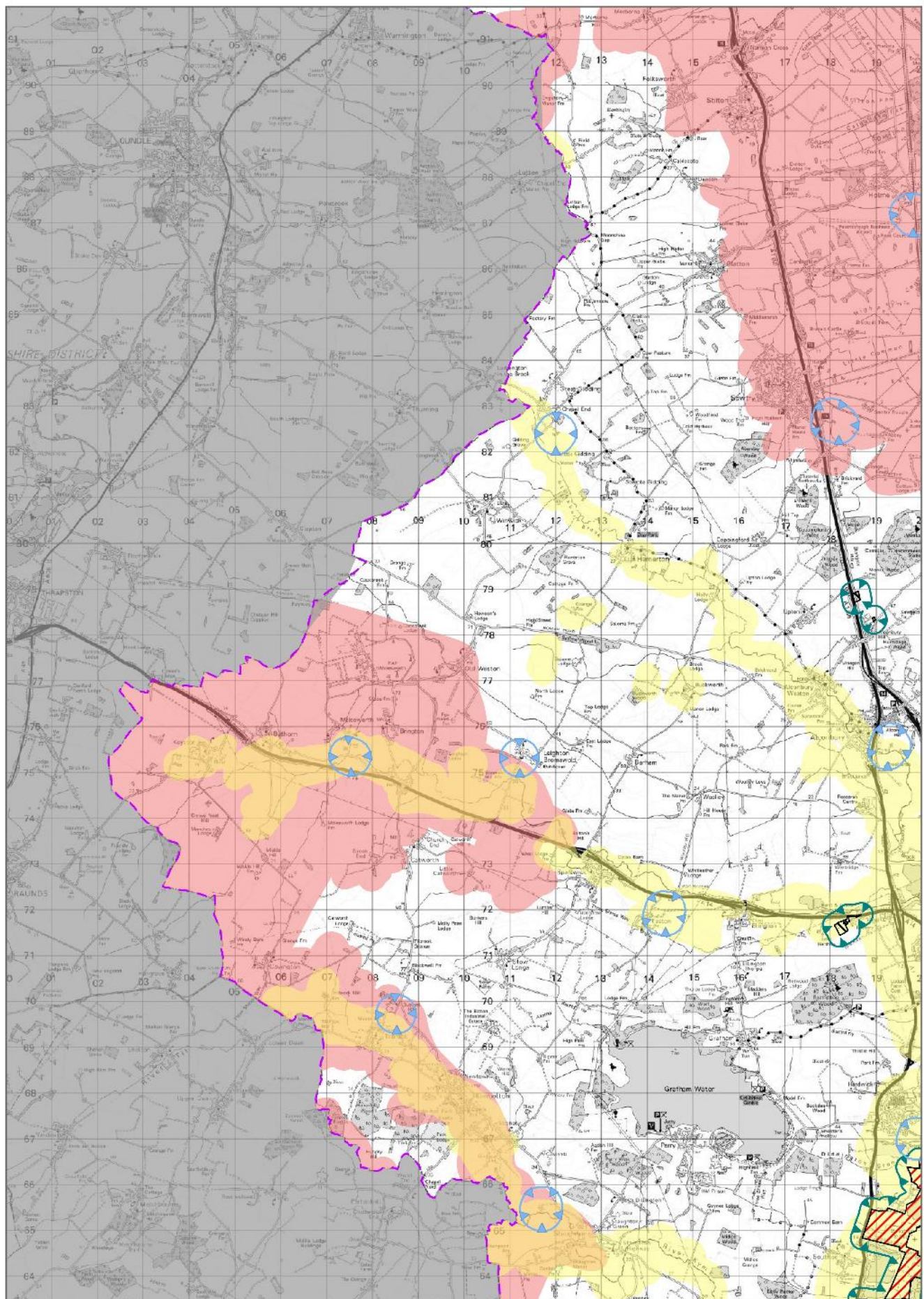
Scale: 1:115,000



Overview Map C

© Crown copyright and database rights 2019 OS 100024236

Cambridgeshire and Peterborough Minerals and Waste Local Plan: Adopted, July 2021



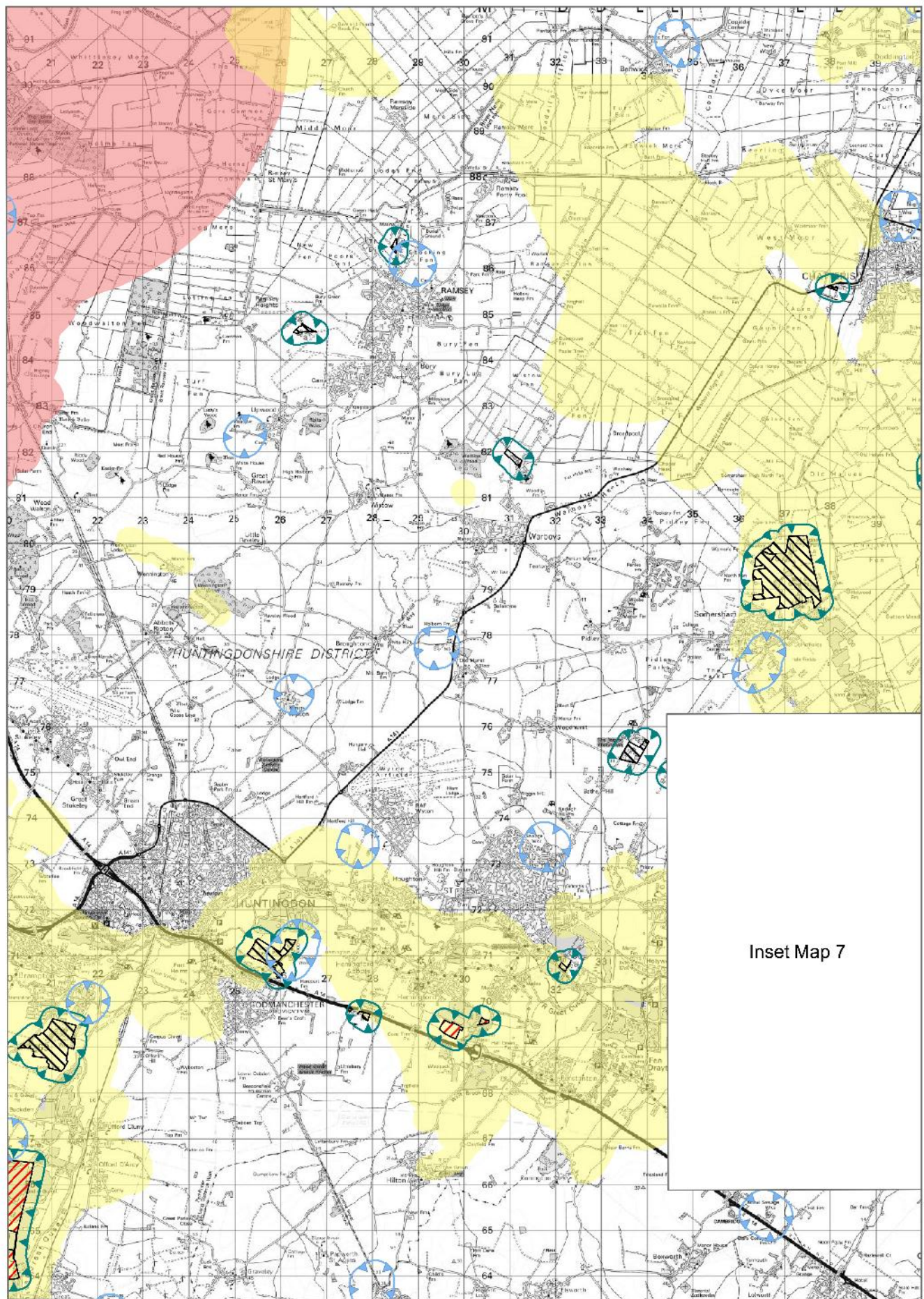
Scale: 1:115,000



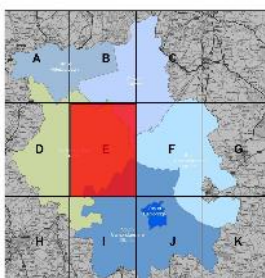
Overview Map D

© Crown copyright and database rights 2019 OS 100024236

Cambridgeshire and Peterborough Minerals & Waste
Local Plan: Adopted, July 2021



Inset Map 7



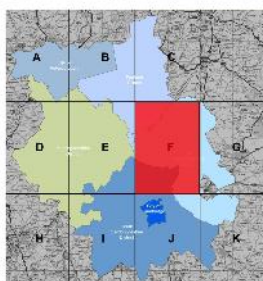
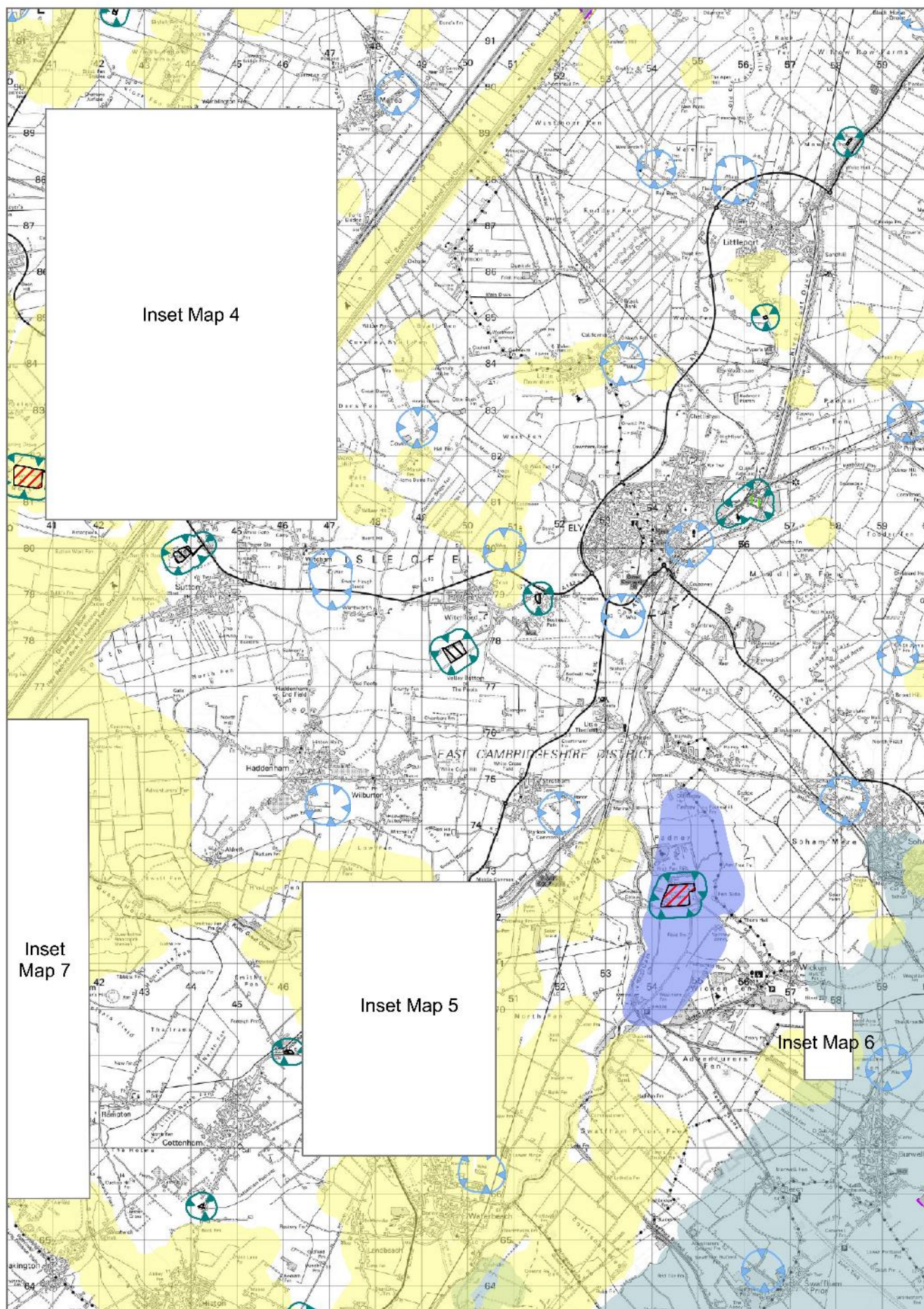
Scale: 1:115,000



Overview Map E

© Crown copyright: and database rights 2019 OS 100024236

Cambridgeshire and Peterborough Minerals & Waste
Local Plan: Adopted, July 2021



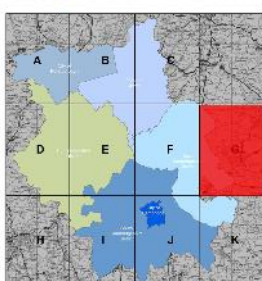
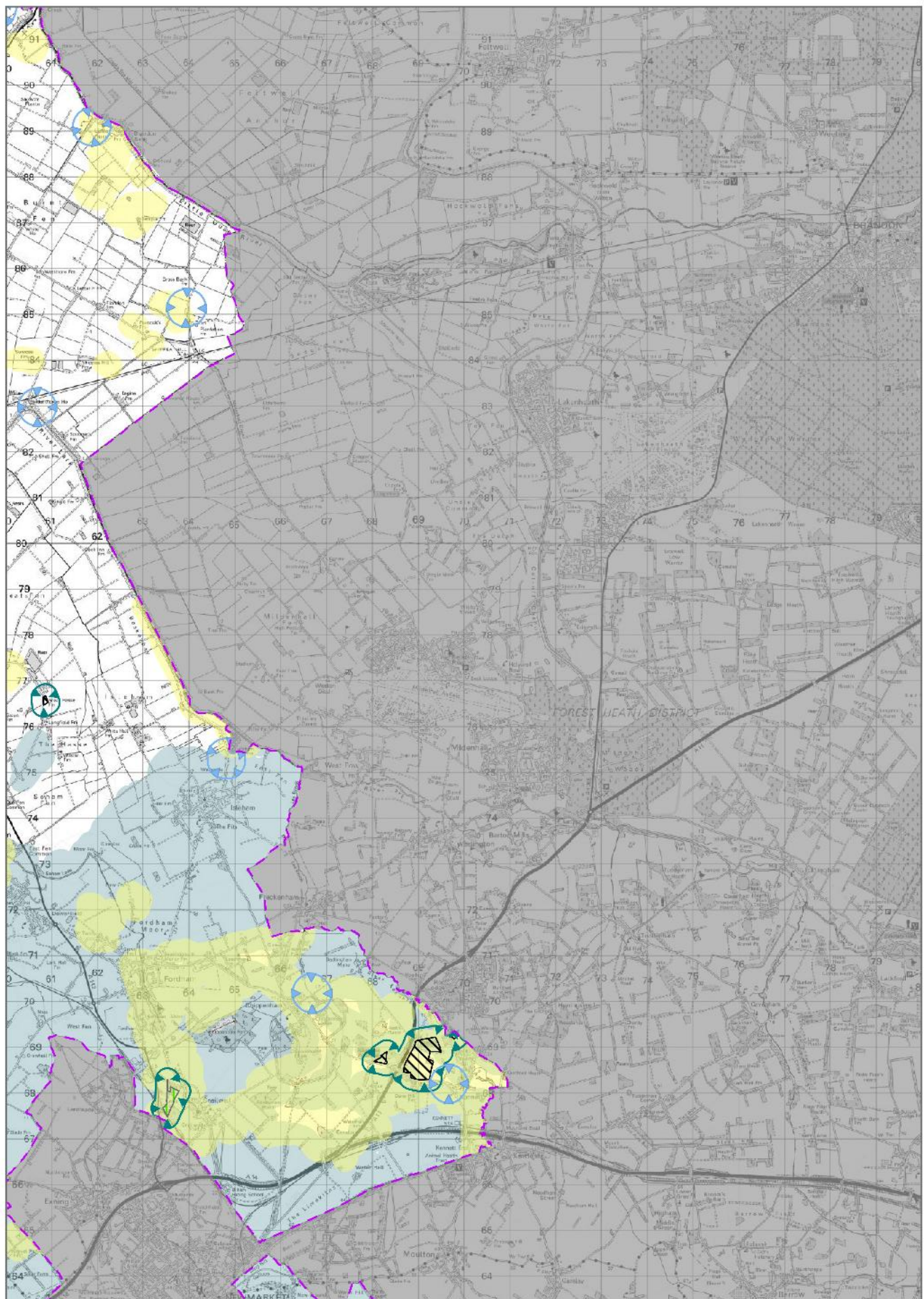
Scale: 1:115,000

Overview Map F



© Crown copyright and database rights 2019 OS 100024236

Cambridgeshire and Peterborough Minerals & Waste
Local Plan: Adopted, July 2021



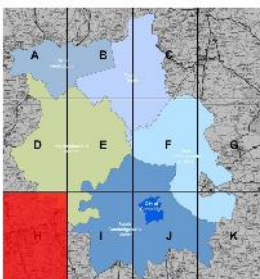
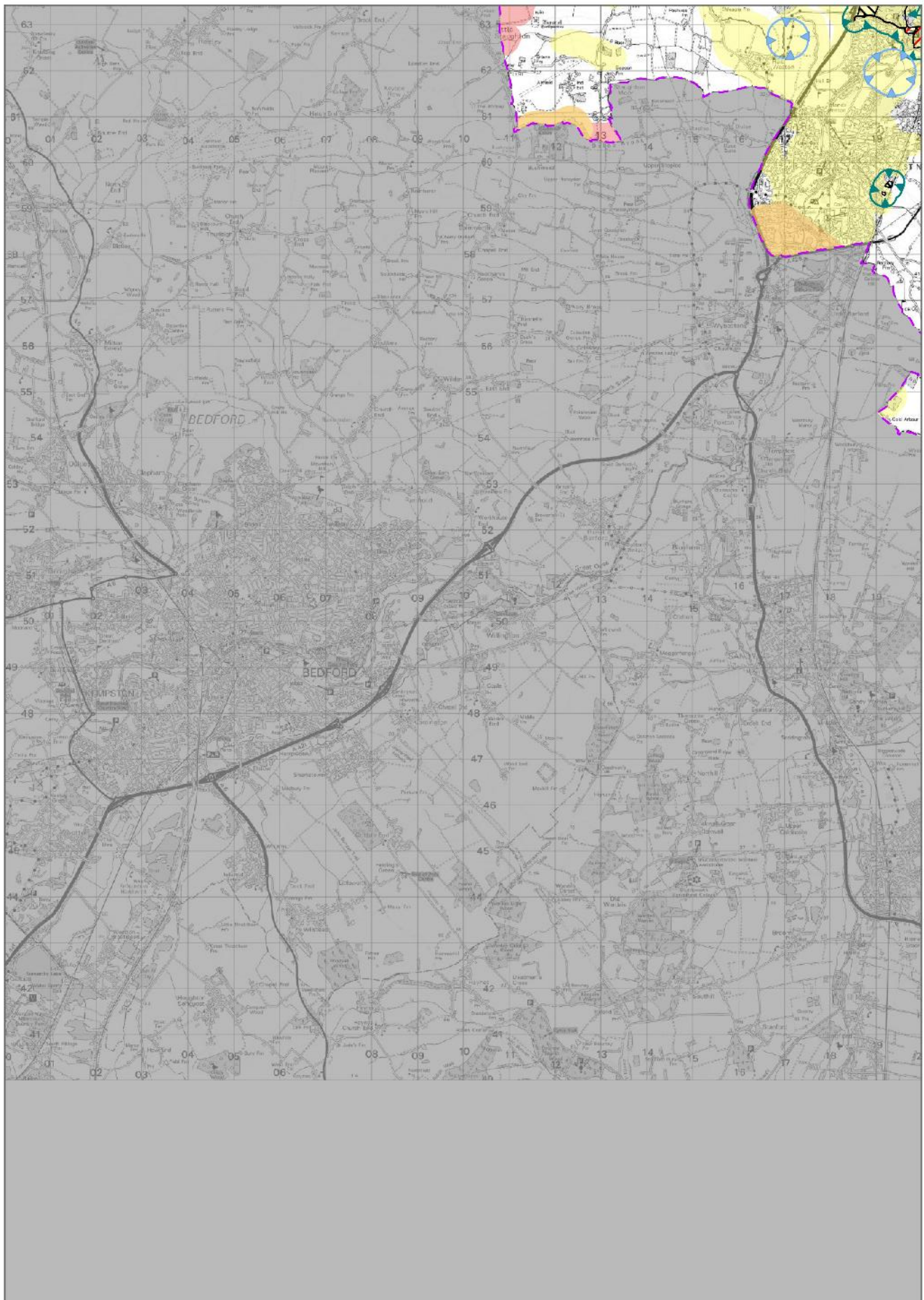
Scale: 1:115,000

© Crown copyright: and database rights 2019 OS 100024236



Cambridgeshire and Peterborough Minerals & Waste Local Plan: Adopted, July 2021

Overview Map G



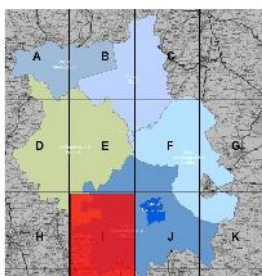
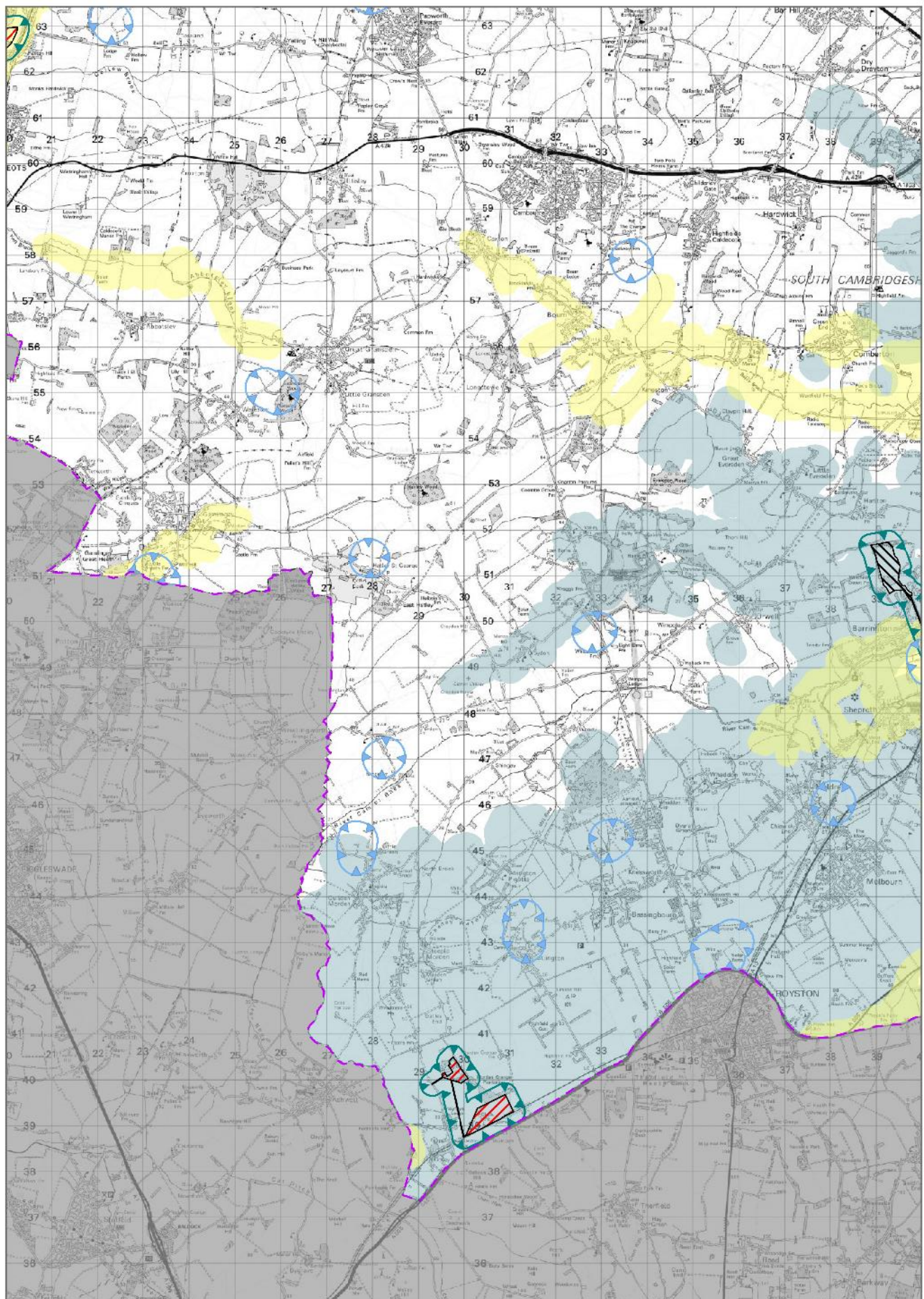
Scale: 1:115,000

Overview Map H

© Crown copyright and database rights 2019 OS 100024236



Cambridgeshire and Peterborough Minerals & Waste
Local Plan: Adopted, July 2021



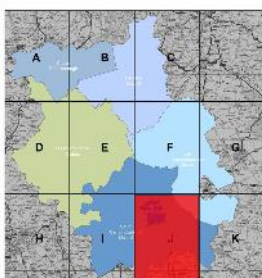
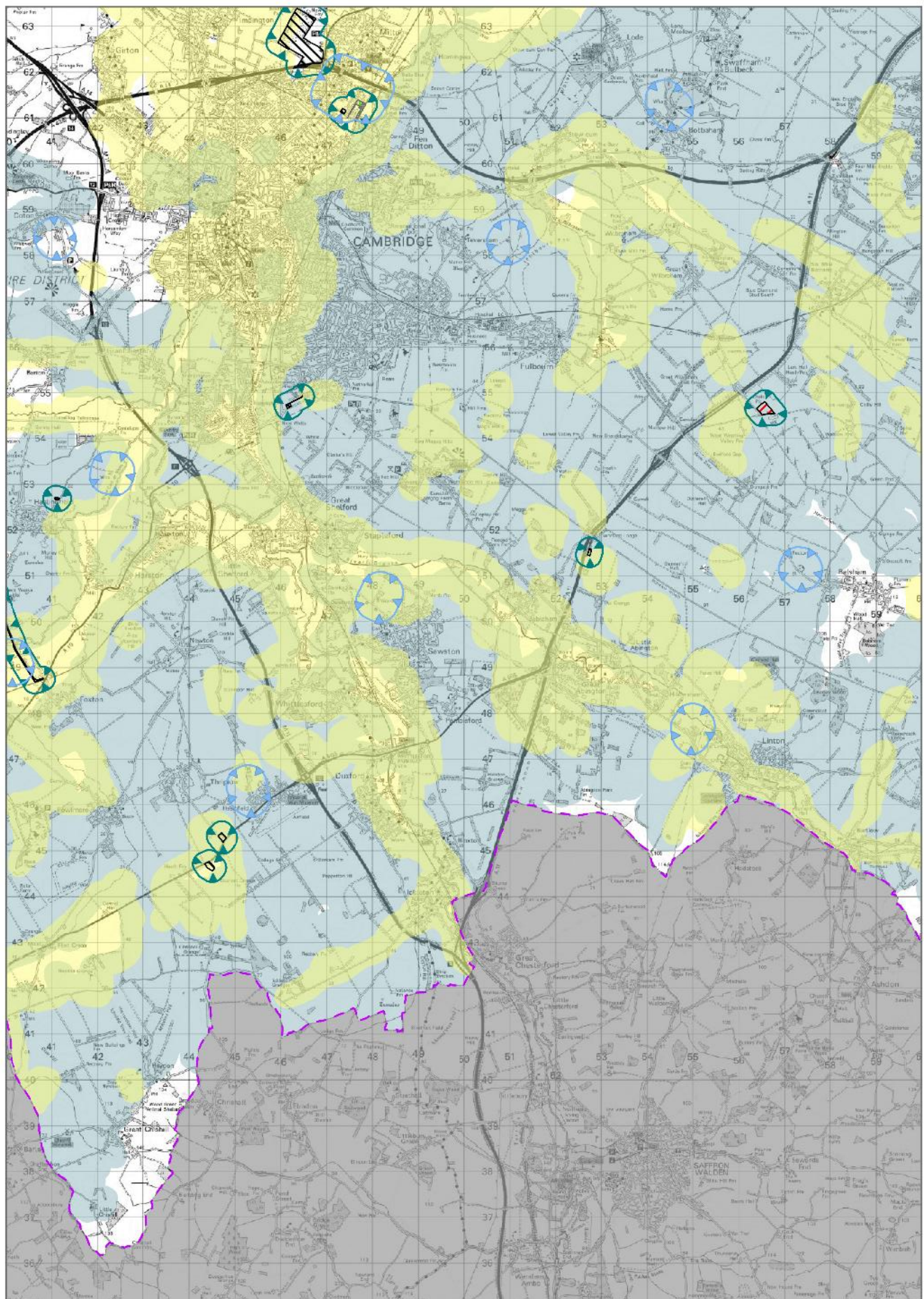
Scale: 1:115,000

Overview Map I

© Crown copyright and database rights 2019 OS 100024236



Cambridgeshire and Peterborough Minerals & Waste
Local Plan: Adopted, July 2021



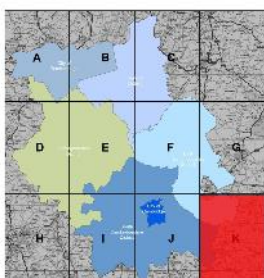
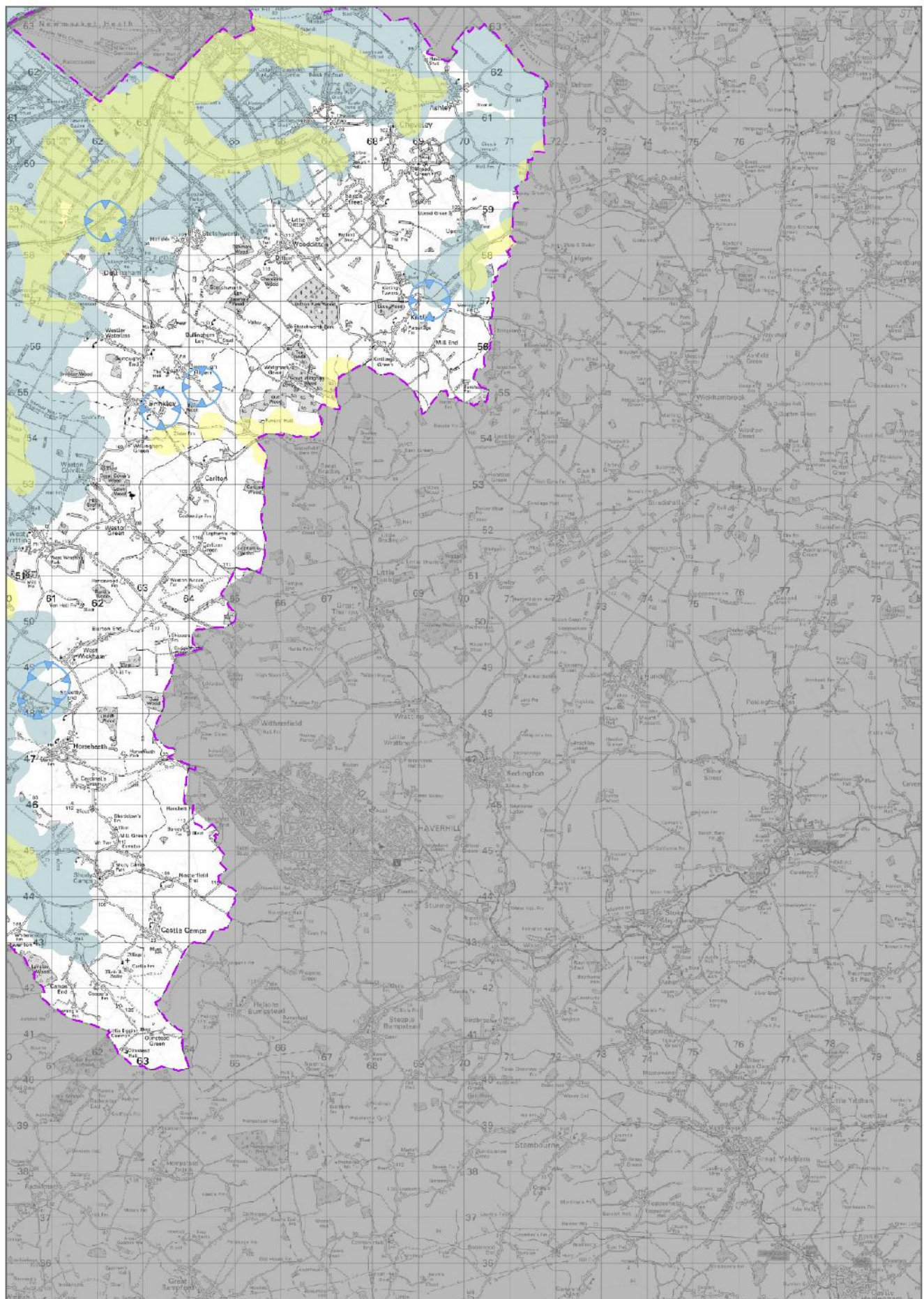
Scale: 1:115,000

Overview Map J

© Crown copyright and database rights 2019 OS 100024236



Cambridgeshire and Peterborough Minerals & Waste Local Plan: Adopted, July 2021



Scale: 1:115,000

© Crown copyright: and database rights 2019 OS 100024236



Cambridgeshire and Peterborough Minerals & Waste Local Plan: Adopted, July 2021

Overview Map K

