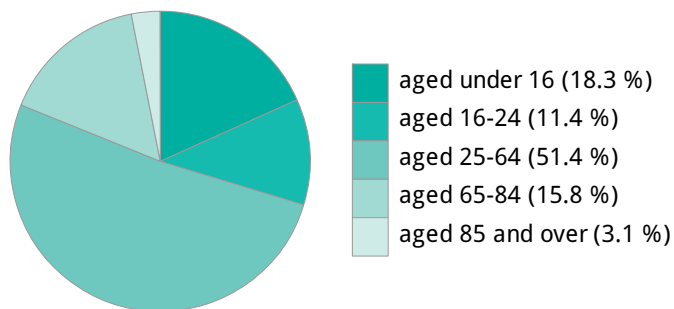




## Report - Wisbech

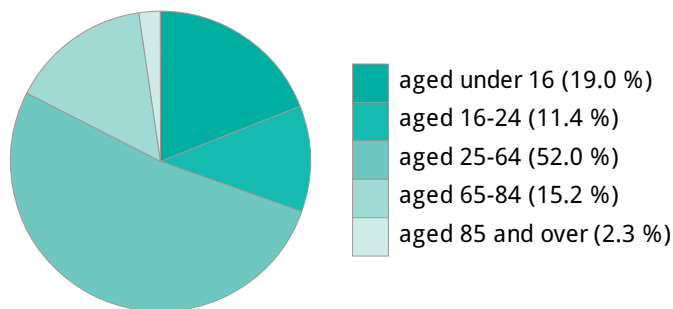
### Population

Population by age group, 2014  
Selection



Source: ONS © Crown copyright 2015 - total: 23,692

Population by age group, 2014  
England



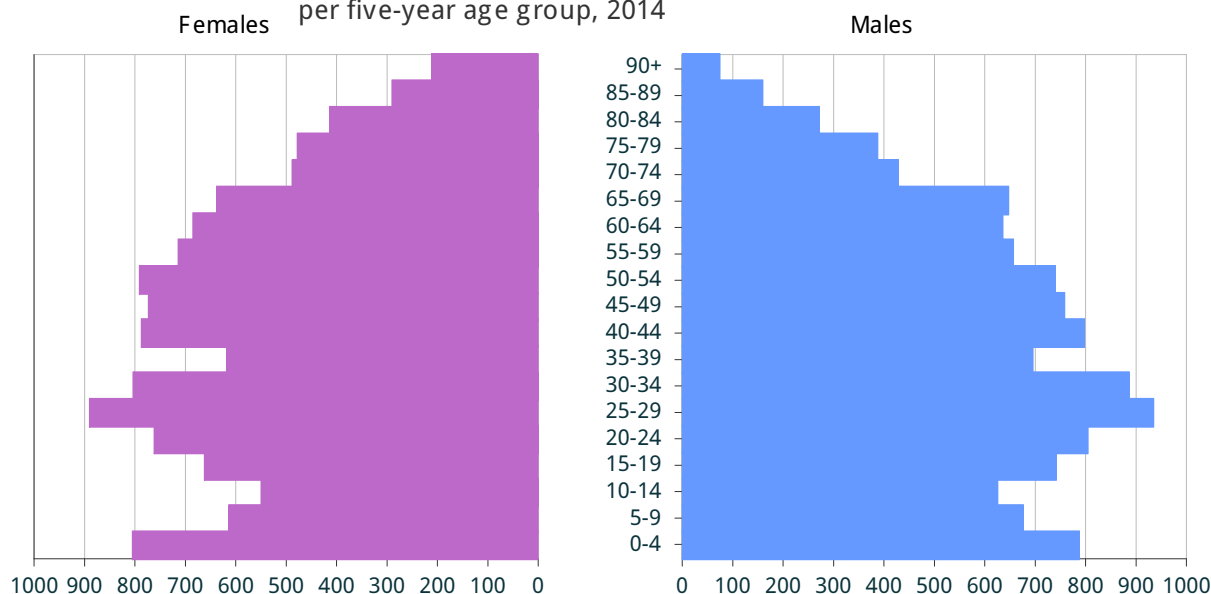
Source: ONS © Crown copyright 2015

Population by age group, 2014, numbers

Ages	Selection	Lower Tier Local Authority (Fenland)	Upper Tier Local Authority (Cambridgeshire)	England
aged under 16	4,333	17,139	116,858	10,303,556
aged 16-24	2,698	9,713	75,272	6,210,192
aged 25-64	12,170	49,520	334,149	28,265,162
aged 65-84	3,755	18,502	97,958	8,262,192
aged 85 and over	736	2,858	15,581	1,275,516
Total	23,692	97,732	639,818	54,316,618

Source: ONS © Crown copyright 2015

Age pyramid for selection: male and female numbers  
per five-year age group, 2014



Source: ONS © Crown Copyright 2015



### Report - Wisbech

### Ethnicity & Language

Ethnicity & Language indicators, 2011, numbers

Indicator	Selection	Lower Tier Local Authority (Fenland)	Upper Tier Local Authority (Cambridgeshire)	England
Black and Minority Ethnic (BME) Population	749	2,631	46,223	7,731,314
Population whose ethnicity is not 'White UK'	4,513	9,111	96,593	10,733,220
Population who cannot speak English well or at all	1,338	1,902	6,415	843,845

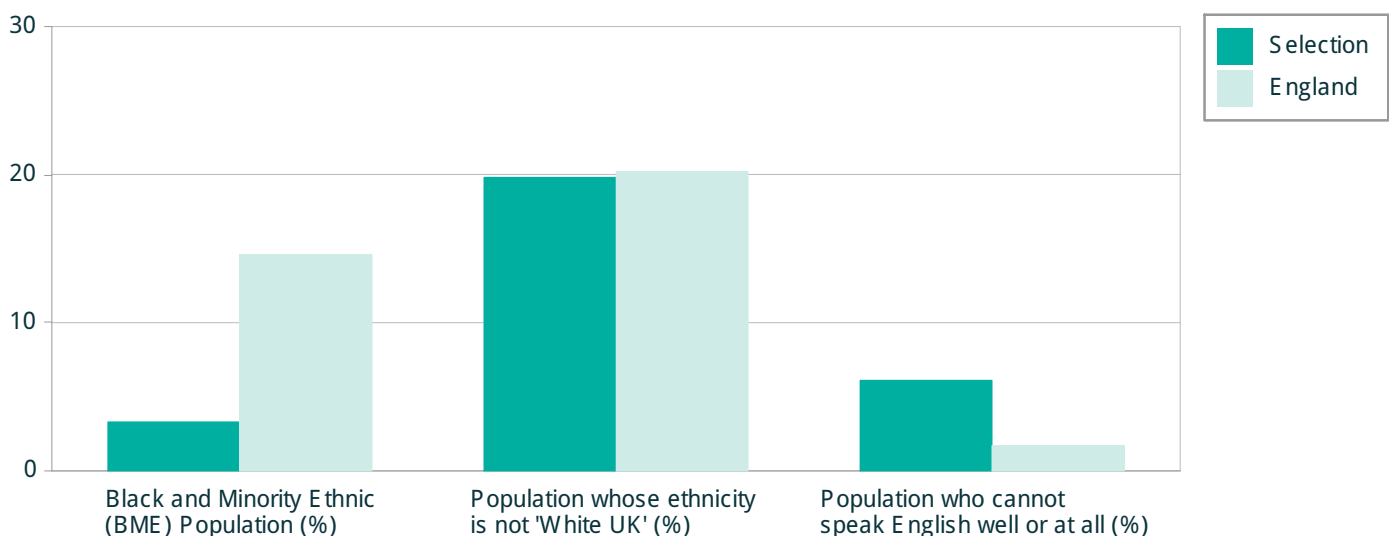
Source: ONS Census

Ethnicity & Language indicators, 2011, %

Indicator	Selection	Lower Tier Local Authority (Fenland)	Upper Tier Local Authority (Cambridgeshire)	England
Black and Minority Ethnic (BME) Population (%)	3.3	2.8	7.4	14.6
Population whose ethnicity is not 'White UK' (%)	19.8	9.6	15.5	20.2
Population who cannot speak English well or at all (%)	6.1	2.1	1.1	1.7

Source: ONS Census

Ethnicity & Language indicators, 2011, %, Selection



Source: ONS Census



## Report - Wisbech

## Child Development, Education and Employment

Child development, education and employment indicators, numbers (estimated from MSOA level data)

Indicator	Selection	Lower Tier Local Authority (Fenland)	Upper Tier Local Authority (Cambridgeshire)	England
Low birth weight births, 2010-2014	138	421	2,443	248,184
A good level of development at age 5, 2013/14	145	595	4,399	387,000
Achieving 5A*-C (incl. Eng & Maths) GCSE, 2013/14	98	524	3,395	315,795
Claiming job seekers allowance, 2015/16*	266	687	3,021	612,166
Claiming job seekers allowance for > 1 year, 2015/16	50	110	445	147,990

Source: Public Health England, ONS, NOMIS, DfE

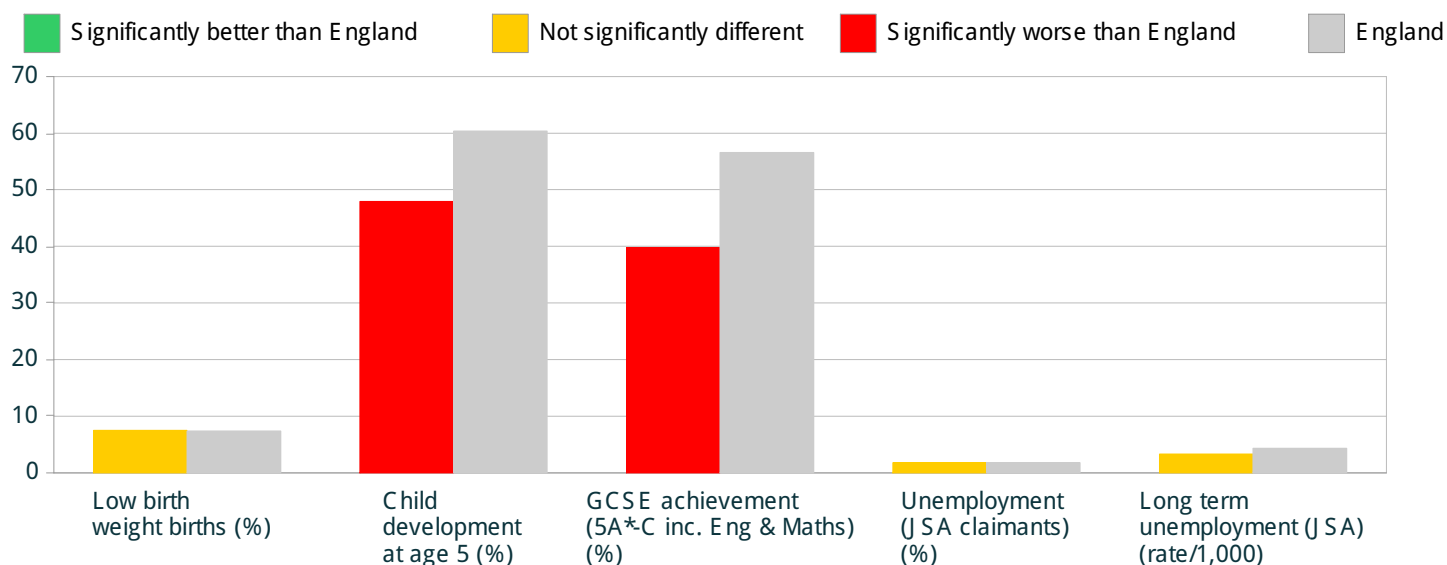
\* Monthly average

Child development, education and employment indicators, values (estimated from MSOA level data)

Indicator	Selection	Lower Tier Local Authority (Fenland)	Upper Tier Local Authority (Cambridgeshire)	England
Low birth weight births (%)	7.5	7.3	6.5	7.4
Child development at age 5 (%)	47.9	53.5	61.3	60.4
GCSE achievement (5A*-C inc. Eng & Maths) (%)	39.8	48.7	56.4	56.6
Unemployment (J SA claimants) (%)	1.8	1.2	0.7	1.8
Long term unemployment (J SA) (rate/1,000)	3.3	1.9	1.1	4.3

Source: Public Health England, ONS, NOMIS, DfE

Child development, education and employment indicators, Selection (comparing to England average)



Source: Public Health England, ONS, NOMIS, DfE  
www.localhealth.org.uk



## Report - Wisbech

### Health and Care

Health and care indicators, 2011, numbers

Indicator	Selection	Lower Tier Local Authority (Fenland)	Upper Tier Local Authority (Cambridgeshire)	England
General health: very bad	361	1,293	5,453	660,749
General health: bad or very bad	1,553	5,883	25,168	2,911,195
Limiting long term illness or disability	4,919	20,030	95,027	9,352,586
Provides unpaid care for 1 or more hours per week	2,313	10,594	60,176	5,430,016
Provides unpaid care for 50 or more hours per week	751	2,944	12,078	1,256,237

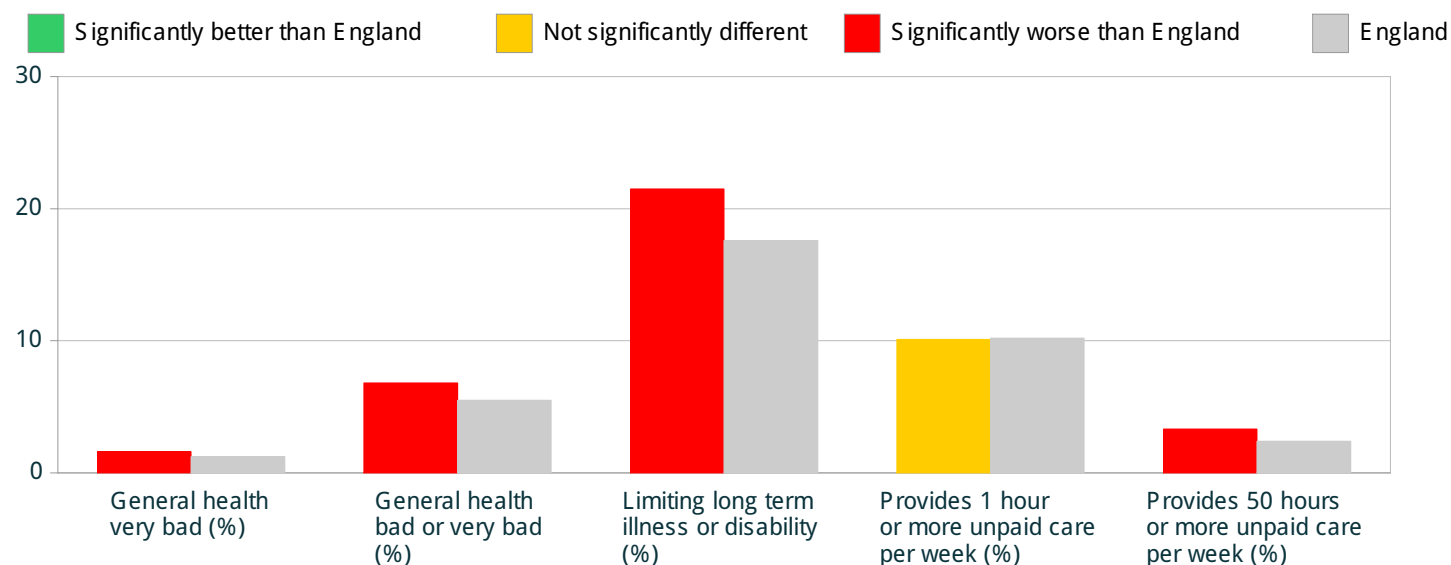
Source: ONS Census

Health and care indicators, 2011, %

Indicator	Selection	Lower Tier Local Authority (Fenland)	Upper Tier Local Authority (Cambridgeshire)	England
General health very bad (%)	1.6	1.4	0.9	1.2
General health bad or very bad (%)	6.8	6.2	4.1	5.5
Limiting long term illness or disability (%)	21.5	21	15.3	17.6
Provides 1 hour or more unpaid care per week (%)	10.1	11.1	9.7	10.2
Provides 50 hours or more unpaid care per week (%)	3.3	3.1	1.9	2.4

Source: ONS Census

Health and care indicators, 2011, %, Selection (comparing to England average)



Source: ONS Census  
www.localhealth.org.uk



## Report - Wisbech

## Emergency hospital admissions

Emergency Hospital Admissions, numbers, 2010/11 to 2014/15 (estimated from MSOA level data)

Indicator	Selection	Lower Tier Local Authority (Fenland)	Upper Tier Local Authority (Cambridgeshire)	England
Emergency hospital admissions for all causes	14,004	51,885	260,650	26,462,290
Emergency hospital admissions for CHD*	476	1,847	7,605	690,158
Emergency hospital admissions for stroke	204	830	3,810	389,174
Emergency hospital admissions for MI*	242	827	3,523	322,544
Emergency hospital admissions for COPD*	411	1,286	5,341	572,993

Source: Public Health England, HSCIC © Copyright 2016

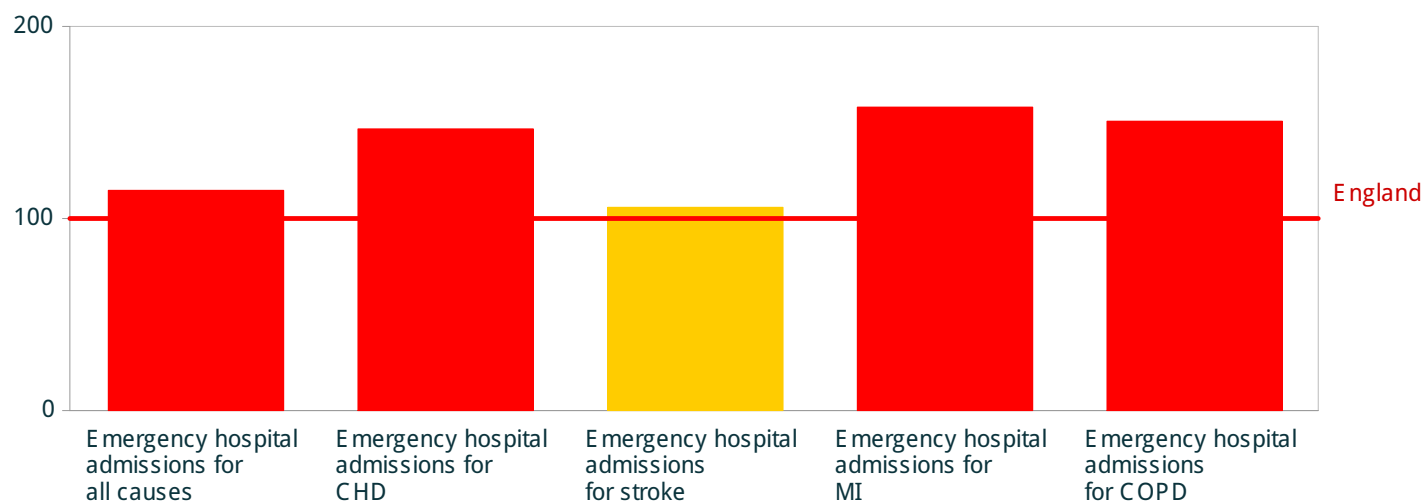
\*CHD: Coronary Heart Disease; MI: Myocardial Infarction (heart attack); COPD: Chronic Obstructive Pulmonary Disease

Emergency Hospital Admissions, Standardised Admission Ratios (SARs), 2010/11 to 2014/15 (est. from MSOA data)

Indicator	Selection	Lower Tier Local Authority (Fenland)	Upper Tier Local Authority (Cambridgeshire)	England
Emergency hospital admissions for all causes	114.7	101.4	84.1	100
Emergency hospital admissions for CHD	146.6	125.9	93.7	100
Emergency hospital admissions for stroke	105.8	98.3	83.4	100
Emergency hospital admissions for MI	157.9	120.4	92.8	100
Emergency hospital admissions for COPD	150.6	103	79.5	100

Source: Public Health England, HSCIC © Copyright 2016

Emergency Hospital admissions, SARs, 2010/11 to 2014/15, Selection (comparing to England average)

■ Significantly better than England
 ■ Not significantly different
 ■ Significantly worse than England


Source: Public Health England, HSCIC © Copyright 2016



## Report - Wisbech

## Mortality and causes of death - premature mortality

Causes of deaths - premature mortality, numbers, 2010-2014

Indicator	Selection	Lower Tier Local Authority (Fenland)	Upper Tier Local Authority (Cambridgeshire)	England
All causes, aged under 65	213	772	3,530	391,312
All causes, aged under 75	399	1,613	7,325	762,945
All cancer, aged under 75	145	672	3,257	310,346
All circulatory disease, aged under 75	96	381	1,566	176,217
Coronary heart disease, aged under 75	50	213	822	99,575

Source: Public Health England, produced from ONS data Copyright © 2016

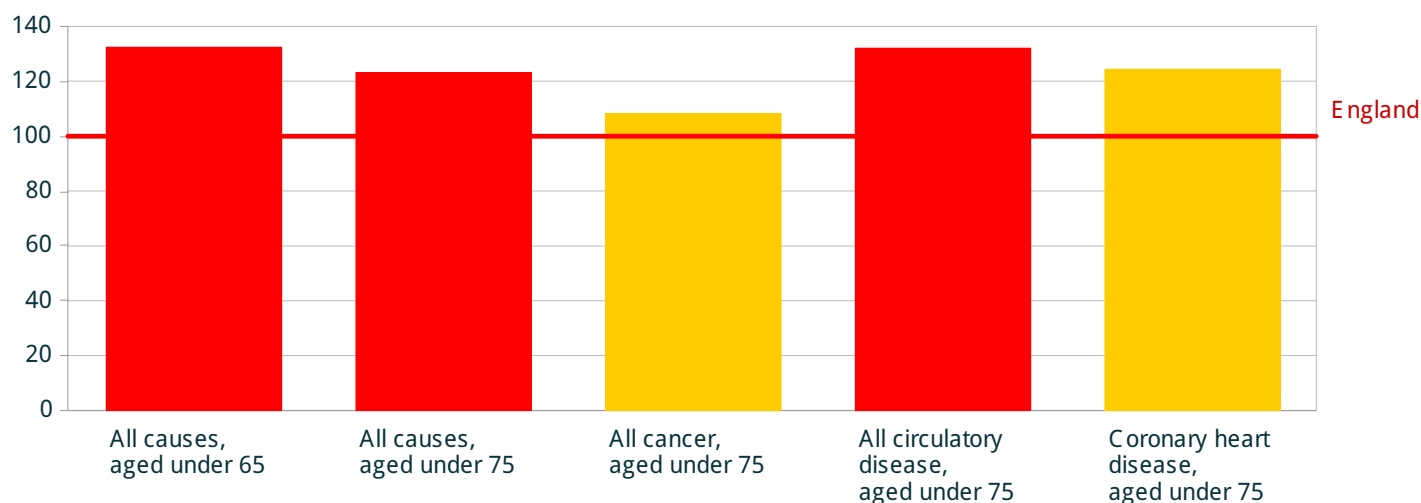
Causes of deaths - premature mortality, Standardised Mortality Ratios (SMRs), 2010-2014

Indicator	Selection	Lower Tier Local Authority (Fenland)	Upper Tier Local Authority (Cambridgeshire)	England
All causes, aged under 65	132.4	107.3	78.8	100
All causes, aged under 75	123.2	104.2	82.5	100
All cancer, aged under 75	108.3	103.1	88.6	100
All circulatory disease, aged under 75	132	108.1	78.7	100
Coronary heart disease, aged under 75	124.3	108.4	74.6	100

Source: Public Health England, produced from ONS data Copyright © 2016

Causes of deaths - premature mortality, SMRs, 2010-2014, Selection (comparing to England average)

■ Significantly better than England
 ■ Not significantly different
 ■ Significantly worse than England



Source: Public Health England, produced from ONS data Copyright © 2016  
[www.localhealth.org.uk](http://www.localhealth.org.uk)