

Cambridgeshire & Peterborough Local Outbreak Engagement Board

Friday, 6th November 2020

11.00 a.m.

COVID-19

During the Covid-19 pandemic Council and Committee meetings will be held virtually for Committee members and for members of the public who wish to participate. These meetings will be held via Zoom.

Agenda

Open to public and press

1. Apologies and Declarations of Interests (oral)
[Guidance on declaring interests is available here](#)
2. Notes from the meeting on 5th October 2020 (pages 3 to 14)
3. Action log from 5th October 2020 (pages 15 to 17)
4. Public Questions (oral)

Public speaking on the agenda items above is encouraged. Speakers must register their intention to speak no later than 12.00 noon one working day before the meeting
[Registering requests to speak is available here](#)
5. Health Protection Board Report – Presentation (oral/
Liz Robin)
6. Communication and Campaign Updates (pages 18 to 20/
Christine
Birchall)
7. November Lockdown – Expected Outcomes (oral/All)
and Forward Planning

The Local Outbreak Engagement Board comprises the following members:

Cambridgeshire County Council – Councillors Hickford & Hudson
Peterborough City Council – Councillors Holdich & Fitzgerald
Director of Public Health, Executive Director: People and Communities,
& Service Director: Communities and Partnership
Clinical Commissioning Group – Jan Thomas, Gary Howsam, Louis Kamfer &
Louise Mitchell
Cambridgeshire District Councils – Councillor Handley
Chair of Cambridgeshire and Peterborough Healthwatch
Police and Crime Commissioner

For more information about this meeting please contact the
Head of Programmes Teams, Public Health

Name: Kate Parker

Email: kate.parker@cambridgeshire.gov.uk

Agenda Item No.2

**NOTES OF THE CAMBRIDGESHIRE & PETERBOROUGH
LOCAL OUTBREAK ENGAGEMENT BOARD MEETING
HELD AT 11AM ON
MONDAY 5 OCTOBER 2020
VIRTUAL MEETING VIA ZOOM**

Present:

Cllr John Holdich (Chair), Chairman, Peterborough Health and Wellbeing Board
Cllr Roger Hickford, Chairman, Cambridgeshire Health and Wellbeing Board
Cllr Wayne Fitzgerald, Deputy Leader and Cabinet Member for Adult Social Care, Health and Public Health, PCC
Cllr Peter Hudson, Chairman, CCC Health Committee
Dr. Liz Robin, Director of Public Health, Cambridgeshire County Council (CCC) and Peterborough City Council (PCC)
Wendi Ogle-Welbourn, Executive Director – People and Communities, CCC and PCC
Adrian Chapman, Service Director – Communities and Partnerships, CCC and PCC
Val Moore, Chairman, Healthwatch Cambridgeshire
Ray Bisby, Acting Police and Crime Commissioner for Cambridgeshire
Christine Birchall, Head of Communications, CCC and PCC
Kate Parker, Head of Public Health Programmes, NHS Cambridgeshire
Nick Mills – Democratic Services Officer, CCC

1. APOLOGIES AND DECLARATIONS OF INTERESTS

It was noted that Councillor Alex Malyon had not been able to attend any meetings of the Local Outbreak Engagement Board. It was suggested that a substitute or replacement member should be appointed to provide district representation. The Director of Public Health commented that she was in communication with the Chief Executive of South Cambridgeshire District Council to ensure there was appropriate representation going forward.

There were no declarations of interest.

ACTIONS AGREED:

The Democratic Services Officer and Director of Public Health to find a substitute or replacement member for Cllr Alex Malyon.

2. NOTES FROM THE MEETING ON 11 SEPTEMBER 2020

The notes of the meeting on 11 September 2020 were agreed as a true and accurate record. This was proposed by Councillor Holdich, seconded by Councillor Hickford and agreed UNANIMOUSLY.

3. ACTION LOG FROM 11 SEPTEMBER 2020

Officers were invited to outline any changes to the Action Log since publication.

The Director of Public Health confirmed that she was in contact with the Chief Executive of South Cambridgeshire District Council regarding District Council representation.

The Acting Police and Crime Commissioner stated that he had spoken to the Chief Constable who reiterated that breaches of COVID-19 restrictions would be dealt with through explanation, encouragement and engagement with recourse to enforcement as a final measure where necessary and proportionate.

The Service Director – Communities and Partnerships added that the Constabulary had committed to providing 4 hours per day of police presence in Central Peterborough.

Members asked the Acting Police and Crime Commissioner how much enforcement there had been. The Commissioner responded that evidence was required when issuing fixed penalty notices as these could be taken to court. The 'four E's' enabled this evidence to be gathered. Enforcement would take place where required as a final option. Everyone had a personal responsibility to limit the spread of the virus by following the regulations. The public were thanked for their support in following the changing regulations and were encouraged to report breaches to the Police via their website.

130 prosecutions of COVID-19 breaches had taken place, which was in line with other areas of the country.

A more detailed breakdown of these prosecutions was requested.

ACTIONS AGREED

The Acting Police and Crime Commissioner to provide a more detailed breakdown of COVID-19 prosecutions in Cambridgeshire.

4. PUBLIC QUESTIONS

No public questions were received.

5. HEALTH PROTECTION BOARD REPORT – PRESENTATION

The Director of Public Health delivered a PowerPoint presentation which provided an update on COVID-19 from the Health Protection Board. Presentation slides may be found in Appendix 1.

The Local Outbreak Engagement Board debated the presentation and in summary, key points raised and responses to questions included:

- Members asked if the positive cases that had not been recorded in national figures in error from the previous week had affected Cambridgeshire. Officers responded that the details on this were not yet available. However, data received via internal reports suggested that there has been some impact.
- Members asked if the Director had liaised with University Centre Peterborough as well as Anglia Ruskin University. Officers responded that officers had ensured that Anglia Ruskin University in Peterborough was linked in as well as Anglia Ruskin in Cambridgeshire. Links were also pursued with Further Education colleges. University Centre Peterborough was operated by Peterborough Regional College but the Director of Public Health would verify that these links were in place outside the meeting

- Members asked if the recent spike in cases had been caused by people going on holiday. The Director responded that some of the spike in the 18-30 age group may have been caused by group holidays abroad where social distancing may not have been as rigorously enforced.
- Members requested further information on what was being done to manage COVID-19 in universities. The Director responded that a more detailed briefing note on this subject would be shared with Members. Work had been done in collaboration with universities to communicate with students to ensure they behave in a safe way and to help universities operate in a safe way. Plans were in place for potential outbreaks with the local authority informed directly of cases among University staff or students. Support would be provided for Universities' Outbreak Management plans and links with Public Health England were pursued. Weekly asymptomatic screening took place at Cambridge University colleges with students asked to socialise in groups of six. The importance of staying on top of infection control in universities due to the high levels of COVID - positivity in younger age groups was recognised.

ACTIONS AGREED

The Director of Public Health to check that University Centre Peterborough had been fully liaised with.

The Director of Public Health to provide Members with a briefing note on the management of COVID-19 in universities.

6. PETERBOROUGH SUMMIT – UPDATE

The Director of Public Health introduced this item and made the following points:

- The summit was organised to emphasise that the risk of COVID-19 had not gone away when Peterborough was taken off the national watch list, to thank people for their efforts in containing the virus in Peterborough and to re-energise efforts to develop future steps.
- The latest information on the virus was presented at the summit, highlighting how actions taken had stabilised infection rates.
- A presentation was given at the summit by the Service Director – Communities and Safety on Rapid Response work.
- A session was held to gather ideas from different groups.

The Service Director – Communities and Safety added the following points:

- The summit included constructive commentary on areas of frustration which would be used to shape strategies going forward.
- The summit reinforced the strength of work with communities and the need to ensure colleagues across Cambridgeshire had the same relationship. There was a direct correlation between community action and the reduced spread of the virus.
- The model of this summit would be easily replicable across Cambridgeshire should this be necessary, with district councils taking the lead.
- The summit had helped to shine a light on key issues.
- The summit was available for viewing online.

The Chair commented that community engagement work had brought Peterborough City Council and communities closer together.

It was noted that a member of staff from the Office of the Police and Crime Commissioner was in the Zoom call for training purposes but would not appear on the public livestream.

7. CAMPAIGN UPDATES

The Head of Communications introduced this item. Details may be found on pages 10 and 11 of the reports pack at this [LINK](#). Additional points not included on these pages included:

- Miriam Margoyles' #cancelcovid video had now been viewed over 20,000 times with over 100 shares on Facebook.
- Marcel's Somerville's video had been viewed 6,000 times.
- Good comments and feedback had been received on the campaign. The campaign was being targeted on Tuesdays and Thursdays in particular as these were popular days for nights out among young people.
- The next phase of the campaign focused on symptoms. Thermometers would be distributed to venues where young people were likely to attend.
- The national hardship fund would start in mid-October and would complement existing support offered through community and social hubs to ensure that people were not discouraged from self-isolation for practical reasons.

The Local Outbreak Engagement Board debated the agenda item and in summary, key points raised and responses to questions included:

- Concern was raised at the lack of Public Questions to the Local Outbreak Engagement Board.
- An assessment was requested on the public's mood and receptiveness to campaigning. The Head of Communications responded that social media comments were reviewed, and these indicated acceptance. There was a 'six-month wall' where people who had been engaging and complying with COVID-19 measures were becoming weary and there was a need to re-invigorate campaigning. At the Peterborough Summit, Community representatives commented that following the regulations was becoming normalised (e.g. compliance with mask wearing). The more people followed these regulations, the more that others would do the same.
- The Service Director, Communities and Safety added that engagement had taken place with a network of community champions. Feedback suggested that there was a growing gap between compliance and non-compliance. There was a core of non-compliance that needed to be addressed in an innovative way. Community engagement had helped to highlight nuanced reasons for non-compliance that would not have otherwise been known.
- Members requested that the Chair of Healthwatch Cambridgeshire brings back information to the Board on the public's mood regarding public health measures from the perspective of Healthwatch
- Members commented that although the use of temperature testing was controversial and was not considered definitive, it should be part of the range of measures to tackle COVID-19. It would act as an important visual reminder for people.

ACTIONS AGREED:

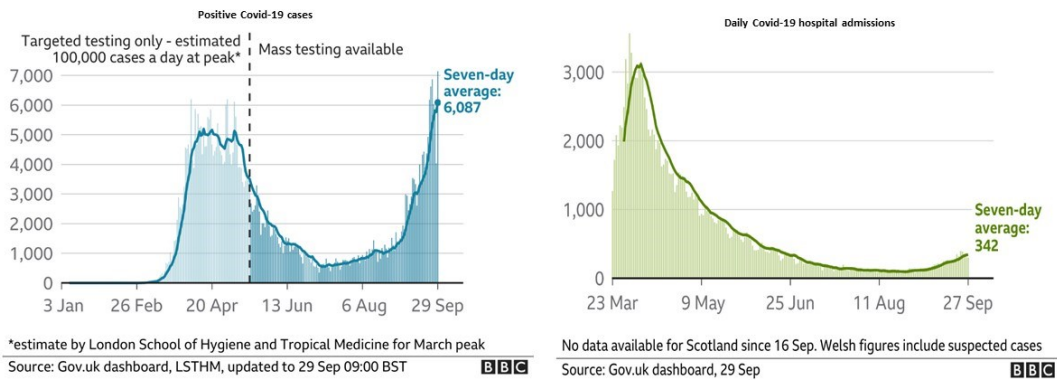
The Chair of Healthwatch Cambridgeshire to bring back information to the Board on the public's mood regarding public health measures from the perspective of Healthwatch
The Chairman closed the meeting. It was noted that the next meeting would be held on 6 November 2020 at 11am.

Covid-19 update from Health Protection Board

<https://www.peterborough.gov.uk/asset-library/PCC-CCC-Local-Outbreak-Control-Plan.pdf>

<https://www.peterborough.gov.uk/asset-library/PCC-CCC-Local-Outbreak-Plan-Roles-and-responsibilities.pdf>

Positive Covid-19 cases and numbers of hospital admissions are increasing across the United Kingdom

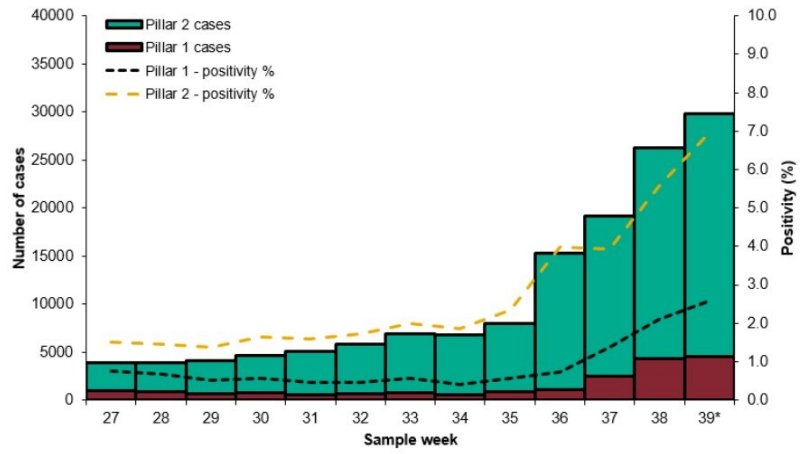


Taken from BBC news website 30/09/20

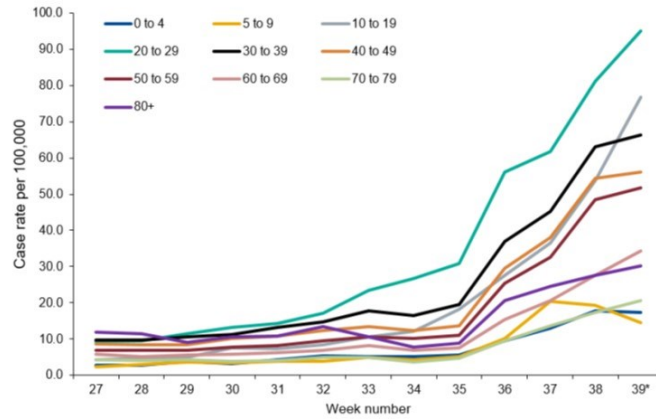
- Nationally, the seven day average number of positive Covid-19 cases is 6,087; this represents a record high, although it should be noted that mass testing was not available during the previous peak and true numbers may therefore have been higher during this earlier period.
- The seven day average number of hospital admissions across the UK is 342

OFFICIAL

Laboratory confirmed COVID-19 cases tested under Pillar 1 and Pillar 2, based on sample week with overall positivity for Pillar 1 and 2 (%)



Weekly laboratory confirmed COVID-19 case rates per 100,000, tested under Pillar 1 and Pillar 2, by age group (England)



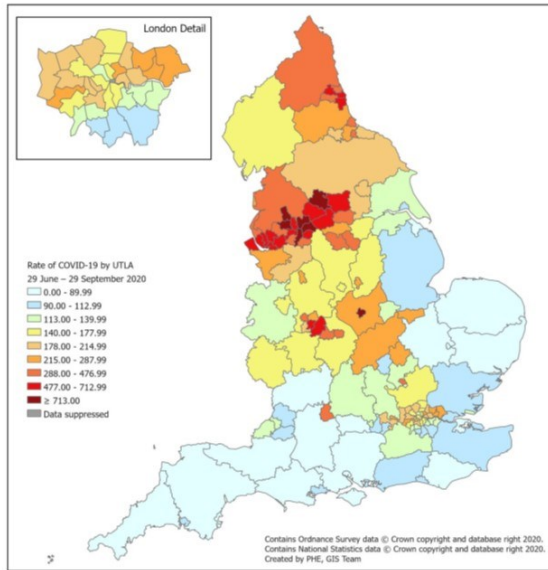
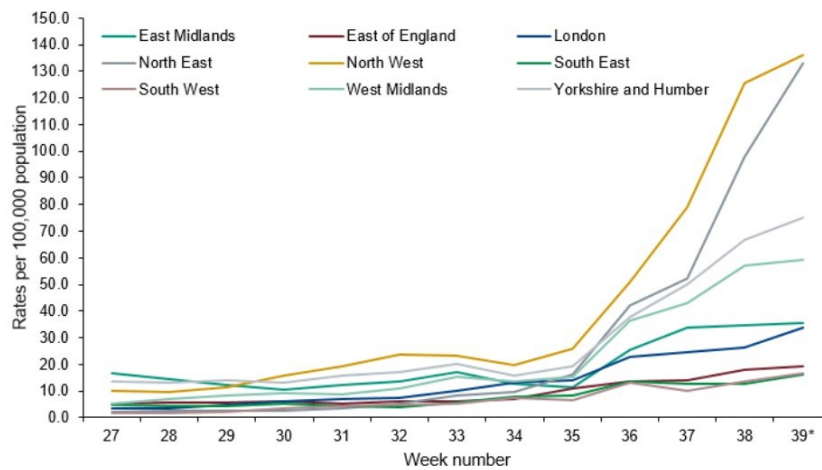
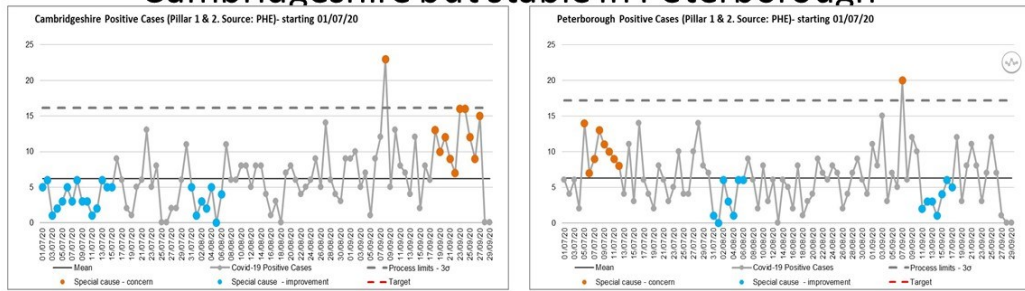


Figure 10: Cumulative rate (from week 27) of COVID-19 cases per 100,000 population tested under Pillar 1 and 2, by upper-tier local authority, England (box shows enlarged map of London area)

Weekly laboratory confirmed COVID-19 case rates per 100,000 population tested under Pillar 1 and Pillar 2, by PHE Centres and sample week



Up to 27.9.20, detected cases were increasing in Cambridgeshire but stable in Peterborough



SPC charts monitor trends over time and plot whether data differ consistently in comparison to previously observed numbers of positive cases. Additional laboratory lag noticed so cases may be added to these data, especially in the most recent points.

- Detected cases were increasing in Cambridgeshire, with 10 consecutive points of data above the mean noted between 18/09 and 27/09.
- After a number of days with case numbers below the mean in Peterborough, likely linked to changes in testing, recent increases in numbers place observed Peterborough data within expected process limits over the last few days.

OFFICIAL

Source: Coronavirus.data.gov.uk

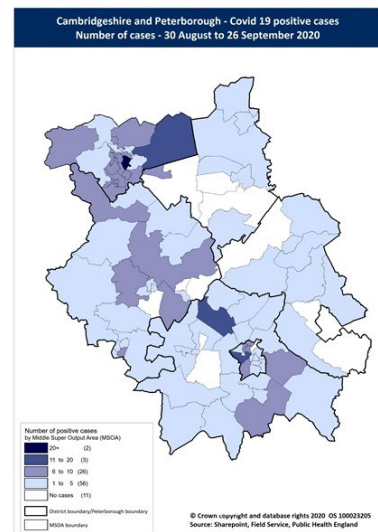
Cambridgeshire and Peterborough map showing variation in numbers of Covid-19 cases (30 Aug – 26 Sep) by MSOA

Higher numbers of Covid-19 cases over the past 4 weeks are primarily observed in Central and Eastern Peterborough and parts of Huntingdonshire, Cambridge and South Cambridgeshire (30 August – 26 September – darker blue shading).

Fewer hotspots in Peterborough may be reflective of recent testing capacity impact

Map now includes care home cases.

MSOA – Middle Super Output Area – geographical areas with similar population size(around 7,000 people) to enable comparisons



OFFICIAL

Covid-19 mortality remains similar to levels in the last few months

ONS reporting Week 38 (ending Friday 18 September 2020):

DEATHS

- **3 Covid-19 related deaths** occurred in Cambridgeshire (2 – Fenland) and Peterborough (1) in ONS reporting week 38. All three deaths occurred in a **care home setting**.
- There were **95 all-cause deaths** in Cambridgeshire and Peterborough (down from 107 in week 37).
- At a district level, **Fenland (+2)** and **Huntingdonshire (+4)** had an **increase in all-cause deaths** compared to the previous week; Cambridge and East Cambridgeshire's all-cause deaths remain static to the previous week, and South Cambridgeshire (-15) showed a decrease.

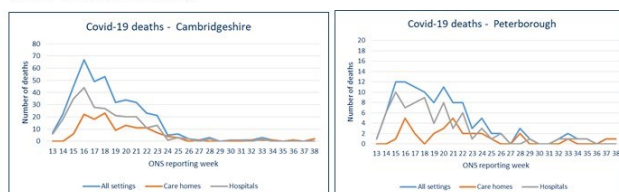
EXCESS DEATHS

- The number of **all-cause deaths** is **below the 2014-18 average** in **Cambridgeshire, Peterborough, and all districts** for week 38.
- The number of **all-cause deaths in care homes** is **below the 2014-18 average in Cambridgeshire and Peterborough**. Numbers are **above** the 5 year average in **East Cambridgeshire, Fenland**, and similar in South Cambridgeshire in week 38.

DEATH TRENDS – Cambridgeshire and Peterborough

Please note the y-axis on the charts have different values

COVID-19 RELATED DEATHS



ALL CAUSE EXCESS DEATHS



OFFICIAL

Governance

- Contain Framework: Peterborough City Council was removed from the national Watchlist as an Area of Concern, on Friday September 25th
- Cambridgeshire & Peterborough Local Outbreak Engagement Board, co-chaired by the HWB Board Chairs, meets monthly and provides political leadership
- Multi-agency C&P Health Protection Board chaired by the DPH meets weekly supported by a Programme Delivery Group for strategic focus on delivering the Local Outbreak Control Plan
- C&P Strategic Co-ordinating Group Executive co-chaired by the CCC/PCC and CCG chief executives meets weekly (or more frequently) to cover wider system working and mobilisation
- Internal CCC/PCC Test and Trace Gold meets 3 x weekly – CEO, DPH, Corporate Director, Communities Director, Comms Director to drive activities
- Daily rhythm of Surveillance Cell, Outbreak Management Team co-ordinating action of LOCP 'cells' and Rapid Response teams

Key actions in the past month

Routine surveillance and Outbreak Management

- Ongoing daily Surveillance Cell, Outbreak Management Team and Outbreak Cell meetings to ensure local issues and outbreaks are managed appropriately.
- Review of capacity requirements and skill mix of the Outbreak Management structures, to cover increasing workload.

Local incident management teams

- Weekly Peterborough Incident Management Team to review the latest epidemiology and public health advice feeding into regular Peterborough Rapid Response team meetings to take local action working with communities
- Cambridge City Incident Management Team ongoing to maintain an overview of trends and cases and prepare for return of students
- Huntingdonshire incident management team convened to review general rise of cases in Huntingdonshire

Key actions in the past month

Universities

- Outbreak Plans for Anglia Ruskin University and Cambridge City University have been reviewed by public health team and signed off by the Director of Public Health, before submission nationally.
- There is ongoing close communication and joint work with both Universities - involving CCC/PCC public health and communications teams, Cambridge City Council, and Public Health England.

Schools

- Significant increase in the workload from schools. The Education Cell is providing advice and support for schools across Cambridgeshire and Peterborough. A new Department for Education helpline has also been introduced
- Head-teachers briefing and Q&A session, with updates from the Director of Education and Director of Public Health, was attended by over 250 participants and received positive feedback

Key actions in the past month

Care Homes

- Ongoing implementation and updating of the Care Home Support Plan, with renewed training on infection control and PPE use.

Workplaces

- Ongoing support to workplaces experiencing cases or outbreaks. Cross-border links where outbreaks outside our boundaries involve staff who are local residents

Events and openings

- District/City level Safety Advisory Groups review forthcoming events - public health specialist advice is sought for higher risk events.
- Further communication is planned to ensure that event organisers are made aware of good practice in organising Covid-19 safe events, and of the need for larger events to be considered by the District Safety Advisory Groups

Key actions in the past month

Peterborough Communities

- Peterborough Leader's Summit held on Friday October 2nd to recognise the excellent work done by local communities and services to keep Covid-19 rates stable in Peterborough, and to ask what actions we all need to take next. Live streamed on You-Tube.
- Joint strategy agreed by Peterborough City Council and Cambridgeshire Constabulary to engage, explain, encourage and enforce Covid-19 legislation in central Peterborough.

Local enhanced contact tracing

- Local enhanced contact tracing in Peterborough – ongoing high success rates with around 90% of cases handed on by national Test and Trace system successfully contacted

Key actions in the past months

Testing

- Ongoing challenges with national testing capacity impacting locally. Higher numbers of children using the testing system.
- Local system for essential key workers (including school staff) to access testing running successfully
- A Local Testing Centre in central Peterborough planned to open in mid-October, which will provide access for walk-in clients.

Planning for a winter surge

- Health Protection Board review of planning for a winter surge and identifying key priorities, including a focus on capacity and business continuity, communicating with communities, ensuring local preparedness, access to testing, and promoting flu vaccination for eligible groups.

CAMBRIDGESHIRE AND PETERBOROUGH LOCAL OUTBREAK ENAGEMENT BOARD

Updated: 4/11/20

Meeting date: 5th October 2020

Item	Topic	Action Lead	Action	Update	Status
1.	District Representation	Democratic Services / Liz Robin	The Democratic Services Officer and Director of Public Health to find a substitute or replacement member for Cllr Alex Malyon (South Cambs DC).	Councillor Bill Handley from South Cambridgeshire District Council had been appointed to the Board.	Complete
5.	Health Protection Board Report	Dr. Liz Robin	The Director of Public Health to check that University Centre Peterborough had been fully liaised with. The Director of Public Health to provide Members with a briefing note on the management of COVID-19 in universities.	The Board had been provided with a briefing note on the management of Covid-19 in universities.	Complete
7.	Campaign Updates	Val Moore	The Chair of Healthwatch Cambridgeshire to bring back information to the Board on the public's mood regarding public health measures from the perspective of Healthwatch	1. Your care during Covid' report is published on both Healthwatch sites, providing insights into what matters most, and lessons learned: Your care during Covid report 2. Healthwatch have found communications to be of	Complete

				<p>utmost importance to local people, particularly regarding shielding or access to their care. People do not differentiate between multiple sources of public health information and are exposed to an inconsistent stream according to their circumstances, which includes their specific needs and their access to media.</p> <p>3. Healthwatch offers its Community Values Panel to focus on questions set by commissioners, such as on campaign approaches. Thirty people selected to represent the demography of Peterborough and Cambridgeshire, are facilitated to get to the values and priorities beyond initial reactions.</p>	
--	--	--	--	---	--

Meeting date: 11th September 2020

Item	Topic	Action Lead	Action	Update	Status
4.	Health Protection Board Report	Ray Bisby	To advise the Chief Constable of the reported public perception of the police and the boards approach of a balance between education and enforcement.	Update 5.10.20 The Acting Police and Crime Commissioner to provide a more detailed breakdown of COVID-19 prosecutions in Cambridgeshire	Ongoing
4.	Health Protection Board Report	Dr. Liz Robin	Co-ordinate with democratic services to write to South Cambs DC regarding the attendance to the board of their representative. The option for other districts to be invited to supply a representative should be made.	The DPH is in contact with the Chief Executive of South Cambridgeshire District Council regarding District Council representation.	Complete

Agenda Item No.6

Communicating the new restrictions – an update for the Member Led Engagement board. November 6th 2020

Aim – to encourage people across Cambridgeshire and Peterborough to **reduce all non-essential contact with people outside their households**, to stop virus transmission, and with a view to our area starting December in the lowest possible ‘tier’.

Objectives

- Initially to stop a ‘beat the lockdown’ increase in socialisation this week
- Not confusing people by issuing lists of the new do’s and don’ts, we will promote national materials for this (there will be a translation focus on rules)
- To focus on asking people to consider how they can best reduce all non essential contact for the next four weeks, and why they should
- Communicate the support available to help residents (and staff) to help them do this
- Communicate the support available for vulnerable people and those who are self isolating
- Communicate the support available to help businesses and the self employed through this period (Peterborough mainly, but supporting and amplifying districts/City comms in Cambridgeshire to do this)
- Avoid confusion by removing all council produced materials which relate to previous rules and guidelines

Key messages

- **Don’t invite COVID home**
 - Reduce all non- essential contact with people you don’t live with – don’t spread the virus
 - Stay home as much as possible – except for education, exercise, essential shopping or work you can’t do at home – don’t spread the virus
 - Work from home where you can – don’t spread the virus
 - Where you can’t work from home – be even more Covid-secure (keep your distance, wash your hands, wear a face covering) don’t spread...
 - **Stop COVID in its tracks**
 - If you have symptoms only go out to get a test -remember you can do this by phone or email
 - If you test positive, self isolate for ten days – there is support available, there’s no reason not to
 - If you are a close contact of someone who tests positive self isolate for 14 days – there is support available, there’s no reason not to
- We’re working on this together**
- If you’re clinically extremely vulnerable there’s local help and practical support available to get you through
 - If you’re a business that has to shut, or you’re self-employed, we can point you to help and advice

- If you are on your own or a family that's struggling there's lots of local help
- By reducing the virus spreading we protect vulnerable people and our health services for everyone - and will get back to normal quicker

Methods /activity (examples of planned activity, these are likely to be added to weekly, will be supplemented by activity by all public sector partner organisations, and are subject to change)

w/b Nov 2

- Contributing to constabulary press release about FPNs over the weekend with a warning about pre lock down infringements
- **Don't wait til Thursday** message - Dr Liz Vlog/ contributing to partner comms with the same message (police?), comms to our own staff and partners, rapid response team and district council comms.
- Check all websites, intranets and social media and outdoor poster sites to make sure out of date messages are removed by Thursday am (or the end of the week)
- Prepare campaign message updates and toolkit - **Don't invite COVID Home, Stop COVID in its tracks, We're working on this together**
- Info on websites/social media about new support available for businesses and self employed (when guidance is received)
- Update leaflets with key messages /update Outbreak Management plan ready for re publishing on Friday – with a link to all district action plans.
- Prepare video script for community leaders (discuss key themes with community leaders/interfaith council on Weds and Thursday)
- Media Q&As on what council services are aren't still operating or key changes – out Weds and Thursday
- Media Q&As on schools arrangements (also being sent to schools via Education team)
- Media features on the work of the hub, support for CEV people, support for those self isolating (aim for these every week)
- Celebrating bonfire night differently – messages
- How Remembrance Day is being commemorated in a different way

w/b Nov 9th

- Commemorating Remembrance Day
- Continue with campaign themes – and promoting community leaders explaining them
- Personal stories– why local people who've had COVID are supporting the new guidelines
- Repurposed Radio ads – don't invite COVID home
- New poster and social media materials available
- Reminders of help available from the countywide and district hubs – stories of people helped and volunteers helping
- Christmas lights /Diwali
- Focusing on the work of Covid marshals

- Updating on Support for households in hardship (council tax relief)
- Updating on Wider homelessness advice (i.e. people won't be able to switch homes, but we'll still help those who are newly homeless)
- Focus on businesses which are supporting staff to work at home

w/b Nov 16

- Continue with campaign themes – and promoting community leaders explaining them
- Reminders of help available from the hub – stories of people helped and volunteers helping
- Celebrating Diwali differently
- Enhance test and trace across Cambridgeshire – why it's important, success in Peterborough?
- Update on how we are doing
- Focus on businesses which are still operating in a COVID secure way

w/b 23rd

- Continue with campaign themes – and promoting community leaders explaining them
- Reminders of help available from the hub – stories of people helped and volunteers helping
- Update on how we are doing

w/b 30th

- Next steps – what's happening from Dec 2.

Christine Birchall

Head of Communications – Cambridgeshire County Council and Peterborough City Council

November 4 2020