

Early Help Strategy

Sarah Ferguson, Service Director Enhanced & Preventative Services

2 July 2014



Early Help Strategy

- Development of a joint early help strategy for Cambridgeshire – Early Help discussion paper.
- Drivers for change - need and demand for services is changing and increasing in some areas e.g. SEND, reducing budgets, changing context.
- Core principles
- Emerging model
- Themes from multi agency events
- Proposed timeline
- Recommissioning of early help services within the County Council
- Questions



Early Help – Core Principles

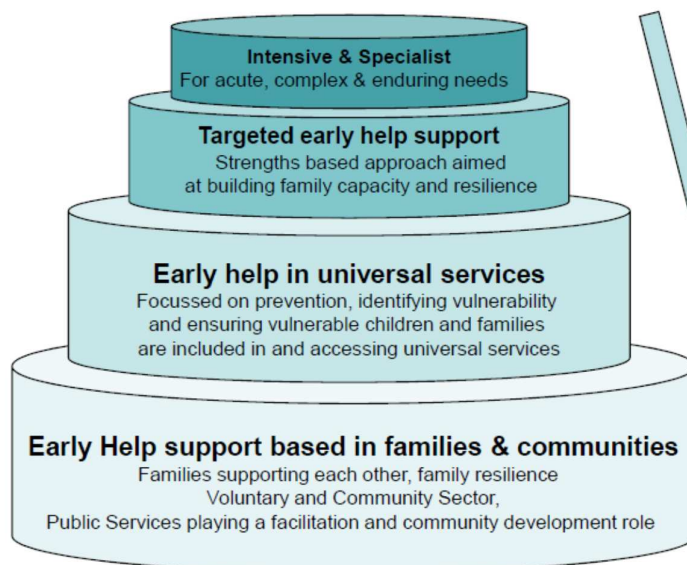
- Be based and designed within communities
- Support families as a whole; building on their strengths and creating resilience
- Be joined up and coherent across organisations and sectors
- Be flexible and creative, helping families with a wide range of issues
- Offer clear targeted support to the right families and demonstrate impact and evidence
- Provide a seamless interface with specialist services where required



Early Help – Emerging Model

A tiered model with increasing support for increasing levels of need and vulnerability.

But not a model based on referral from one tier to another – instead support always begins with the family and community as the base on which other support is built where needed.



Public Services should be providing support aimed at reducing the reliance on the top tiers, while strengthening the capacity of the lower tier



Key themes from multi agency workshops

- Supporting community and voluntary sector development
- Communication and information sharing
- Empowering, engaging and listening to families and young people taking a whole-family approach across organisations
- Joint commissioning and alignment of services, in particular aligning health and adult services into localities.
- Earlier intervention
- Focusing on transition points
- Workforce development



Timeline

April 2014	Early Help discussion paper
April – May 2014	Five multi agency stakeholder workshops
June – Oct 2014	Develop Early Help Strategy
November 2014	Early Help Strategy and action plan for approval by the Children's Trust Board Autumn 2014



Enhanced and Preventative Services - service redesign

- Running alongside the developing Early Help strategy is the recommissioning of early help services within the County Councils Enhanced and Preventative Services
- £3.6m savings to be delivered by April 2016

June - 4 July 2014

Informal Consultation

July - Oct 2014

Develop detail of functions and structures

Nov 2014 - Jan 2015

Formal consultation

April 2015 - April 2016

Implementation



Measures of success

- Foundation Stage Profile scores for children receiving Free School Meals improve
- Children with SEND are making expected progress
- Children who are most likely to stop attending, attend school
- Young people most at risk of not doing so make a good transition to employment, education and training
- Children and parents we work with tell us they are better able to cope
- Fewer families reach the threshold of significant risk of harm to children without being first identified and supported by preventative services



Themes of Enhanced and Preventative Services Consultation

- Working with partners to develop community resource – eg time banking/ volunteering/ parent networks
- Locality Team and Locality Manager as a focus – reduced and more targeted operational team
- Integrated Specialist SEND Services
- Strengthened expectation that most cases will have been assessed and intervened at a preventative level before referral made to Children’s Social Care – reinforcement of the use of CAF
- Maximising opportunities for greater alignment with other teams in and out of the Local Authority– eg community health services
- Workforce development is crucial – right person with the right tools



Discussion points and questions

- Consider and comment on the Early Help discussion paper
- Consider the summary of feedback from the multi-agency workshops and identify themes the Board would like developed
- Consider whether the board supports the strategic direction described and the intention to shift the focus of early help towards building resilient families and communities with a reduced direct offer of services
- The potential benefits and risks of such an approach
- What would need to be different for this community and strengths based model to succeed
- The specific opportunities for trust partners to collaborate or align work and teams in taking forward this work
- The role of the Children’s Trust in championing the Early Help Strategy
- The proposed next steps



Contact details

Sarah Ferguson, 01223 729099, sarah.ferguson@cambridgeshire.gov.uk

General contact point: earlyhelp@cambridgeshire.gov.uk

Further information on the Early Help review available at:
http://www.cambridgeshire.gov.uk/info/20076/children_and_families_practitioners_and_providers_information/370/providing_children_and_families_services/10

