

CPFT – Update January 2025

Steve Grange

Chief Executive Officer



Pride in our care

Cambridgeshire and Peterborough NHS Foundation Trust

Our Principled Approach to Strategy

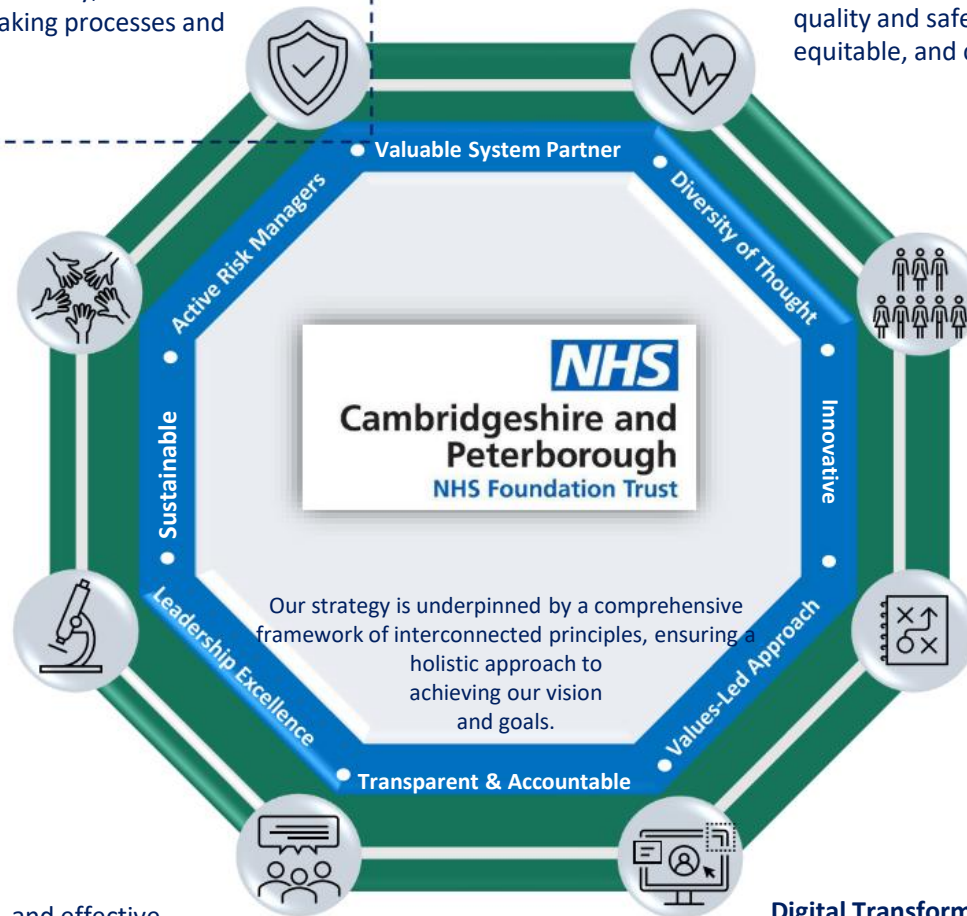
HPOP

★ Good Governance. We are committed to robust governance practices that ensure transparency, accountability, and compliance. This underpins all decision-making processes and fosters trust among stakeholders

Co-production and Lived Experience to Inform Approaches. The voices of those with lived experience are central to shaping our policies and services. Through co-production, we ensure that our strategies reflect the real-world needs and insights of our community.

Research and Innovation. We are committed to evidence-based practices, driving progress through research and the application of innovative solutions. Continuous learning and adaptation are essential to our success

Good Communication. Transparent, timely, and effective communication is key to building trust, engaging stakeholders, and ensuring alignment across the organization.



Quality & Safety. Delivering excellence in all services is a priority. We are dedicated to maintaining high standards of quality and safety, ensuring that our services are effective, equitable, and centered around the needs of those we serve.

People, Culture & Organisational Development. Our workforce is our greatest asset. We strive to foster an inclusive, supportive, and empowering environment, investing in professional development and promoting a culture of collaboration and innovation.

Strategic Planning, Business Development and Performance. A forward-thinking approach to strategic planning ensures our long-term sustainability and growth. We focus on setting clear objectives, monitoring performance, and seizing opportunities for business development that align with our mission.

Digital Transformation. Harnessing the power of technology, we aim to streamline operations, enhance user experiences, and support innovation. Digital solutions are integral to delivering accessible and efficient services for our patients.