

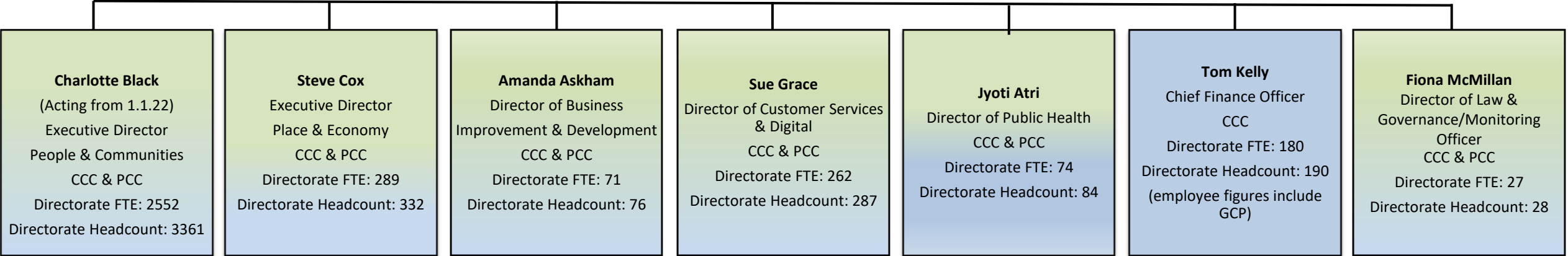
Structure Chart showing tier one to three senior managers. Employee numbers shown by Full Time Equivalent (FTE) and Headcount

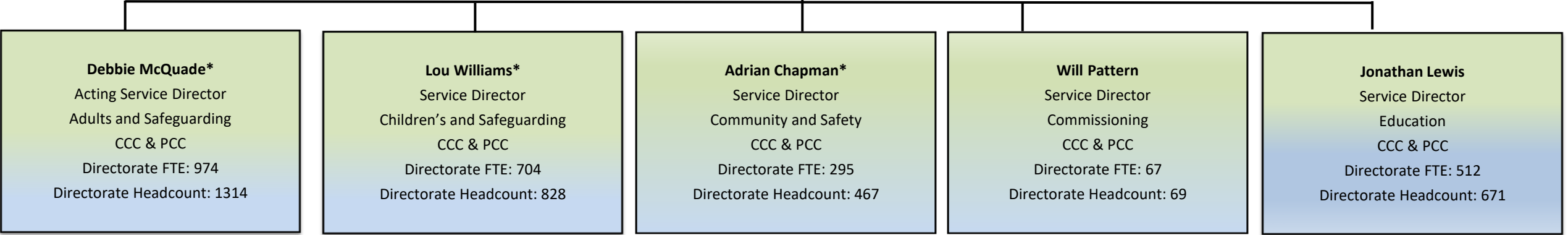
Employee headcount and FTE figures correct as at 31st December 2021

Colour denotes position shared between Peterborough City Council and Cambridgeshire County Council

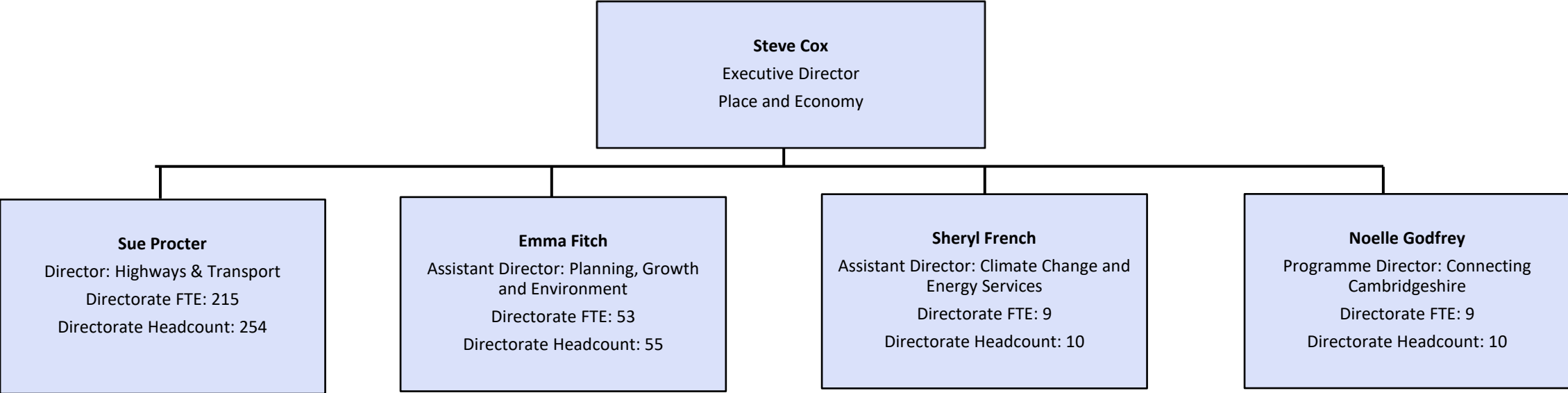
Colour denotes that position has Cambridgeshire only remit

Chief Executive
Amanda Askham Acting CEX from 1.1.22
Stephen Moir from 21.2.22
Council FTE: 3455
Council Headcount: 4358





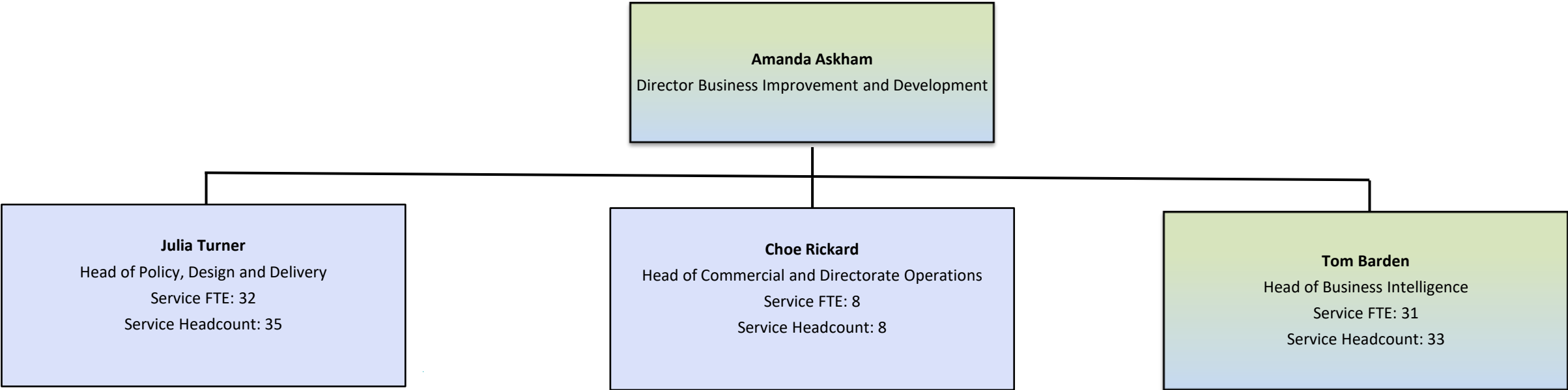
*Denotes that postholder is employed by Peterborough City Council
An additional 6 FTE (12 employees) sit in an executive support team within this structure)

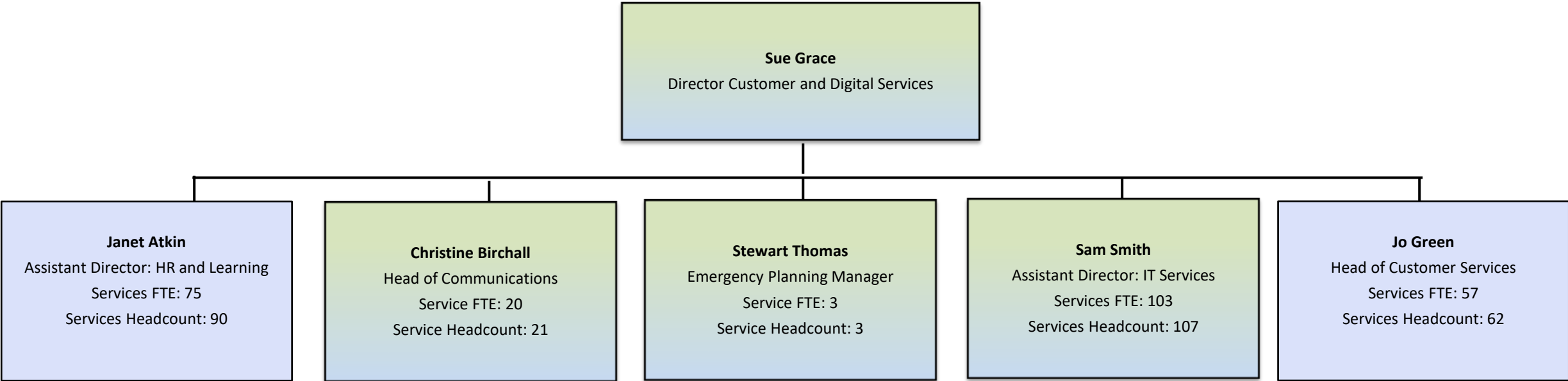


An additional 3 FTE (3 employees) sit in an executive support team within this structure

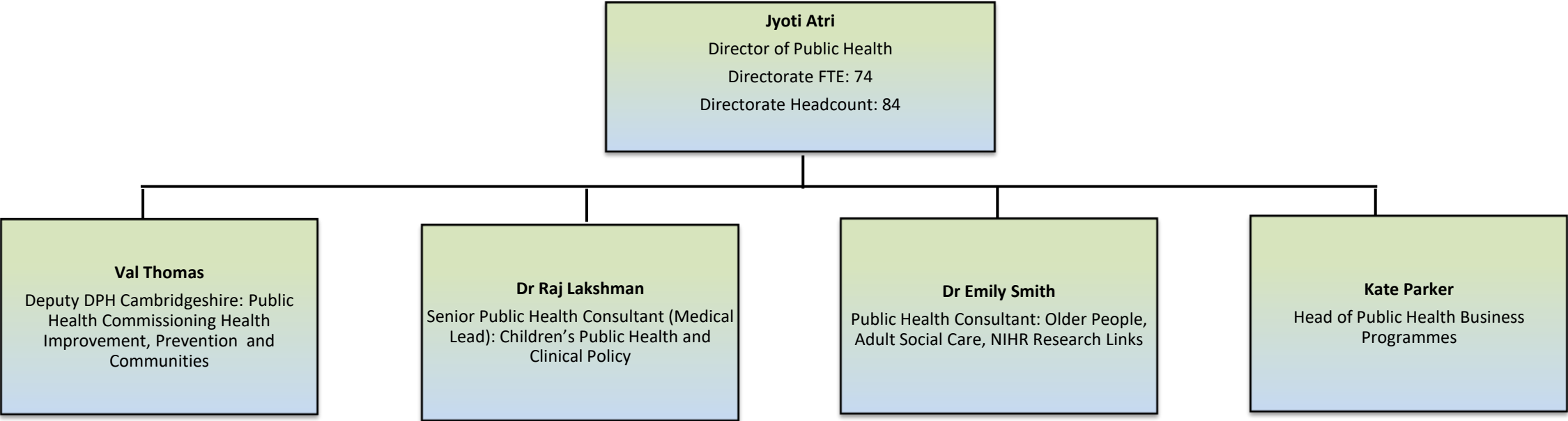
Business Improvement and Development

Showing Structure to Head of Service Level (tier 3) with employee numbers by Full Time Equivalent (FTE) and Headcount



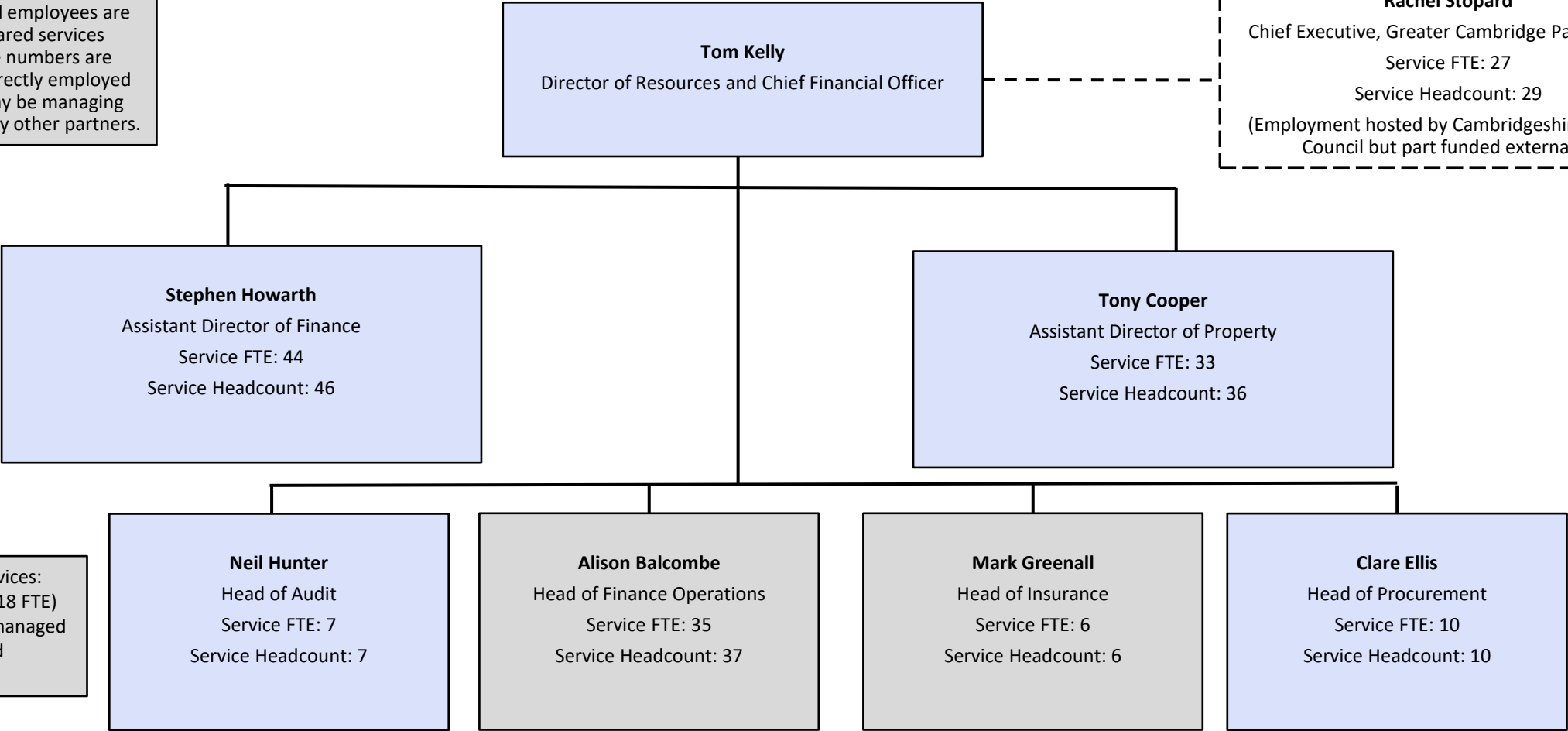


An additional 4 FTE (4 employees) sit in an executive support team within this structure)

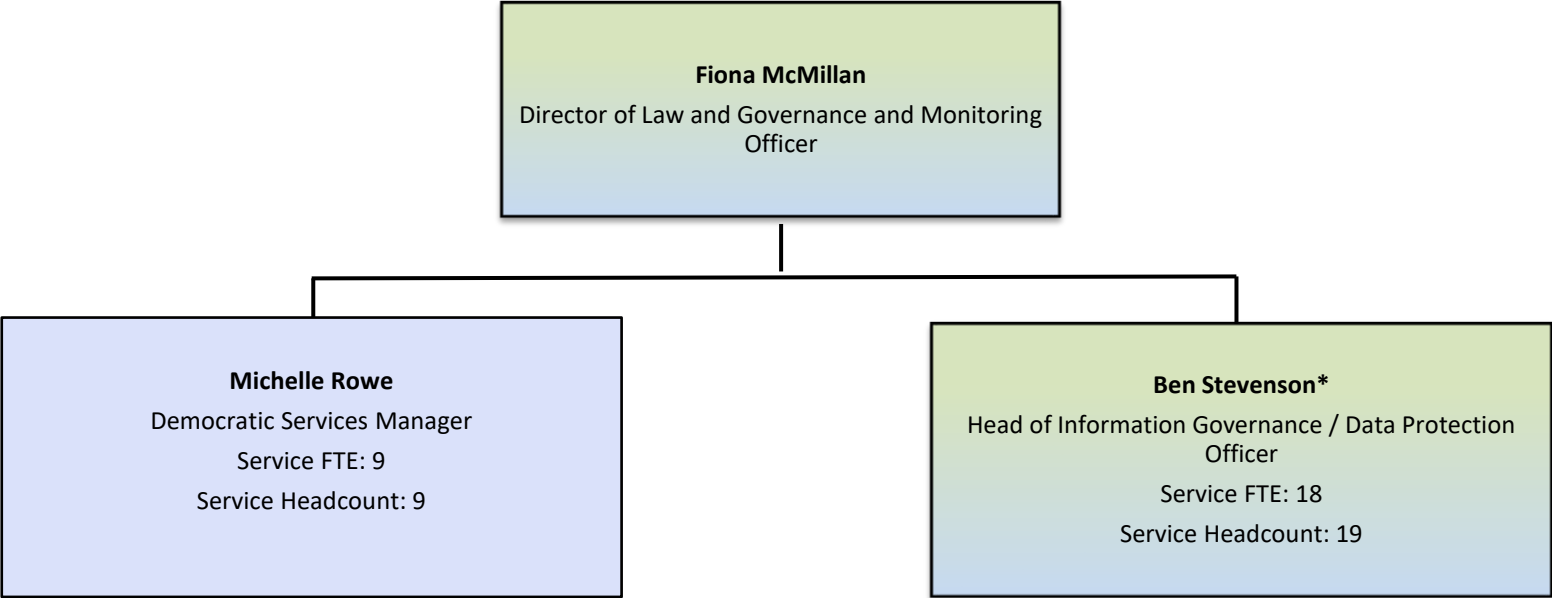


Colour denotes that posts are shared with other local authorities and employees are working as part of a shared services arrangement. Employee numbers are representative of those directly employed by CCC, but managers may be managing additional staff employed by other partners.

Rachel Stopard
Chief Executive, Greater Cambridge Partnership
Service FTE: 27
Service Headcount: 29
(Employment hosted by Cambridgeshire County Council but part funded externally)



Lead Authority Shared Services:
Additional 19 employees (18 FTE)
sit in this directorate but managed
by partners under a shared
services arrangement



*Denotes that postholder is employed by Peterborough City Council