

TENISON ROAD – ZEBRA CROSSING PROVISION

To: **Cambridge City Joint Area Committee**

Meeting Date: **14th March 2017**

From: **Executive Director: Economy, Transport & Environment**

Electoral division(s): **Petersfield**

Forward Plan ref: **N/A** *Key decision:* **No**

Purpose: **To determine whether the zebra crossing proposed for Tenison Road as part of the approved traffic calming scheme should be implemented as approved by this Committee on 25th March 2015.**

Recommendation: **a) To approve implementation of the zebra crossing as identified in feature option 6 and in accordance with the original scheme approval on 25th March 2015.**

<i>Officer contact:</i>	
Name:	Richard Lumley
Post:	Head of Service (Highways)
Email:	richard.lumley@cambridgeshire.gov.uk
Tel:	01223 703839

1. BACKGROUND

- 1.1. This scheme was approved for implementation by the Cambridge City Joint Area Committee on 25th March 2015. This followed a significant period of consultation and development, led by a project steering group made up of local residents, Councillors and key stakeholders.
- 1.2. The full details of the scheme and the process that was followed can be found in the report that was presented to the March 2015 Committee. This requested the approval of five features from nine options that formed the basis of the public consultation, which were recommended by the project steering group and subsequently approved by the Committee.
- 1.3. The scheme has now been constructed, with the exception of the zebra crossing, which is proposed to be installed on a raised table close to Canon's Green in accordance with feature option 6. The original consultation information for feature option 6 can be found in appendix A of this report.

2. MAIN ISSUES

- 2.1 Divisional County Councillor Ashley Walsh has requested that the installation of the zebra crossing be put on hold, following concerns raised by a group of fourteen residents that live adjacent to, or in general proximity to the proposed crossing location.
- 2.2 This is on the basis that the information included in the original consultation was not clear and did not include detailed designs that illustrate the layout of a standard UK specification zebra crossing.
- 2.3 The proposal to include tactile paving, belisha beacons and zig-zag lines at this location were therefore not understood by this group of residents and are not supported.
- 2.4 The concept sketch designs that were included in the consultation for this option aimed to highlight the use of materials to define the feature area and didn't include every piece of highway furniture. Schemes do not generally commence detailed design until the necessary approvals have been provided.
- 2.5 Whilst all of the street furniture and carriageway markings weren't shown, the text clearly stated that a zebra crossing was proposed at this location.
- 2.6 Significant support for the provision of a zebra crossing at this location was evident throughout the consultation, particularly from representatives of vulnerable groups, such as the City Council's Disability Access Panel.
- 2.7 Feature option 6 was the most supported of all of the options presented as part of the public consultation.
- 2.8 This project gave local residents the opportunity to have a real influence over what measures were implemented along Tenison Road, following the specific allocation of developer contributions amounting to £500,000 from the nearby CB1 development.

- 2.9 The desire to see a controlled facility for crossing the road at this point led the project steering group to prioritise its provision within the budget allocated to the scheme, which was ultimately supported by this Committee.
- 2.10 Any formal assessment to demonstrate the need for a controlled crossing was therefore not completed, such as the completion of a PV² survey [which looks at the number of pedestrians in relation to the number of vehicles]. These surveys can be used to quantify the need and therefore prioritise locations when the demand for crossings exceeds the authority's ability to provide funding. They are not a legal requirement.
- 2.11 A Stage 2 Road Safety Audit was completed and no issues were raised by the independent auditors, which is a key requirement for the provision of controlled crossing.
- 2.12 No objections were received to the provision of a zebra crossing at this location during either the informal public consultation or the formal notice of intent process, which provides further advertisement in the local newspaper and on street.
- 2.13 The raised table has already been constructed with partial completion of the tactile paving. The provision of the zig-zag lined controlled zone required for a zebra crossing has not been installed, along with the other associated lining and belisha beacons. Uncontrolled parking is therefore currently taking place on the western side of the street, which is causing significant issues for the safe movement of vehicles along the street.

3. ALIGNMENT WITH CORPORATE PRIORITIES

3.1 Developing the local economy for the benefit of all

There are no significant implications for this priority.

3.2 Helping people live healthy and independent lives

Improvements to the environment and access may encourage more people to walk and cycle along the route.

3.3 Supporting and protecting vulnerable people

The provision of a controlled crossings are highly valued by vulnerable road users.

4. SIGNIFICANT IMPLICATIONS

4.1 Resource Implications

All costs associated with the scheme are being met by developer funding.

4.2 Statutory, Risk and Legal Implications

There are no significant implications within this category.

4.3 Equality and Diversity Implications

The provision of a controlled crossing provides an inclusive facility for all road users, particularly for more vulnerable users.

4.4 **Engagement and Consultation Implications**

Details of community engagement and consultation are detailed in the original Committee report from 25th March 2015.

4.5 **Localism and Local Member Involvement**

County Councillor Walsh has been heavily involved in the scheme and supports the implementation of the crossing.

4.6 **Public Health Implications**

There are no significant implications within this category.

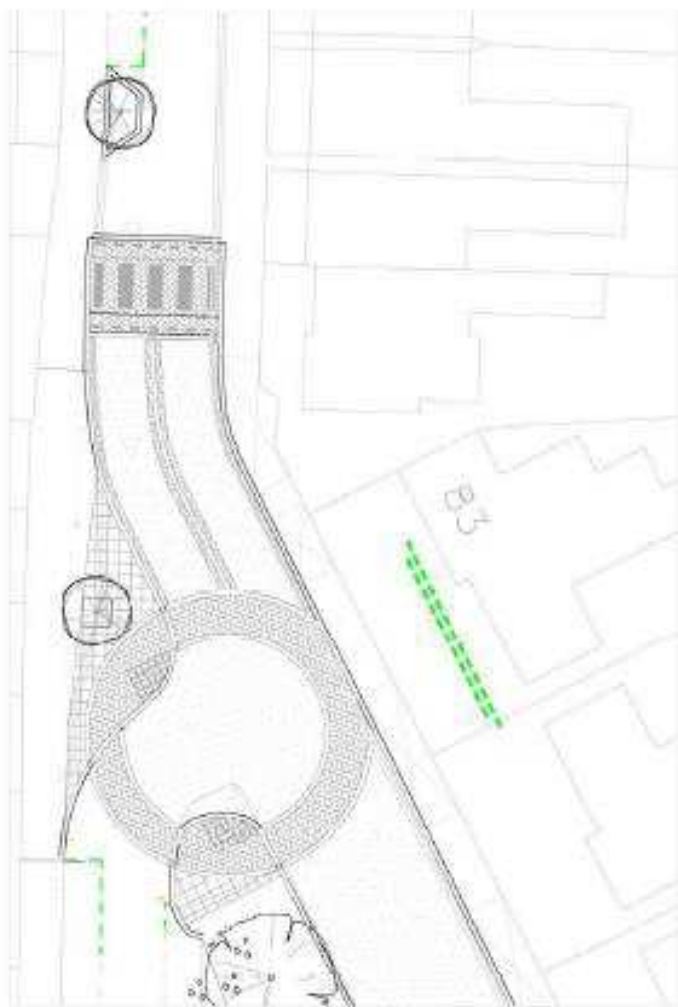
Source Documents	Location
Survey Responses, letters and e-mails. Minutes of steering group meetings.	Room 209 Shire Hall Castle Hill Cambridge CB3 0AP
Tenison Road Scheme Approval Report Cambridge City Joint Area Committee 25 th March 2015	Cambridgeshire County Council Website https://cmis.cambridgeshire.gov.uk/ccclive/Meetings/tabid/70/ctl/ViewMeetingPublic/mid/397/Meeting/251/Committee/11/Default.aspx

APPENDIX A

Original consultation information for feature option 6

Masterplan reference: 6

Tenison Road Canon's Green



Slow traffic approaching corner
Use place making design to break up linear carriageway and increase driver awareness

Reduce drifting across the road
Introduce carriageway definition around corner to improve lane discipline


Improve quality of streetscene
High quality materials and creative design, relating to green space and altered junction layout

Provide pedestrian zebra crossing
Provide Zebra at well used crossing point. New parking spaces also possible just north of this crossing point.

Illustrative sketch of proposals, looking South



This document is the property of the City of Cambridge. It is to be used for the purposes of the project only and is not to be distributed outside the project. It is to be kept secure and not to be used for any other purpose. It is to be kept secure and not to be used for any other purpose. It is to be kept secure and not to be used for any other purpose.

 <p>CAMBRIDGE CITY COUNCIL</p>	<p>ENVIRONMENT DEPARTMENT ENVIRONMENTAL PRODUCTS</p> <p>Simon Phipps Principal of Environmental Cambridge City Council PO BOX 200, Cambridge CB1 0UB Tel: 01223 457000 or 457001</p>	<p>JOB Title</p> <p>Tenison Road consultation</p>	<p>Scale</p> <p>N/A</p>	<p>A2</p>	<p>Designed DJ</p> <p>Drawn DJ</p>	<p>Notes</p> <p>DO NOT SCALE Please do not scale drawings to match dimensions</p>			
		<p>Drawing Title</p> <p>N/A</p>	<p>Date created</p> <p>MAY 2014</p>	<p>Checked JR</p> <p>Approved JR</p>					
		<p>Drawing No.</p> <p>N/A</p>	<p>Rev.</p> <p>000001</p>						
							Rev	Revision Note	Date