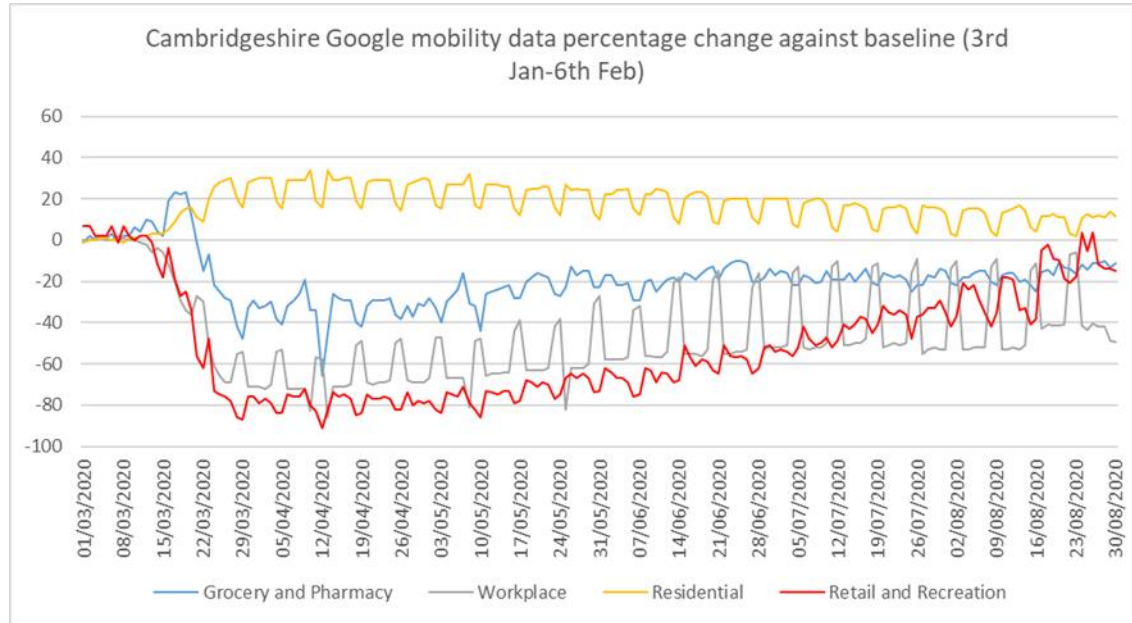


Covid-19 update from Health Protection Board

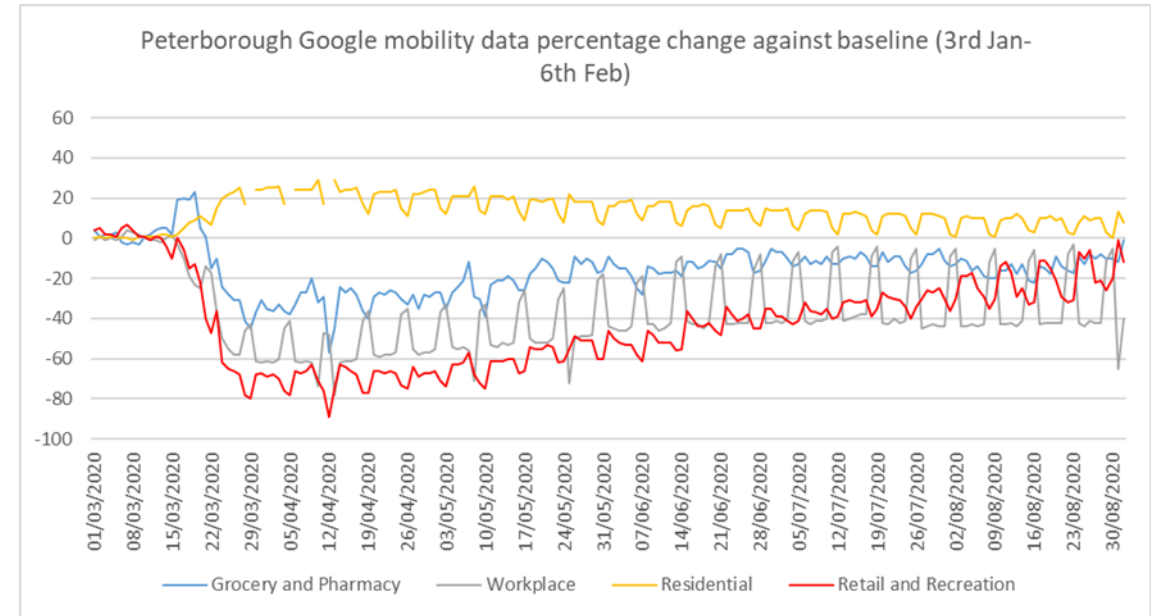
<https://www.peterborough.gov.uk/asset-library/PCC-CCC-Local-Outbreak-Control-Plan.pdf>

<https://www.peterborough.gov.uk/asset-library/PCC-CCC-Local-Outbreak-Plan-Roles-and-responsibilities.pdf>

Mobility: Workplace visits rising in Cambridgeshire, more stable in Peterborough



- **Retail and recreation** visits in Cambridgeshire are now **12% lower than the baseline**.
- **Grocery visits** have **become 3.5% closer to the baseline** in the 7 days to 1st September compared to the 7 days prior.
- **Workplace visits** were **11% closer to the baseline** in the last 7 days compared to the 7 days before, but still considerably lower.



- **Retail and recreation** visits in Peterborough have increased in the 7 days to 1st September to **15.5% below the baseline**, compared to 20.5% below in the 7 days prior.
- **Grocery visits** in the 7 days to 1st September were **5.5% closer to the baseline** than the 7 days before and are now only **8.5% below the baseline**.
- **Workplace visits** were **3.5% further from the baseline** in the most recent 7 days compared to the 7 days prior.

UK cases increasing rapidly, new rules introduced

Cases

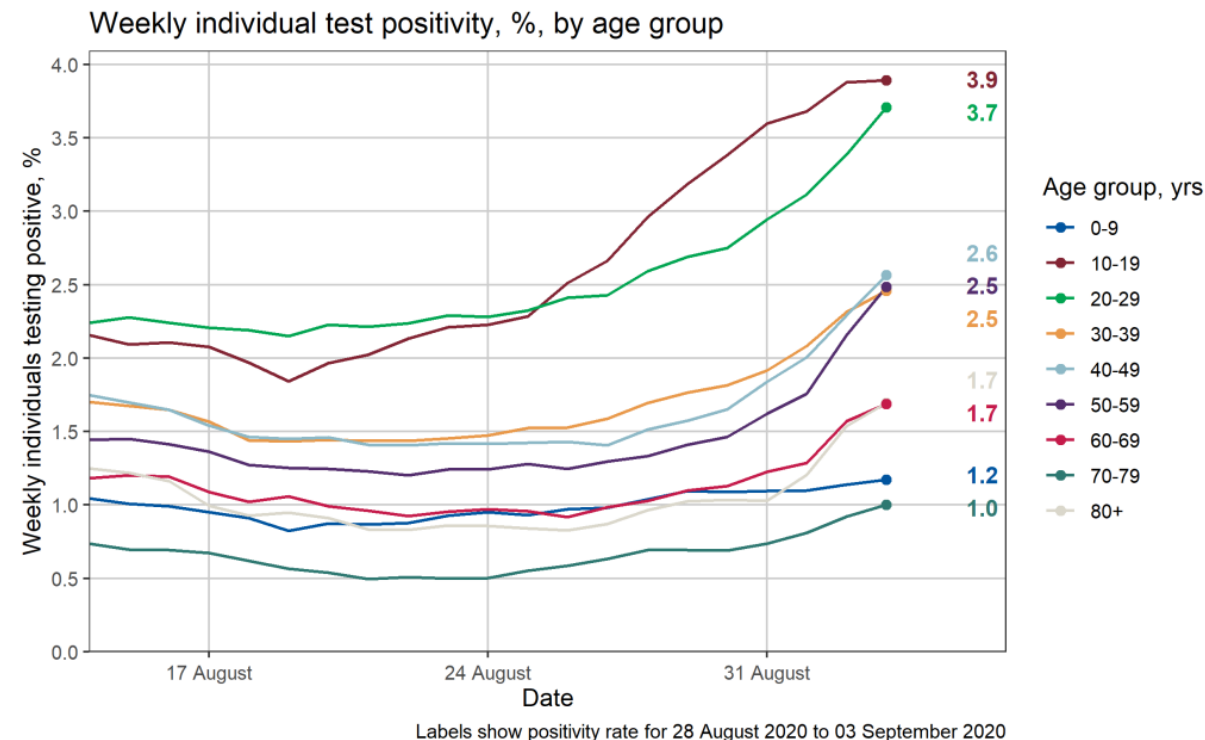
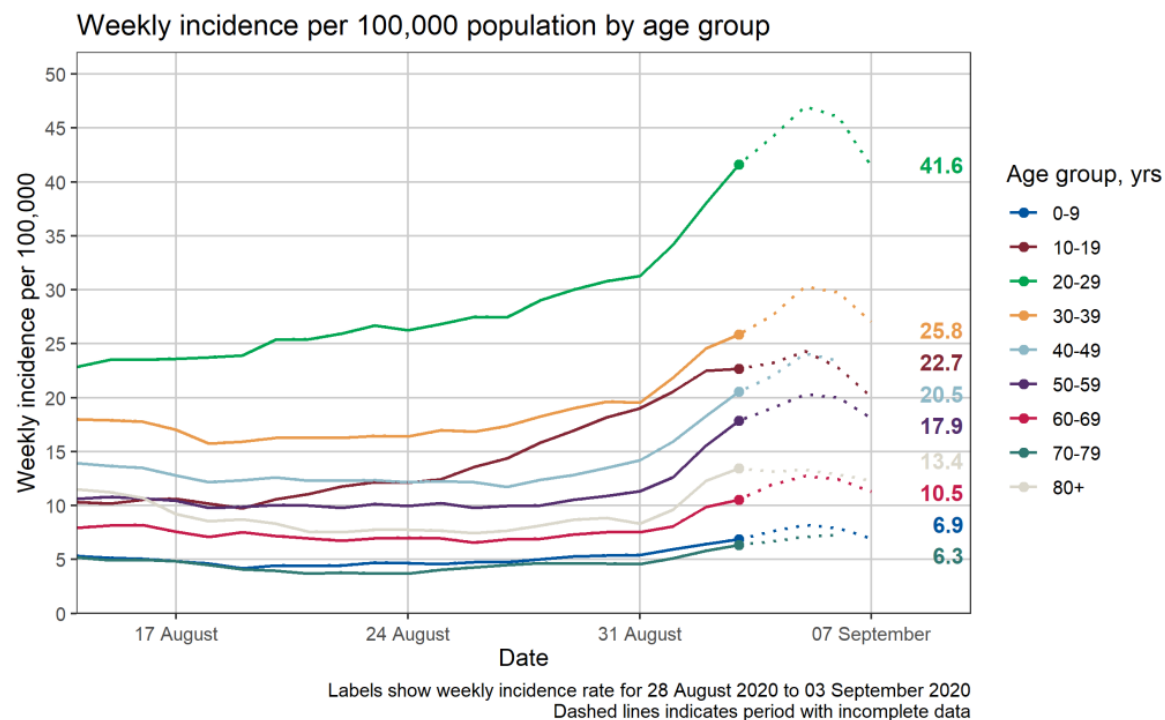


In the last week, cases have risen from 12.5 infections per 100,000 people to 19.7 per 100,000 across the UK, most prevalent in young adults.

New social distancing rules introduced

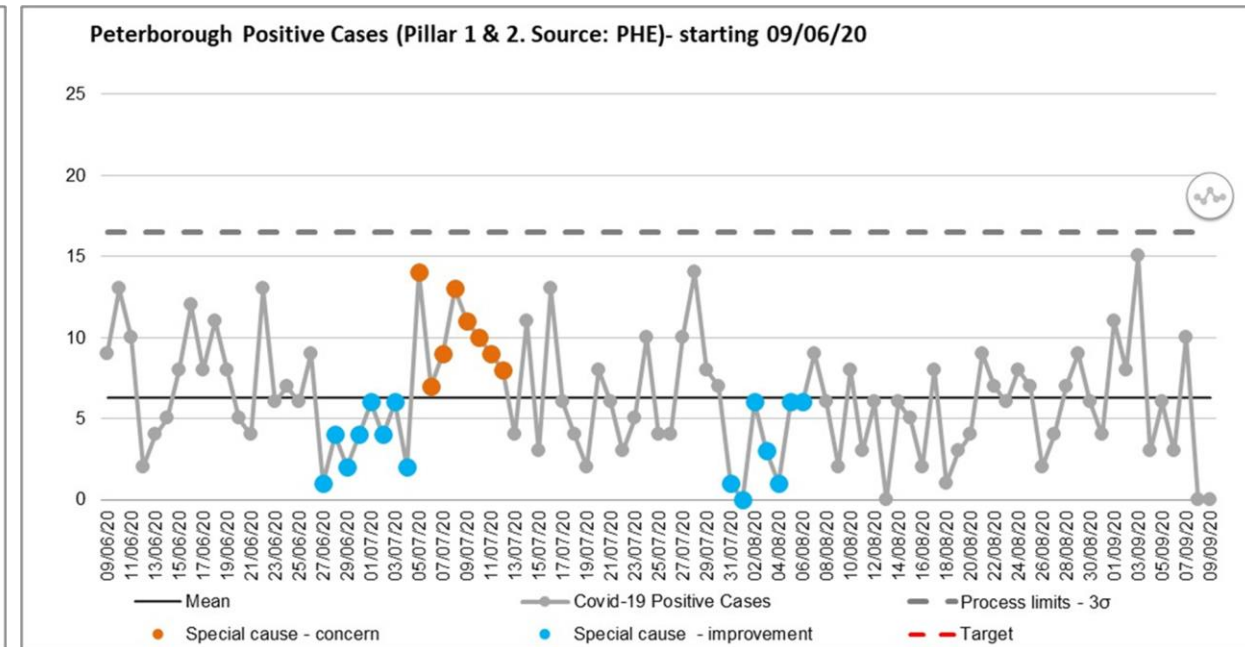
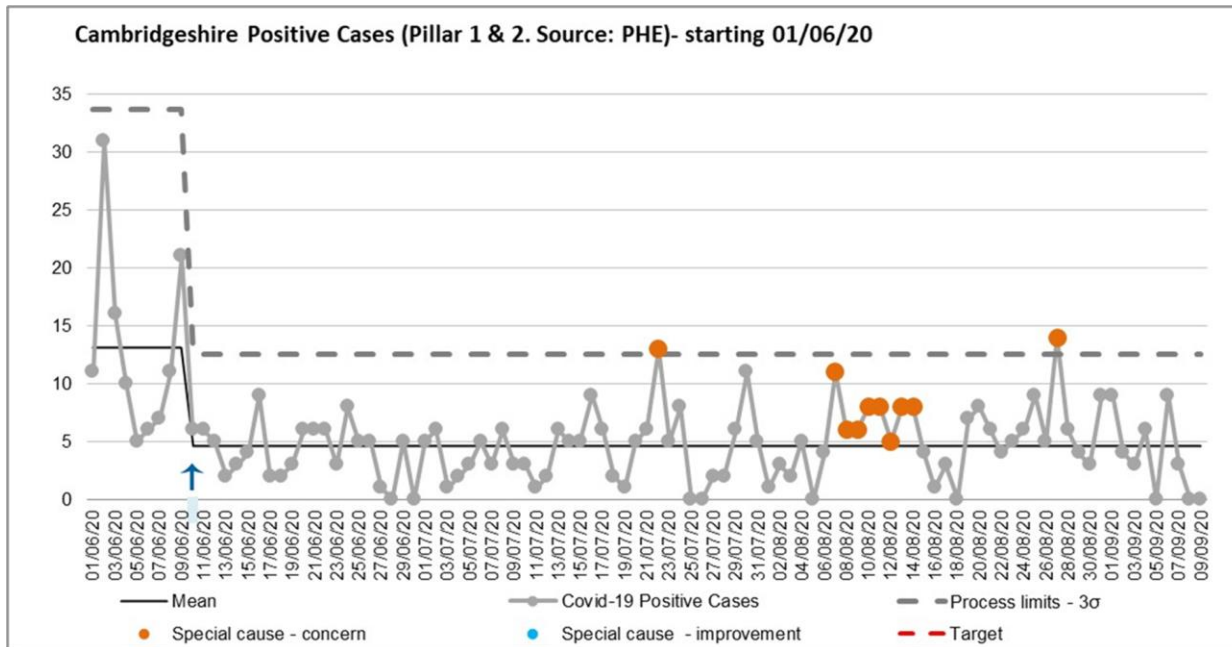
- Rule of 6
- Pubs and restaurants legally required to request contact details
- "Covid-secure marshals" will be introduced to help ensure social distancing in town and city centres

National patterns show increased incidence and positivity rates in children and young adults



- National weekly incidence and positivity rates show continued increases in both 20-29 years and 30-39 year age groups

Case numbers in Peterborough looking similar to mid July



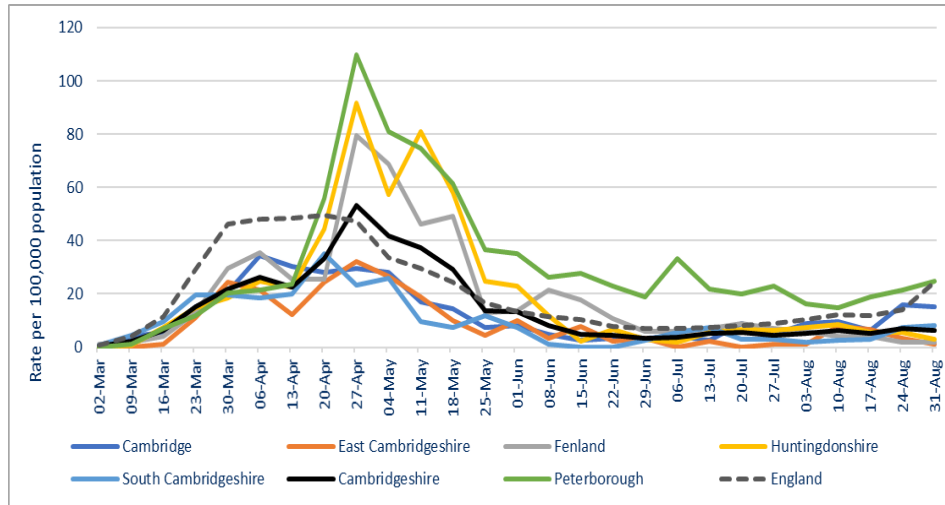
SPC charts monitor trends over time and plot whether data differ consistently in comparison to previously observed numbers of positive cases. Cases may be added to this data, especially in the most recent points

Cambridgeshire: since the 15/08 there has been one alert on the 27/08 (with 12 positive cases), many of the positive cases are within Cambridge City and South Cambridgeshire, mainly in young adults in both districts

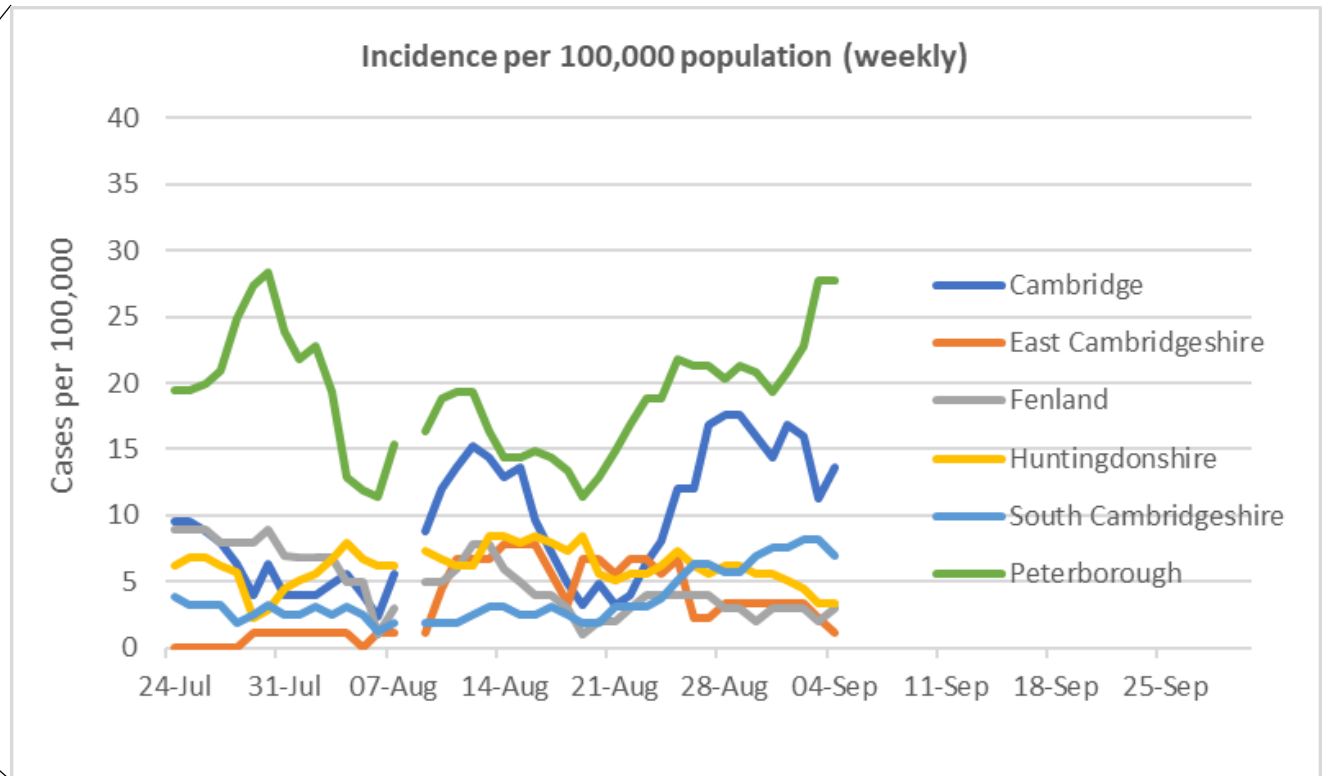
In Peterborough, family household clusters identified as a key current route of transmission currently, with fewer identified workplace outbreaks.

Incidence rates per 100,000

Incidence rates since March



Incidence rates since 24th July



Peterborough continues to have both the highest incidence rate within Cambridgeshire & Peterborough and has increased in the last week

Although the other districts remain relatively stable Cambridge City has decreased from a peak of 17.6 per 100,000 on 29th August to 13.6 per 100,000 on the 4th September.

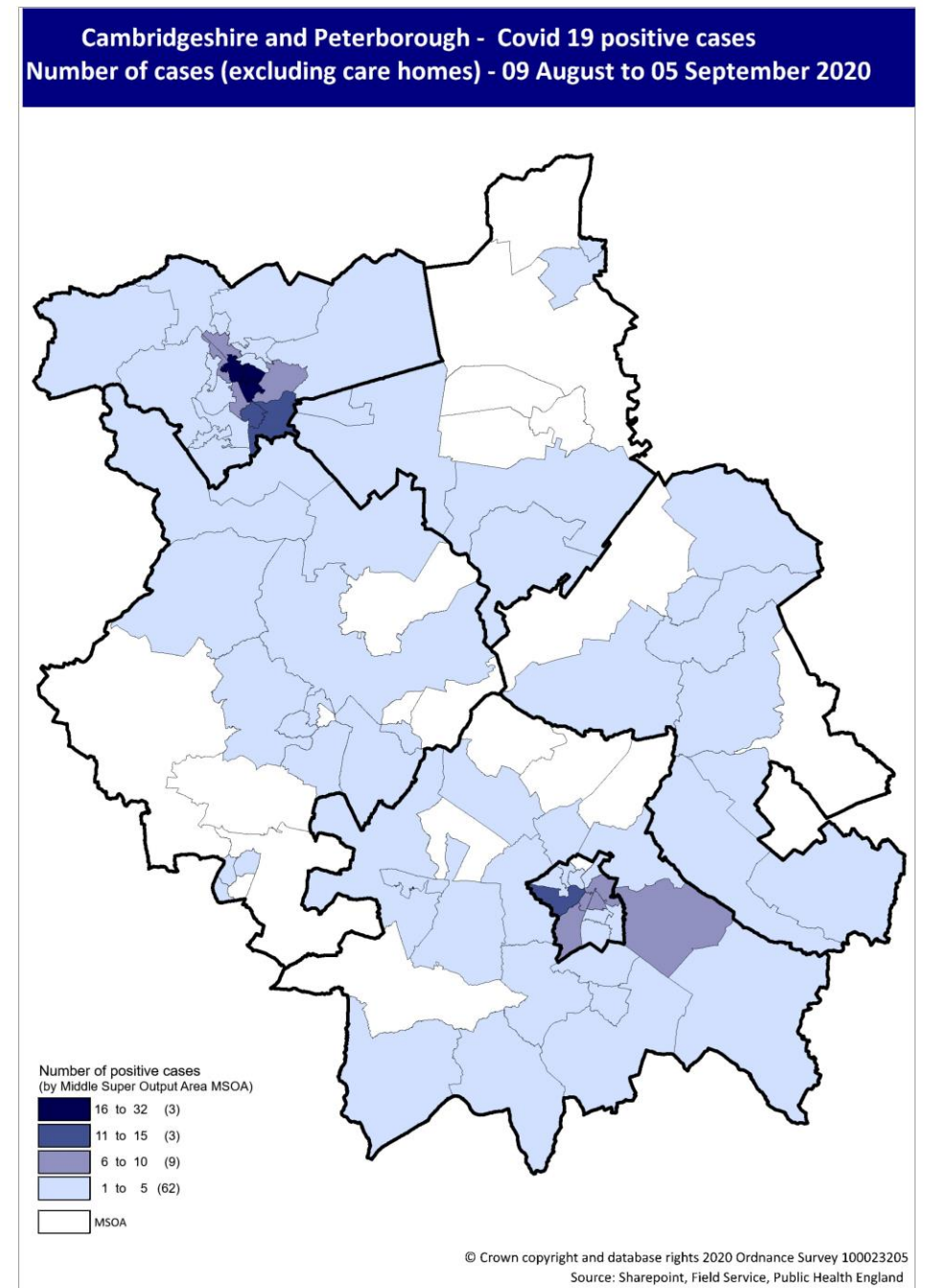
Peterborough continues to have the highest percentage of individuals testing positive (3.8%) within Cambridgeshire and Peterborough, with positivity rates mainly reflecting incidence rate patterns

Cambridgeshire and Peterborough map showing variation in numbers of Covid-19 cases (09 Aug – 05 Sep) by MSOA

Central Peterborough and Cambridge have the highest numbers of Covid-19 positive cases over the most recent 4 weeks (09 August – 05 September – darker blue shading).

Lighter shading refers to smaller numbers of cases observed in a number of areas across Cambridgeshire & Peterborough.

MSOA – Middle Super Output Area – geographical areas with similar population size (around 7,000 people) to enable comparisons



Covid-19 and all-cause mortality

ONS reporting Week 35 (ending Friday 28 August 2020):

DEATHS

- **1 Covid-19 related deaths** occurred in Cambridgeshire and Peterborough in ONS reporting week 35 (in Peterborough).
- There were **84 all-cause deaths** in Cambridgeshire and Peterborough (down from 117 in week 34).
- At a district level, **all districts** had decreases in all-cause deaths compared to the previous week.

EXCESS DEATHS

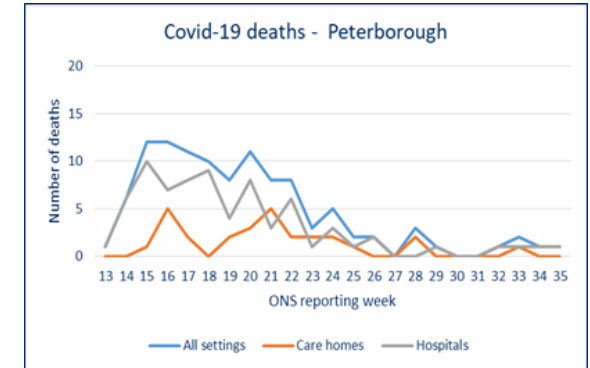
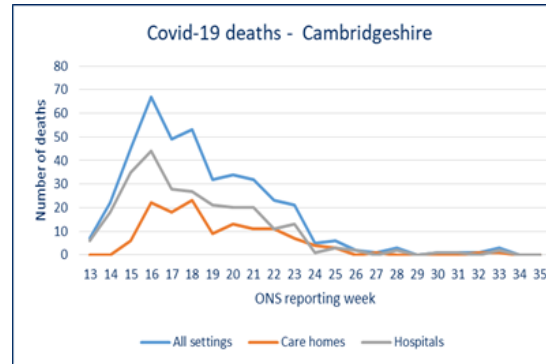
- The number of **all-cause deaths is below the 2014-18 average in Cambridgeshire, Peterborough, and all of the districts** for week 35.
- The number of **all-cause deaths in care homes are below the 2014-18 average in Cambridgeshire and Peterborough**. Numbers are also below, or similar (Cambridge and South Cambridgeshire), to the 5-yr average in each of the five Cambridgeshire districts.

Source: ONS, provided by PHE

DEATH TRENDS – Cambridgeshire and Peterborough

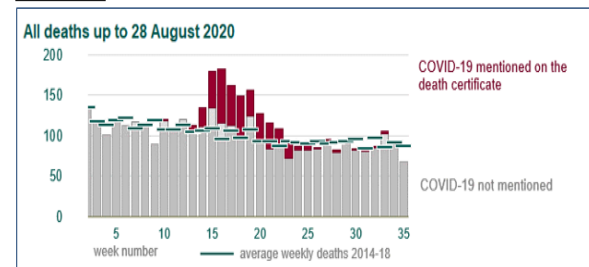
Please note the y-axis on the charts have different values

COVID-19 RELATED DEATHS

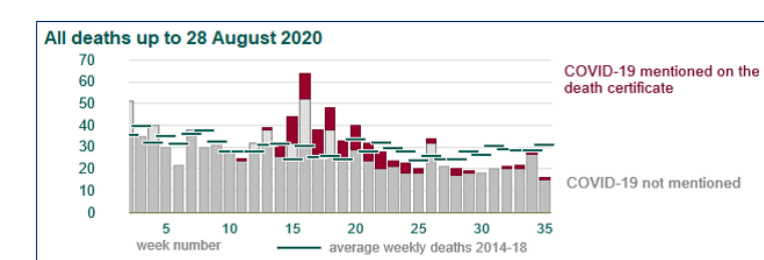


ALL CAUSE EXCESS DEATHS

Cambridgeshire



Peterborough



Source: ONS, published 08 September

Governance

- Cambridgeshire & Peterborough Local Outbreak Engagement Board, co-chaired by the HWB Board Chairs, meets monthly and provides political leadership
- Multi-agency C&P Health Protection Board chaired by the DPH meets weekly supported by a Programme Delivery Group for strategic focus on delivering the Local Outbreak Control Plan
- C&P Strategic Co-ordinating Group Executive co-chaired by the CCC/PCC and CCG chief executives meets weekly (or more frequently) to cover wider system working and mobilisation
- Internal CCC/PCC Test and Trace Gold meets 3 x weekly – CEO, DPH, Corporate Director, Communities Director, Comms Director to drive activities
- Daily rhythm of Surveillance Cell, Outbreak Management Team co-ordinating action of LOCP 'cells' and Rapid Response teams

Key actions in the past month

Routine surveillance and Outbreak Management

- Ongoing daily Surveillance Cell and Outbreak Management Team meetings to ensure local issues and outbreaks are managed appropriately.

Local incident management teams

- Weekly Peterborough Incident Management Team to review the latest epidemiology and public health advice
- Regular Peterborough Rapid Response team meetings to take local action working with communities
- Cambridge City Incident Management Team convened to review rise in cases amongst 18-30 year olds and agree actions

Key actions in the past month

Education

- Work with universities (Anglia Ruskin University and Cambridge University) to ensure appropriate risk assessments and plans are in place for return of students
- Providing advice and support for schools across Cambridgeshire and Peterborough

Care Homes

- Ongoing implementation of the Care Home Support Plan and infection control training

Workplaces

- Ongoing support to workplaces experiencing cases or outbreaks. Cross-border links where outbreaks outside our boundaries involve staff who are local residents

Key actions in the past month

Local enhanced contact tracing

- High success rates – between 80% and 90% of cases handed on to Peterborough Environmental Health Officers from the national Test and Trace system are contacted and interviewed.

Events and openings

- District/City level Safety Advisory Groups review forthcoming events - public health specialist advice is sought for higher risk events.

Testing

- Current pillar 2 testing situation, communications with the public and access to testing for key workers

Planning for a winter surge

- Includes consideration of workforce business continuity plans, flu vaccination, PPE and testing