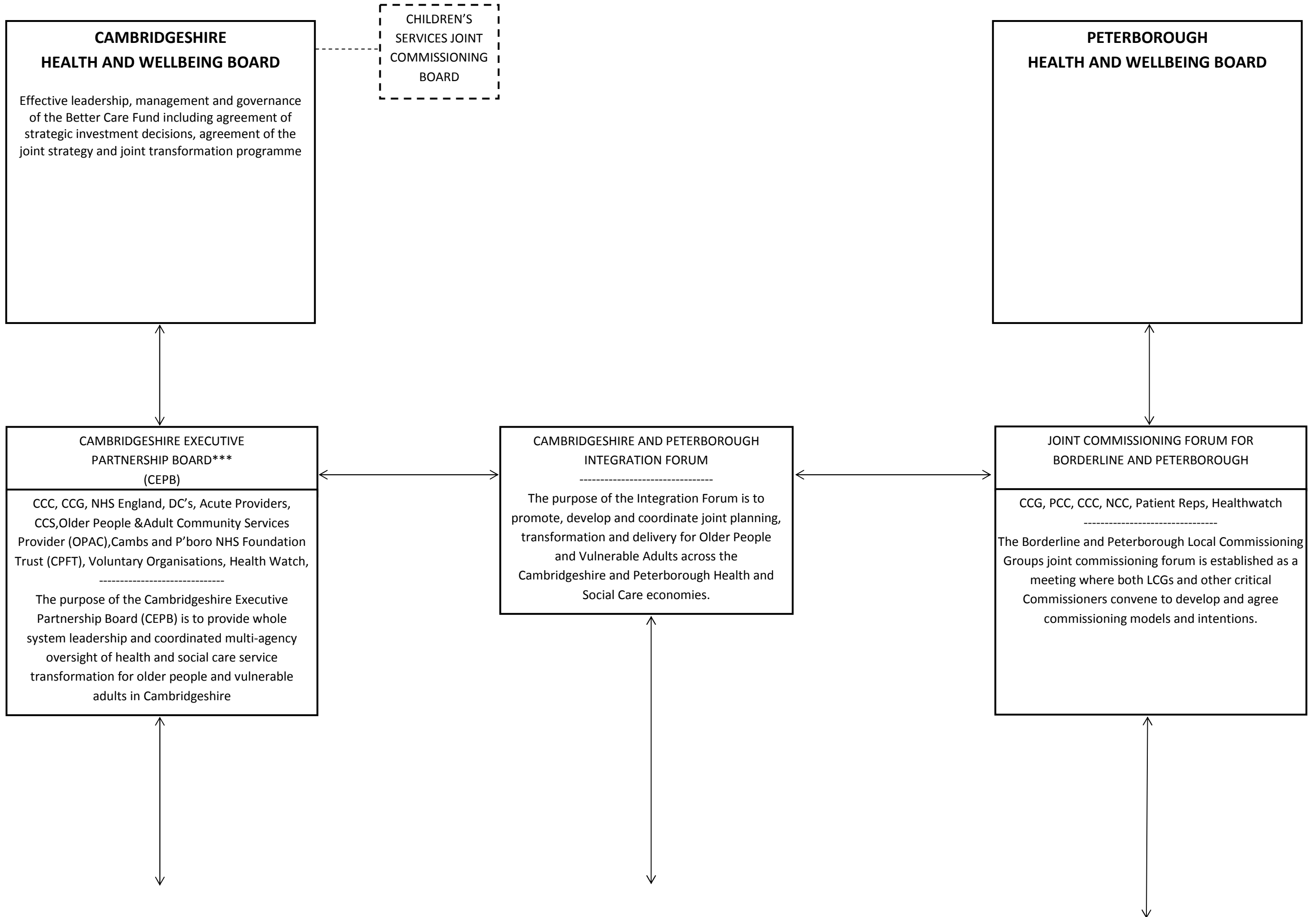
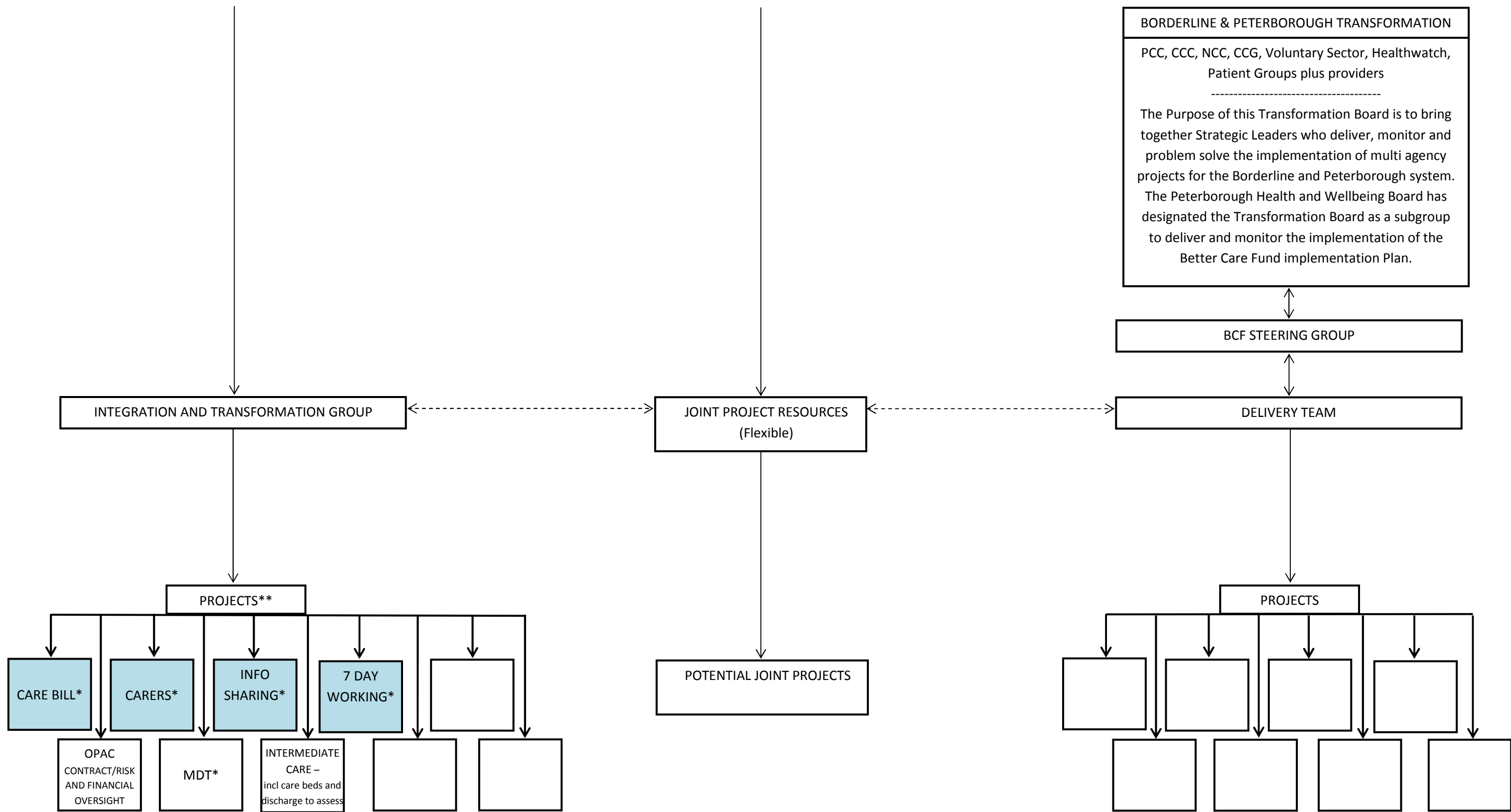


GOVERNANCE ARRANGEMENTS INCLUDING JOINT COORDINATION WITH PETERBOROUGH





BORDERLINE & PETERBOROUGH TRANSFORMATION

PCC, CCC, NCC, CCG, Voluntary Sector, Healthwatch, Patient Groups plus providers

The Purpose of this Transformation Board is to bring together Strategic Leaders who deliver, monitor and problem solve the implementation of multi agency projects for the Borderline and Peterborough system. The Peterborough Health and Wellbeing Board has designated the Transformation Board as a subgroup to deliver and monitor the implementation of the Better Care Fund implementation Plan.

BCF STEERING GROUP

DELIVERY TEAM

INTEGRATION AND TRANSFORMATION GROUP

JOINT PROJECT RESOURCES
(Flexible)

PROJECTS**

CARE BILL* CARERS* INFO SHARING* 7 DAY WORKING* [] []

OPAC CONTRACT/RISK AND FINANCIAL OVERSIGHT MDT* INTERMEDIATE CARE – incl care beds and discharge to assess

POTENTIAL JOINT PROJECTS

PROJECTS

[] [] [] []

[] [] [] []

HOMES
LIFESTYLE
ISOLATION

* existing projects (projects that are shaded are Care Bill or National Conditions)

** BCF proposals have been mapped to the three change areas (A: Support for people at home, B: Support for people in need of help, C: Support for people to leave hospital) and these will be aligned with the existing projects, or new projects will be scoped and established and funding aligned by June 2014.

*** the Board will be primarily programme delivery focussed but if required, a separate strategy group will be established.