

A14 Cambridge to Huntingdon Improvement Scheme

**Legacy Fund Spend
February 2021**

much more than a road

Community Fund

The A14 project has funded a Community Fund where members of the community can apply for grants of up to £10,000, larger grants are considered on a case by case basis. The fund has a total budget of £450,000 and has really enabled us to connect with the communities to understand what their priorities are. The fund also supported a number of Local Highways Initiatives in partnership with Cambridgeshire County Council.

These proposals are considered by a panel made up of Highways England, Local Authorities, Natural England, residents and a local community foundation who manage the process.

A list of some of the projects can be found below.

Description	Recipient	Amount
To provide a convenience shop for the local community including volunteering and work experience opportunities	Great Paxton Community Village Shop Ltd	£ 9,965.00
An artist to work with the whole community to update 5 murals in the school hall	Alconbury C of E Primary School	£ 5,000.00
To improve confidence and employability of people furthest from employment by growing wildflower plugs for use on the borrow pit nature reserves created by the A14	Groundwork	£ 5,535.00
To complete and help maintain the orchard	Histon & Impington Community Orchard Project	£ 1,751.50
To create a new cross-disciplinary workshop, that ties in the environmental theme of the current exhibition using the A14 as a case study	Cambridge Science Centre	£ 9,780.00
To support water voles in the area of the A14 improvements by trapping and controlling non-native mink populations	Countryside Restoration Trust	£ 9,005.00
To conduct a feasibility study into options to provide a safe alternative to the hazardous B1043 for cyclists	Great Paxton Parish Council	£ 3,000.00
To provide a secure bicycle parking facility for hall users	The Offords Recreation Hut	£ 2,160.00
To set up additional local running groups aimed at complete beginners	Fen Edge Runners	£ 650.00
To provide support towards the purchase of a community speed watch equipment	Madingley Parish Council	£ 1,389.00
To hire an A14 Writer in Residence who will encourage road users to engage with their surroundings	University of Cambridge Continuing Education	£ 8,970.00
To run a programme which engages the local community in the Offords through creative exploration of A14 surveying discoveries and local spaces	Cambs Curiosity & Imagination wildlife workshops	£ 9,744.00
To provide a play area including a soft tread surface, climbing wall and fitness equipment for use by pupils and the wider community	Bar Hill Community Primary School	£ 10,000.00
To inform students about apprenticeships through staff training and site visits	Neale-Wade Academy	£ 4,300.00
To enable 68 student artists who have learning disabilities to examine the connections between communities along the section of the development of the A14 through visual art	Rowan	£ 10,000.00
To enable young people to express themselves through music and film about how the A14	Romsey Mill Trust	£ 9,926.00

development reflects their own life situations and aspirations		
To encourage greater use of Buckden's footpaths by establishing and advertising a circular route	Buckden Parish Council	£ 5,510.00
To provide intensive support for 40 homeless people to help them access employment, education and training	Cambridge Cyrenians	£ 10,000.00
To design a logo, set-up a professional looking website and pay solicitor's fees for transference of land and planning application fees	Fenstanton Village Hall Trust	£ 1,500.00
To provide outdoor activity equipment for older children in the local community	Fen Drayton Parish Council	£ 10,000.00
Re-surfacing Church Lane for recreational purposes and reduce the hazard for those in wheelchairs and mobility scooters	Lolworth Parish Council	£ 10,000.00
To contribute towards the creation of a community Pub in Grafham village	The Pub at Grafham Ltd	£ 10,000.00
To install a new welcome barn in Brampton Wood nature reserve which will contain information for visitors	The Wildlife Trust	£ 10,000.00
To provide training and resources for schools in Huntingdonshire to enable them to incorporate sustainable themes in lessons	Peterborough Environment City Trust	£ 9,927.00
Morelock Signs speed camera and tripod	Communal Speed watch equipment	£ 5,830.80
To provide training and resources for schools in Huntingdonshire to enable them to incorporate sustainable themes in lessons	Peterborough Environment City Trust	£ 9,927.00
To run a festival promoting the history of Huntingdon through interactive displays, talks and competitions	Huntingdon History Festival	£ 9,107.00
To connect the village to the guided bus way and wider public transport options by constructing bus stops on the A1123	Houghton & Wyton Parish Council	£ 10,000.00
To help villages in rural locations to set up their own walking, running or cycling programmes involving local volunteers	Living Sport	£ 10,000.00
Magpas Air Ambulance towards CPR skills training courses for communities residing along the A14	Magpas Air Ambulance	£ 10,000.00
To provide free information on leisure and social activities to residents and visitors within two redundant iconic BT Kiosks	Swavesey Parish Council	£ 2,000.00
Providing a defibrillator	Easton Parish Council	£ 2,491.00
To run a number of art workshops and community events enabling local people to engage with protecting wildlife along the A14	Cambs Curiosity & Imagination wildlife workshops	£ 9,928.00
Farmer environmental projects	FWAG East Ltd	£ 10,350.00
To carry out a feasibility study to establish Non-Motorised User route from Hilton to St Ives	Hilton Parish Council	£ 9,500.00
Buckden Parish Council to undertake a feasibility study for a cycle route between Buckden and Grafham	Buckden Parish Council	£ 9,000.00
To fund a second enlarged History Festival, building in learnings from last year and with increased A14 focus	Huntingdonshire History Festival	£ 10,000.00

To reconfigure and resurface pedestrian and vehicle access routes in the central visitor area	RSPB	£	9,680.00
To provide free training, workshops and guided walks to the local community with the aim to inspire people to volunteer in habitat creation for species along the A14 Corridor.	The Butterfly Conservation	£	9,142.00
Local Highways Initiatives	Buckden Parish Council	£	9,104.00
Local Highways Initiatives	Histon & Impington Parish Council	£	9,984.00
Local Highways Initiatives	Graveley Parish Council	£	5,274.00
Local Highways Initiatives	Swavesey Parish Council	£	8,941.00
Local Highways Initiatives	Milton Parish Council	£	7,374.00



Mill Steps

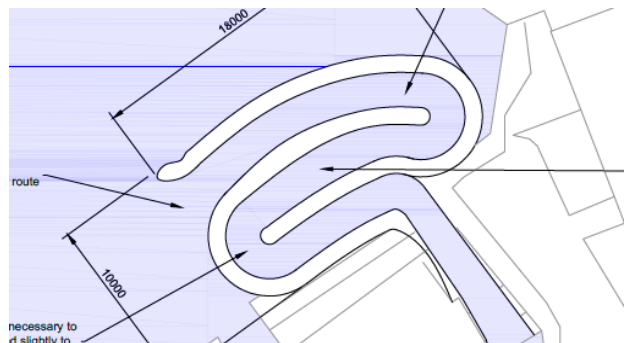
This is a partnership project with the Huntingdon District Council, Environment Agency, Godmanchester Town Council and Godmanchester in Bloom. The project was originally proposed as a repair project that would deliver some aesthetic improvements to Mill Steps.

However, further work with the Environment Agency and Godmanchester Town Council has culminated in a project that will be creating a community amenity that also incorporates a fish pass into the structure.

This will deliver significant biodiversity enhancements and links into the wider strategy for the Great Ouse with the Godmanchester Sluices identified as a pinch point for fish migration. The local school have already expressed some interest in using the structure as a teaching resource, something we are keen to progress.

By combining efforts and funding, a project budget of £450,000 has been confirmed.

Below are some images of the sluice and surrounding environment in its current state, and an example of what the fish pass and community space could look like.



Ouse Valley Way Enhancements

Engagement with Cambridgeshire County Council's Public Rights of Way Officers resulted in proposal being developed for the scheme to support in partnership with CCC that would enhance the route and deliver maintenance repairs to several bridges in the scheme's corridor.

The Ouse Valley Way is a 150-mile route that follows the Great Ouse from its source to the Wash near Kings Lynn. There are 7 elements to the enhancement works, each element will enhance the Great Ouse Valley for the enjoyment of the wider communities and long-distance visitors to this important natural environment.

The seven elements are broken down below.

Element	Description
Tree works	There are many fallen and dying trees along the route. Proposal will cut back, coppice and improve the maintenance of overhanging trees along the OVW.
Erosion diversion	Erosion damage requires the urgent diversion of the Public Right of Way. Potential to divert to other side of hedge row.
Gates	Currently four gates require replacing as they have either failed, or are in immediate danger of failure. Replace four gates with kissing gates to improve accessibility at entrance to Port Holme Common and Godmanchester Eastside Common.
Signage	To replace all (approximately 30) green fingerpost signs with dedicated Ouse Valley Way sign with destinations and distances to improve accessibility and user knowledge. These finger signs will include the unique OSW symbol deployed across the wider OVW.
Waymarking	A programme to improve the waymarking along the OVW. To include the purchase of 100 high visibility yellow topped waymark posts and the appropriate OVW waymark discs.
Interpretation boards	Design and installation of a number of boards along the OVW that will aid the interpretation of the landscape. This will be done with the input from a number of historical experts both internal and external to CCC.

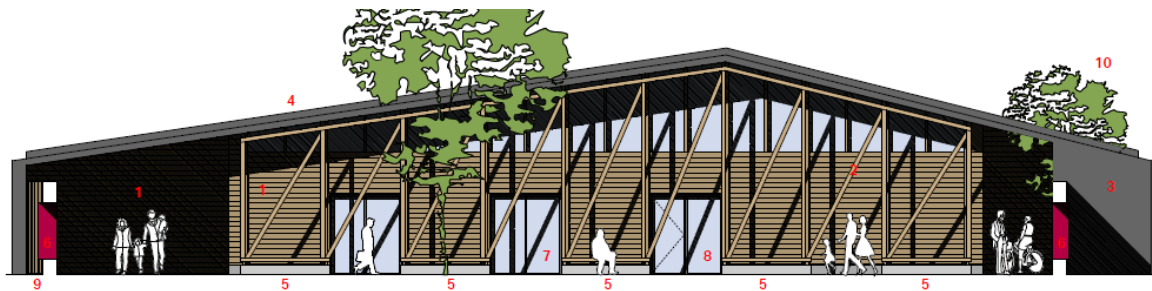
Northstowe Heritage Centre

Highways England is providing over £550,000 to support the construction of a heritage facility in the new development of Northstowe, in partnership with Cambridgeshire County Council and Homes England. This funding has been secured from the central designated funds programme.

A further £110,250 is being provided from the A14 Legacy Fund to allow Cambridgeshire County Council to have a rolling refresh programme on the displays to encourage repeat visits and a wider angle of learning.

It is envisaged that when the site is complete there will be displays that not only showcase the archaeological discoveries from the A14, but also from the Northstowe development and many other sources.

Below are the concept designs that were initially created for the facility.



Pigeon Proofing

Rectory farm bridge in Godmanchester is located at the entrance to Godmanchester when approaching from Cambridge using the existing A14. The structure carries the A14 over Cambridge Rd.

The town council has been liaising with Highways England Area Team to find a solution for the significant fouling of the footway and roadway at this location due to pigeons nesting in the bridge.

The identified solution was not a viable as an option due to financial constraints, however through wider engagement the project has been able to contribute £30,000 to the proposal.

Employment and skills

The project has gone above and beyond to work with schools alongside other employment and skills programmes in the scheme's corridor. The A14 Legacy fund has contributed £180,000 to these extra over events and programmes. There has been 15 specific initiatives supported by the fund, they are detailed below.

Programmes	Description
Edge Careers Event	Edge careers fair brings together local businesses and secondary school pupils together to showcase companies, products and services, talk more about individual sectors and find out more detail about different types of industry. This programme has been supported twice.
Pre-apprenticeship Training Course	Two-week training course for local unemployed people. The course is a pilot initiative designed in collaboration between Legacy team, IDT HR team and earthworks contractors. This course provided a set of core skills required on a roads infrastructure project (including CSCS card) and some specific skills required for earthworks.
Green Team Training Programme	Groups of participants, aged 16 to 65, that are not in employment, education or training, work on a full programme of work (typically undertaking one significant, practical landscape improvement project) over the course of 14 weeks, learning skills and gaining qualifications that will help them to get a job, particularly within the landscaping and construction sectors. Teams are supervised by two qualified Groundwork staff. This programme has been run 7 times due to it's continued success.
Form the Future	The funding has supported an additional 50 enterprise and transition skills events and additional intensive support with work experience in both mainstream schools and special schools. The aim is to improve young people's ability to make career decisions and their optimism about the future.
Young Driver Event	The event is designed to engage with young people of school age to make them understand the dangers of driving and to better appreciate safety. The team provided a series of activities. These include: <ul style="list-style-type: none">- Volvo simulator- Highway Traffic Vehicle- Mobile Visitor Centre- STEM ambassadors and BRAKE ambassador
Form the Future	Launchpad is an employer-led programme in Cambridgeshire supporting STEM activities, Launchpad supported the Employment and Skills coordinator in delivering workshops in a local school.
West Anglia Training Association	WATA delivered a series of pre-employment programmes to give local unemployed people the opportunity to access skills which will enable them to work on site.

World of Work initiative	Initiative to create an understanding amongst school children of future job opportunities once they have finished in education. The pilot covers three Local Enterprise Partnership areas in England, with one focussed on Cambridgeshire. The project is a 30 minute 'livestream' programme targeting young people in their language. It cuts across a number of sectors (NHS, Stansted airport, etc) including the Road Transport Sector. As part of the programme the 5 sectors will be showcased through a 120 second video.
West Anglia Training Association	An Archaeology training programme for 12 unemployed people to test a non-graduate access route to employment as an archaeologist on a construction site. The training programme has been jointly developed by MOLA Headland and West Anglia Training Association to combine an understanding of practical archaeology and construction skills



Ecology

The project's internal Environment Team have shown a real passion for going above and beyond in their duties. The project has provided a unique opportunity for research to be carried out.

Using the A14 Legacy Fund on site there has been research into how enhancements can be made that will deliver benefits to bees and water voles (a protected species).

Water voles – To determine whether water voles will utilise a long-length culvert in excess of 30m and whether the bespoke design of the mammal ledge will encourage the movement of water voles through the culvert. This could help to encourage their spread and eventually help increase their population.

Bees – Additional short-term habitats were created in addition to the long-term habitats that are being created as part of the planned A14 development. These short-term habitats were specifically aimed at delivering benefits to species of ecological importance, such as bees. To contribute towards a national pollinator strategy.

Building on the work by the onsite ecology team the project is also supporting a PhD student from the University of East Anglia who is considering ways that pollinators can be supported by innovative landscaping techniques on Highways. This project also received a contribution of funding from the Bumblebee Conservation Trust.

NMU Programme 1

Working with Cambridgeshire County Council's Major Infrastructure Team a programme of cycle and shared use paths have been developed that help meet the ambitions for the corridor and to tie in the infrastructure provided by the main scheme.

This programme consists of 5 schemes that have a combined value of c£3m, and Highways England's designated funds programme is contributing £2m towards the costs. All are supported by the objectives contained in CCC's formally adopted Rights of Way Improvement Plan (ROWIP) and the Cambridgeshire Health and Wellbeing Strategy (HWS).

Parish Council Plans

The A14 Legacy Fund has reached out to a number of parishes throughout the scheme's corridor who have seen significant adverse impacts because of the scheme. The communities were asked to present 3 ideas that would support their wider village plans. From this the A14 would look to support at least one of them.

The current list of proposals has been developed (see below), and are currently in delivery.

Parish	Proposal	Who delivering
Bar Hill	200m path to connect Spinney and Appletrees suitable for all users – route revised due to ownership issued. Site visit needed prior to confirming can still be delivered.	A14
Bluntisham	Carpark improvements	A14
Connington	Road safety improvements by modifying the chicane south of the village	CCC
Dry Drayton	Refresh of bollards and reflectors on pedestrian crossing on Park St	A14
Ellington	A new section of footpath, c32m – across conservation land, so yet to be confirmed is possible	A14 TBC
Elsworth	2 vehicle activated speed signs	A14
Fen Drayton	Creation of 2 build-outs either side of the school on Cootes Lane	CCC
Fenstanton	An all-weather games area	A14 – sub-contractor (work to begin April)
Girton	Installation of lighting to a section of Oakington to Girton cycleway	CCC - TBC
Grafham	Road safety improvements by implementing a 40mph buffer, dragon's teeth, roundals and MVAS.	CCC
Hilton	Possible installation of path around larger pond in the village – engineering survey visit to be undertaken to confirm is possible.	A14 - TBC
Lolworth	Double glazing for village hall	A14 – sub contract (install March)
Longstanton	A variety of small proposals: speed signs / noticeboards / electronic screen /benches / bus shelter	A14
Madingley	Road safety improvements – chicane to be installed at close to the A14 end of The Avenue + 4 “Unsuitable for HGVs” signs	CCC
Milton	Road safety improvements - Improve crossing point at High Street & Fen Road	CCC
Oakington & Westwick	Road safety improvements by installing 9 speed cushions	CCC

Offords	Potential footpath improvement, yet to be agreed as suggestions have changed	TBC
Over	Road safety improvements – provision of speed activated cameras and white line improvements	A14
Swavesey	Provision of equipment to allow on-going self-delivery of byway maintenance	A14
Willingham	Footpath to Orchard, white line works, kerbs,	CCC