

Directorate: Adults, Health and Commissioning
 Subject: Finance Monitoring Report – January 2026

Contents

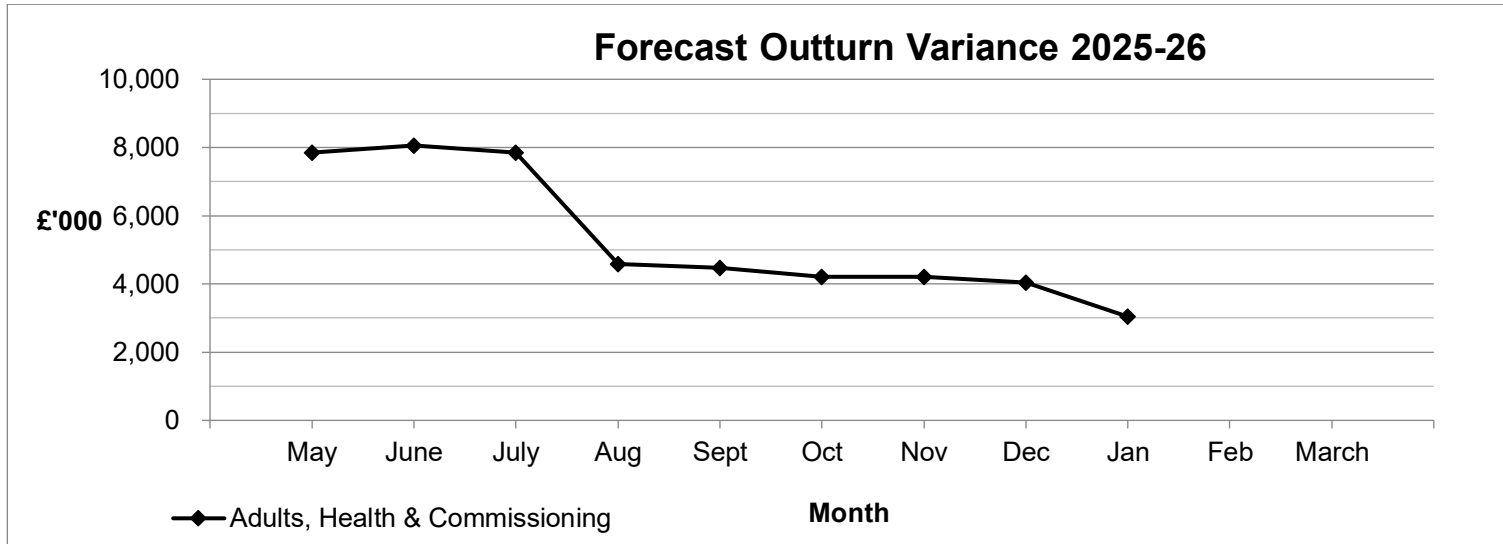
Section	Item	Description
1	Revenue Executive Summary	High level summary of information and narrative on key issues in revenue financial position
2	Capital Executive Summary	Summary of the position of the Capital programme within Adults, Health and Commissioning
3	Savings Tracker Summary	Summary of the latest position on delivery of savings
4	Technical Note	Explanation of technical items that are included in some reports
5	Key Activity Data	Performance information linking to financial position of main demand-led services
Appx 1	Service Level Financial Information	Detailed financial tables for Adults, Health and Commissioning main budget headings
Appx 2	Service Commentaries	Detailed notes on revenue financial position of services that have a significant variance against budget
Appx 3	Capital Appendix	This contains more detailed information about the capital programme, including funding sources and variances from planned spend.
Appx 4	Savings Tracker	Each quarter, the Council's savings tracker is produced to give an update of the position of savings agreed in the Business Plan.
Appx 5	Technical Appendix	Each quarter, this will contain technical financial information showing: Grant income received Budget virements Earmarked & Capital reserves

1. Revenue Executive Summary

1.1 Overall Position

At the end of the January 2026, Adults, Health and Commissioning is forecasting an overspend of £3,041k.

1.2 Summary of Revenue position by Directorate



1.2.1 Adults, Health and Commissioning

Forecast Outturn Variance (Previous) £000	Service Area	Gross Budget £000	Income Budget £000	Net Budget £000	Actual £000	Forecast Outturn Variance £000	Forecast Outturn Variance %
-1,894	Executive Director	21,539	-57,495	-35,956	-44,155	-2,113	5.9%
6,735	Learning Disability and Prevention	132,216	-6,867	125,350	111,452	6,649	5.3%
1,094	Care and Assessment	147,598	-46,915	100,683	89,415	1,062	1.1%
-1,600	Commissioning (incl Mental Health)	57,876	-7,569	50,307	38,183	-2,424	-4.8%
-151	Public Health	36,407	-34,935	1,472	-7,207	-215	-0.6%
4,183	Total Expenditure	395,636	-153,780	241,856	187,688	2,959	1.2%
-138	(Drawdown from) / Contribution to reserves	-1,472	0	-1,472	-1,262	82	-5.6%
4,045	Total	394,164	-153,780	240,384	186,426	3,041	1.3%

1.3 Significant Issues

The overall forecast position for Adults, Health and Commissioning budgets for 2025-26 at the end of January 2026 is an overspend of £3,041k (equivalent to 1.3% of the annual budget). The forecast overspend includes an underspend for Public Health of £215k (equivalent to 0.6% of the annual budget).

The main reason for the cost pressure is the implications of the ending of the pooled budget with the ICB and associated costs of services for people with Learning Disabilities following the de-coupling at the end of March 2025. The ending of the pooled budget arrangements was expected to reduce costs for the Council and savings were built into previous Business Plans to reflect this; but the actual impact is not achieving those savings in full. Work on a number of joint funded packages is ongoing with proactive actions, focusing on the costs in providing care and support for those people with a learning disability, to help mitigate these cost pressures underway. The remaining pressure is being built into the 2026-27 Business Plan.

In addition to the pressures on services for people with Learning Disabilities, there remain a number of challenging savings targets from 2024-25 and 2025-26 which are unlikely to deliver in full in 2025/26. Progress against these targets is reported quarterly but expected shortfalls or forecast over delivery against target are also built into monthly forecasts.

Significant work has been undertaken to seek to reduce the forecast pressure on the Adults, Health and Commissioning budget, and mitigations have been reflected in the forecast. These include work on packages of care emerging from the Learning Disabilities pooled budget, review of the usage of grants to support social care pressures, and proposals for the use of Adult Social Care reserves.

The key factors that are likely to impact the forecast through the remainder of 2025-26 include:

- demand remains difficult to predict and can vary significantly from month to month. This can be reflected both in numbers accessing services, and higher acuity of need of those accessing services;
- the Directorate has a challenging set of savings targets to deliver against. Whilst many are expected to deliver in full, in other areas the work to finalise delivery plans was delayed resulting in forecast under delivery against some of the savings targets in the current financial year;
- vacant posts lead to underspends against staffing budgets and staffing risks were particularly pertinent for the Public Health team through the year whilst a new permanent structure for the Council was implemented;
- pressures with the provider market continued to be felt, particularly related to increasing fee rates, and changes in employers National Insurance commitments. The impacts of inflationary pressures are seen both in the uplifts required for existing care packages, and the price at which new packages are sourced; and
- the position of the care market, particularly around specific types of provision and location, continues to make some placements more difficult to source, particularly at the more complex end of provision.

Adults, Health and Commissioning overdue debt (excluding debt with Health partners) stood at £25.0m at the end of January, up from £24.1m at the end of December. Debt over 1 year old was £12.6m at the end of January, up from £12.0m at the end of December. This compares to a balance of £9.3m at the end of March 2024.

Overdue debt with Health partners stood at £4.1m at the end of January, up from £2.5m at the end of December. This increase is driven by the Late payment of invoices related to the Integrated Community Equipment services (ICES). These invoices were cleared in early February. Work continues with Health partners to address the remaining Health debt outstanding.

2. Capital Executive Summary

The council's capital programme has undergone review for 2026-27 business planning. As part of this review, the Independent Living Service schemes and Specialist Accommodation Service scheme have been removed in their present form. Work is ongoing in the current year to identify future options to meet specialist accommodation needs and these will be brought forward once opportunities have been fully scoped. Abortive costs of £458k from the Independent Living Service: East Cambridgeshire will be written back to revenue following closure of the scheme.

Additional Disabled Facilities Grant (DFG) was announced in January 2026 and has increased the budgeted spend and related funding for DFG in 2025-26 by £442k. This money is received into the County Council but made up of individual allocations for each of the District Councils in Cambridgeshire, and the funding will therefore be passed on to them.

Further details of the capital position can be found in Appendix 3.

3. Savings Tracker Summary

The Savings Tracker is a reporting tool for summarising delivery of planned revenue savings. Within the Tracker, the delivery of savings is shown against the original saving approved in the 2025-30 Business Plan. The Tracker is completed at the end of each quarter and reported in the next FMR going to committee. It is important to note the relationship between the reported savings projections and the overall revenue financial position reported in this report. As pressures arise in-year, further mitigation and/or additional savings are required to deliver a balanced position. The summary savings position as at the end of December is reported below:

RAG Status	Original Saving £000	Forecast Saving £000	Variance £000
Blue	-3,673	-7,077	-3,404
Green	-14,139	-14,139	0
Amber	-1,173	-620	553
Red	-6,731	-1,847	4,884
Black	-2,596	0	2,596
Total	-28,312	-23,683	4,629

4. Technical note

On a quarterly basis, a technical financial appendix is included as Appendix 5. This appendix covers:

- Grants that have been received by the service.
- Budget movements (virements) into or out of the directorate from other directorates, to show why the budget might be different from that agreed by Full Council.
- Service earmarked reserves – funds held for specific purposes that may be drawn down in-year or carried-forward – including use of funds and draw-down.

The third quarterly appendix is included as Appendix 5 to this FMR report.

5. Key Activity Data

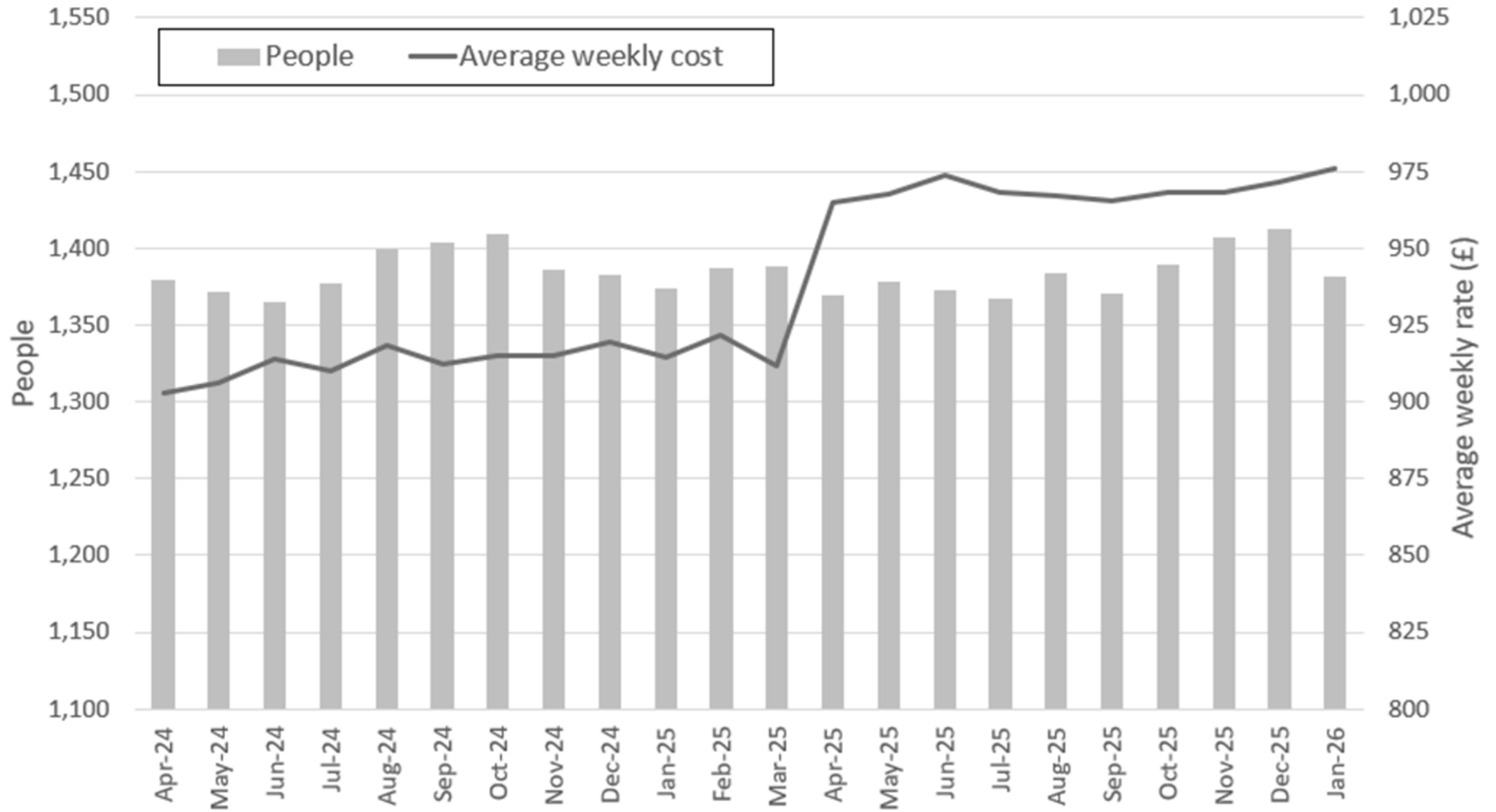
5.1 Key activity data for January 2026 for Learning Disability Partnership is shown below:

Learning Disability Partnership	BUDGET			ACTUAL (January 2026)				Forecast Outturn		
Service Type	Expected No. of Care Packages 2025-26	Budgeted Average Unit Cost (per week)	Annual Budget	Current Care Packages	DoT	Current Average Unit Cost (per week)	DoT	Total spend/income	DoT	Variance
Accommodation based										
~Residential	222	£2,681	£28,234k	214 ↓		£2,485 ↓		£28,733k ↓		£499k
~Nursing	9	£3,187	£1,250k	6 ↔		£2,502 ↑		£1,215k ↑		-£34k
~Respite			£408k		↔		↔	£471k ↓		£63k
Accommodation based subtotal	231	£2,700	£29,892k	220		£2,485		£30,420k ↓		£528k
Community based										
~Supported Living	573	£1,884	£51,235k	561 ↔		£1,845 ↑		£54,453k ↑		£3,218k
~Homecare	337	£475	£8,167k	316 ↓		£404 ↓		£6,466k		-£1,701k
~Direct payments	397	£622	£10,724k	363 ↓		£542 ↑		£10,371k ↑		-£353k
~Live In Care	7	£1,118	£341k	8 ↔		£1,330 ↔		£488k ↑		£148k
~Day Care	637	£228	£5,939k	620 ↓		£212 ↓		£5,042k ↓		-£896k
~Other Care	296	£134	£2,788k	280 ↓		£133 ↑		£2,334k ↓		-£453k
Community based subtotal	2,247	£747	£79,193k	2,148		£716		£79,154k		-£39k
Total for expenditure	2,478	£929	£109,085k	2,368		£881		£109,574k ↓		£489k
Care Contributions			-£6,143k					-£6,547k ↑		-£404k

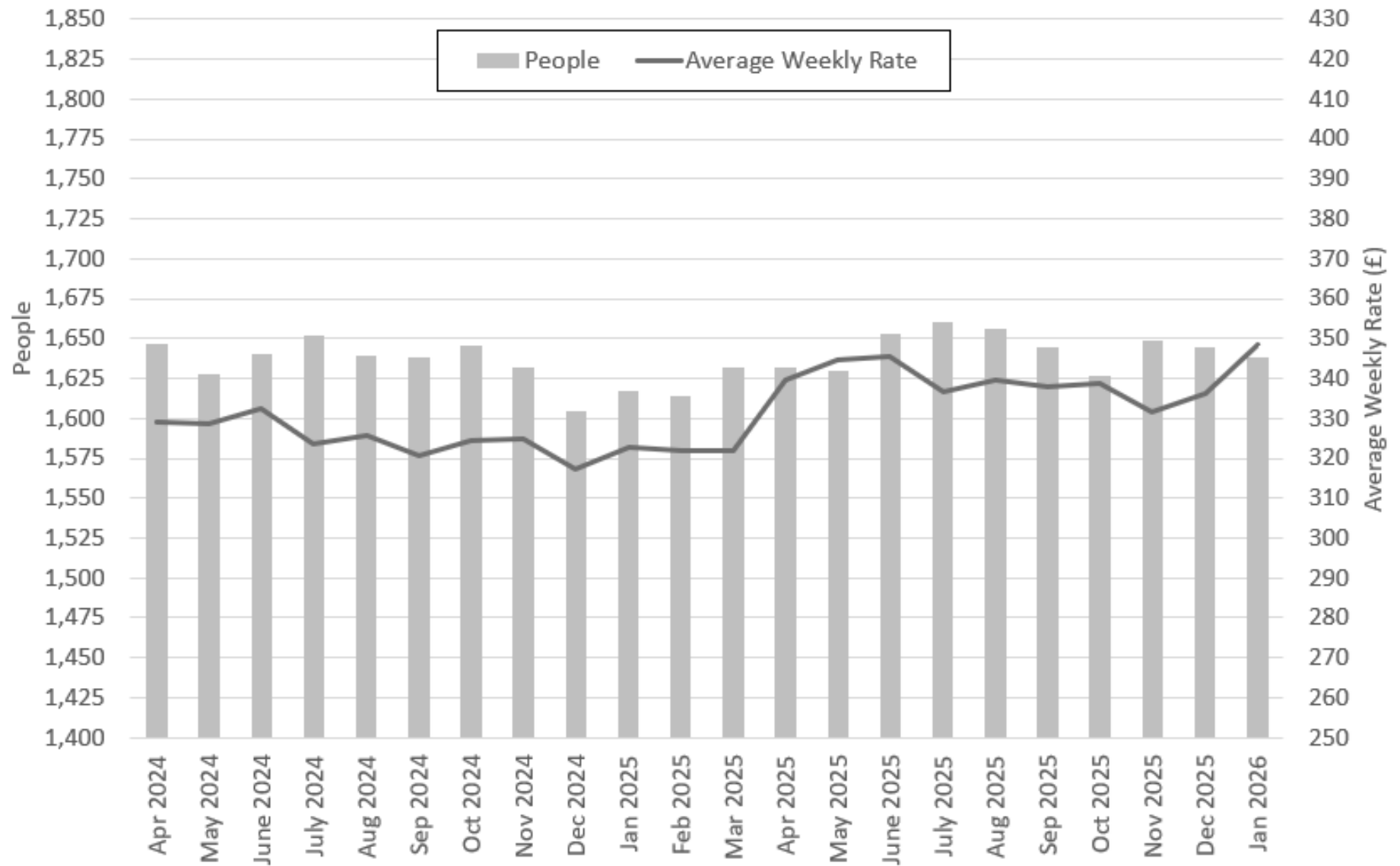
5.2 Key activity data for January 2026 for Older People's service is shown below:

Older People's Service	BUDGET			ACTUAL (January 2026)				Forecast Outturn		
Service Type	Expected No. of Care Packages 2025-26	Budgeted Average Unit Cost (per week)	Annual Budget	Current Care Packages	DoT	Current Average Unit Cost (per week)	DoT	Total spend/income	DoT	Variance
Accommodation based										
~Residential	407	£927	£20,827k	391 ↓		£935 ↓		£19,894k ↓		£-934k
~Residential Dementia	548	£934	£28,173k	566 ↓		£925 ↑		£28,487k ↓		£314k
~Nursing	260	£1,048	£15,477k	229 ↓		£1,037 ↔		£14,358k ↓		£-1,119k
~Nursing Dementia	211	£1,150	£14,216k	196 ↓		£1,132 ↔		£13,414k ↓		£-802k
~Respite			£734k	83 ↑		£202 ↑		£895k ↓		£161k
Accommodation based subtotal	1,426	£985	£79,428k	1,465		£976		£77,048k		£-2,380k
Community based										
~Supported Living	383	£121	£6,289k	474 ↓		£107 ↓		£6,583k ↓		£294k
~Homecare	1,713	£337	£29,020k	1,638 ↓		£348 ↓		£28,907k ↓		£-112k
~Direct payments	182	£449	£3,899k	183 ↓		£478 ↓		£4,181k ↑		£282k
~Live In Care	30	£1,055	£1,597k	28 ↔		£1,068 ↔		£1,659k ↓		£62k
~Day Care	57	£76	£129k	45 ↓		£85 ↓		£110k ↑		£-19k
~Other Care			£206k	11 ↓		£45 ↑		£137k ↑		£-69k
Community based subtotal	2,365	£314	£41,140k	2,379		£312		£41,578k		£438k
Total for expenditure	3,791	£566	£120,568k	3,844		£565		£118,626k ↓		£-1,942k
Care Contributions			£-43,761k					£-41,979k		£1,781k

OP Activity & Average Weekly Cost for Care Homes (Apr 24 - Jan 26)



OP Activity & Average Weekly Cost for Home Care (Apr 24 - Jan 26)



5.3 Key activity data for January 2026 for Physical Disabilities Services is shown below:

Physical Disabilities	BUDGET			ACTUAL (January 2026)				Forecast Outturn		
Service Type	Expected No. of Care Packages 2025-26	Budgeted Average Unit Cost (per week)	Annual Budget	Current Care Packages	DOT	Current Average Unit Cost (per week)	DOT	Total spend/income	DOT	Variance
Accommodation based										
~Residential	32	£1,362	£2,028k	30 ↔		£1,523 ↑		£2,282k ↑		£254k
~Residential Dementia	10	£1,020	£503k	9 ↓		£1,042 ↑		£468k ↓		-£34k
~Nursing	25	£1,393	£1,819k	24 ↑		£1,344 ↓		£1,556k ↑		-£264k
~Nursing Dementia	2	£1,295	£85k	4 ↔		£1,379 ↔		£266k ↑		£181k
~Respite			£74k	14 ↑		£456 ↑		£226k ↑		£152k
Accommodation based subtotal	69	£1,322	£4,510k	81		£1,386		£4,798k		£289k
Community based										
~Supported Living	36	£532	£650k	38 ↑		£529 ↓		£669k ↓		£19k
~Homecare	382	£320	£6,084k	352 ↓		£350 ↑		£6,095k ↑		£11k
~Direct payments	165	£462	£3,764k	176 ↓		£480 ↓		£3,869k ↑		£105k
~Live In Care	20	£1,129	£1,164k	16 ↓		£1,120 ↓		£1,077k ↓		-£87k
~Day Care	23	£156	£183k	26 ↑		£147 ↓		£181k ↑		-£2k
~Other Care			£1k	2 ↔		£132 ↔		£19k ↑		£19k
Community based subtotal	626	£390	£11,845k	610		£410		£11,910k		£65k
Total for expenditure	695	£482	£16,354k	691		£524		£16,708k	↑	£354k
Care Contributions			-£2,490k					-£2,066k		£424k

5.4 Key activity data for January 2026 for Older People Mental Health (OPMH) is shown below:

Older People Mental Health	BUDGET			ACTUAL (January 2026)				Outturn		
Service Type	Expected No. of Care Packages 2025-26	Budgeted Average Unit Cost (per week)	Annual Budget	Current Care Packages	DOT	Current Average Unit Cost (per week)	DOT	Total spend/income	DOT	Variance
Accommodation based										
~Residential	44	£658	£1,637k	42	↓	£895	↓	£1,774k	↓	£137k
~Residential Dementia	42	£715	£1,558k	46	↑	£923	↓	£2,005k	↑	£447k
~Nursing	39	£723	£1,116k	32	↔	£1,061	↑	£1,652k	↑	£537k
~Nursing Dementia	78	£895	£5,187k	69	↔	£1,192	↓	£4,005k	↓	£-1,182k
~Respite	9	£104	£32k	1	↓	£437	↑	£44k	↑	£13k
Accommodation based subtotal	212	£773	£9,529k	190		£4,509		£9,481k		£-48k
Community based										
~Supported Living	12	£481	£359k	10	↔	£759	↔	£331k	↔	£-28k
~Homecare	78	£206	£955k	70	↔	£338	↓	£1,210k	↓	£255k
~Direct payments	7	£999	£469k	7	↔	£480	↔	£219k	↓	£-251k
~Live In Care	9	£793	£507k	9	↔	£1,088	↔	£474k	↑	£-33k
~Day Care	7	£58	£8k	10	↔	£104	↑	£28k	↑	£21k
~Other Care	5	£9	£3k	6	↑	£43	↑	£1k	↔	£-2k
Community based subtotal	118	£309	£2,301k	112		£408		£2,263k		£-37k
Total for expenditure	330	£607	£11,830k	302		£2,988		£11,744k	↓	£-86k
Care Contributions			£-1,712k					£-1,967k	↓	£-254k

5.5 Key activity data for January 2026 for Adult Mental Health (AMH) is shown below:

Adult Mental Health	BUDGET			ACTUAL (January 2026)				Outturn		
Service Type	Expected No. of Care Packages 2025-26	Budgeted Average Unit Cost (per week)	Annual Budget	Current Care Packages	DOT	Current Average Unit Cost (per week)	DOT	Total spend/income	DOT	Variance
Accommodation based										
~Residential	53	£720	£2,818k	58 ↔		£1,028 ↓		£3,100k ↓		£282k
~Residential Dementia	0	£0	£k		↔		↔	£k ↔		£k
~Nursing	11	£814	£611k	13 ↓		£1,126 ↓		£727k ↓		£116k
~Nursing Dementia	0	£0	£k		↔		↔	£k ↔		£k
~Respite	1	£7	£8k	1 ↔		£10 ↔		£k ↔		-£8k
Accommodation based subtotal	65	£725	£3,437k	72		£1,046		£3,828k		£390k
Community based										
~Supported Living	166	£644	£8,170k	145 ↓		£928 ↓		£7,724k ↓		-£446k
~Homecare	239	£118	£2,967k	225 ↑		£130 ↓		£2,548k ↓		-£420k
~Direct payments	22	£202	£294k	19 ↓		£283 ↓		£264k ↓		-£30k
~Live In Care	3	£1,201	£256k	3 ↔		£1,173 ↔		£207k ↔		-£49k
~Day Care	5	£75	£27k	6 ↔		£116 ↔		£37k ↑		£9k
~Other Care	6	£35	£22k	7 ↑		£56 ↑		£32k ↑		£10k
Community based subtotal	441	£326	£11,738k	405		£429		£10,811k		-£927k
Total for expenditure	506	£377	£15,175k	477		£522		£14,639k ↓		-£536k
Care Contributions			-£479k					-£421k ↔		£57k

5.6 Key activity data at the January 2026 for Autism is shown below:

Autism	BUDGET			ACTUAL (January 26)				Outturn		
Service Type	Expected No. of Care Packages 2025-26	Budgeted Average Unit Cost (per week)	Annual Budget	Current Care Packages	DoT	Current Average Unit Cost (per week)	DoT	Total spend/income	DoT	Variance
Accommodation based										
~Residential	4	£1,824	£380k	4	↑	£2094	↔	£399k	↑	£19k
~Respite		£882	£2k	2	↔	£28	↔	6k	↓	£5k
Accommodation based subtotal	4	£1,824	£382k	6		£1,405		£406k	↑	£24k
Community based										
~Supported Living	26	£1,244	£1,687k	26	↓	£1183	↓	£1,785k	↓	£98k
~Homecare	55	£195	£559k	47	↓	£148	↓	£466k	↓	-£93k
~Direct payments	50	£239	£623k	46	↔	£223	↓	£550k	↓	-£73k
~Day Care	11	£111	£64k	11	↓	£138	↑	£72k	↓	£8k
~Other Care	12	£363	£227k	9	↓	£199	↓	£194k	↓	-£34k
Community based subtotal	154	£393	£3,160k	139		£369		£3066k		-£94k
Total for expenditure	158	£430	£3,542k	145		£412		£3472k		-£71k
Care Contributions			-£197k					-£205k		-£8k

Appendix 1 – Adults, Health and Commissioning Detailed Financial Information

Forecast Outturn Variance (Previous) £000	Committee	Note	Budget Line	Gross Budget £000	Income Budget £000	Net Budget £000	Actual £000	Forecast Outturn Variance £000	Forecast Outturn Variance %
Executive Director									
-1,964	A&H	1	Executive Director - Adults, Health & Commissioning	17,986	-57,460	-39,474	-47,057	-2,173	-6%
-294	A&H	2	Staffing Pay Inflation	294	0	294	0	-294	-100%
332	A&H	3	Performance & Strategic Development	2,462	-35	2,427	2,226	332	14%
32	A&H		Principal Social Worker	798	0	798	676	22	3%
Service Director – LDP and Prevention									
26	A&H		Service Director – LDP and Prevention	351	-22	329	-106	30	9%
26	A&H		Prevention & Early Intervention	14,176	-302	13,874	10,769	1	0%
-72	A&H		Autism and Adult Support	4,026	-229	3,797	2,901	-136	-4%
Learning Disabilities									
-4,460	A&H	4	LD Head of Service	3,290	0	3,290	-48	-4,428	-135%
3,635	A&H		LD - City, South and East Localities	48,291	-2,945	45,345	40,989	2,953	7%
4,949	A&H		LD - Hunts and Fenland Localities	44,157	-2,946	41,212	39,577	5,933	14%
2,632	A&H		LD - Young Adults Team	7,017	-252	6,766	7,658	2,120	31%
0	A&H		LD - In House Provider Services	10,908	-172	10,736	9,712	177	2%
6,755			Learning Disabilities Total	113,664	-6,315	107,349	97,888	6,755	6%
Service Director – Care & Assessment									
-60	A&H		Service Director - Care & Assessment	1,077	0	1,077	740	-81	-7%
4	A&H		Assessment & Care Management	5,355	-46	5,309	4,319	4	0%
0	A&H		Transfers of Care	2,941	0	2,941	2,272	0	0%
86	A&H		Safeguarding	1,599	0	1,599	1,313	99	6%
-20	A&H		Adults Finance Operations	1,994	0	1,994	1,028	-20	-1%

Forecast Outturn Variance (Previous) £000	Committee	Note	Budget Line	Gross Budget £000	Income Budget £000	Net Budget £000	Actual £000	Forecast Outturn Variance £000	Forecast Outturn Variance %
		5	Older People's and Physical Disabilities Services						
807	A&H		Older Peoples Services - North	55,547	-22,128	33,419	31,360	599	2%
-263	A&H		Older Peoples Services - South	62,495	-21,979	40,516	36,072	-195	-0%
23	A&H		Physical Disabilities - North	7,931	-1,160	6,771	5,761	142	2%
517	A&H		Physical Disabilities - South	8,658	-1,602	7,057	6,549	514	7%
1,084			Older People's and Physical Disabilities Services Total	134,631	-46,869	87,762	79,743	1,060	1%
			Service Director - Commissioning						
-754	A&H	6	Service Director - Commissioning	2,935	0	2,935	583	-920	-31%
-104	A&H	7	Adults Commissioning - Staffing	3,418	0	3,418	2,665	-124	-4%
55	CYP	7	Children's Commissioning - Staffing	1,504	0	1,504	1,435	59	4%
-235	A&H	8	Adults Commissioning - Contracts	5,979	-987	4,992	3,753	-427	-9%
-64	A&H		Housing Related Support	7,110	-639	6,471	5,505	-64	-1%
289	A&H	9	Integrated Community Equipment Service	5,317	-2,899	2,418	2,003	133	5%
		10	Mental Health						
-35	A&H		Mental Health - Staffing	4,117	-62	4,055	2,345	-35	-1%
-51	A&H		Mental Health Commissioning	3,223	-553	2,670	2,183	-59	-2%
-434	A&H		Adult Mental Health	12,631	-565	12,066	9,491	-640	-5%
-267	A&H		Older People Mental Health	11,642	-1,865	9,777	8,220	-348	-4%
-787			Mental Health Total	31,613	-3,045	28,567	22,239	-1,082	-4%

Forecast Outturn Variance (Previous) £000	Committee	Note	Budget Line	Gross Budget £000	Income Budget £000	Net Budget £000	Actual £000	Forecast Outturn Variance £000	Forecast Outturn Variance %
		11	Public Health						
236	A&H		Director of Public Health	2,598	-29,506	-26,908	-28,358	228	9%
-30	A&H		Healthy Place and Intelligence <i>Prevention and Inclusion</i>	289	0	289	152	-46	-16%
-123	A&H		Prevention and Inclusion services	1,588	-38	1,550	1,101	-110	-7%
0	A&H		Behaviour Change Services	3,799	-542	3,257	2,103	0	0%
-10	A&H		Drug and Alcohol Misuse	7,347	-2,064	5,282	3,890	-27	0%
1	A&H		Smoking Cessation <i>Children and Health Protection</i>	1,384	-816	569	-207	1	0%
-55	A&H		Children and Health Protection services	226	0	226	99	-57	-25%
-120	CYP		Children Health	11,641	-90	11,551	9,908	-141	-1%
-50	A&H		Sexual Health and Contraception	7,534	-1,879	5,655	4,104	-64	-1%
-151			Public Health Total	36,407	-34,935	1,472	-7,207	-215	-1%
4,183			Overall Adults, Health & Commissioning Total before Use of Reserves	395,636	-153,780	241,856	187,688	2,959	1%
-289			Drawdown from Adults reserves	0	0	0	0	-133	0%
151			Drawdown from Public Health reserves	-1,472	0	-1,472	-1,262	215	15%
4,045			Overall Adults, Health & Commissioning Total	394,164	-153,780	240,384	186,426	3,041	1%

Appendix 2 – Service Commentaries on Outturn Position

Narrative is given below where there is a variance greater than 2% of net budget or £100,000 whichever is greater for a service area, or where there is significant risk in delivery to budget for the year.

Note	Commentary vs previous month	Committee	Service Area / Budget Line	Net Budget £000	Forecast Outturn Variance £000	Forecast Outturn Variance %	Commentary
1	Updated	A&H	Executive Director - Adults, Health & Commissioning	-39,474	-2,173	-6%	<p>On the savings target for review of in house provision, review work has largely been completed but savings have not yet been delivered creating a pressure of up to £1m in year. Work is ongoing to understand savings opportunities and mitigations in year have been found. The pressure is more than offset by:</p> <ul style="list-style-type: none"> ➤ work to review priorities around the use of external grant funding which has released £2.2m of grant monies to contribute to care pressures; ➤ the release of unspent inflation contingency from 2024/25 of £364k; ➤ a forecast over delivery against the budget for in year savings from vacant posts of £675k; and ➤ Quality Assurance Forum work being undertaken without the need for using the £100k associated investment in year. <p>The forecast also includes allowance for the write back to revenue of costs previously charged to the Independent Living Scheme capital project in East Cambs which will not now proceed in its current form.</p>
2	Existing	A&H	Staffing Pay Inflation	294	-294	-100%	<p>The staff pay awards for 2025-26 have now been finalised releasing an underspend of £294k across Adults, Health and Commissioning.</p>
3	Existing	A&H	Performance & Strategic Development	2,427	332	14%	<p>Current progress on the digital innovation savings strategy suggests that the saving linked to this project will be delayed and will under-deliver in 25-26. Work is ongoing to understand the size of the savings opportunity and some mitigation in year may be possible. This will be reflected as it is identified.</p>

Note	Commentary vs previous month	Committee	Service Area / Budget Line	Net Budget £000	Forecast Outturn Variance £000	Forecast Outturn Variance %	Commentary
4	Updated	A&H	Learning Disabilities	107,349	6,755	6%	<p>As of 1 April 2025, the Learning Disability Partnership has formally dissolved its pooled budget arrangement with Health. The process of disaggregating the budget remains complex, with ongoing work to determine the appropriate health-related funding splits within the service. The original budget was built on an overestimation of health needs, and as joint funding agreements are now being made based on lower levels of health need, this has created significant financial pressure. The current forecast indicates a projected overspend of £6.755 million. This figure remains highly volatile and is subject to daily changes as various disaggregation workstreams are completed. Mitigation plans are in place, focusing on reviewing different areas of service spend. To date, these efforts have delivered £2.1 million in savings. However, new in-year demand is projected at £2.25 million. Following a period of lower demand last year, activity is now returning to previous levels, adding further strain to the budget. The savings achieved so far have started to reduce the overspend but £1.1m is continuing to offset some of the increased demand pressures. In addition, corporate funding of £2.9m has been allocated to support with offsetting the pressure, which has reduced the reported overspend to £6.75m</p>
5	Updated	A&H	Older People's and Physical Disabilities Services	87,762	1,060	1%	<p>Older People's and Physical Disabilities services are forecasting a £1.06m pressure, with no change from the previously reported period. This pressure is a result of two main factors. The first is that while net activity levels year-to-date remain lower than budgeted, we have seen a recent increase in demand for bed-based care. The second factor is an under-recovery against budgeted income from client contributions due to an adjustment (reduction) to the forecast for backdated charges. In combination, an increased demand and a reduced forecast of income, result in a forecast pressure of £1.06m.</p>

Note	Commentary vs previous month	Committee	Service Area / Budget Line	Net Budget £000	Forecast Outturn Variance £000	Forecast Outturn Variance %	Commentary
							With regards to savings as part of the forecast, the budget assumed in-year savings delivery of £3.35m. Current progress suggests an underachievement of £770k against this savings target. Additionally, there remain uncertainties around the potential impact of high levels of adult social care debt.
6	Updated	A&H	Service Director - Commissioning	2,935	-920	-31%	Negotiations with providers over 2025-26 inflationary uplifts are now coming to a conclusion allowing the partial release of the risk budget held back awaiting the outcome of inflation awards.
7	Existing	A&H	Commissioning – Staffing (Adults and Children's)	4,922	-64	-1%	Commissioning staffing budgets are being managed across the service with the pressure from the ending of an historic recharge of costs to the Learning Disability pooled budget offset in year by forecast underspends elsewhere.
8	Existing	A&H	Adults Commissioning contracts	4,992	-427	-9%	Adults Commissioning contracts is forecasting an underspend of £427k as a result of new contracts coming in at less than budget and additional Public Health funding into the Community Navigators and Unpaid Carers Support budgets.
9	Existing	A&H	Integrated Community Equipment Service	2,418	133	5%	The Integrated Community Equipment Service (ICES) provides equipment to people of all ages. The service is critical to helping people to remain as independent as possible in the community and in the home of their choice. Following notification that the provider of our community equipment service was in financial difficulties, we have worked with Peterborough City Council and Cambridgeshire and Peterborough Integrated Care Board to commission a new provider at pace to ensure this essential service can be maintained to the residents of Cambridgeshire and Peterborough. There was an anticipated increase in costs from this switch in providers of £625k but budget of £335k has been identified to contribute towards this pressure. Current forecasting based on actuals is indicating additional spend of £468k against the original expectation of £625k, resulting in a current forecast of £133k overspend. However,

Note	Commentary vs previous month	Committee	Service Area / Budget Line	Net Budget £000	Forecast Outturn Variance £000	Forecast Outturn Variance %	Commentary
							there is a risk that further investment will be required to support development of the warehouse, shifts in demand and the outcome of longer-term pricing negotiations with the new provider. Drawdown from Adults risk reserves is assumed for this pressure if it materialises.
10	Updated	A&H	Mental Health	28,567	-1,082	-4%	Mental Health services are forecasting an overall underspend of £1,082k, with an underspend on the cost of care of £988k in January. This is being driven by a reduction in spend for domiciliary care and supported living in Adult Mental Health services and nursing care within Older People Mental Health services. There remains a risk that more young people with complex needs transition into adult social care than expected and this is being monitored. In addition to this, a £35k underspend on staffing within the Mental Health Social Work Section 75 Agreement has been declared due to vacancies and staff turnover. The service is overachieving against the £1.1m savings target for Mental Health Services across 2024/25 and 2025/26 with £1.2m identified to date.
11	Updated	A&H	Public Health	1,472	-215	-1%	The Public Health policy lines now reflect the new structure in the Public Health service following the recent restructure. Staffing budgets have been split out across the 4 Public health teams within the Director of Public Health, Healthy Place and Intelligence, Prevention and Inclusion services and Children and Health Protection services policy lines. There are staffing underspends across these policy lines due to current vacancies as a number of posts within the new structure are recruited to. Additional Public Health funding is being transferred in year to the Strategy and Partnerships Directorate for anti-poverty work, and to the Adults, Health and Commissioning Directorate for the Community Navigators service and for support to Carers to offset these underspends and is reflected in the Director of Public Health position.

Note	Commentary vs previous month	Committee	Service Area / Budget Line	Net Budget £000	Forecast Outturn Variance £000	Forecast Outturn Variance %	Commentary
							In addition, there is a forecast in year underspend against the Healthy Child Programme based on staffing levels in place and inflationary uplifts in contracts.

Appendix 3 – Capital Position

3.1 Capital Expenditure

Original 2025-26 Budget as per Business Plan £000	Committee	Scheme Category	Total Scheme Revised Budget £000	Total Scheme Forecast Variance £000	Budget Carried-forward 2025-26 £000	Budget Re-phasing 2025-26 £000	Additional/Reduction in Funding 2025-26 £000	Revised Budget for 2025-26 £000	Actual Spend (Jan) £000	Forecast Outturn Variance (Jan) £000
-	A&H	Independent Living Service: East Cambridgeshire	21,727	-21,727	4	-4	-	-	4	-458
6,290	A&H	Disabled Facilities Grant	63,342	-	-	-	442	6,732	5,816	-
400	A&H	Integrated Community Equipment Service	4,000	-	-	-	-	400	-	-
64	A&H	Capitalisation of interest costs	1,570	-	-	-38	-	26	-	-39
-450	A&H	Capital variations	-8,289	-	-	375	-	-75	-	75
-	A&H	Independent Living Services	22,000	-22,000	-	-	-	-	-	-
3,000	A&H	Specialist Accommodation Services	12,000	-11,500	-	-2,500	-	500	-	-
9,304		TOTAL	116,350	-55,227	4	-2,167	442	7,583	5,819	-422

The council's capital programme has undergone review for 2026-27 business planning. As part of this review, the Independent Living Service schemes and Specialist Accommodation Service scheme are being removed in their present form. Work is ongoing in the current year to identify future options to meet specialist accommodation needs and these will be brought forward once opportunities have been fully scoped.

Additional Disabled Facilities Grant (DFG) was announced in January 2026 and has increased the budgeted spend for DFG in 2025-26 by £442k. This money is received into the County Council but made up of individual allocations for each of the District Councils in Cambridgeshire, and the funding will therefore be passed on to them.

The scheme(s) with significant variances (>£250k) either due to changes in phasing or changes in overall scheme costs can be found below:

Ref	Directorate / Committee	Commentary vs previous month	Scheme	Scheme Budget £m	Budget for 2025-26 £m	Forecast Outturn Variance £m	Cause	Commentary
1	Adults & Health	Existing	Independent Living Service: East Cambridgeshire	21,727	0	-458	Total scheme variance	Following 12 months of negotiation with the NHS, an agreement on the Heads of Terms was not achieved. No viable alternative option has been identified at the present time and so the scheme in its present form has been removed in business planning. Abortive costs of £458k will be written back to revenue following closure of the scheme.

3.2 Capital Variations Budget

Variation budgets are set annually and reflect an estimate of the average variation experienced across all capital schemes, and reduce the overall borrowing required to finance our capital programme. There are typically delays in some form across the capital programme due to unforeseen events, but we cannot project this for each individual scheme. We therefore budget centrally for some level of delay. Any known delays are budgeted for and reported at scheme level. If underspends are reported, these are offset with an outturn for the variation budget, leading to a balanced outturn overall up to the point when rephasing exceeds this budget.

3.3 Capital Funding

Original 2025-26 Funding Allocation as per Business Plan £000	Source of Funding	Budget Carried- forward 2025-26 £000	Budget Revisions 2025-26 £000	Revised Budget for 2025-26 £000	Forecast Spend - Outturn (Jan) £000	Forecast Variance - Outturn (Jan) £000
6,290	Grant Funding	-	442	6,732	6,732	-
3,014	Prudential Borrowing	4	-2,167	851	429	-422
9,304	Total Funding	4	-1,725	7,583	7,086	-422

As with spend above, the write-back of abortive costs will reduce the requirement for prudential borrowing to fund the capital programme.

Additional Disabled Facilities Grant (DFG) has increased the budgeted funding for DFG in 2025-26 by £442k. This money is received into the County Council but made up of individual allocations for each of the District Councils in Cambridgeshire, and the funding will therefore be passed on to them.,

Appendix 4 – Savings Tracker

4.1 Adults, Health and Commissioning Savings Tracker 2025-26 Dec 25

					-28,312	-23,683	4,629	16%		
Directorate	Committee	Type	Business Plan Reference	Title	Planned Savings 2025-26 £000	Forecast Savings £000	Variance from Plan £000	% Variance	RAG	Forecast Commentary
AHC	A&H	2022-23 cfwd	A/R.6.188 (2022-23)	Micro-enterprises Support	-103	-30	73	71%	Amber	The Trusted Provider List of CMEs has been set up and the capacity is in place to access. However further work is required to update systems to allow the Council to operationalise this and start to achieve the saving.
AHC	A&H	2024-25 cfwd	B/R.6.006 (2024-25)	Mental Health supported accommodation	-137	-137	0	0%	Green	
AHC	A&H	2024-25 cfwd	B/R.6.009 (2024-25)	Mental Health residential and community	-317	-317	0	0%	Green	
AHC	A&H	2024-25 cfwd	B/R.6.010 (2024-25)	Block beds void management	-28	-75	-47	-168%	Blue	£23k more than target was delivered in 24/25. The residual amount has been achieved in 25/26.
AHC	A&H	2024-25 cfwd	B/R.6.013 (2024-25)	Prevent, reduce and delay needs presenting - reablement	-195	-195	0	0%	Green	Saving will be delivered to target
AHC	A&H	2024-25 cfwd	B/R.6.015 (2024-25)	Prevention Agenda - Digital Innovation	-300	0	300	100%	Black	Current progress on the digital innovation savings strategy suggests that the saving linked to this project will be delayed and will under-deliver in 25-26. Work is ongoing to understand the size of the savings opportunity and some mitigation in year may be possible with new digital approaches introduced in Q3. This will be reflected in the forecast as it is identified.
AHC	A&H	2024-25 cfwd	B/R.6.018 (2024-25)	Learning Disability Respite Utilisation	-21	-21	0	0%	Green	On track as respite bookings are scheduled months in advance. On-going monitoring will be in place
AHC	A&H	2024-25 cfwd	B/R.6.020 (2024-25)	Learning Disability Cambridgeshire Outreach	-187	0	187	100%	Black	Solution being implemented but due to revised timescales and the need to recruit, savings anticipated in year will not be achieved.
AHC	A&H	2024-25 cfwd	B/R.6.021 (2024-25)	Learning Disability Enablement	-391	0	391	100%	Black	Pilot unsuccessful due to resourcing issues. Decision required on alternative mitigations.

Directorate	Committee	Type	Business Plan Reference	Title	Planned Savings 2025-26 £000	Forecast Savings £000	Variance from Plan £000	% Variance	RAG	Forecast Commentary
AHC	A&H	2024-25 cfwd	B/R.6.024 (2024-25)	Prevention Agenda - All Age Locality Strategy	-177	-177	0	0%	Green	Agreed approach following recommendations from consultancy report. Implementation starting late but likely to deliver full savings in year.
AHC	A&H	2024-25 cfwd	B/R.6.025 (2024-25)	Mental Health Recommissioning Supported Accommodation	-75	-75	0	0%	Green	Saving was meant to be delivered through closure of Garden Walk, but proved to be undeliverable due to alternative placement moves being more costly. Mitigations have been achieved through alternative savings.
AHC	A&H	2024-25 cfwd	B/R.6.027/28/29 (2024-25)	Review discharge pathways - Pathway 3, Reduce bed based care	-1,200	-679	521	43%	Red	Partial delivery through Pathway 1/Reablement increased capacity. Further options for delivering the saving are being explored with partners.
AHC	A&H	2024-25 cfwd	B/R.6.030/31/32 (2024-25)	Review in house services - Cost avoidance / efficiencies and new opportunities	-1,000	0	1,000	100%	Black	Non delivery of saving in year mitigated by additional grant funding for care pressures. Mitigations being explored but likely to deliver in 26/27 as business cases being developed
AHC	A&H	2024-25 cfwd	B/R.6.037 (2024-25)	Day Opportunities	-183	0	183	100%	Black	Review is being undertaken during 25/26 and an independent co-production partner commissioned to agree direction of travel and next steps. Current performance to be reviewed to understand if a level of savings have been achieved.
AHC	A&H	2022-23 cfwd and 2024-25 cfwd	A/R.7.113 (2022-23) B/R.7.005a (2024-25)	Learning Disability Partnership Pooled Budget - cost share	-2,594	-680	1,914	74%	Red	Pooled budget ended 31st March 2025 and has not delivered the anticipated savings for the Council. Mitigation plans are in place, focusing on work with the ICB regarding joint funded packages, it is anticipated this will start to mitigate against this saving. Work continues to identify further savings and manage future demand and work is taking place with the ICB regarding joint funded cases.
AHC	A&H	2025-26 saving	B/R.7.002	Expansion of Direct Payments	-60	0	60	100%	Black	Alternative proposals to improve direct payment delivery are being explored through a new team level KPI for increasing DP uptake.
AHC	A&H	2025-26 saving	B/R.7.003	Decommissioning of block contracts for car rounds providing homecare	-100	-100	0	0%	Green	Complete
AHC	A&H	2025-26 saving	B/R.7.006	Mental Health supported accommodation	-267	-267	0	0%	Green	

Directorate	Committee	Type	Business Plan Reference	Title	Planned Savings 2025-26 £000	Forecast Savings £000	Variance from Plan £000	% Variance	RAG	Forecast Commentary
AHC	A&H	2025-26 saving	B/R.7.009	Mental Health residential and community	-357	-446	-89	-25%	Blue	Priority being given to mitigating previous years savings. Further updates will be provided as we begin to track actuals
AHC	A&H	2025-26 saving	B/R.7.013	Prevent, reduce and delay needs presenting - reablement	-465	-465	0	0%	Green	Saving will be delivered to target
AHC	A&H	2025-26 saving	B/R.7.016	Learning Disability Low Cost placement review	-130	-75	55	42%	Amber	Mitigation from other workstreams
AHC	A&H	2025-26 saving	B/R.7.018	Learning Disability Respite Utilisation	-95	-105	-10	-11%	Blue	On track as respite bookings are scheduled months in advance. On-going monitoring will be in place
AHC	A&H	2025-26 saving	B/R.7.038	Savings from ending of Learning Disability pooled budget arrangements	-2,387	-320	2,067	87%	Red	Pooled budget ended 31st March 2025 and has not delivered the anticipated savings for the Council. Mitigation plans are in place, focusing on reviewing different areas of service spend. To date, these efforts have delivered £1.42 million in savings. However, new in-year demand is continuing, and activity is now returning to previous levels, adding further strain to the budget and offsetting some of the savings made. The savings achieved so far have therefore offset the increased demand pressures and not reduced the overall overspend. Work continues to identify further savings and manage future demand and work is taking place with the ICB regarding joint funded cases.
AHC	A&H	2025-26 saving	B/R.7.039	Enhanced response service	-228	-153	75	33%	Amber	Business case completed, waiting for updated figures. Due to error in redundancy figures given originally, forecasting not to deliver fully.
AHC	A&H	2025-26 saving	B/R.7.040	Social Work apprenticeships	-162	-130	32	20%	Amber	Shortfall in savings due to higher costs to support apprentices and a lower level of vacant Social Worker posts than anticipated to place apprentices into.
AHC	A&H	2025-26 saving	B/R.7.043	Housing Related Support Funding - Travellers Sites	-25	-25	0	0%	Green	Delivered
AHC	A&H	2025-26 saving	B/R.7.044	Extra Care - Additional Hours Budget	-350	-350	0	0%	Green	In year budget to be monitored.

Directorate	Committee	Type	Business Plan Reference	Title	Planned Savings 2025-26 £000	Forecast Savings £000	Variance from Plan £000	% Variance	RAG	Forecast Commentary
AHC	A&H	2025-26 saving	B/R.7.045	Contract Management and Brokerage	-750	-1,719	-969	-129%	Blue	Saving likely to deliver to target - on-going monitoring will be in place.
AHC	A&H	2025-26 saving	B/R.7.046	Directorate Structure Redesign	-500	-500	0	0%	Green	Delivery against vacancy factor in 2025-26.
AHC	A&H	2025-26 saving	B/R.7.052	Double Up Care provision	-500	-200	300	60%	Amber	Early indications from the project are positive with 32% of assessments ending in a reduction of care.
AHC	A&H	2025-26 saving	B/R.7.053	Rebaselining Older People demand	-9,600	-9,600	0	0%	Green	
AHC	A&H	2025-26 saving	B/R.7.054	Rebaselining Autism demand	-491	-491	0	0%	Green	
AHC	A&H	2025-26 saving	B/R.7.055	Housing Related support	-80	-80	0	0%	Green	Delivered
AHC	A&H	2025-26 saving	B/R.7.056	Maximise use of grant funding	-843	-2,768	-1,925	-228%	Blue	Additional grant funding identified to contribute to ASC pressures.
AHC	A&H	2025-26 saving	B/R.7.057	Release social care grant	-633	-633	0	0%	Green	On track
AHC	A&H	2025-26 saving	B/R.7.058	Quality Assurance Forum	-550	-168	382	69%	Red	Tracking of saving is in early stages, forecast continues to be monitored.
AHC	A&H	2025-26 saving	B/R.7.061	Reablement - Physiotherapy Interventions	-355	0	355	100%	Black	Delays in the recruitment process will impact on full delivery of saving in 25/26. Recruitment to one FTE, therapy support interventions have started with 15 people being seen so far, evidence of outcomes starting to be gathered. Advert out for other posts.
AHC	A&H	2025-26 saving	B/R.7.065	Rebaselining ASC inflation opening position for 25-26	-1,600	-1,964	-364	-23%	Blue	
AHC	A&H	2025-26 saving	B/R.7.501	Savings from recommissioning of Public Health contracts	-106	-106	0	0%	Green	On track
AHC	A&H	2025-26 saving	B/R.7.502	Public Health grant uplift applied to Children's obesity prevention work	-200	-200	0	0%	Green	On track. Substitution funding. Work commenced with Children's Centres and Early Years to develop an obesity programme of activities.

Directorate	Committee	Type	Business Plan Reference	Title	Planned Savings 2025-26 £000	Forecast Savings £000	Variance from Plan £000	% Variance	RAG	Forecast Commentary
AHC	A&H	2025-26 saving	B/R.7.503	Local Authority Better Care grant funding for falls prevention	-130	-130	0	0%	Green	On track
AHC	A&H	2025-26 saving	B/R.7.504	Digital NHS health checks	-100	-100	0	0%	Green	On track
AHC	A&H	2025-26 saving	B/R.7.505	Behaviour Change services - place based working	-80	-80	0	0%	Green	On track
AHC	A&H	2025-26 income	B/R.8c.006	Increased income from reducing Financial Assessments backlog	-90	-90	0	0%	Green	Achieved in full.
AHC	A&H	2025-26 income	B/R.8c.007	Increased Health income	-120	0	120	100%	Black	Reviewing outcomes of NHSE determination before level of saving can be confirmed
AHC	A&H	2025-26 income	B/R.8c.008	Fees and charges review	-50	-32	18	36%	Amber	Variance due to fewer full cost clients than expected.
TOTAL					-28,312	-23,683	4,629	16%		

Key to savings tracker:

Total saving	Over £500k	£100-500k	Below £100k
Black	100% non-achieving	100% non-achieving	100% non-achieving
Red	Percentage variance more than 19%	-	-
Amber	Under-achieving by 14% to 19%	Percentage variance more than 19%	Percentage variance more than 19%
Green	Percentage variance less than 14%	Percentage variance less than 19%	Percentage variance less than 19%
Blue	Over-achieving	Over-achieving	Over-achieving

APPENDIX 5 – Technical Note

5.1 The table below outlines the additional Adults, Health and Commissioning grant income, which is not built into base budgets.

Grant	Awarding Body	Amount £'000
Public Health	DHSC	30,424
Local Authority Better Care Grant	Department for Levelling Up, Housing & Communities (DLUHC)	18,716
Market Sustainability and Improvement Fund	DLUHC	10,168
Disabled Facilities Grant (Capital)	DLUHC	6,290
Drug and Alcohol Treatment and Recovery Grant	Office for Health Improvement & Disparities (OHID)	1,612
Local Stop Smoking Services and Support Grant	Office for Health Improvement & Disparities (OHID)	816
Social Care in Prisons Grant	DHSC	296
Individual Placement & Support grant	Office for Health Improvement & Disparities (OHID)	170
Total Non-Baselined Grants 25-26		68,493

5.2 Virements and Budget Reconciliation (Adults, Health and Commissioning)

(Virements between Adults, Health and Commissioning and other service blocks)

	Eff. Period	£'000	Notes
Budget as per Business Plan		238,338	
Centre 33 budget to Children's Education and Families	May	-356	Move of Children's carer's support budget from Adults, Health and Commissioning to Children's, Education and Families
Transfer of Learning Disabilities legal budget to central legal budget	May	-150	Transfer of Learning Disabilities legal budget to central legal budget no pooled budget with Health has ended
Transfer of funding to communications team	June	-215	Transfer of funding to communications team for Adults focussed communication roles
PH grant transfer	June	-238	Transfer PH grant uplift 25/26 released by additional substitutions to corporate code
PH grant transfer	June	137	Move of PH income budget to Children's, Education and Families for carers support
Centralisation of training budgets	Oct	-21	Removal of unused training budgets from AHC services and centralisation of budget with Learning and Development team
Reduction in staff inflation budget	Oct	-9	Redistribution of staffing inflation budget across Directorates to fully fund inflationary uplifts
Transfer of corporate funding	Oct	2,900	Transfer of corporate funding to contribute towards pressure in LD services
Budget 25-26		240,384	

5.3.1 Adults, Health and Commissioning Earmarked Reserve Schedule

Budget Heading	2025-26 Opening Balance £000	Movements in 2025-26 £000	Balance at end January £000	Forecast Balance at end Mar £000	Reserve Description
Strategic Framework Priorities Reserves:					
Other investment reserves	30	0	30	0	In the Business Plan for 2024-25 a one off investment was made into mental health support. This reserve reflects the unspent balance of that investment which will be used in 2025-26.
Corporate risk reserves relating to services in this directorate:					
Adults Risk Reserves	6,281	-1,538	4,743	4,234	Main risk reserve held against the risk of demand for ASC services outstripping budget available. £300k of the reserve is earmarked against the risk of overspend on the Community Equipment budget following the change of provider in year with a forecast drawdown against this of £133k. The Learning Disability element of the reserve has now been used in full in settling the debt position from the LD pool with C&P ICB.
Other Risk Reserves	133	0	133	266	This is a smoothing reserve for the impact of an extra day of care in every leap year which was introduced through the Business Plan for 2024-25.
Ringfenced Reserves:					
PH Grant reserve	3,504	-1,262	2,243	2,032	See further detail below
Earmarked Reserves Relating to AHC	9,948	-2,800	7,149	6,532	

5.3.2 Public Health Grant Earmarked Reserve

Budget Heading	2025-26 Opening Allocation £000	Spend in 2025-26 £000	Balance at end January £000	Forecast Balance at end Mar £000	Reserve Description
<u>Children's Public Health:</u>					
Best Start in Life	18	-12	6	0	Contribution to Best Start in Life programme
Children and Young People's Mental Health	400	-50	350	267	New investment agreed in 2025/26
Period positive schools support	8	0	8	8	New investment agreed in 2025/26
<u>Adult Social Care & Learning Disability:</u>					
Falls Prevention Fund	2	0	2	0	Reserve funding replaced by permanent investment in Falls Prevention work from PH grant uplift
Improving residents' health literacy skills to improve health outcomes	100	-100	0	0	Adult Literacy programme
<u>PHI and Emergency Planning:</u>					
Quality of Life Survey	123	-123	0	0	Annual survey for 3 years to assess long term covid impact – final year
Public Health Emergency Planning	9	0	9	9	Additional funds to respond to Health Protection incidents
<u>Prevention and Health Improvement:</u>					
NHS Health checks Incentive Funding	388	0	388	388	Funding to increase the number of health checks that can be undertaken to catch up with some of the missed checks during the pandemic.

Budget Heading	2025-26 Opening Allocation £000	Movements in 2025-26 £000	Balance at end January £000	Forecast Balance at end Mar £000	Reserve Description
<u>Prevention and Health Improvement cont'd:</u>					
Tier 2 Adult Weight Management Services	45	-45	0	0	
Tier 3 Weight Management Services post covid	357	-357	0	0	To increase capacity of weight management services over 3 years – ends 2025/26
Social Marketing Research and Campaigns	104	-104	0	0	Social marketing research and related campaigns
Support for Primary care prevention	400	-400	0	0	Final spend in 25/26
Children's obesity	339	-40	299	259	Approved by S,R&P Committee in December 23
Care Together	700	0	700	700	New investment agreed in 2025/26
Care Together and Behaviour Change evaluation	80	0	80	40	New investment agreed in 2025/26
<u>Health in All Policies:</u>					
Effects of planning policy on health inequalities	63	-42	21	21	
Training for Health Impact Assessments	26	0	26	26	
<u>Miscellaneous:</u>					
Shared Care record	50	0	50	50	New investment agreed in 2025/26
Public Health Intelligence and Analytics	120	0	120	80	New investment agreed in 2025/26
Uncommitted PH reserves	173	11	184	184	
Year end transfer of underspend to PH reserve	0	0	0	215	Transfer of in year underspend to reserves at year end
TOTAL EARMARKED RESERVES	3,504	-1,262	2,243	2,247	

5.3.3 Adults, Health and Commissioning Capital Reserve Schedule

Budget Heading	2025-26 Opening Balance £000	Movements in 2025-26 £000	Balance at end January £000	Forecast Balance at end Mar £000	Reserve Description
Head of Integration	33	0	33	0	Capital grant funding for AHC IT Systems
TOTAL EARMARKED RESERVES	33	0	33	0	

(+) positive figures represent surplus funds.

(-) negative figures represent deficit funds.