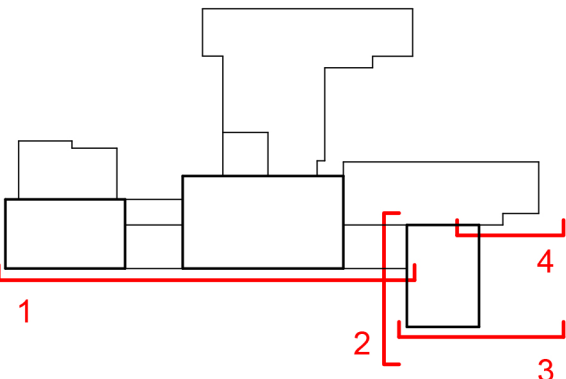


Key Plan

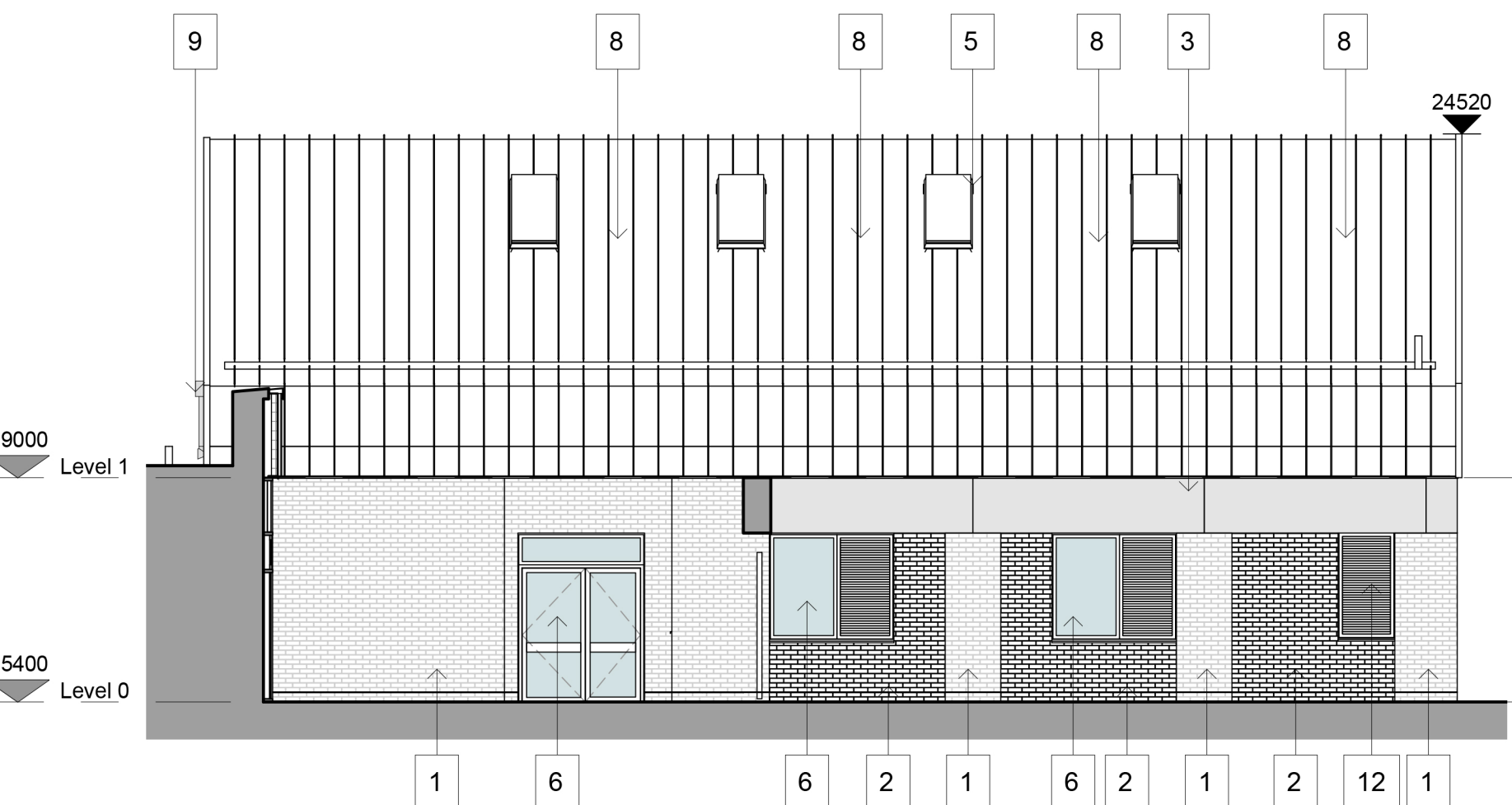


Materials Key

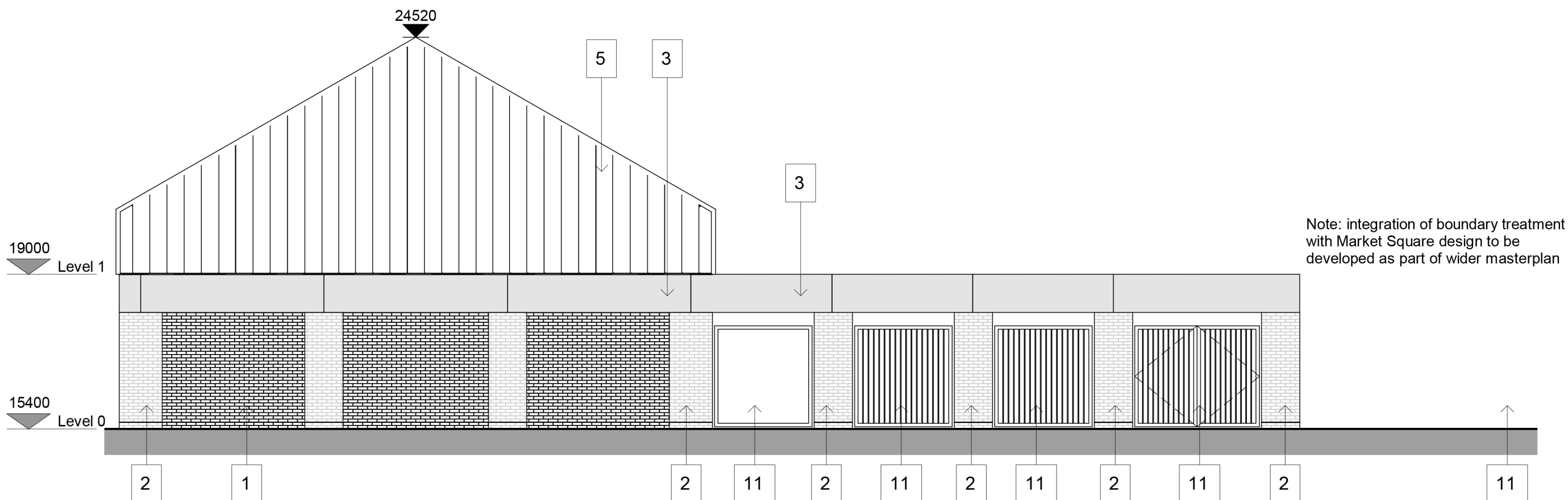
1. Dark brick
2. Light brick
3. Precast concrete / metal panel frieze to match buildings on Market Square
4. Rainscreen cladding panels
5. Standing seam roof / wall cladding
6. Aluminium windows and doors
7. Polyester powder coated aluminium parapet coping
8. Rooflights
9. Polyester powder coated rainwater pipe
10. Rooflights
11. Metal gates and railings
12. Polyester powder coated louvre grille



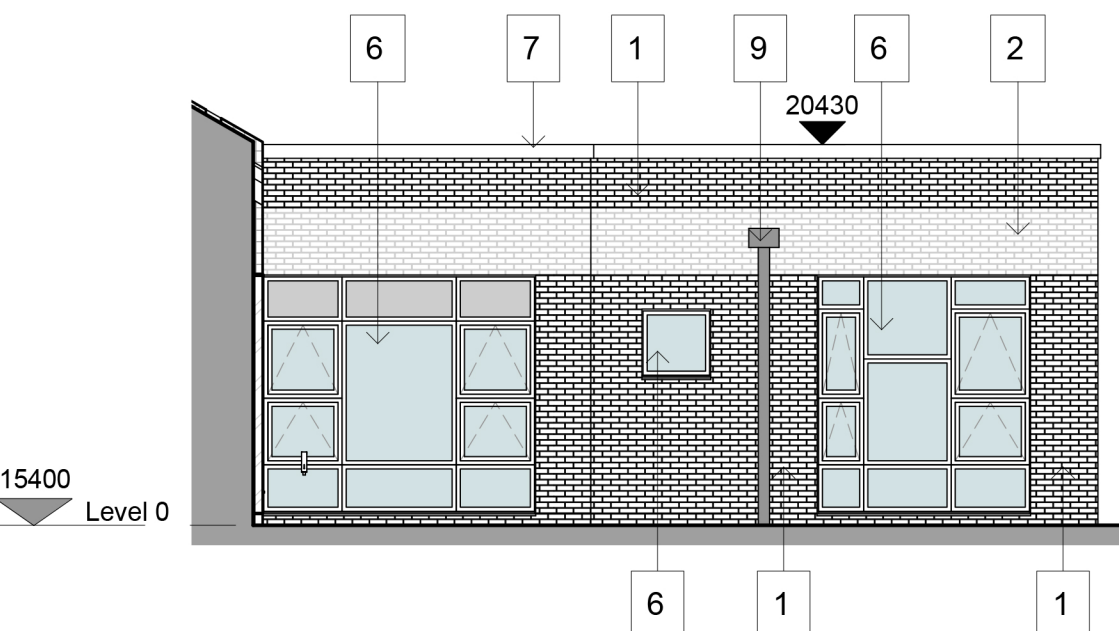
1 South Elevation to Halls and Teaching Wing  
1 : 100



2 West Elevation to Early Years  
1 : 100



3 South Elevation to Early Years  
1 : 100



4 South Elevation to Reception Classroom  
1 : 100

8	20.12.2019	Issue for 2nd Planning Application	MO
7	24.01.2019	Re-issue for Planning	TF
6	19.12.2018	Issue for Planning Application	TF
5	12.12.2018	Updated Planning Drawings	AD
4	05.12.2018	Issued for DW11 minutes	AD
3	20.11.2018	Draft Planning Issue	TF
2	14.11.2018	Draft Planning Issue	TF
1	09.11.2018	Draft Issue for comment	TF
Rev	Date	Description	Drwn

**r h p** partnership architects  
94 Chesterton Road Cambridge CB4 1ER  
T 01223 316309  
www.rhpartnership.co.uk  
cambridge@rhpartnership.co.uk

Project  
Wing Primary School

Drawing  
General Arrangement  
Elevations Sheet 1

Project	originator	vol	level	type	role	number	revision
WING-RHP-PS-ZZ-DR-A-311							8
Scale(s)	RHP Project	First Issued	Drwn	Chkd			
1 : 100@A1	P0608	09-11-2018	TF	KM			

Status	Suitability
Planning	S2