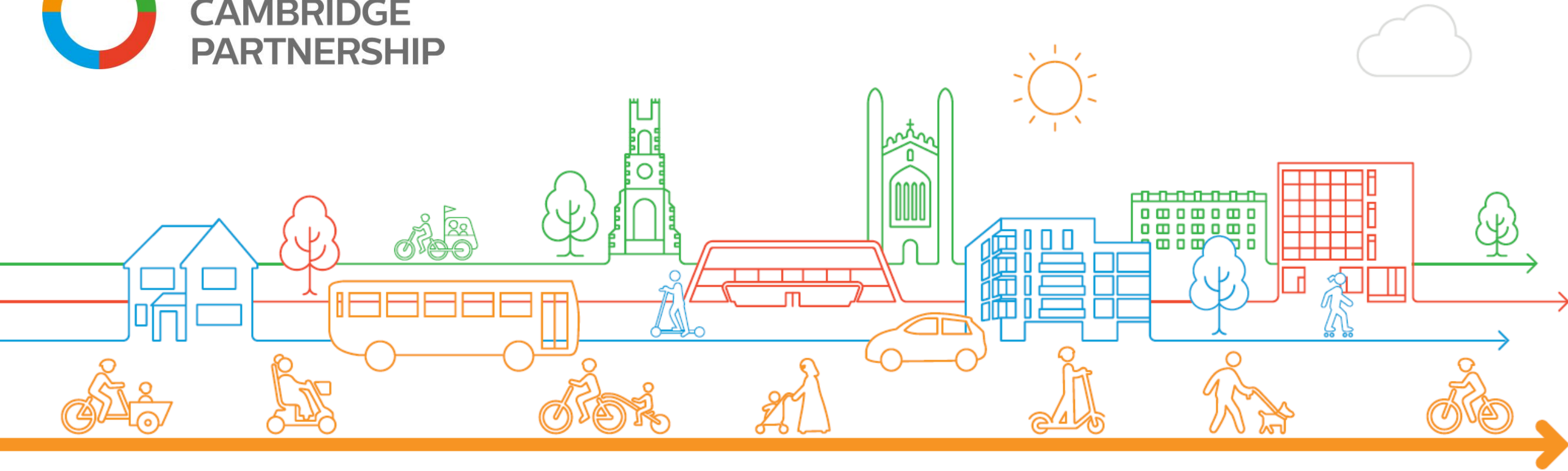




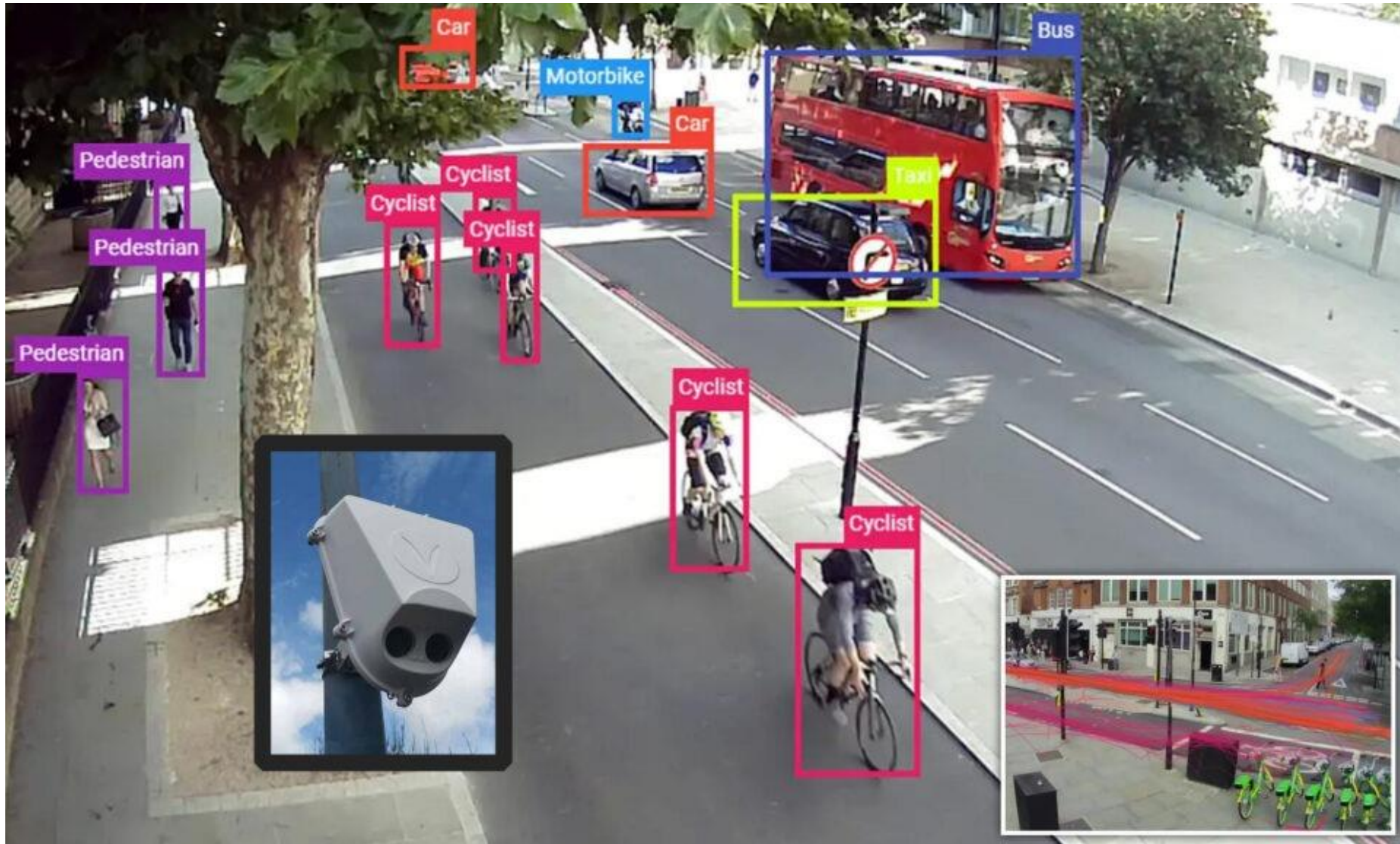
**GREATER
CAMBRIDGE
PARTNERSHIP**



GCP – Smart workstream update

February 2025

Mobility monitoring network



Mobility monitoring network

[← Back to homepage](#)

Travel Observations - VivaCity Sensors (One Site Summary)

[↶ Reset page](#)

Select Day(s) of Week (i)

Monday	Tuesday	Wednesday	Thursday	Friday	Saturday	Sunday
Mon-Fri			Saturday		Sunday	

Select Month (Bespoke)

All

Select Settlement (i)

Cambridge

Select Individual Site

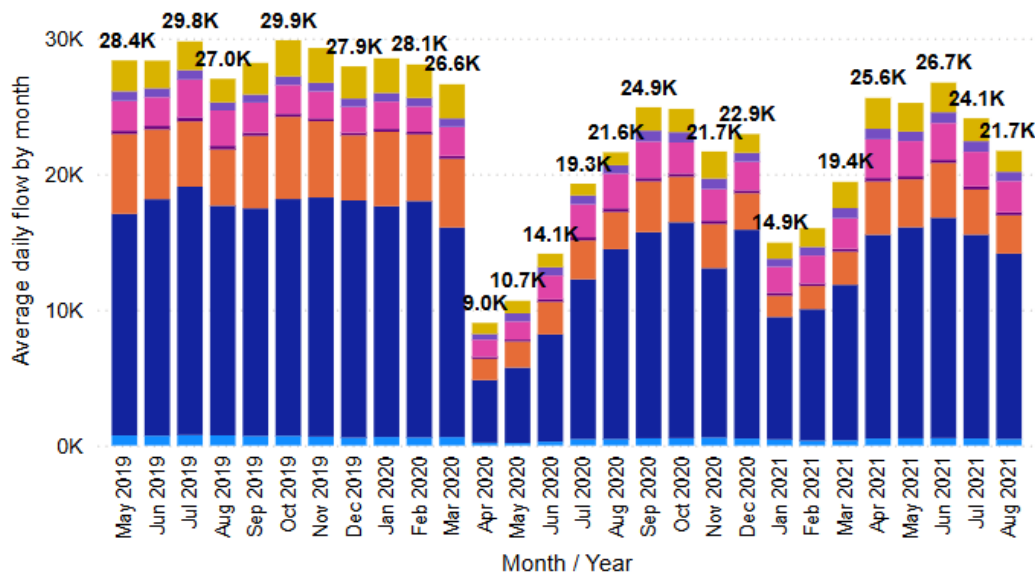
Hills Road Bridge

Site Information:

Sensor upgraded from v1 to v2 in Dec 2024 - resulting in a step change in active travel flows.

Average Flow by Month at Hills Road Bridge, Split by Mode

● Bus ● Car ● Cycle ● HGV ● LGV ● Motorbike ● Pedestrian



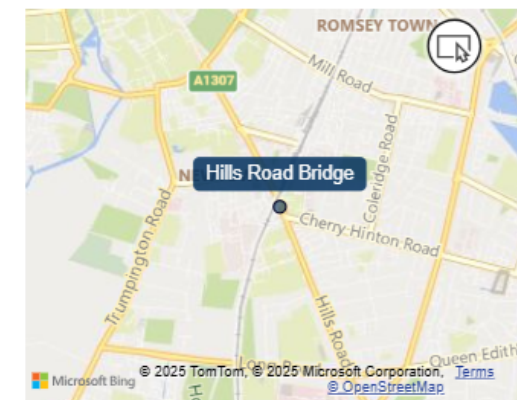
Mass-Select This Month from All Available Years (i)

January	March	May	July	September	November
February	April	June	August	October	December

Summary Split - Active & Motorised

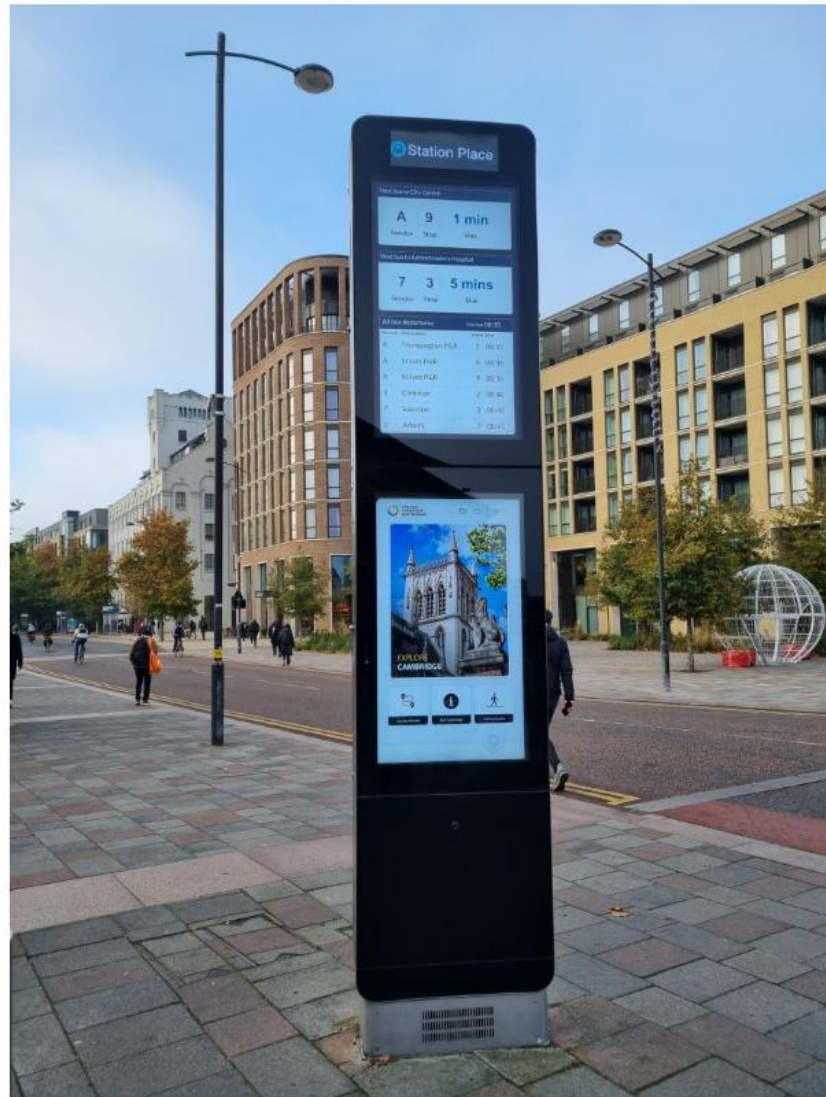
Month / Year	Active	Motorised
May 2019	29%	71%
Jun 2019	25%	75%
Jul 2019	23%	77%
Aug 2019	22%	78%
Sep 2019	27%	73%
Oct 2019	29%	71%
Nov 2019	28%	72%
Dec 2019	26%	74%
Jan 2020	28%	72%
Feb 2020	26%	74%
Mar 2020	20%	79%

Map of Site Selected



All analysis on this page excludes 'non-neutral' days and erroneous data. For definitions of these terms, please consult the homepage.

Better information



09:16:27 smart CAMBRIDGE UNIVERSITY OF CAMBRIDGE GREATER CAMBRIDGE PARTNERSHIP

SmartPanel

This is an early preview of an Adaptive Cities SmartPanel. These screens display real-time travel information in the lobbies of public buildings to inform travel choices. For information about this display and about the SmartPanel initiative please visit www.smartcambridge.org or snap this QR code:

Due	Expected	Destination
09:18	On time	London Liv. St
09:20	On time	London Kings X
09:27	On time	London Kings X
09:28	On time	Cambridge North
09:31	On time	Stansted Airport
09:35	On time	Kings Lynn
09:44	On time	Ipswich
09:50	On time	London Kings X
09:55	On time	Cambridge North
09:56	On time	London Kings X
10:01	On time	Birmingham New St
10:04	On time	London Liv. St

Cambridge

Issued 08:00

Now:
Sunny day
3°C (feels like 0°C)
Wind Fresh (9 mph) NW

10:00:
Sunny day
4°C (feels like 3°C)
Wind Fresh (9 mph) NW

13:00:
Sunny day
9°C (feels like 8°C)
Wind Light (4 mph) NW

William Gates Building

Updated 09:16

To City Centre

Due	Expected Route	Arrives
09:23	On time U	09:34
09:38	U	09:49

To Station

Due	Expected Route	Arrives
09:23	On time U	09:45
09:38	U	10:00

To Hospital

Due	Expected Route	Arrives
09:23	On time U	09:52
09:38	U	10:07

Road Traffic

Live Buses: U and Citi4

Tweets

Conis Travel News @Conis_Travel

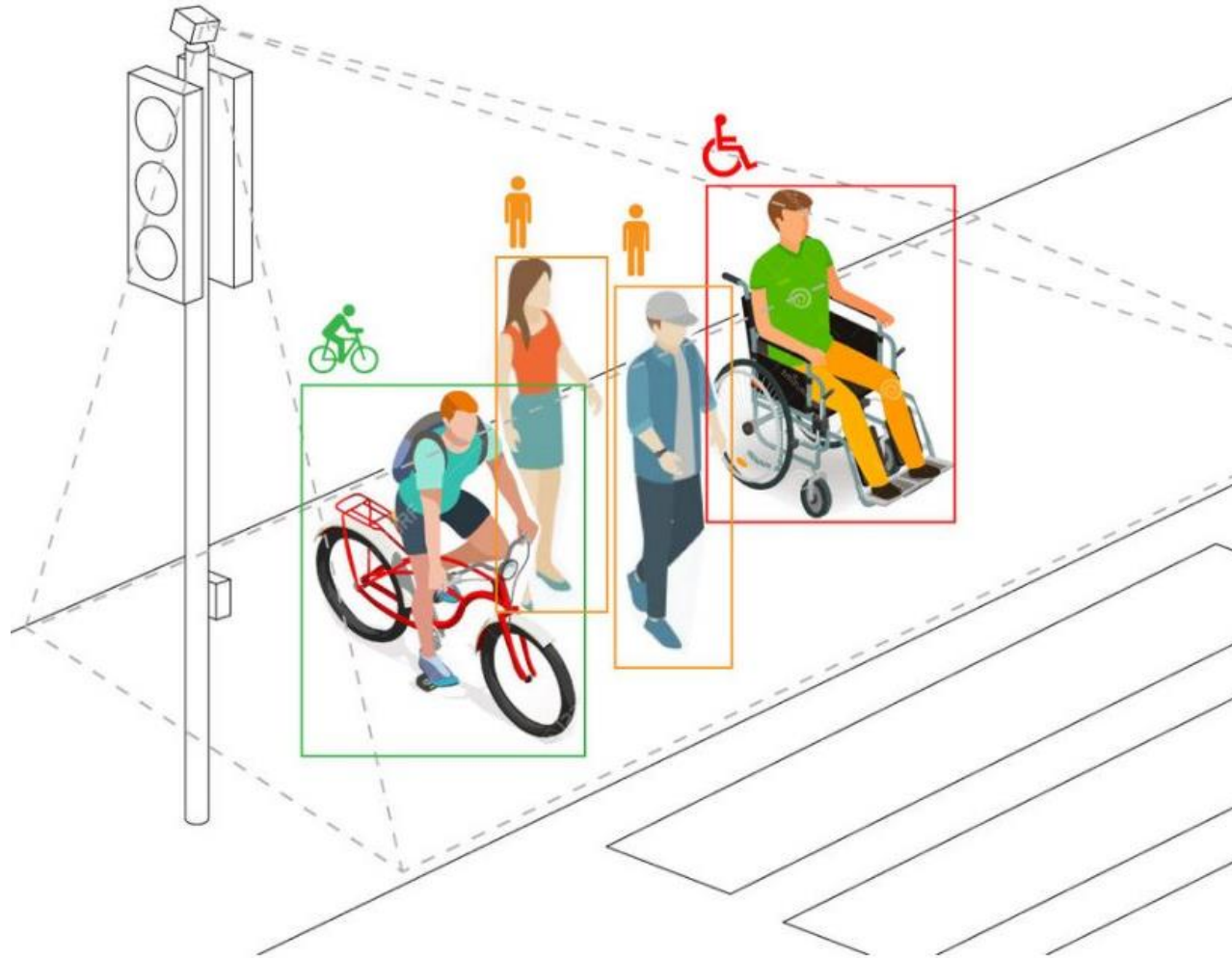
UPDATE: A432 between Histon and Huntingdon is now CLOSED in both directions due to a collision, just south of BEH_jct_080. @Cambridge are on scene roadworks.org? via=twitter

Conis Travel News @Conis_Travel

A432 between Histon and Huntingdon is partly blocked by a collision - repairs are rapidly building up in both directions. @Cambridge are just arriving at the scene.



Smart signals and crossings





Connector

