

Avg. no. of bed-day delays p/month:

2751.6

BCF Target:

#N/A

Variation:

#N/A

RAG Rating:

#N/A

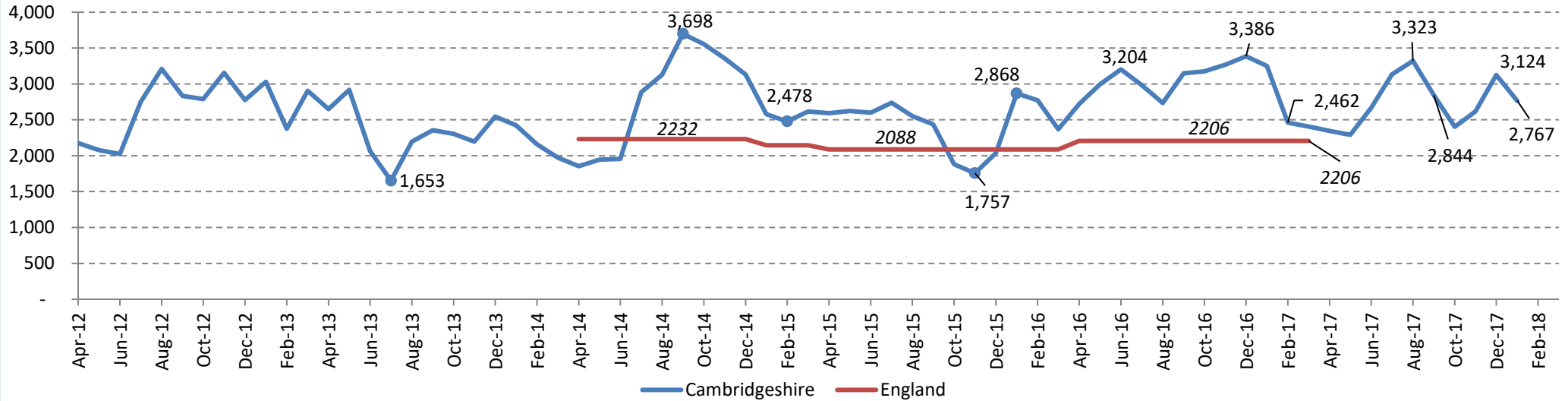
Cambridgeshire - Average monthly bed-day delays per 100,000 (18+ pop.)

531.6

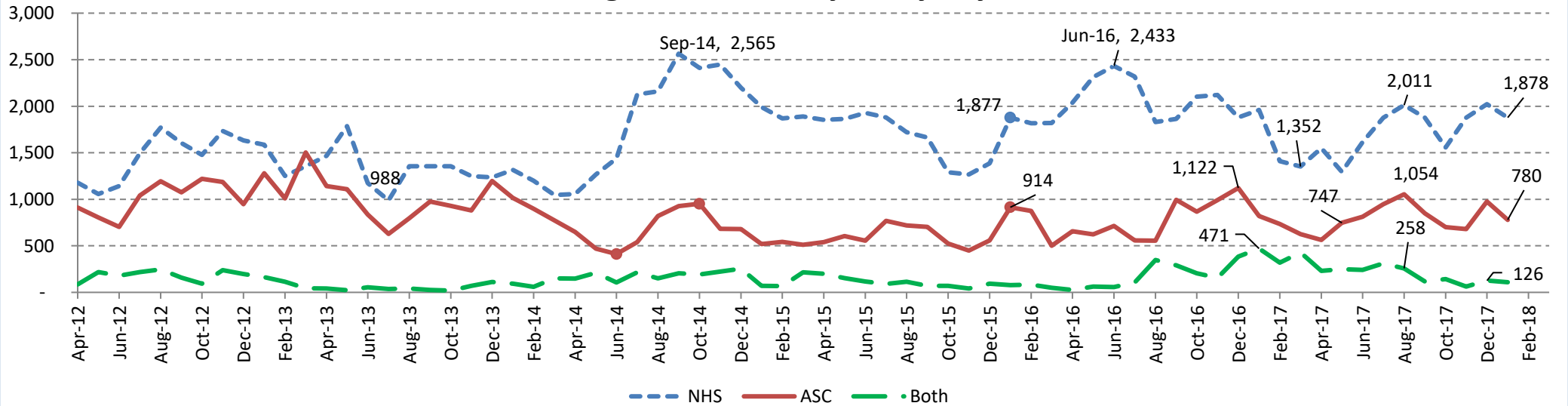
England - Average monthly bed-day delays per 100,000 (18+ pop.)

388.1

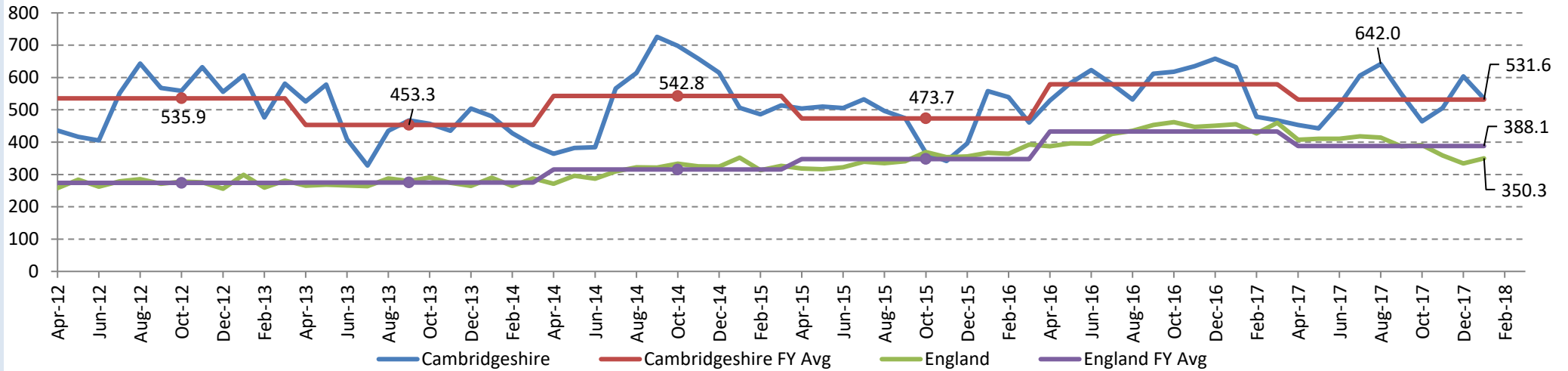
Total Cambridgeshire bed-day delays



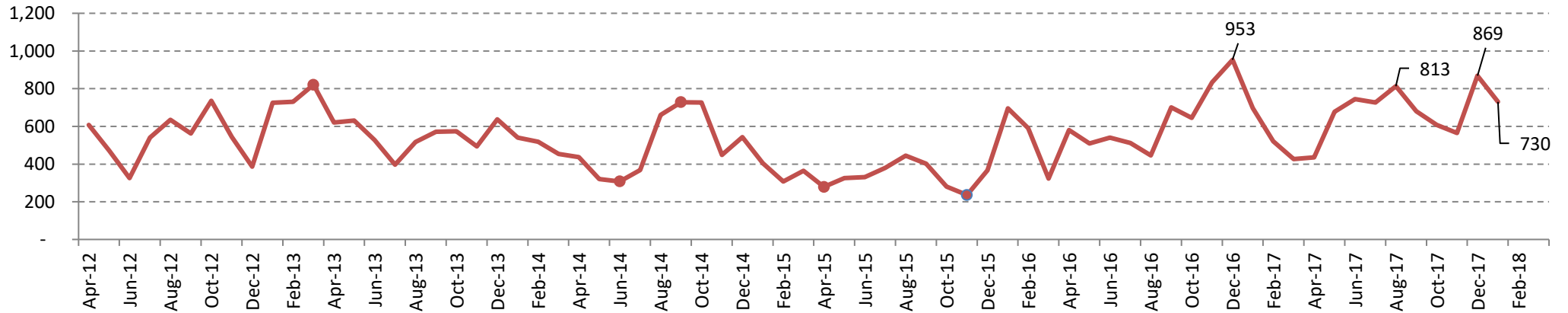
Cambridgeshire bed-day delays by attributor



Total bed-day delays per 100,000 of population



ASC attributable bed-day delays (Acute settings only)



ASCOF 2C: Delayed transfers of care per 100,000 of 18+ population (part 1), and those attributable to adult social care (part 2).

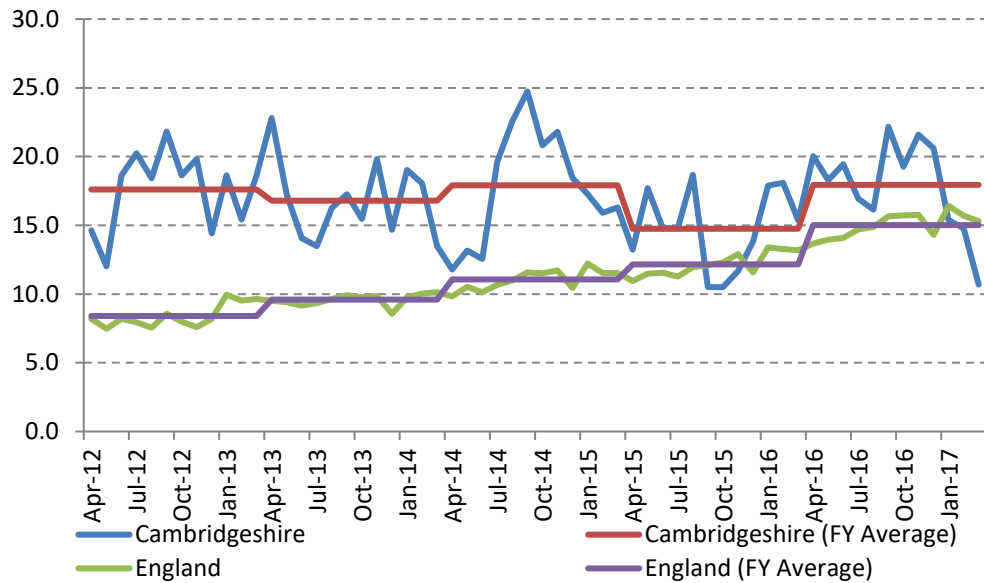
This measure was replaced by the DTOC Beds Measure in April 2017. Information on this new measure will be available here soon.

ASCOF 2C - Part 1 (All delays)		
	Cambridgeshire	England
2015/2016	14.7	12.2
2014/2015	17.9	11.1

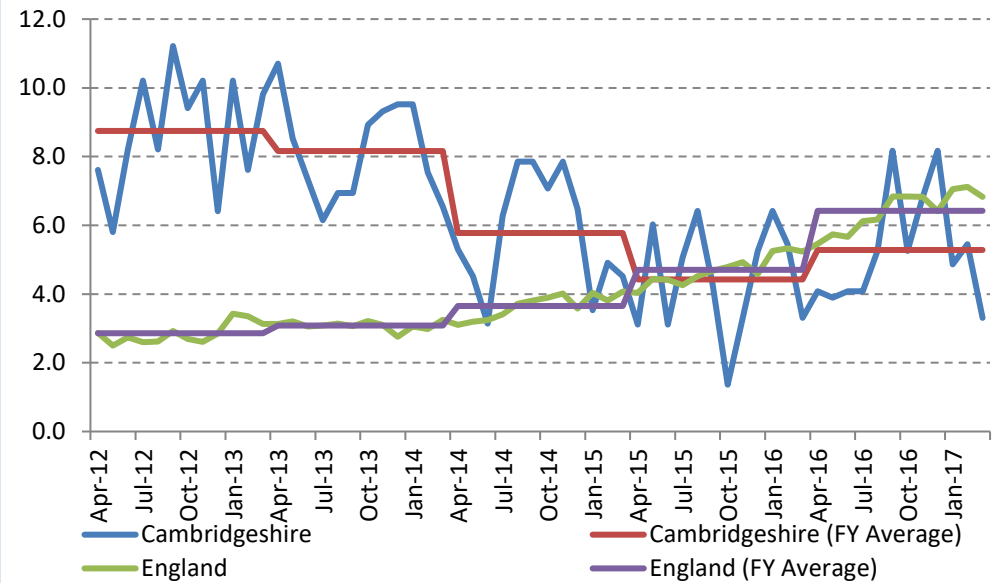
*Cambridgeshire current year target is equal to the previous year's England figure.

ASCOF 2C - Part 2 ("ASC" + "Both" delays)		
	Cambridgeshire	England
2015/2016	4.4	4.7
2014/2015	5.8	3.7

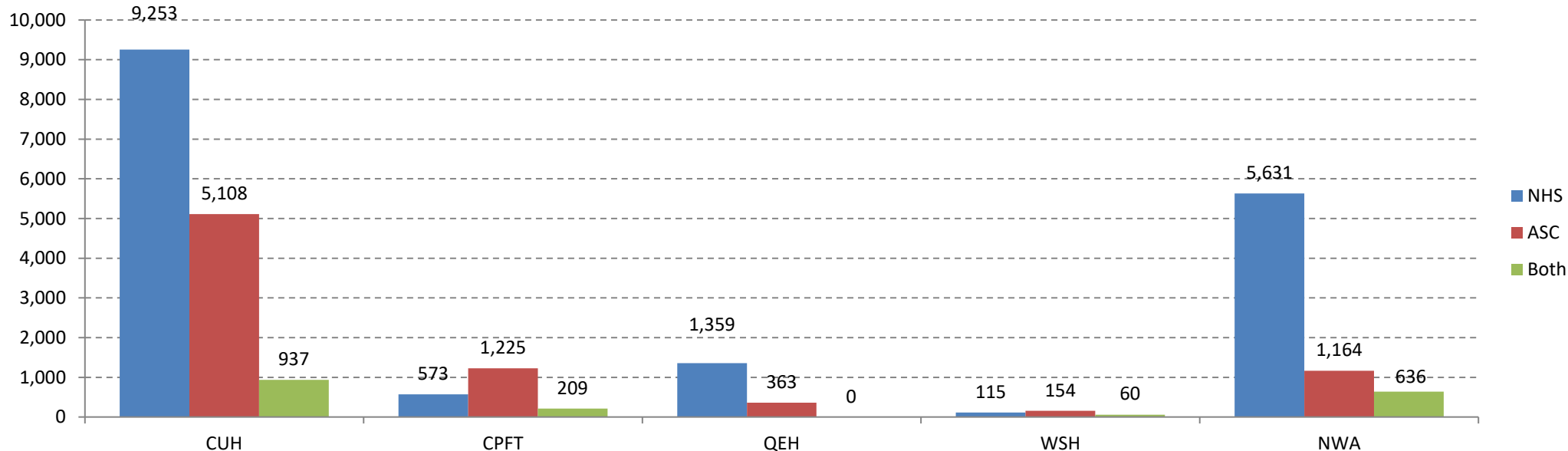
ASCOF 2C - Part 1



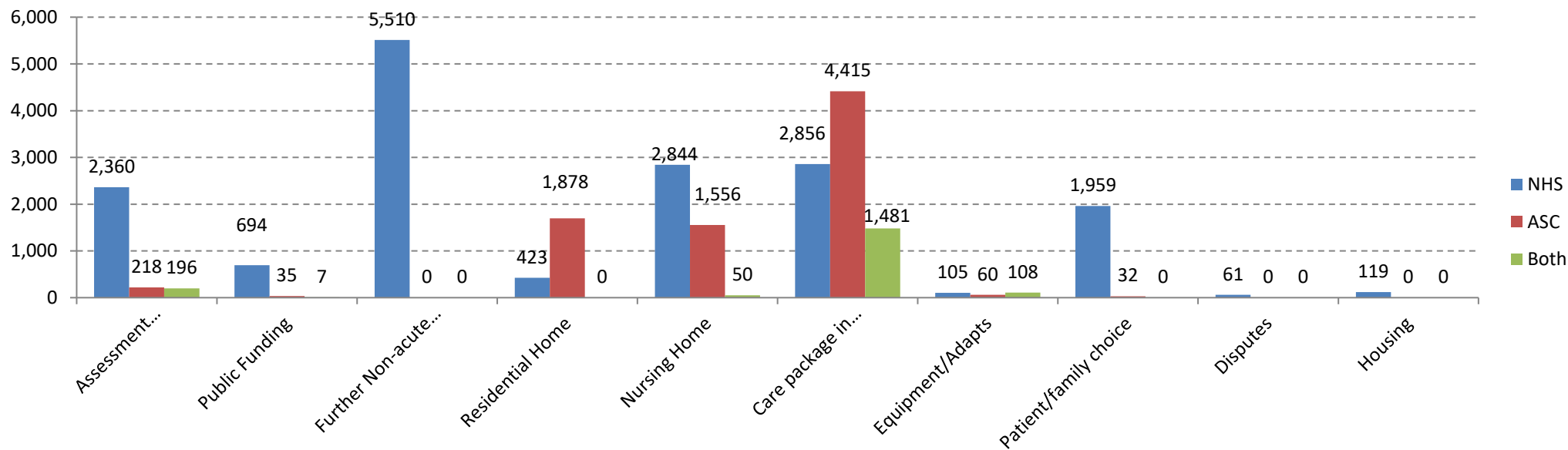
ASCOF 2C - Part 2



Total delays by organisation - FY-to-date



Total bed-day delays by reason



CUH: -3%

CPFT: -33%

QEH: 11%

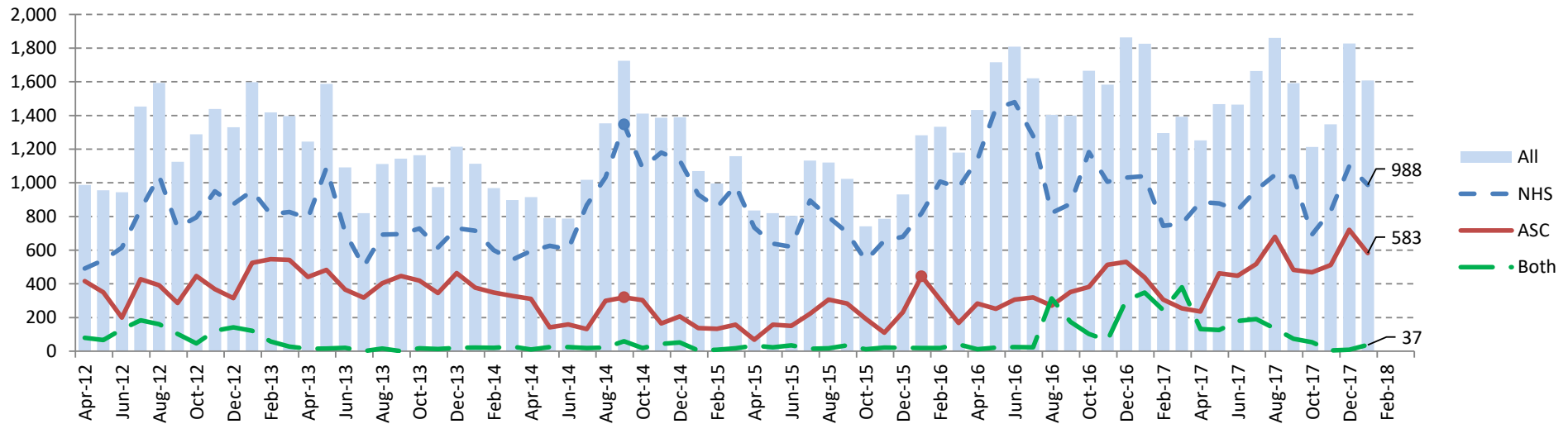
WSH: -44%

NWA

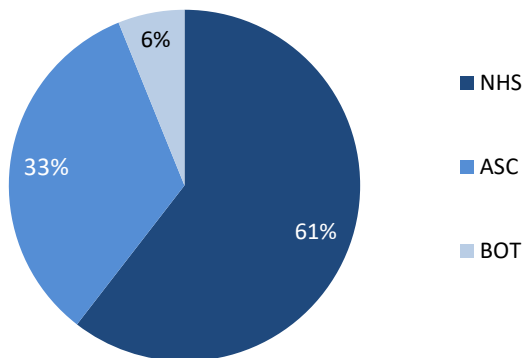
-12%

Cambridge University Hospitals NHS Foundation Trust

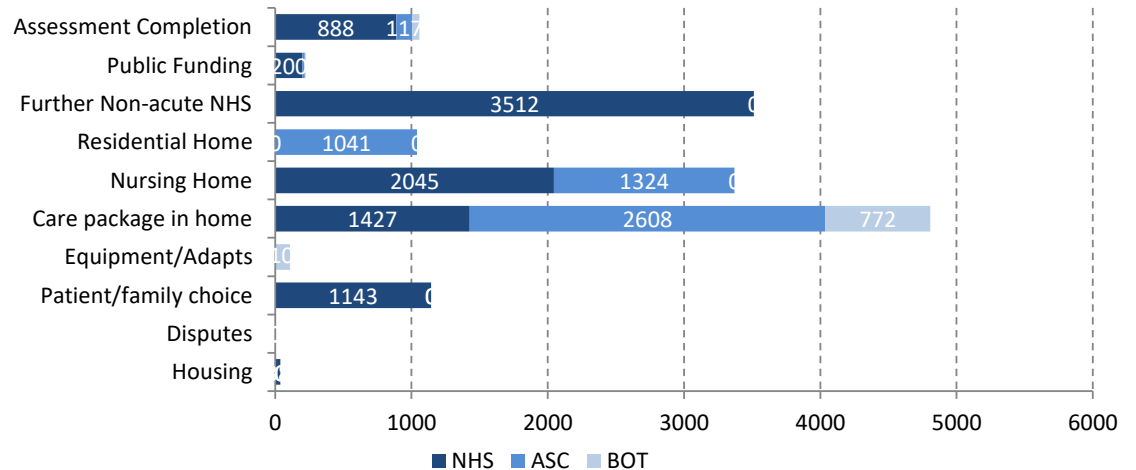
Bed-day delay trend by attributor



Proportion of bed-day delays by attributor (for current year)

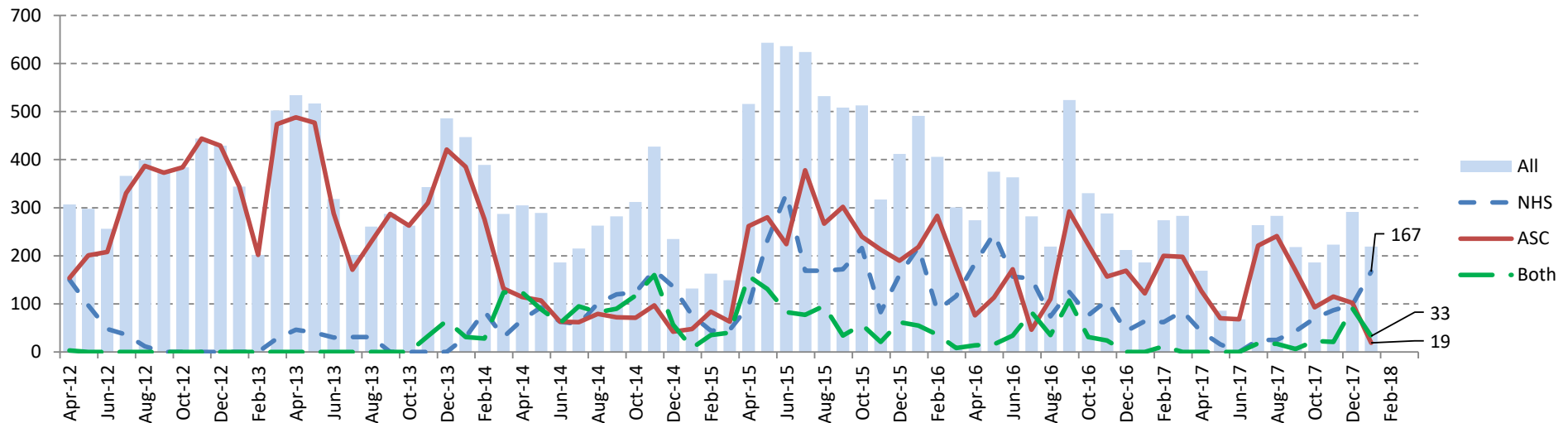


Bed-day delays by attributor and reason (for current year)

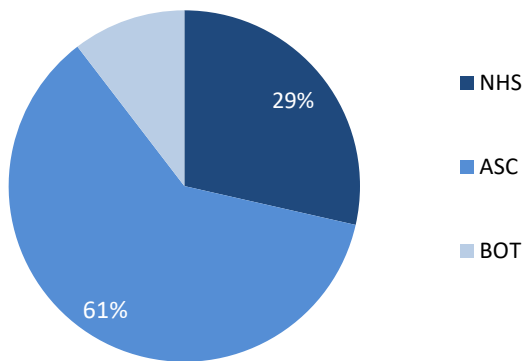


Cambridgeshire & Peterborough *NHS* Foundation Trust

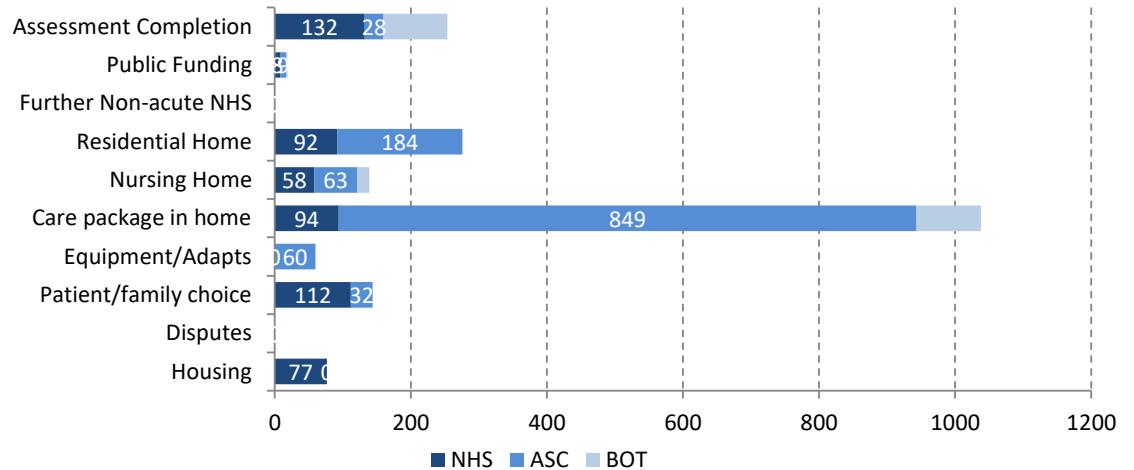
Bed-day delay trend by attributor



Proportion of bed-day delays by attributor (for selected year)



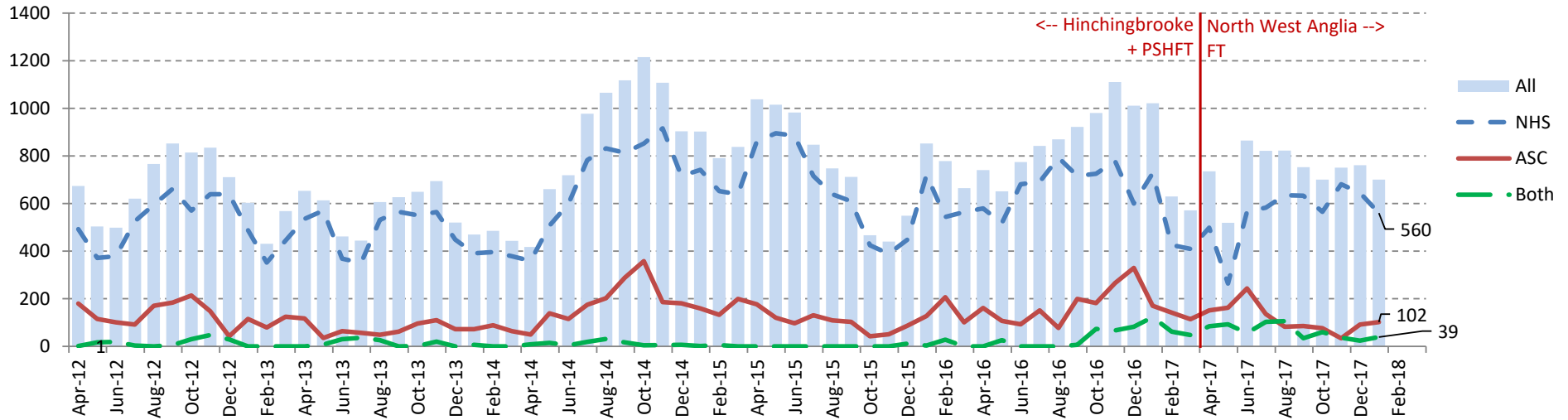
Bed-day delays by attributor and reason (for selected year)



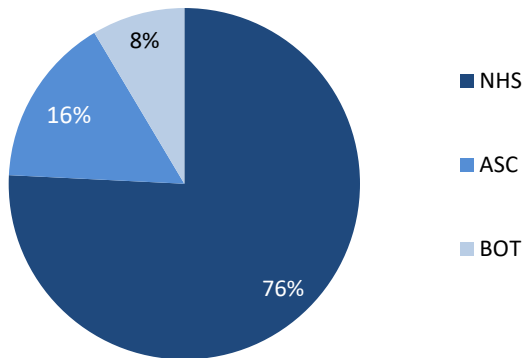
North West Anglia *NHS* Foundation Trust

NWAFT data is reported from 01/04/2017. Data prior to this is the sum of PSHFT and Hinchingbrooke figures.

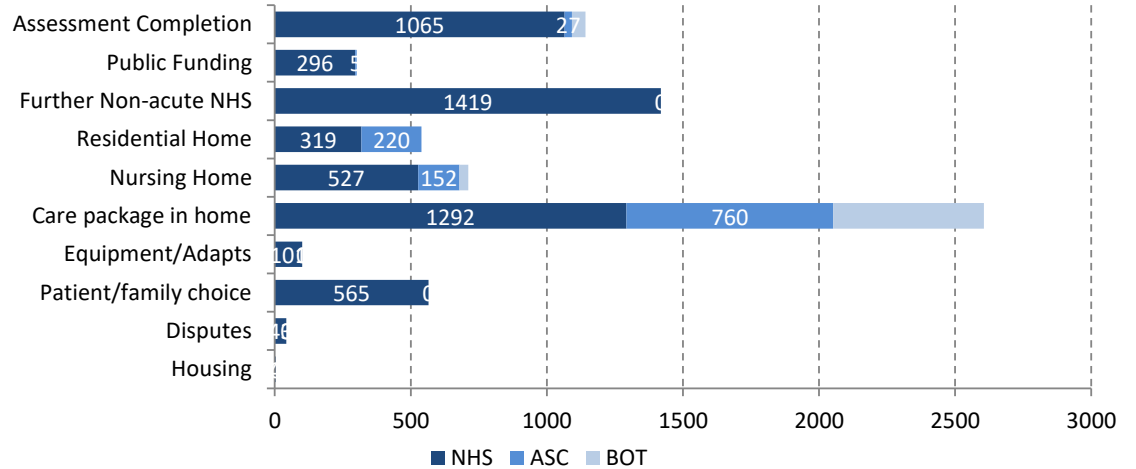
Bed-day delay trend by attributor



Proportion of bed-day delays by attributor (for selected year)

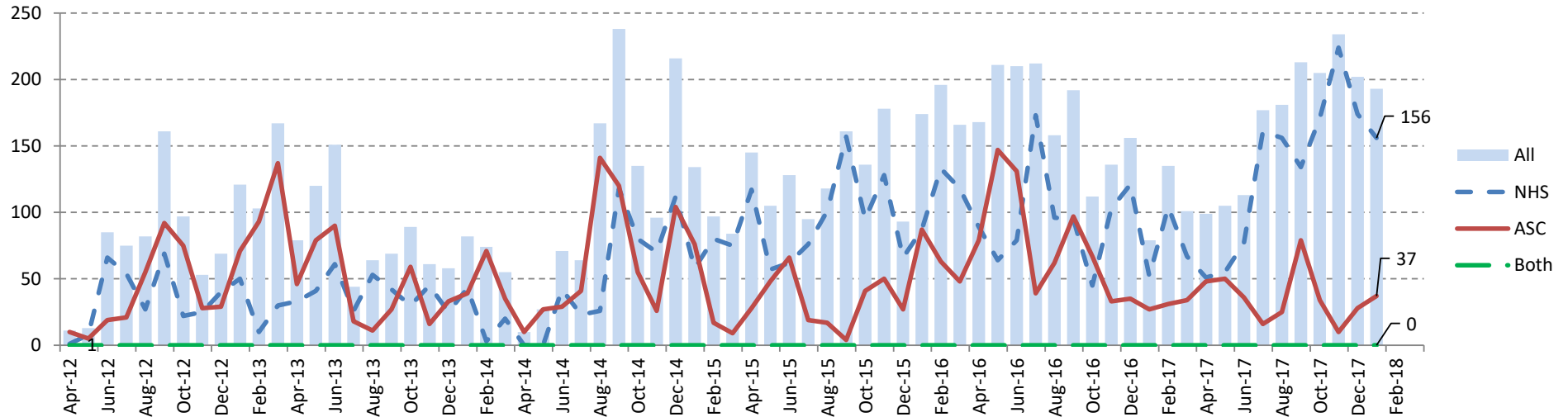


Bed-day delays by attributor and reason (for selected year)

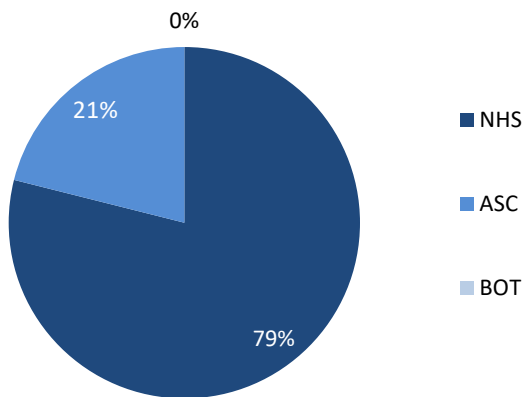


Queen Elizabeth Hospital *NHS* Foundation Trust

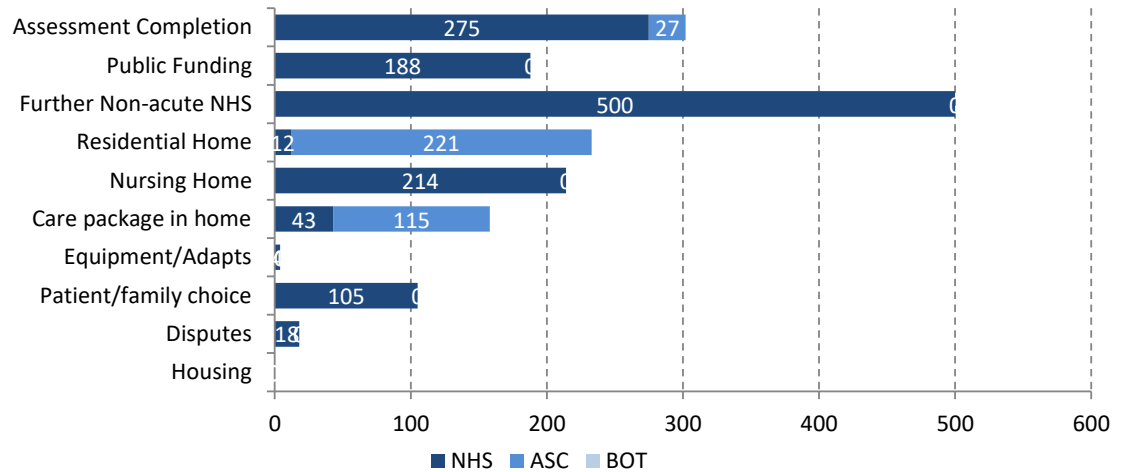
Bed-day delay trend by attributor



Proportion of bed-day delays by attributor (for selected year)

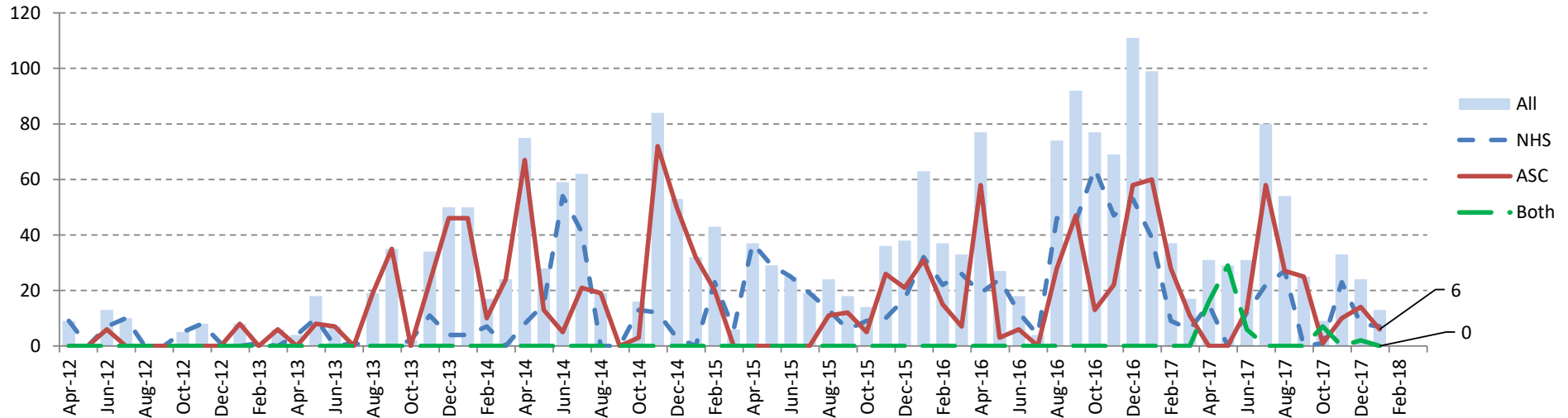


Bed-day delays by attributor and reason (for selected year)

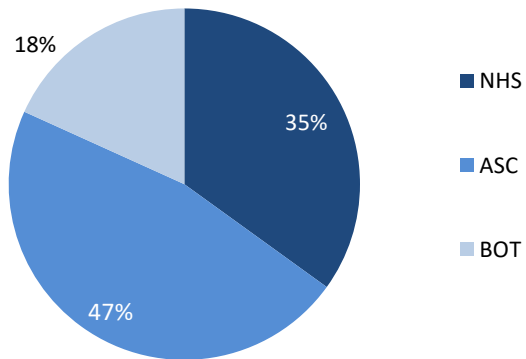


West Suffolk *NHS* Foundation Trust

Bed-day delay trend by attributor



Proportion of bed-day delays by attributor (for selected year)



Bed-day delays by attributor and reason (for selected year)

